

# BYD Han EV/e9 Pure Electric Edition

## Service Lamp Reset

**Function description:** BYD Han EV/e9 pure electric edition service lamp reset

**Supported products:** Launch X-431 new energy comprehensive diagnostic equipment

**Tested model:** BYD Han (2022), VIN: LC0CE6CD6M1\*\*\*\*\* (see the following figure)





## Procedure:

1. On a Launch X-431 new energy diagnostic device, choose [New Energy Diagnose]. (See the following figure.)

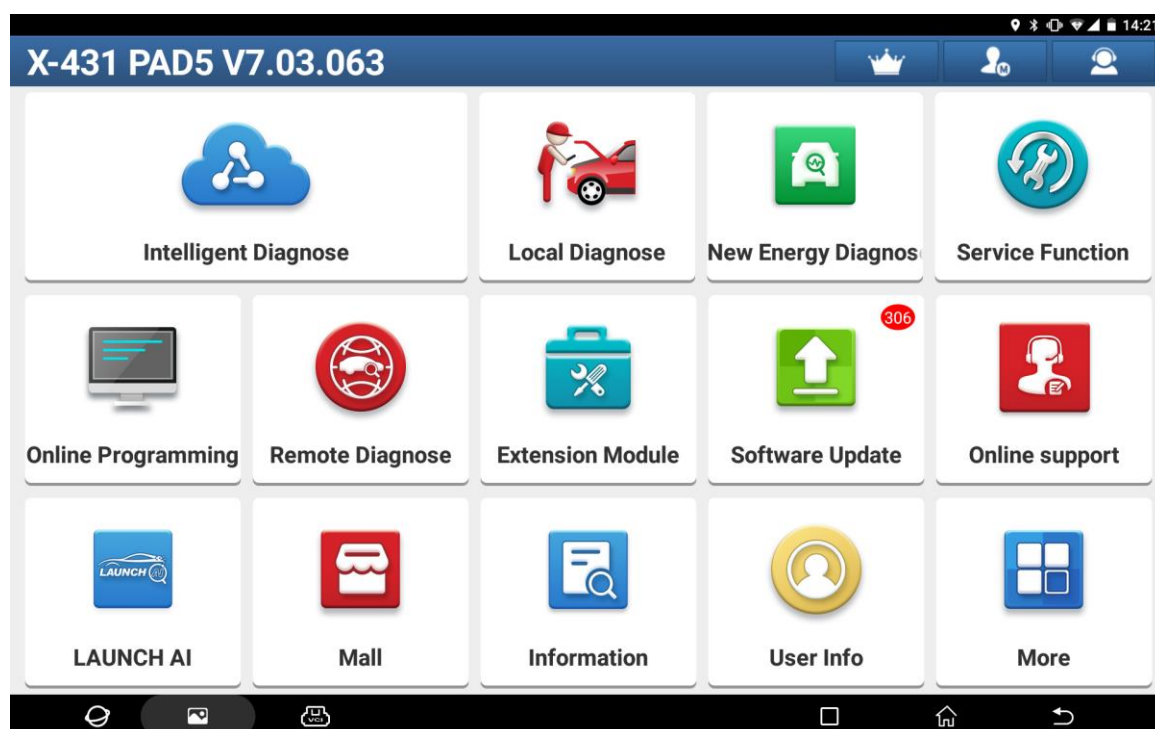


Figure 1

2. Choose [Vehicle Diagnosis]. (See the following figure.)

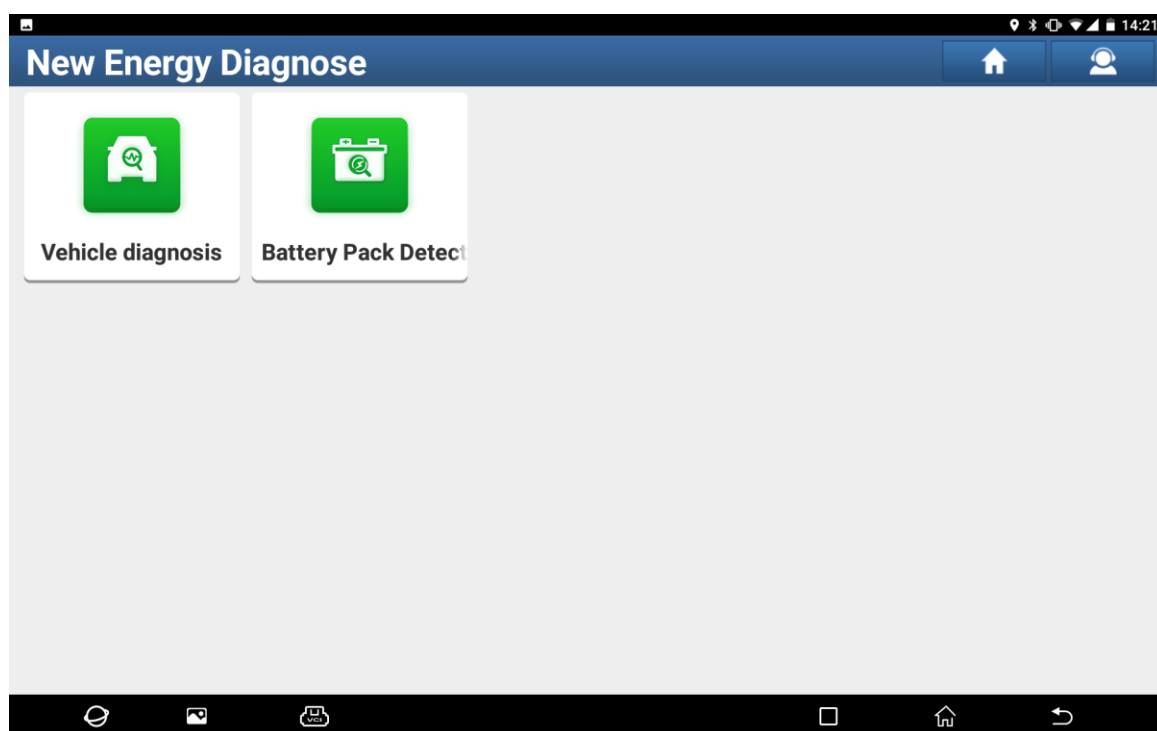


Figure 2

3. Search and choose the new energy vehicle series menu [BYD\_EV]. (See the following figure.)

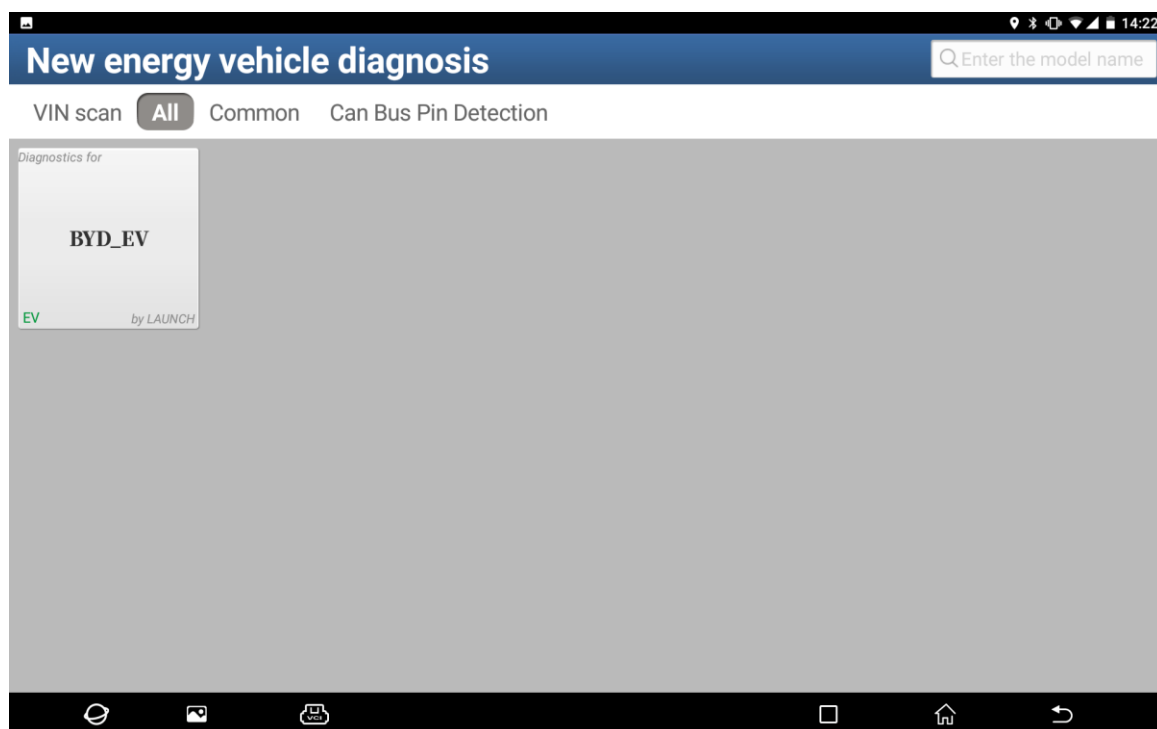


Figure 3

4. Choose [Manually Select Car Model]. (See the following figure.)

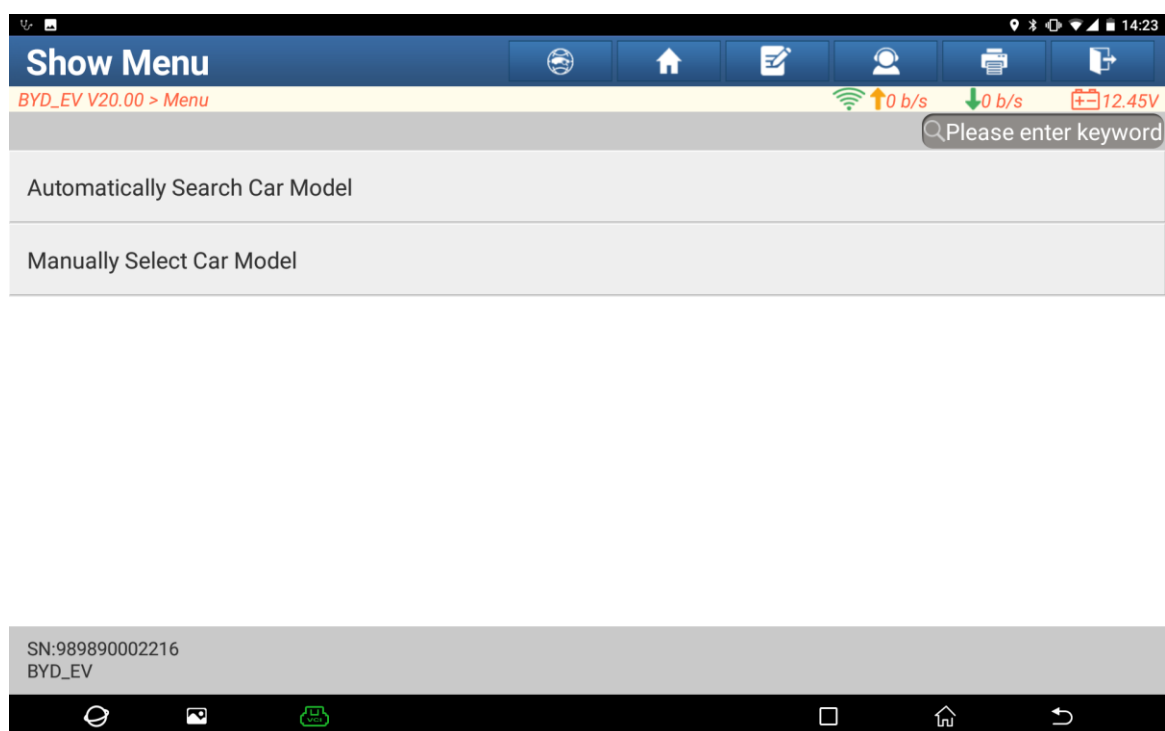


Figure 4

5. Choose [Han]. (See the following figure.)

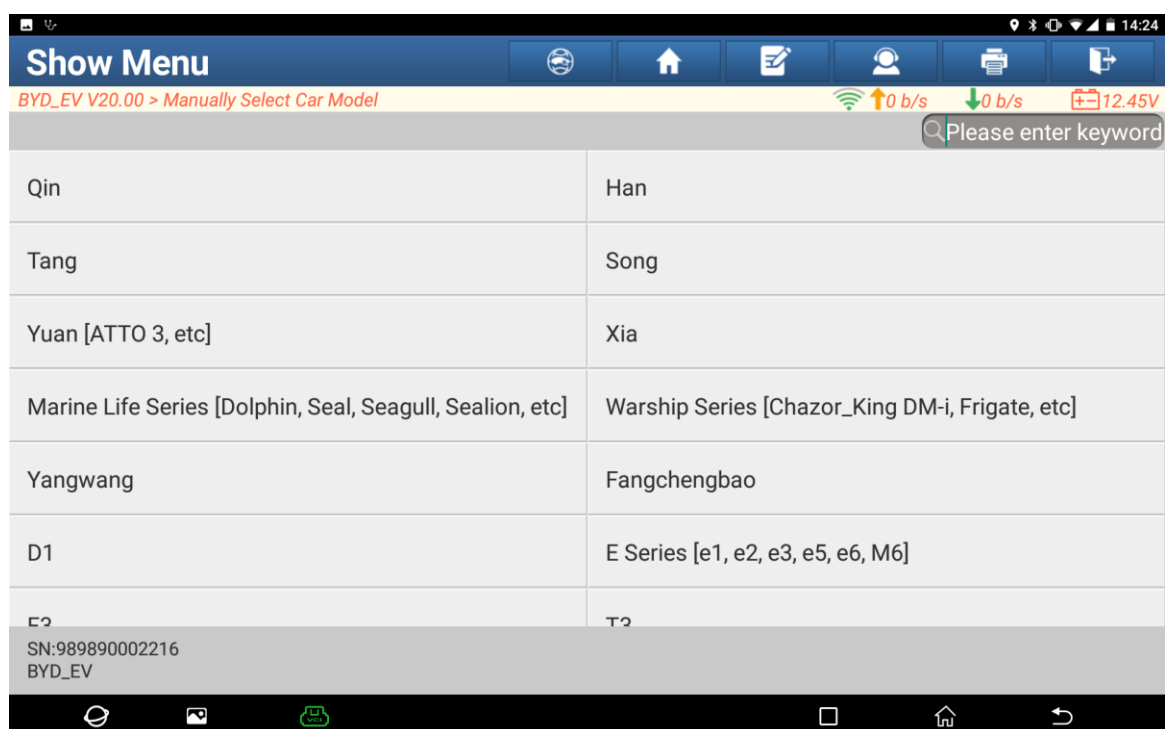


Figure 5

6. Choose [Han EV/e9]. (See the following figure.)



Figure 6

7. Click [High-speed Scan]. (See the following figure.)

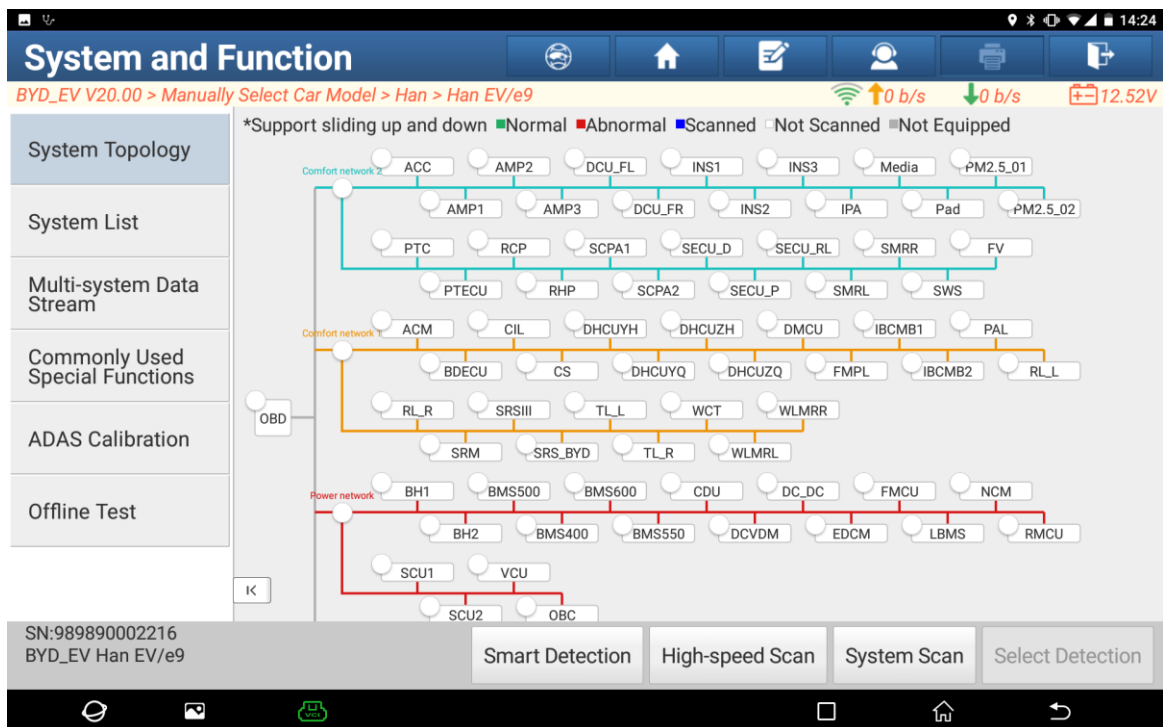


Figure 7

8. Access the instrument cluster system and choose [Special Function]. (See the following figure.)

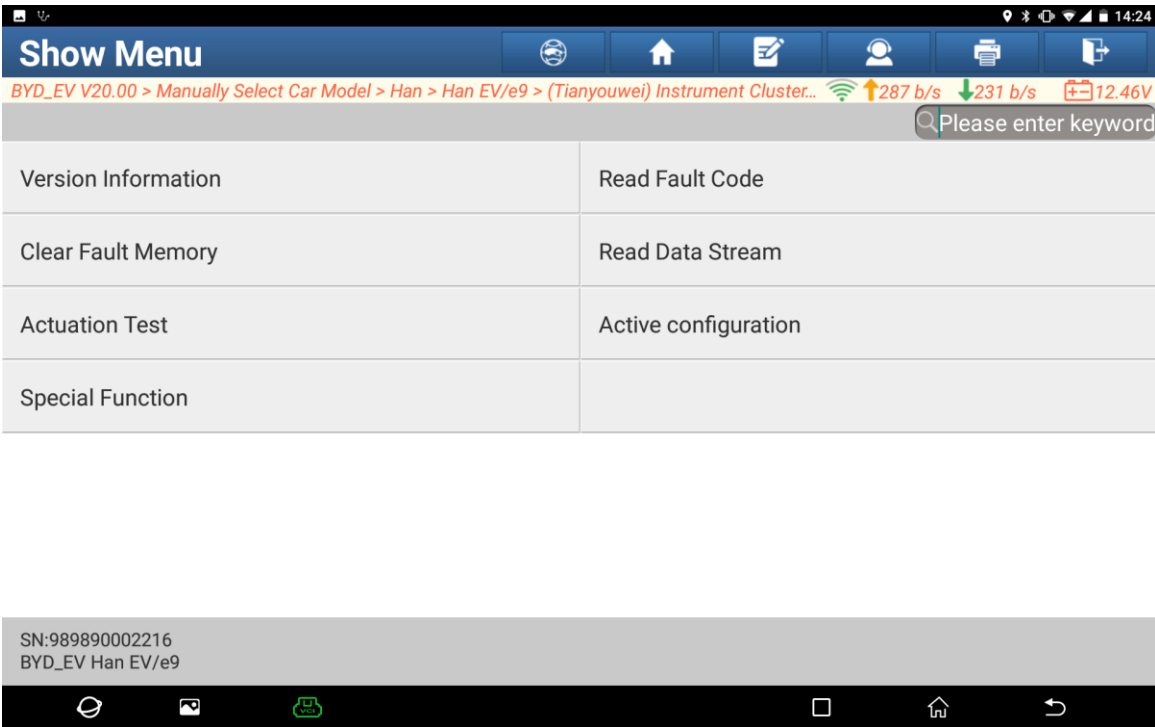


Figure 8

9. Click [Service lamp reset manual operation] and operate as prompted. (See the following figure.)

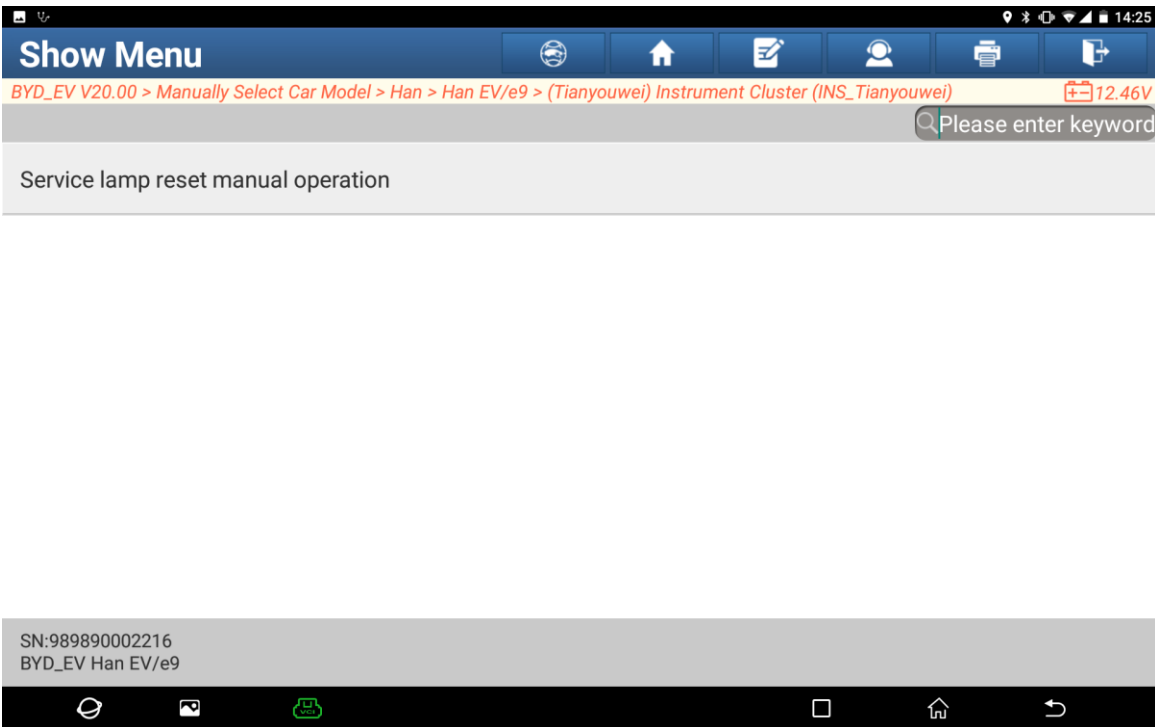


Figure 9

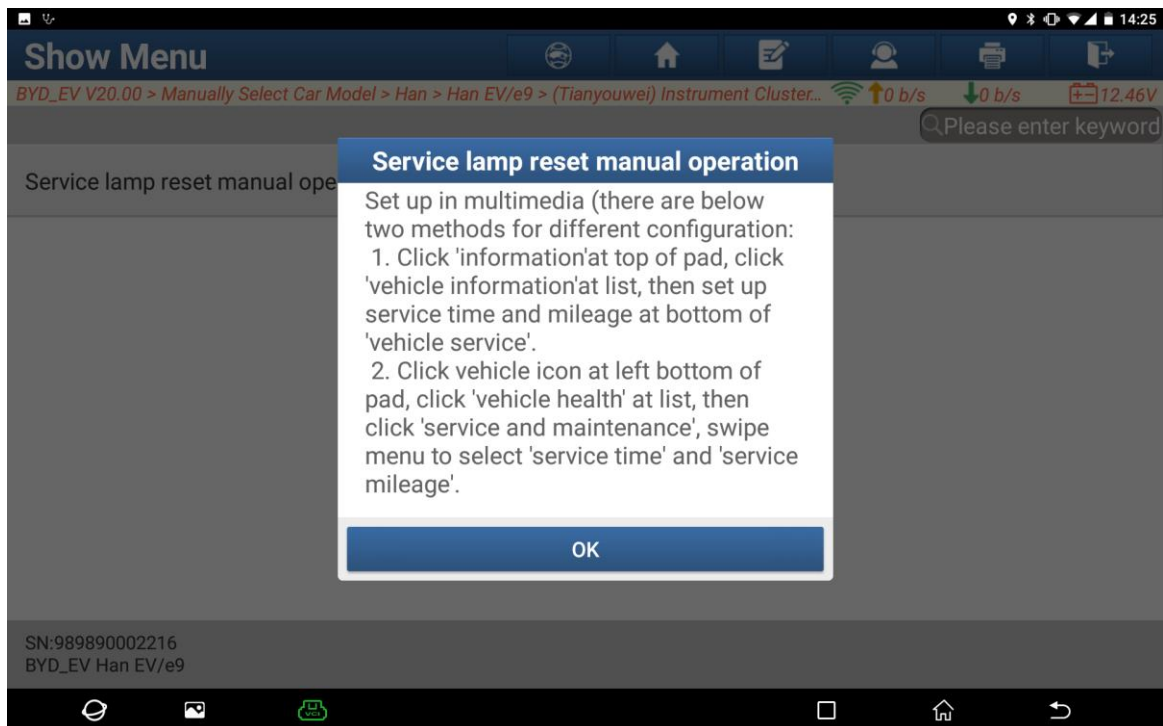


Figure 10

10. In the main interface of the vehicle central control screen, click the vehicle icon in the lower left corner. (See the following figure.)



Figure 11



11. Click [Vehicle Health], where you can set the service mileage and service time. After selecting the mileage and time, click OK to complete the settings.



Figure 12



Figure 13





Figure 14

## Statement:

The content of this document is copyrighted by LAUNCH TECH CO., LTD., and no individual or organization may quote or reprint it without consent.