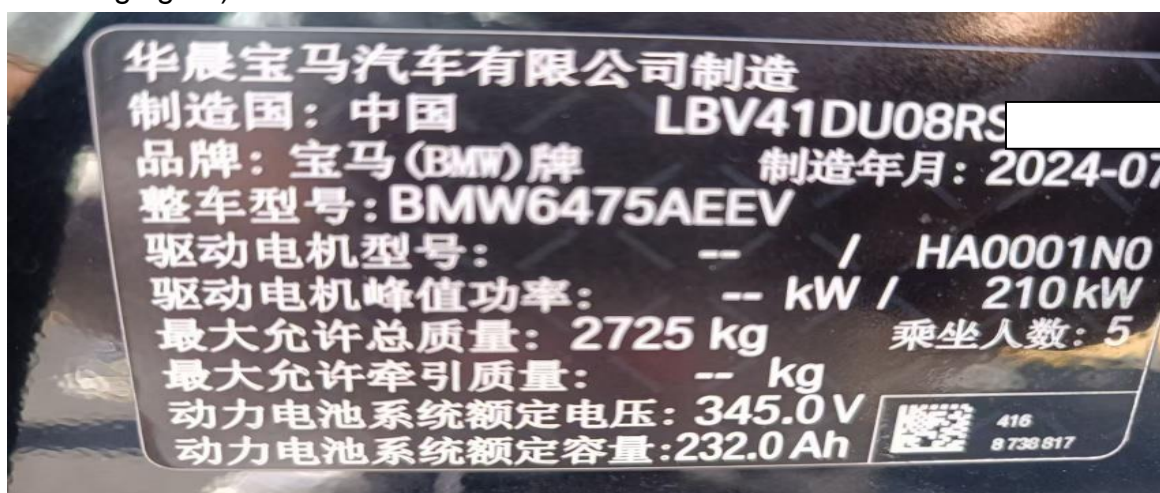


BMW ix3 Short-range Radar Sensor: Reset Correction Angle

Function description: For BMW ix3, there is a DTC 481CFB SRSNVR "Misalignment - Side Radar Sensor Short Range Front Right". The function of "short-range radar sensor: reset correction angle" needs to be performed.

Supported products: Launch PRO or PAD series comprehensive diagnostic equipment

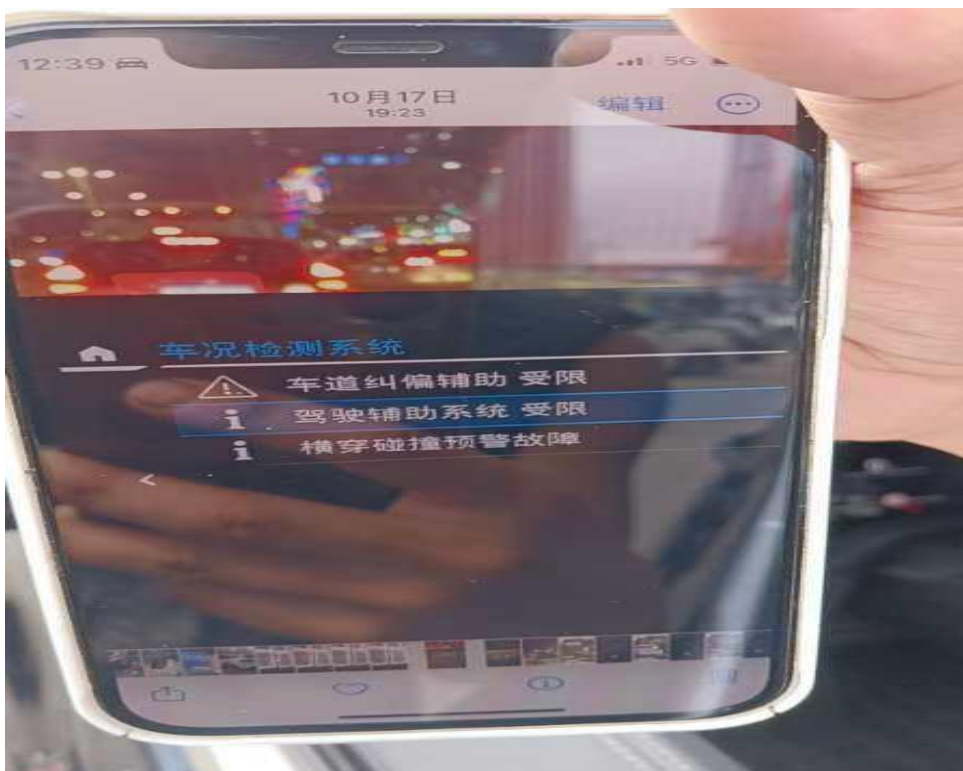
Tested model: 2024 BMW ix3, VIN: LBV41DU08RS***** (see the following figure)



An accident occurs on the right front side of the vehicle.



After the right front side of the vehicle is repaired, the vehicle prompts: Cross-collision warning fault.



Procedure:

1. Save the fault report. There is a DTC 481CFB SRSNVR “Misalignment - Side Radar Sensor Short Range Front Right”. (See the following figure.)

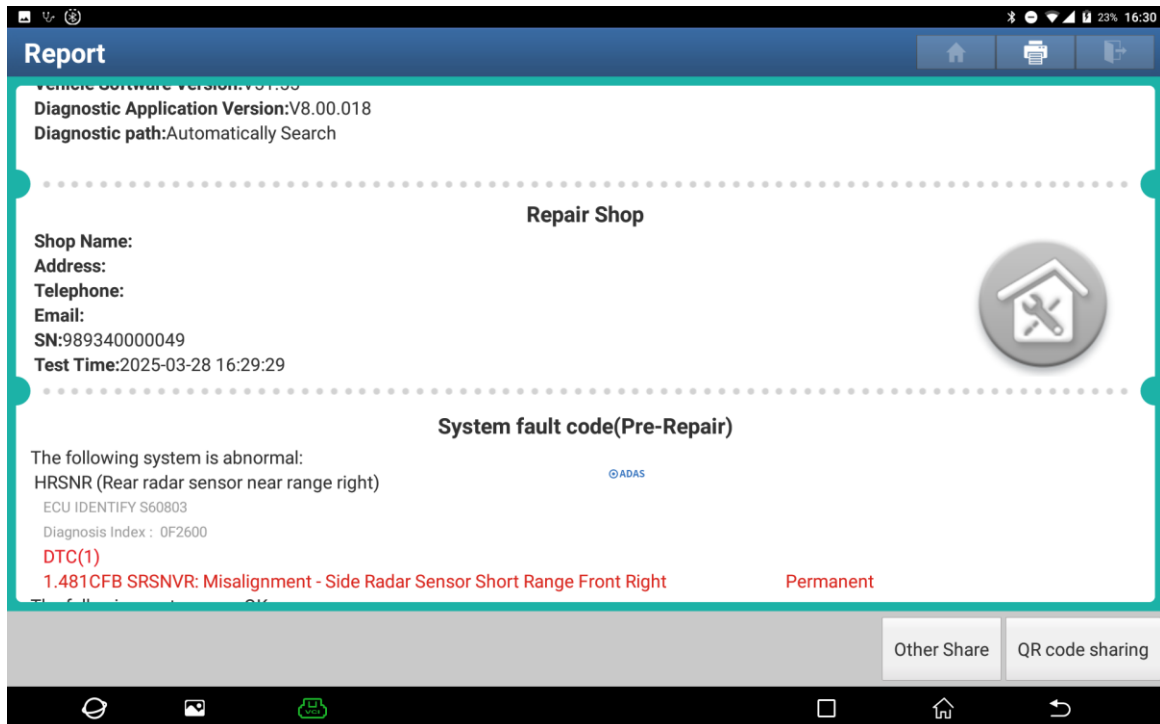


Figure 1

2. Choose [Special Function]. (See the following figure.)

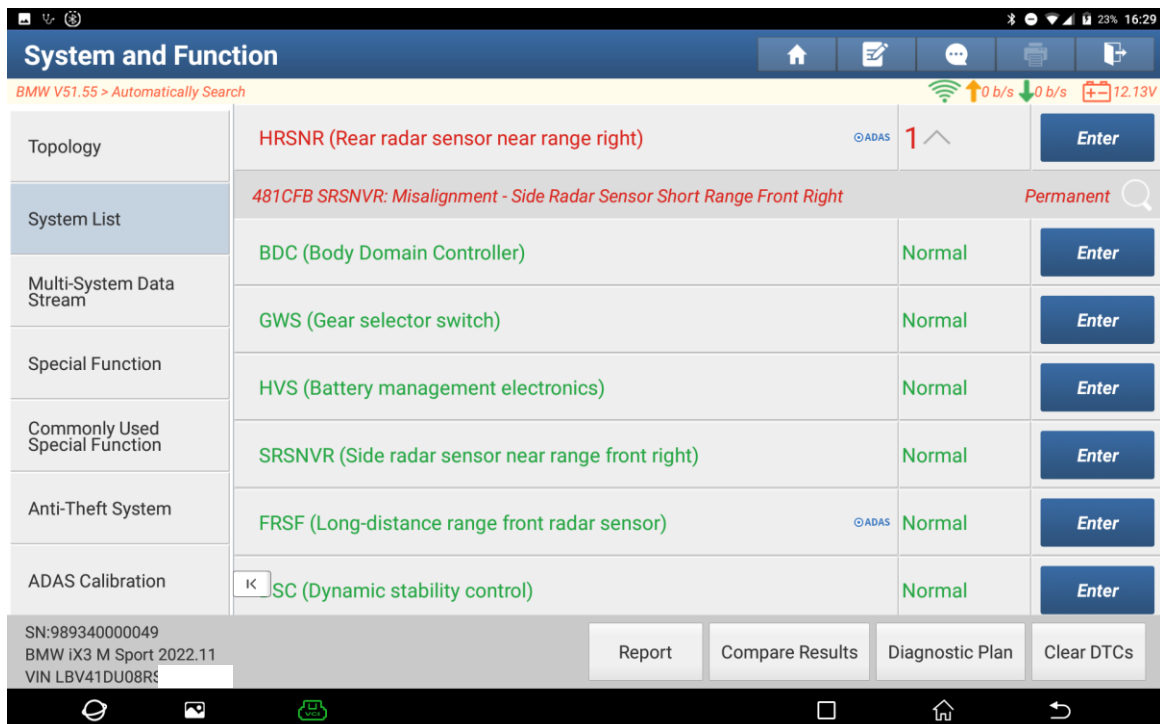


Figure 2

3. Choose [Driver Assistance]. (See the following figure.)

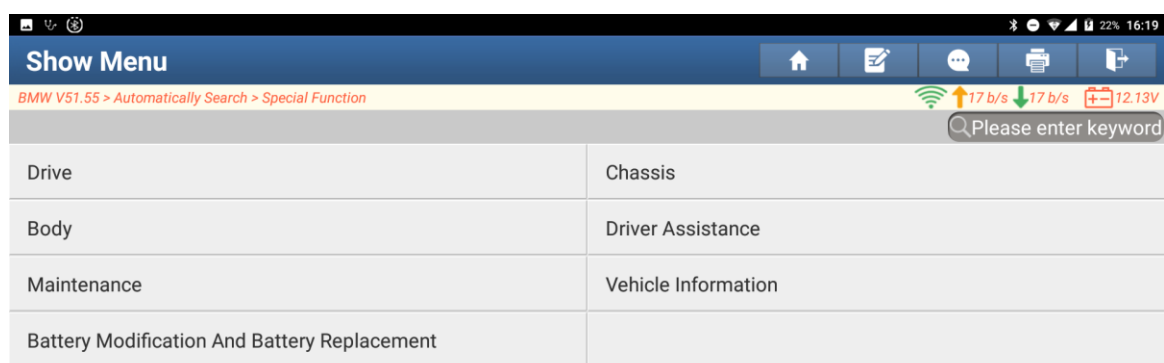


Figure 3

4. Choose [Short Range Radar Sensors: Reset Correction Angle]. (See the following figure.)

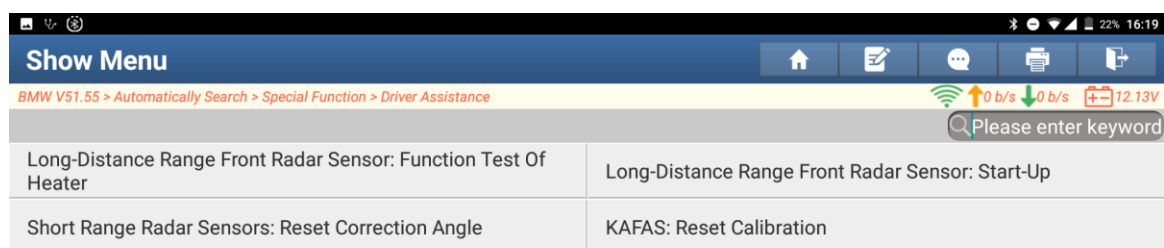


Figure 4

5. Click [F1]. (See the following figure.)

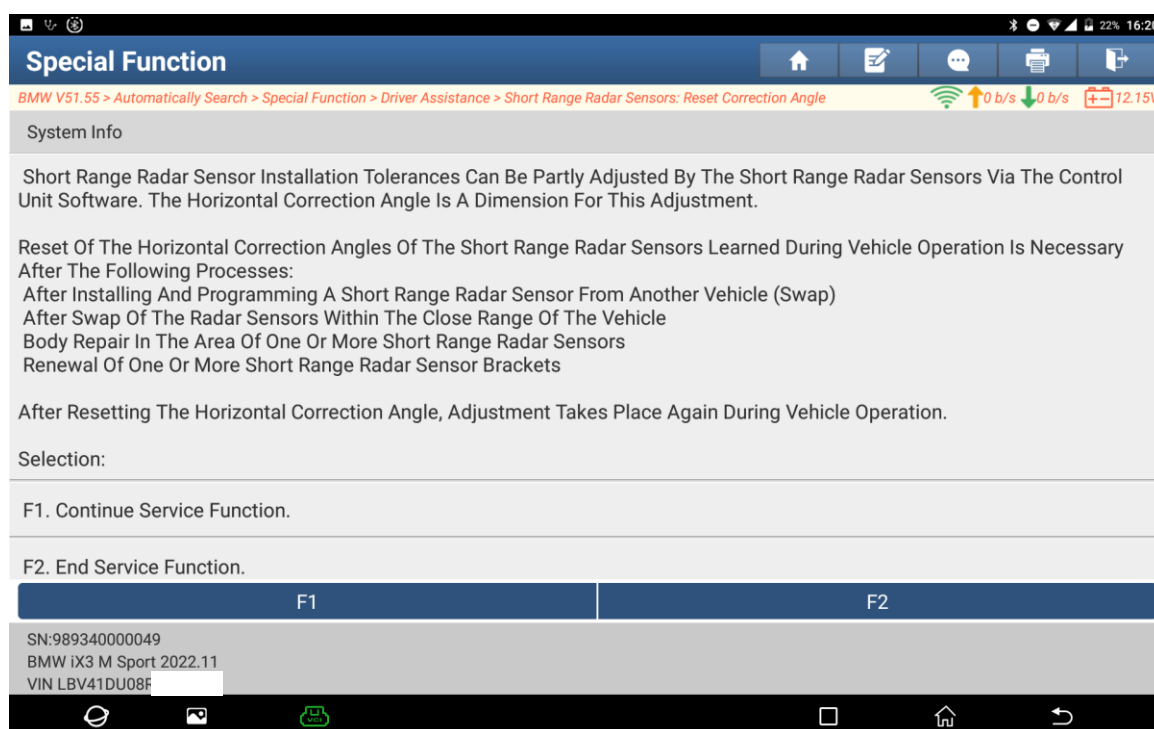


Figure 5

6. The short-range radar has been correctly fixed. Click [Yes]. (See the following figure.)

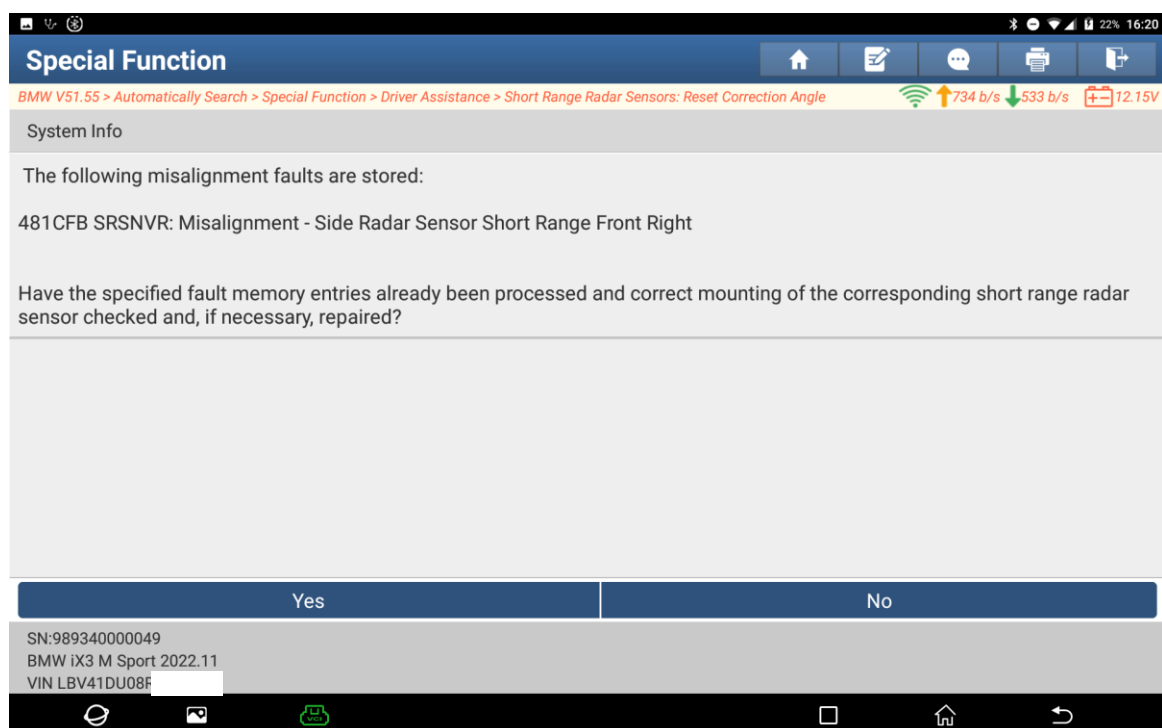


Figure 6

7. Choose [F3.SRSNVR - Side Radar Sensor Near Range Front Right]. (See the following figure.)

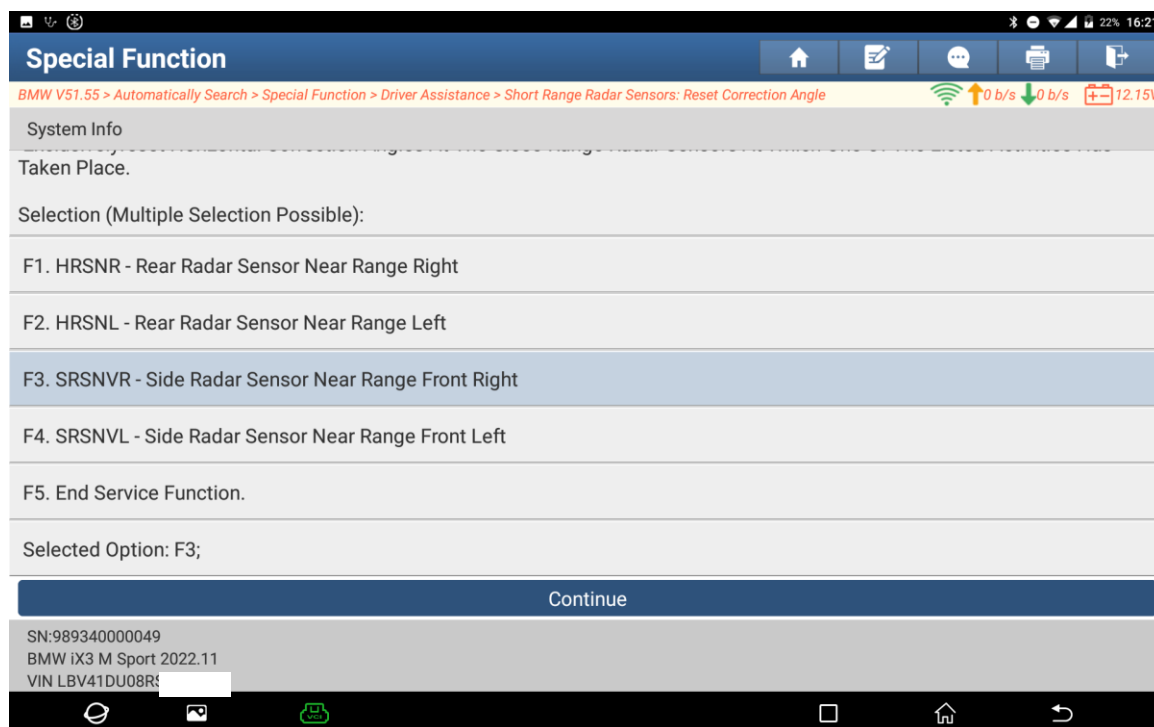


Figure 7

8. The selected short-range radar sensor correction angle has been successfully reset. Click [Continue]. (See the following figure.)

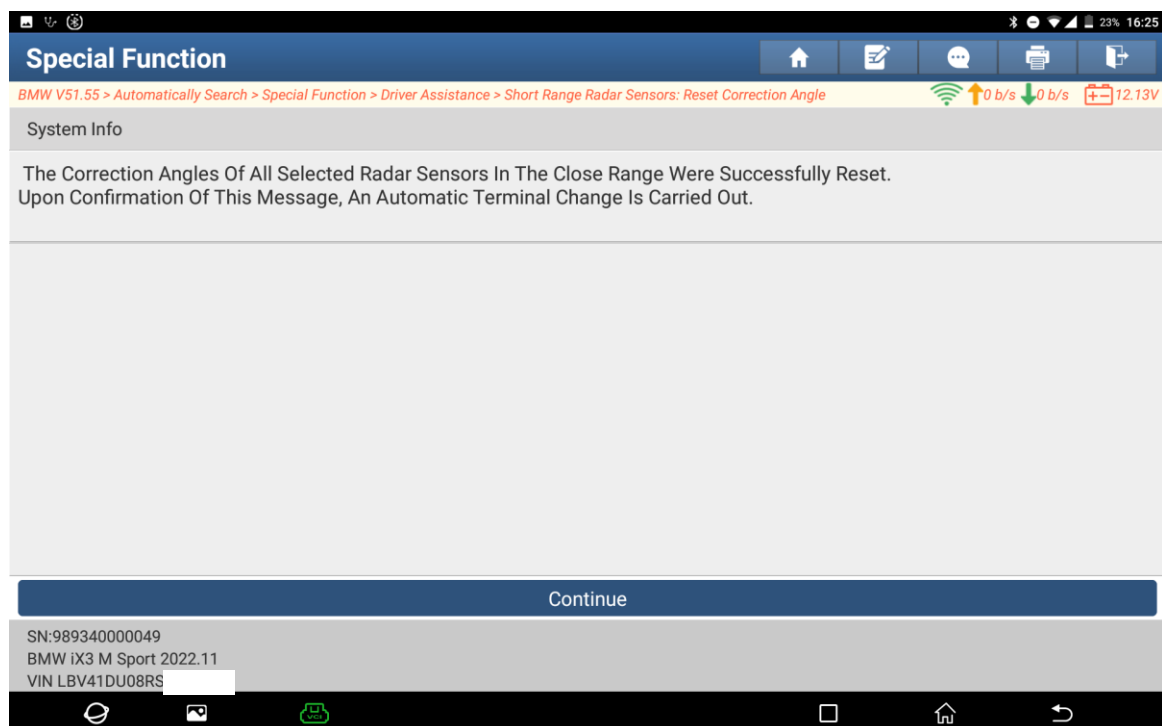


Figure 8

9. Save the fault report. There is no DTC. Drive the vehicle, and the vehicle learns the horizontal correction angle of the short-range radar sensor during driving. (See the following figure.)

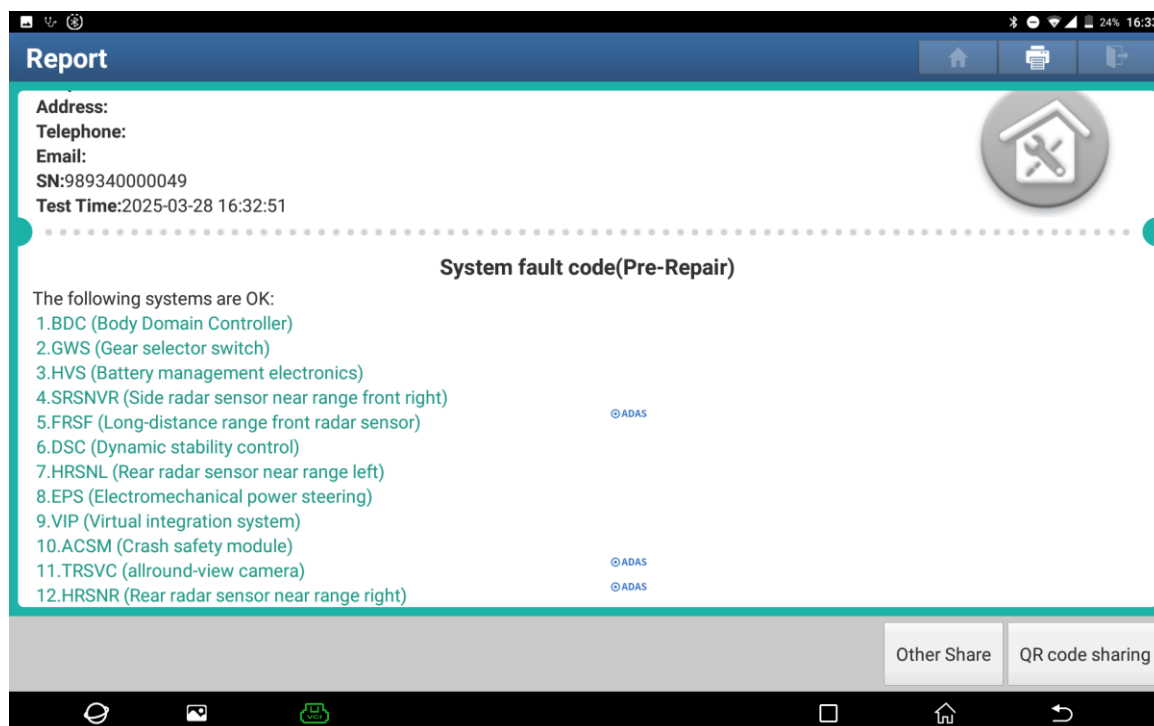


Figure 9

Statement:

The content of this document is copyrighted by LAUNCH TECH CO., LTD., and no individual or organization may quote or reprint it without consent.