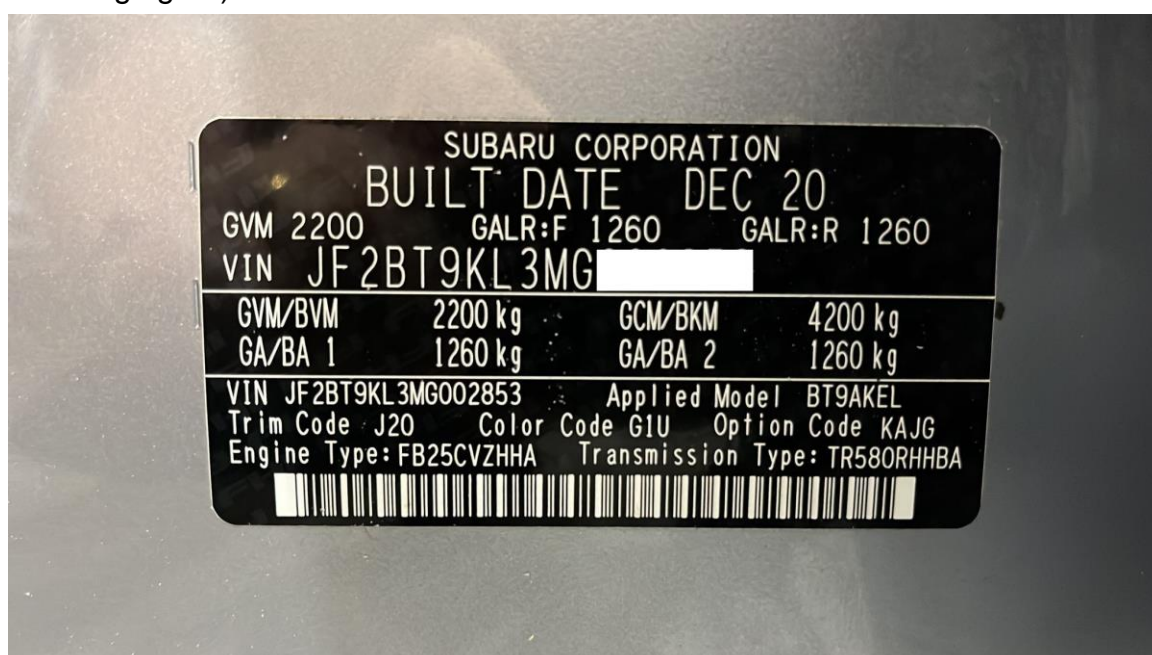


# Subaru Outback Steering Angle Learning

**Function Description:** Steering angle learning

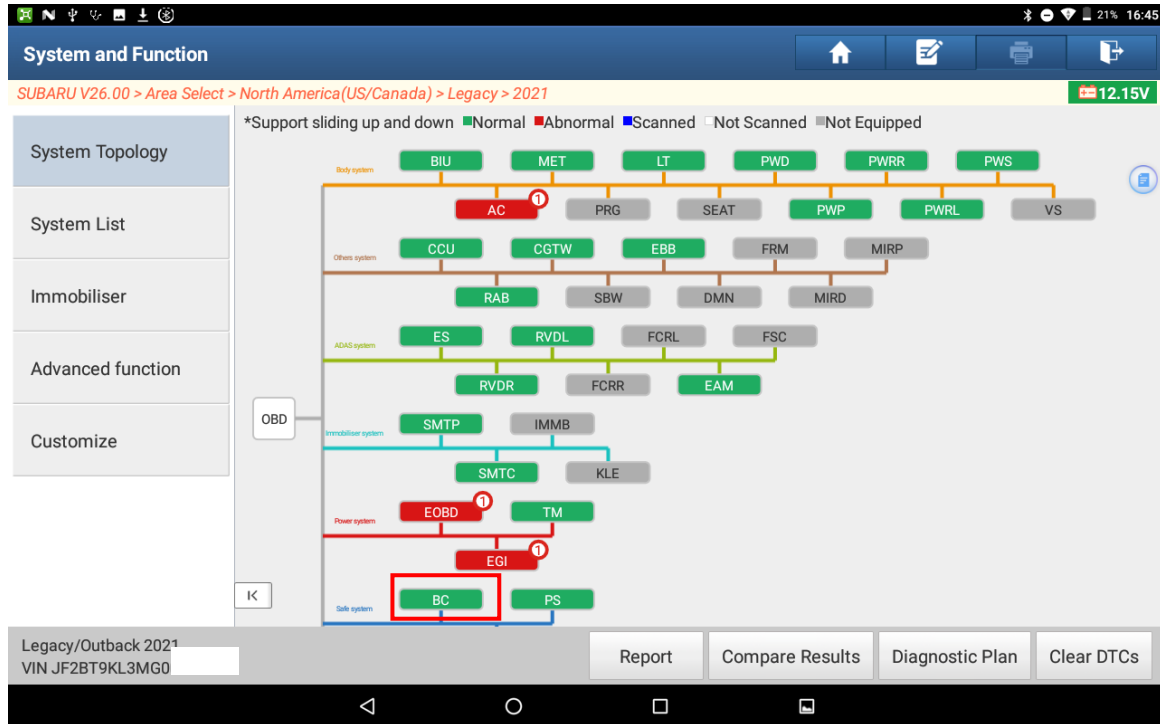
**Supported Products:** Launch PRO or PAD series comprehensive diagnostic equipment

**Tested Model:** Subaru Outback VIN: JF2BT9KL3MG\*\*\*\*\* (See the following figure)

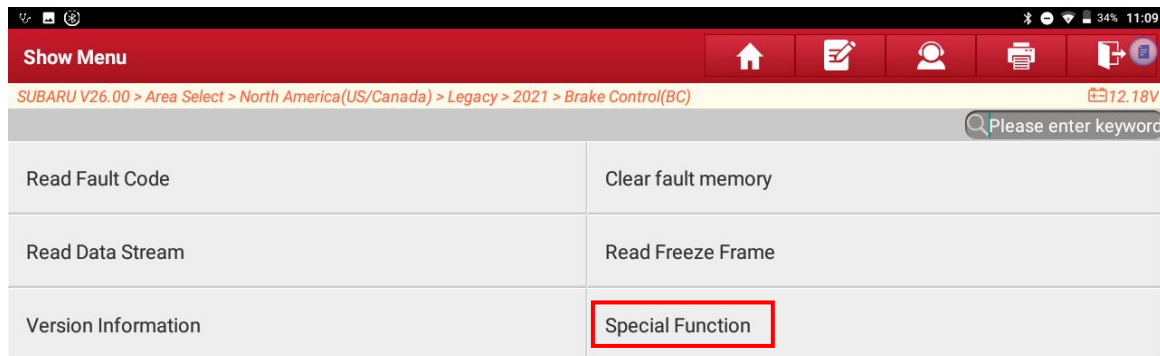


# Procedure:

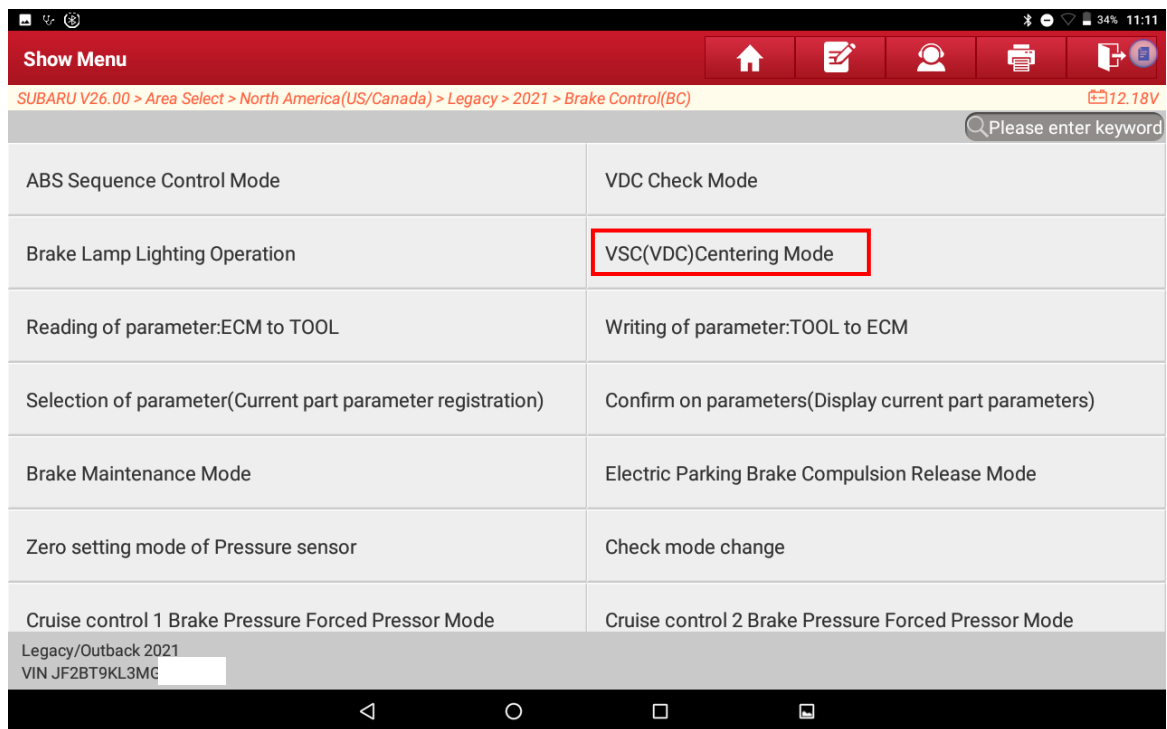
1. Access the BC system. (See the following figure.)



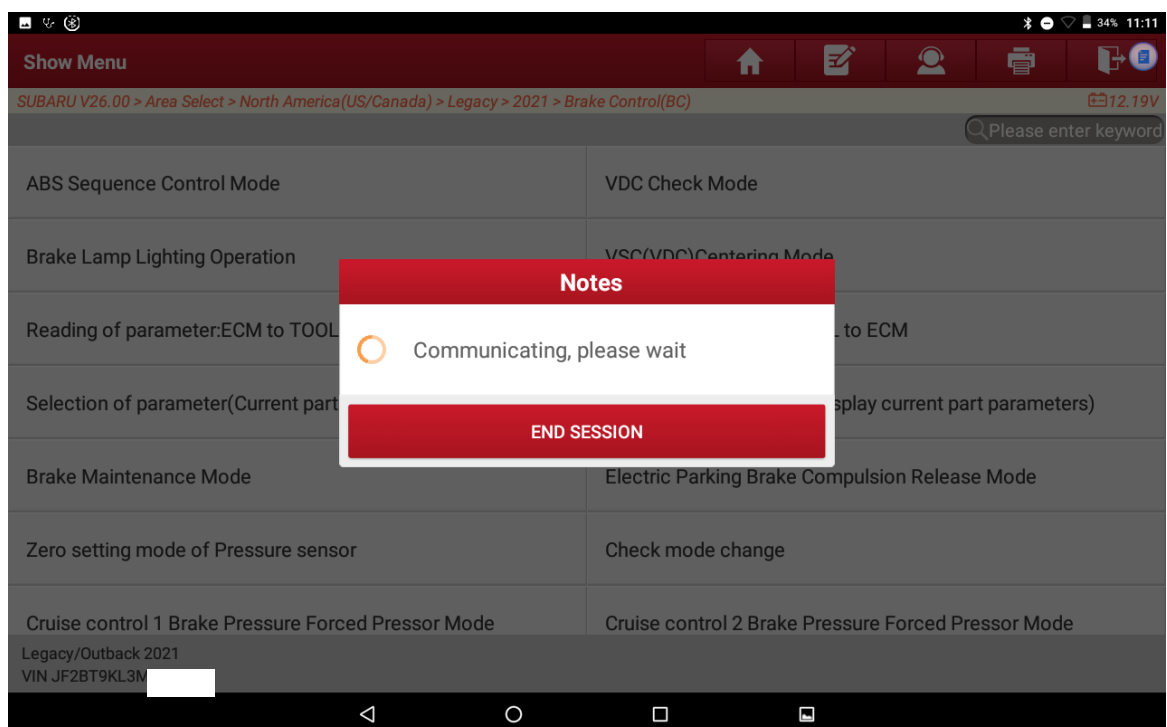
2. Choose [Special Function]. (See the following figure.)

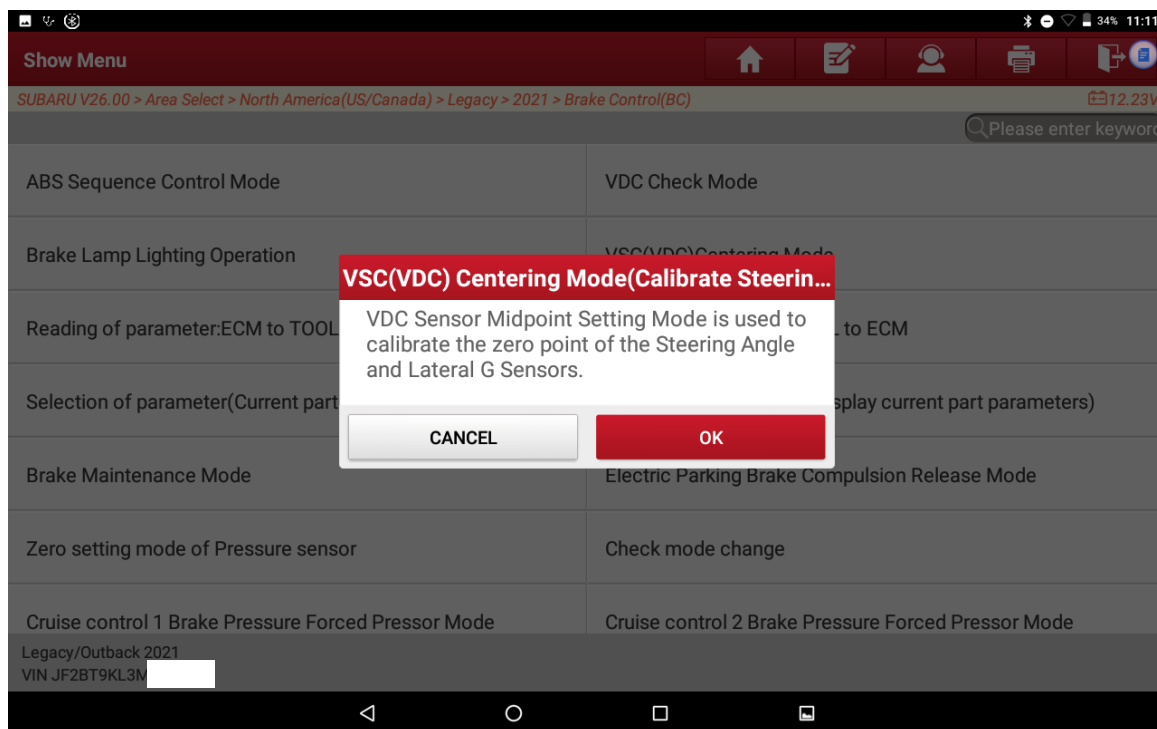


3. Choose [VSC (VDC) Centering Mode]. (See the following figure.)

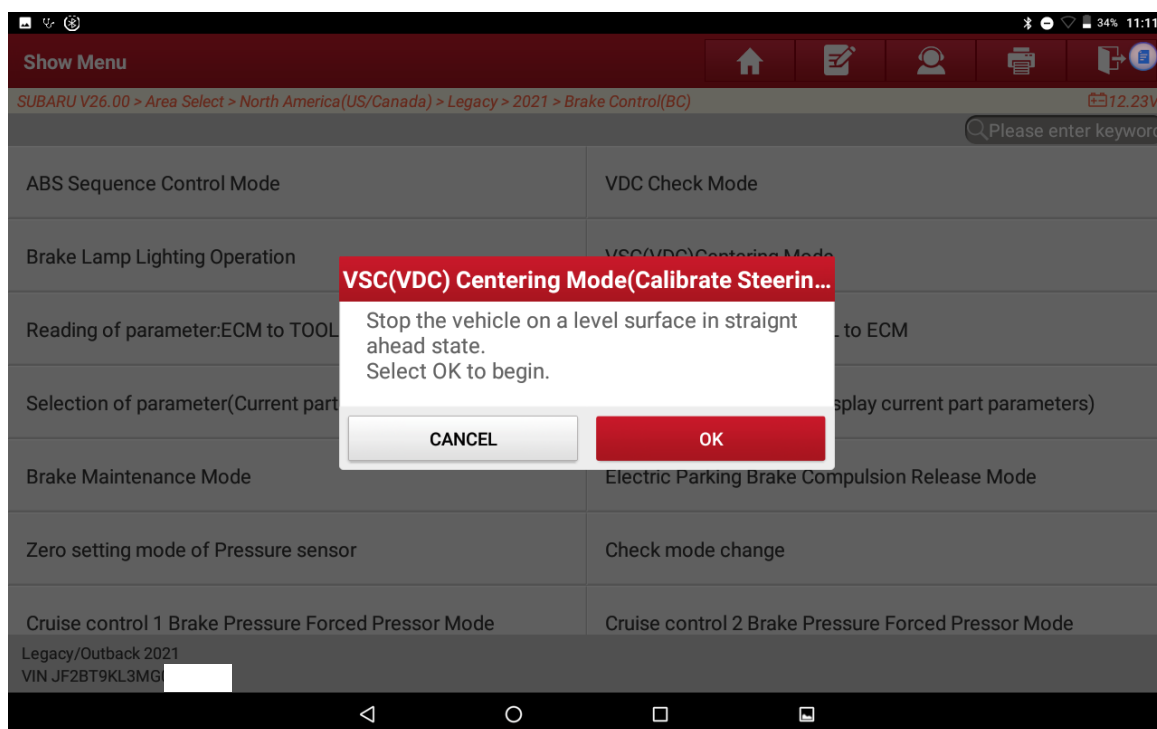


4. The following prompts will be displayed in sequence. (See the following figures.)

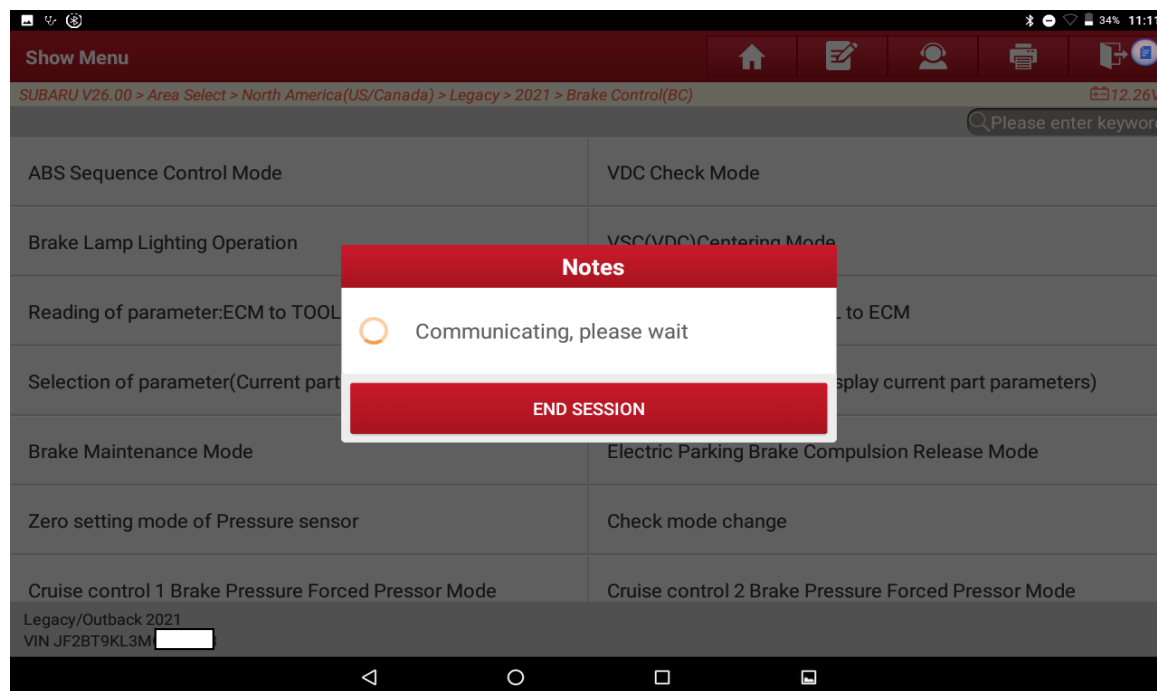




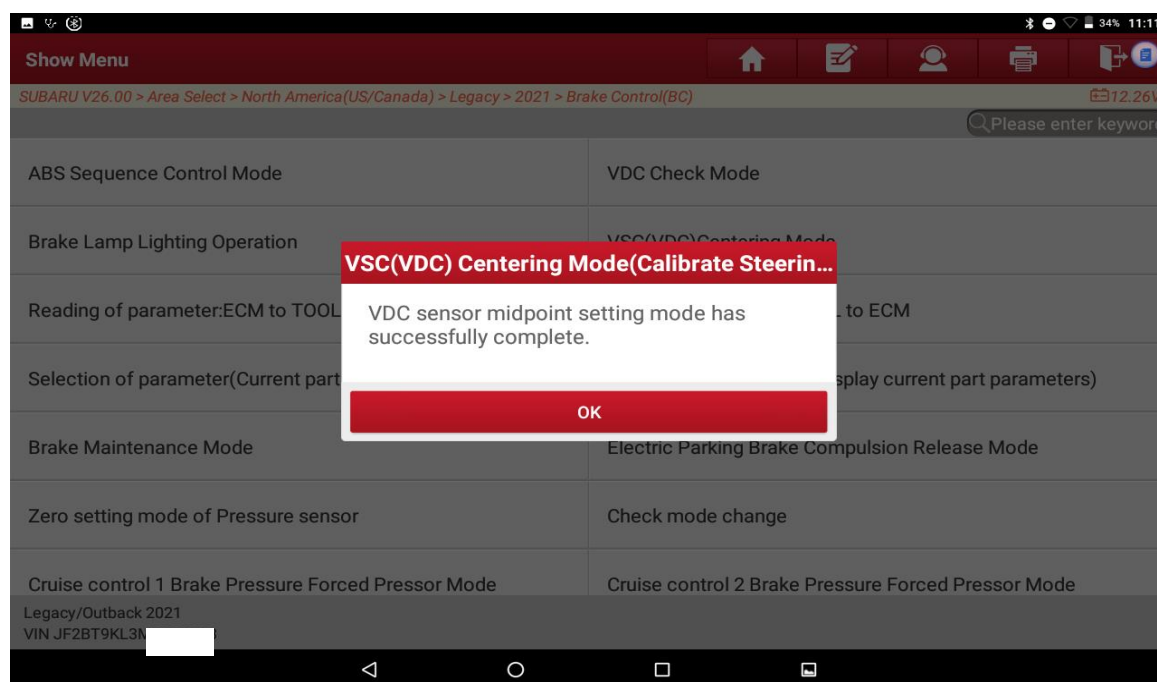
5. Click OK to continue. (See the following figure.)



6. Park the vehicle as prompted, and click OK to start steering angle learning. (See the following figure.)



7. Steering angle learning is completed. Click OK to end. (See the following figure.)



## Statement:

The content of this document is copyrighted by Shenzhen Launch Tech Co., Ltd., and no individual or organization may quote or reprint it without consent.