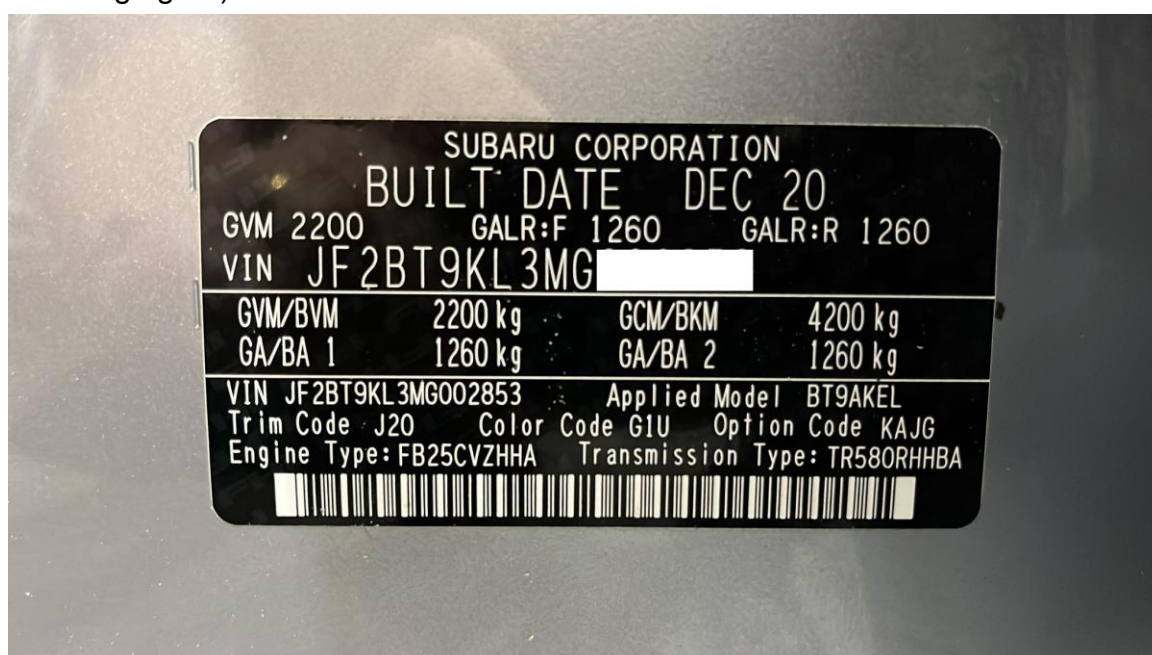


## Subaru Outback - Input VIN

**Function Description:** VIN registration

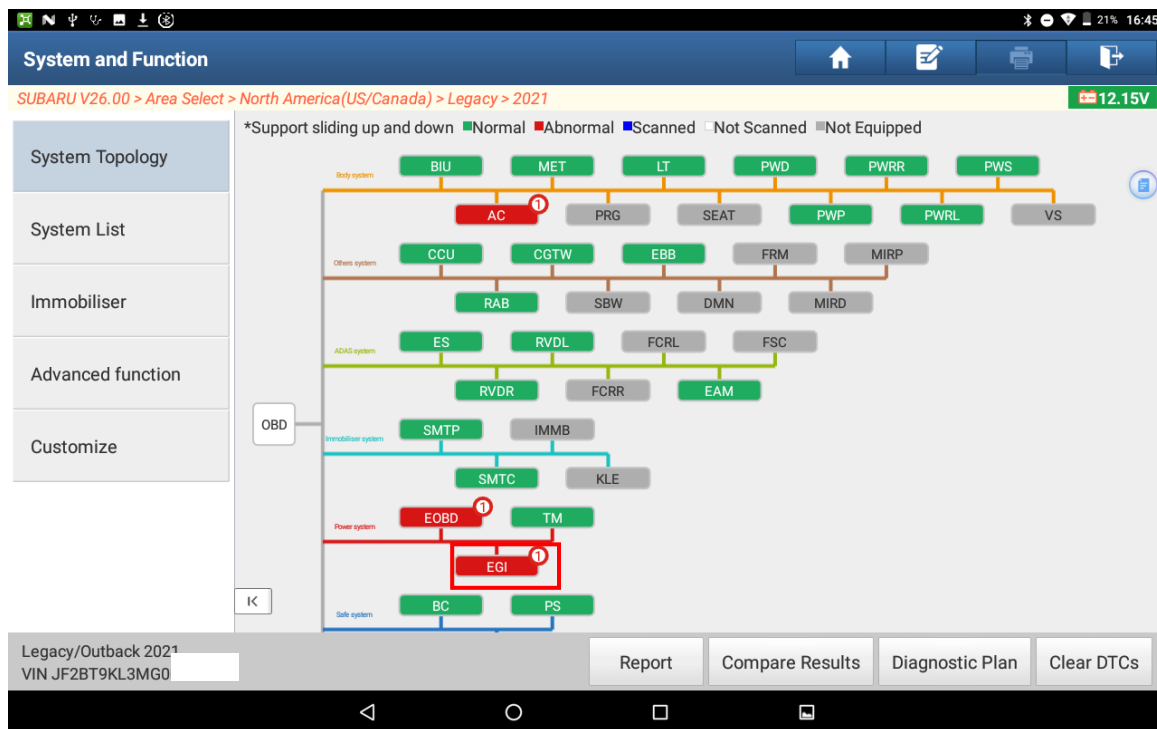
**Supported Products:** Launch PRO or PAD series comprehensive diagnostic equipment

**Tested Model:** Subaru Outback VIN: JF2BT9KL3MG\*\*\*\*\* (See the following figure)

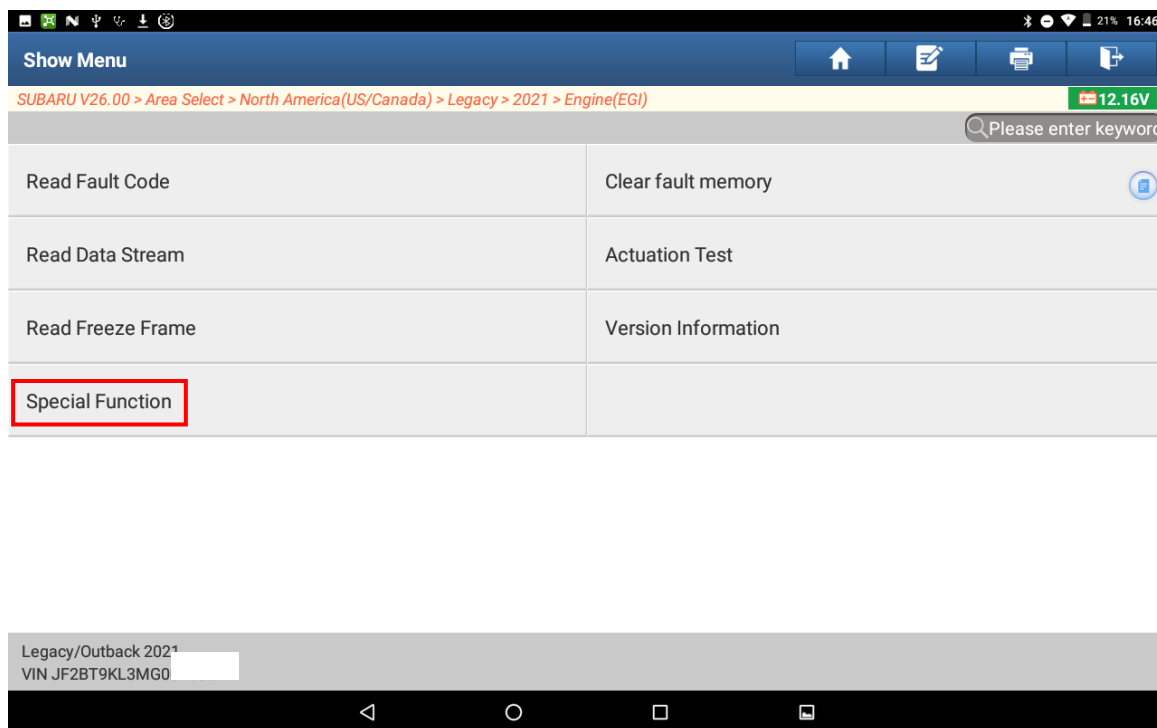


# Procedure:

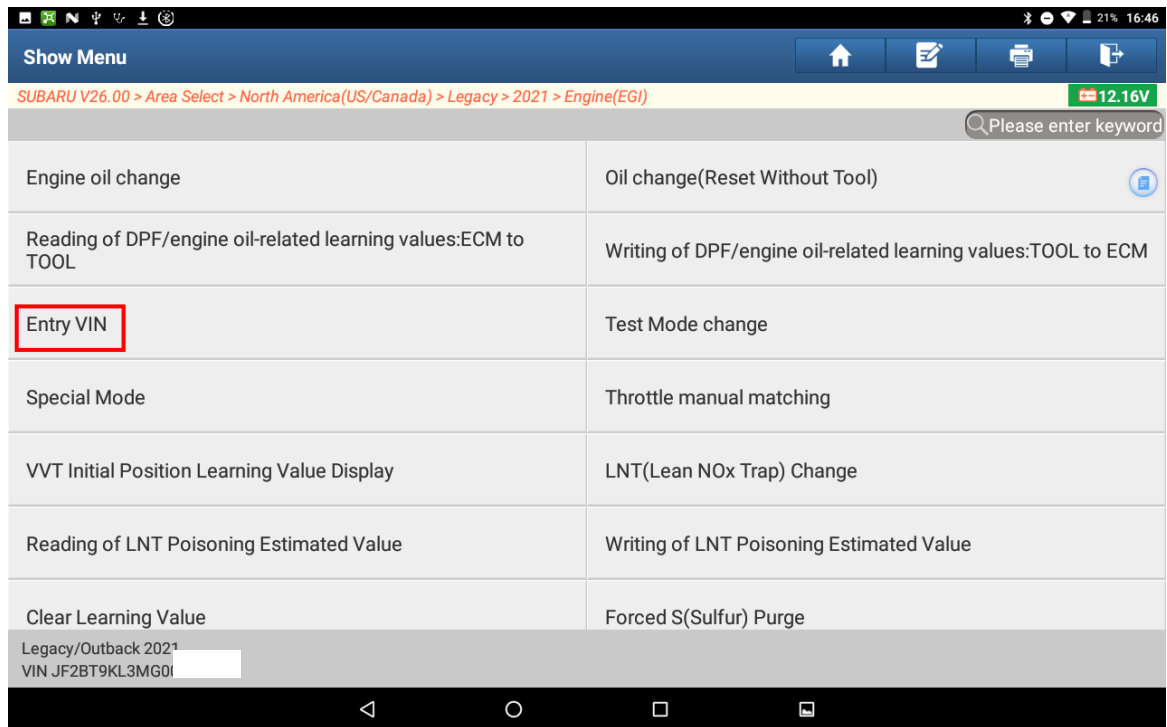
1. Access the EGI system. (See the following figure.)



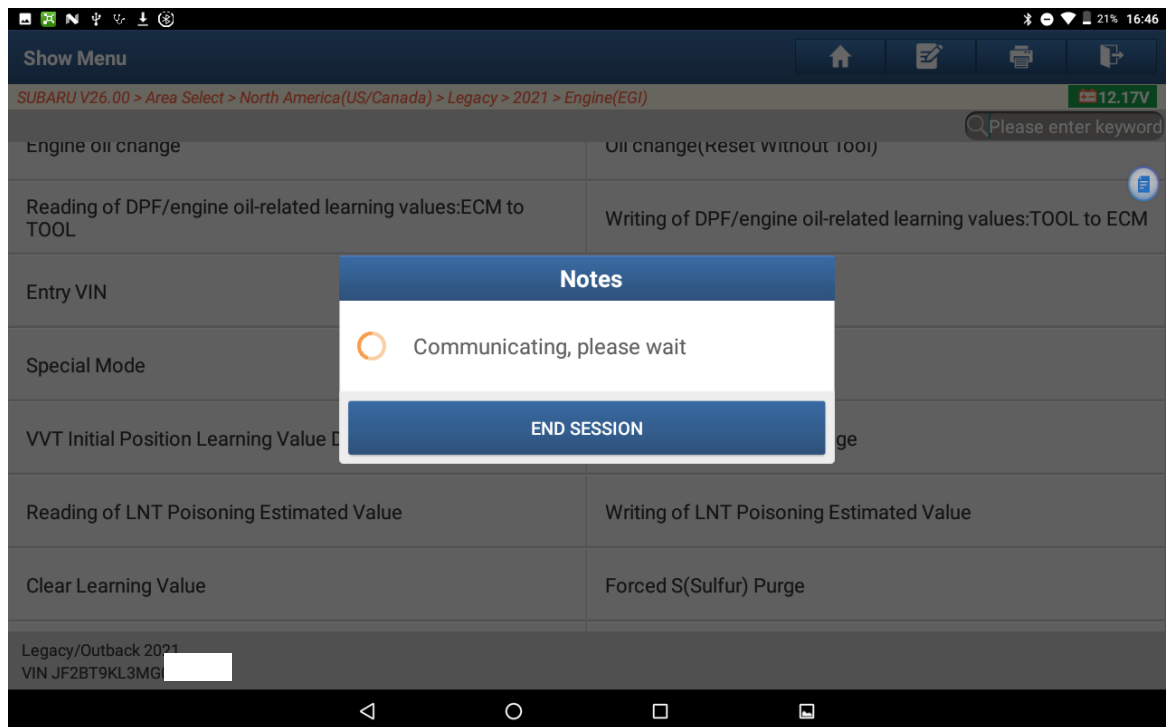
2. Choose [Special Function]. (See the following figure.)

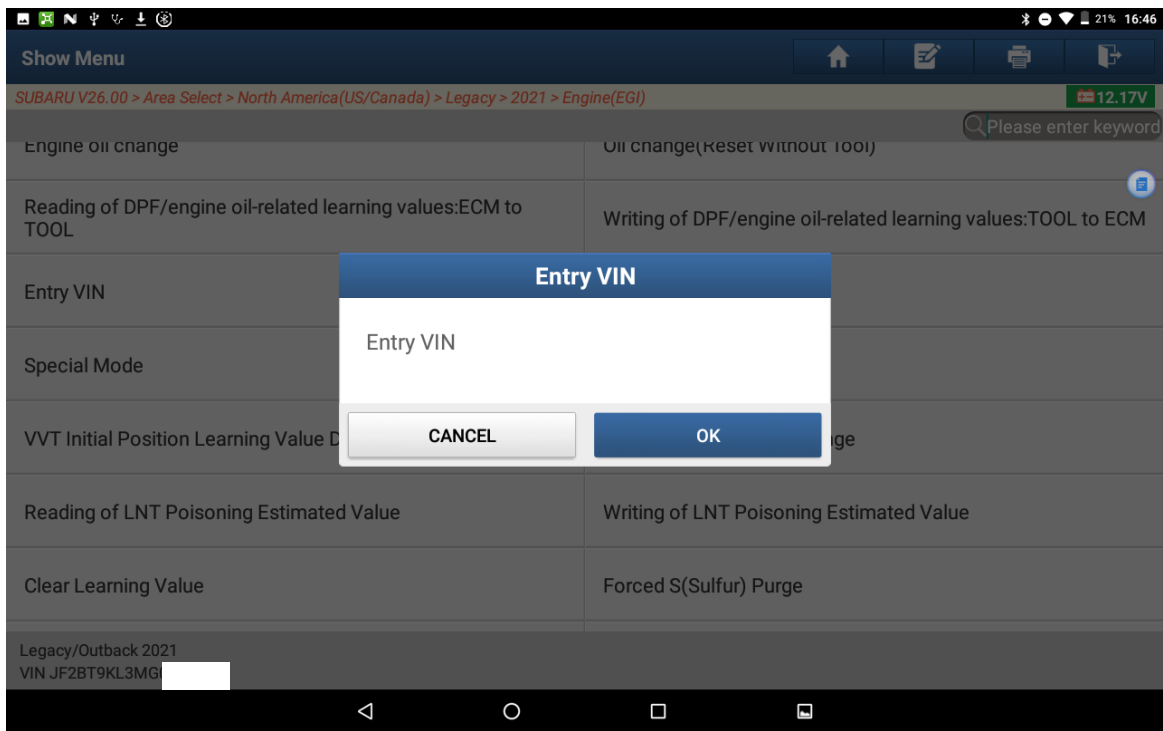
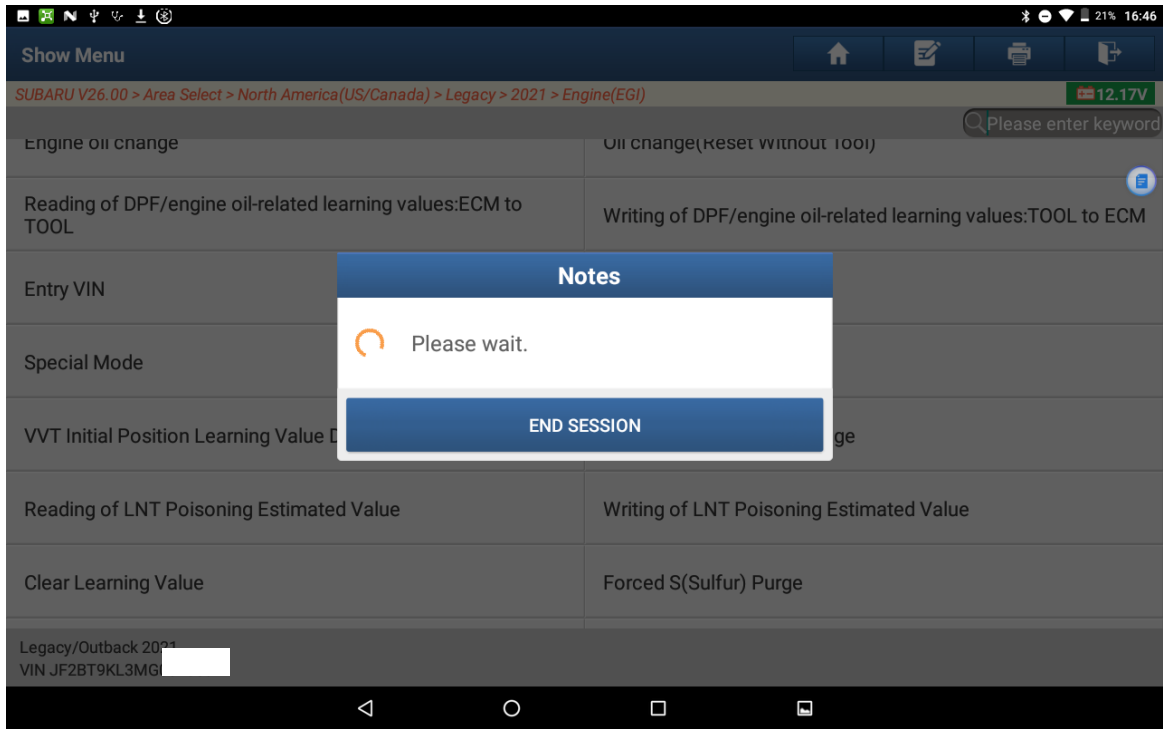


3. Choose [Entry VIN]. (See the following figure.)



4. The following prompts will be displayed in sequence. (See the following figures.)

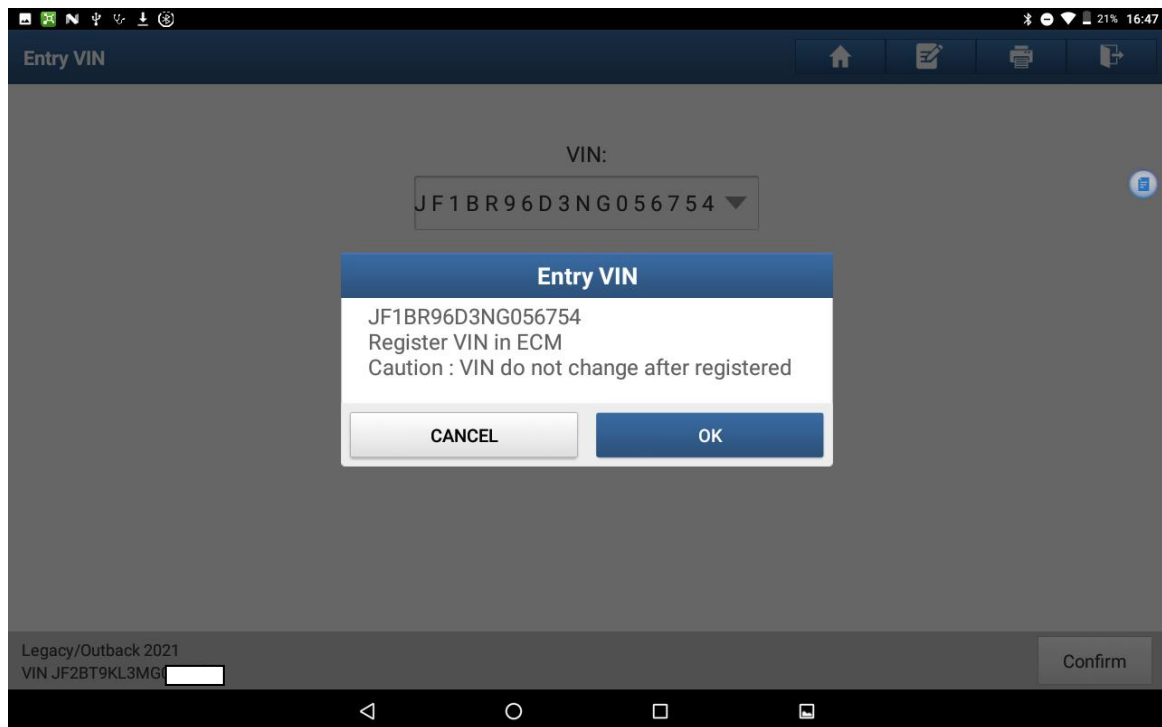




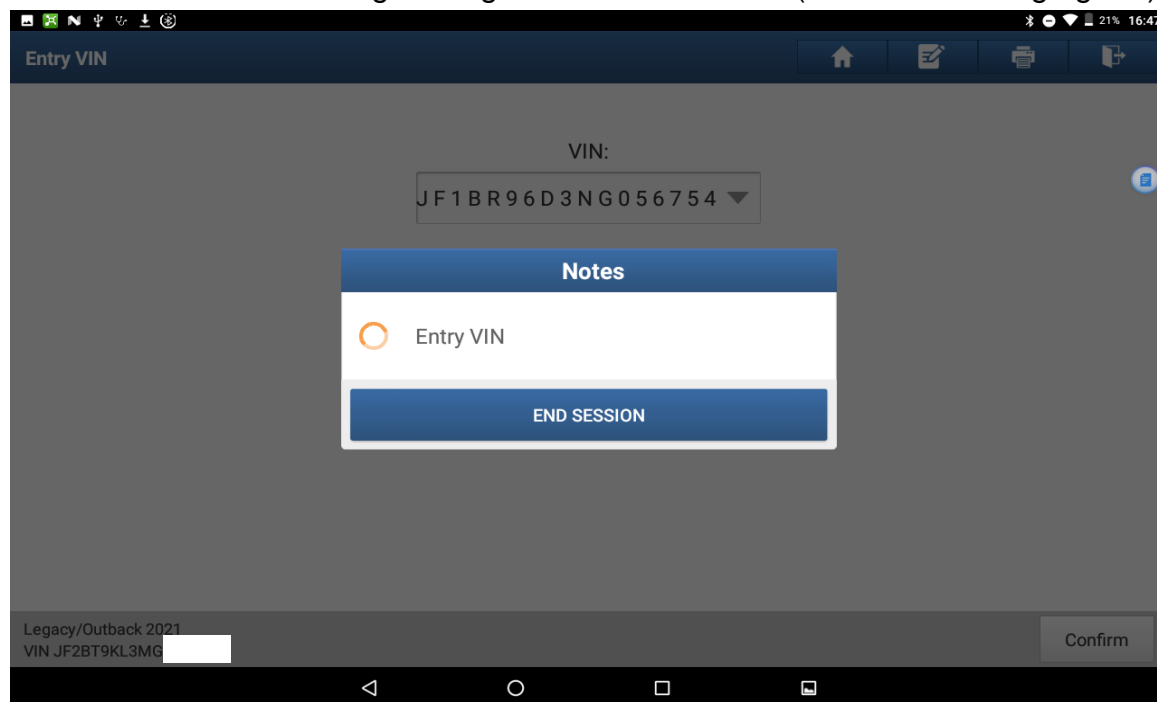
5. Click OK and enter the VIN to be registered. (See the following figure.)



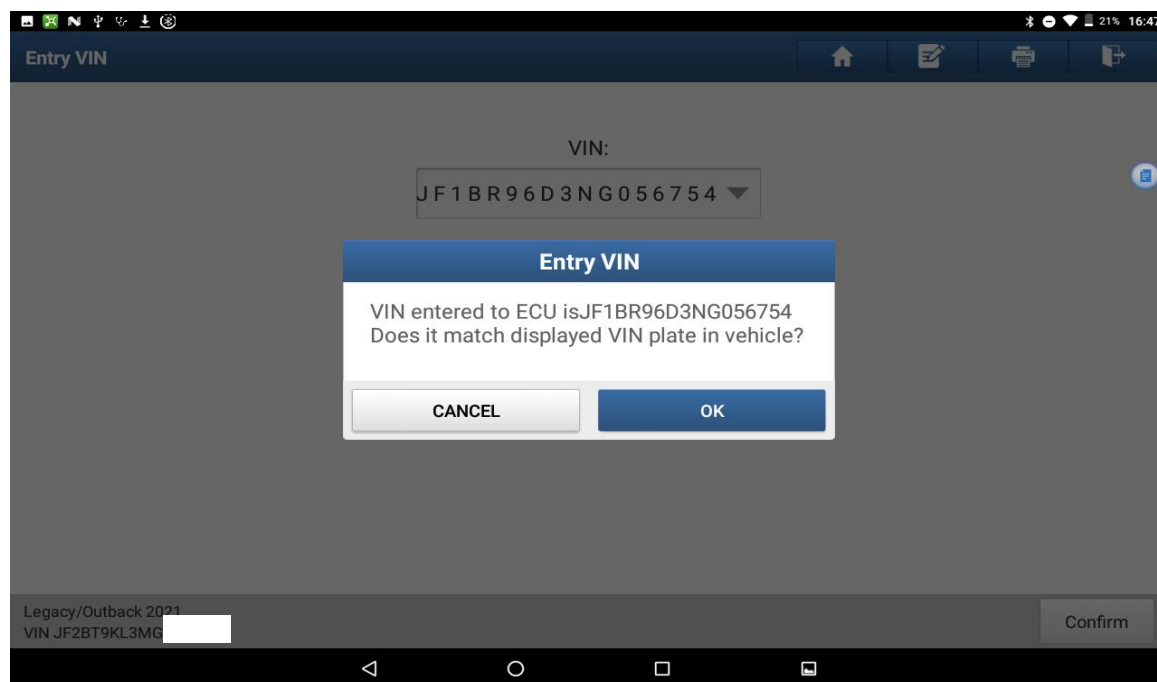
6. Click OK to check whether the entered VIN is correct. (See the following figure.)



7. Click OK to start writing the registration information. (See the following figure.)



8. After writing is completed, check whether it is consistent with that on the vehicle. Click OK to complete the VIN registration.



## Statement:

The content of this document is copyrighted by Shenzhen Launch Tech Co., Ltd., and no individual or organization may quote or reprint it without consent.