

# Lexus LS500h Wireless Code Registration

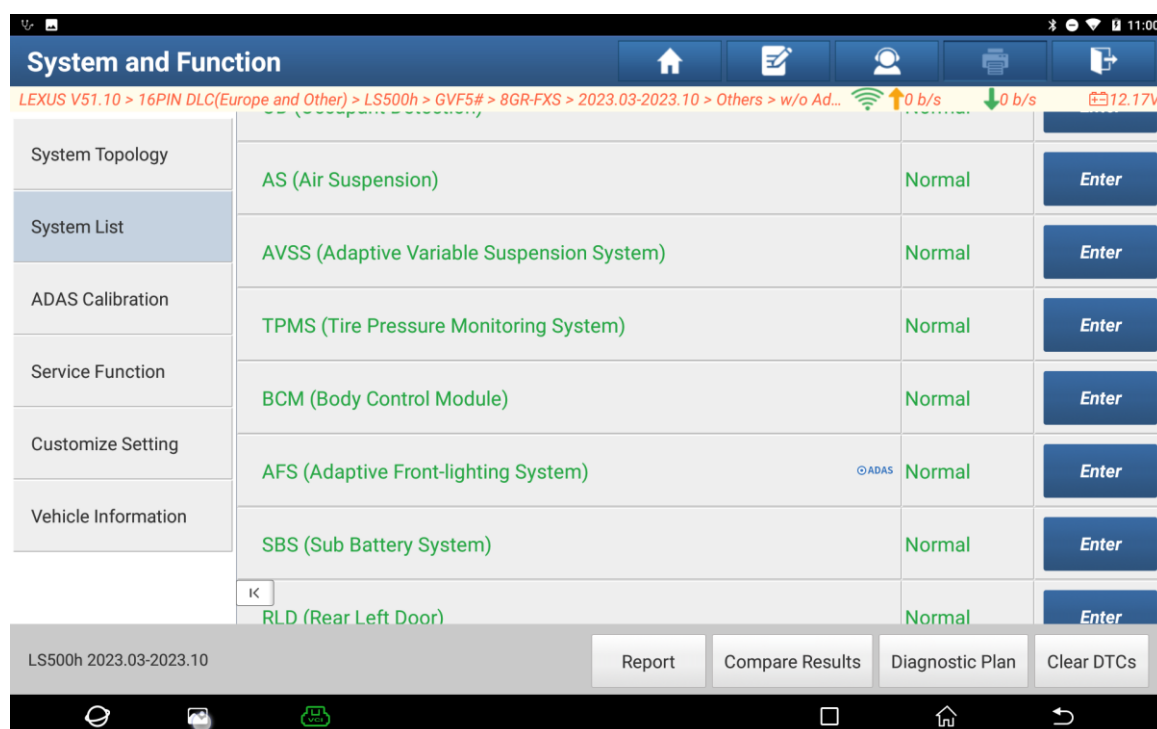
**Function Description:** This function is used to add a wireless remote control.

**Supported Products:** Launch PRO or PAD series comprehensive diagnostic equipment

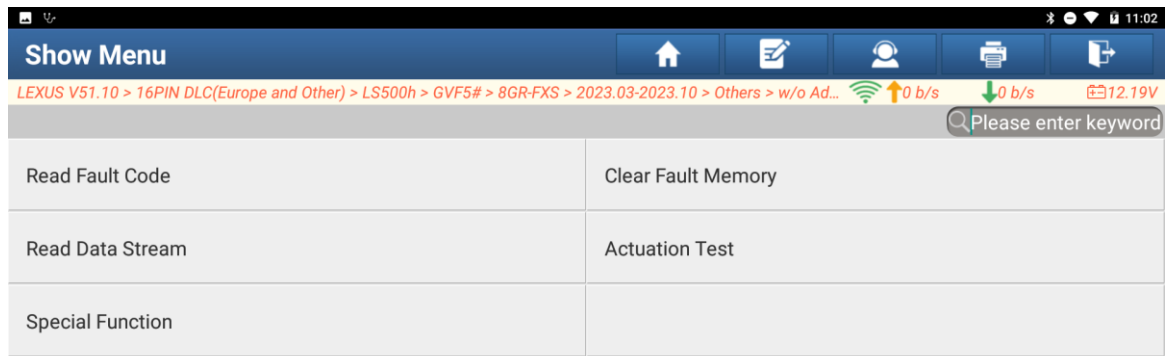
**Tested Model:** Lexus LS500h 2023

## Procedure:

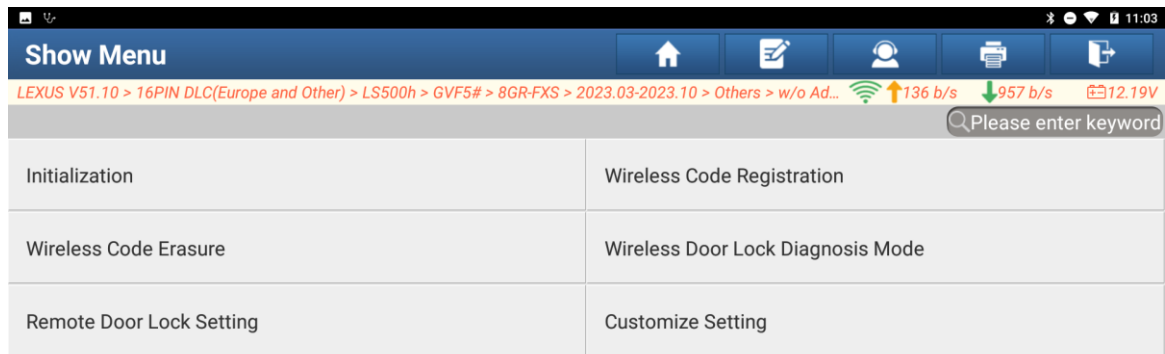
1. Click “BCM (Body Control Module)” to access it. (See the following figure.)



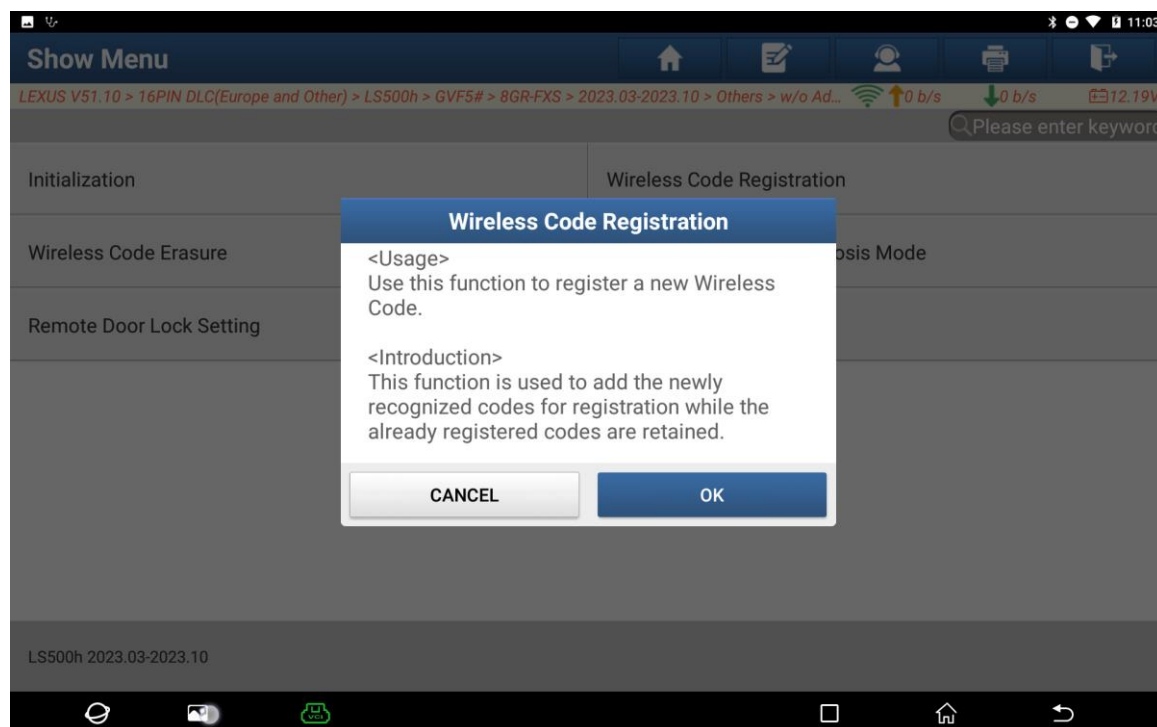
2. Choose “Special Function”. (See the following figure.)



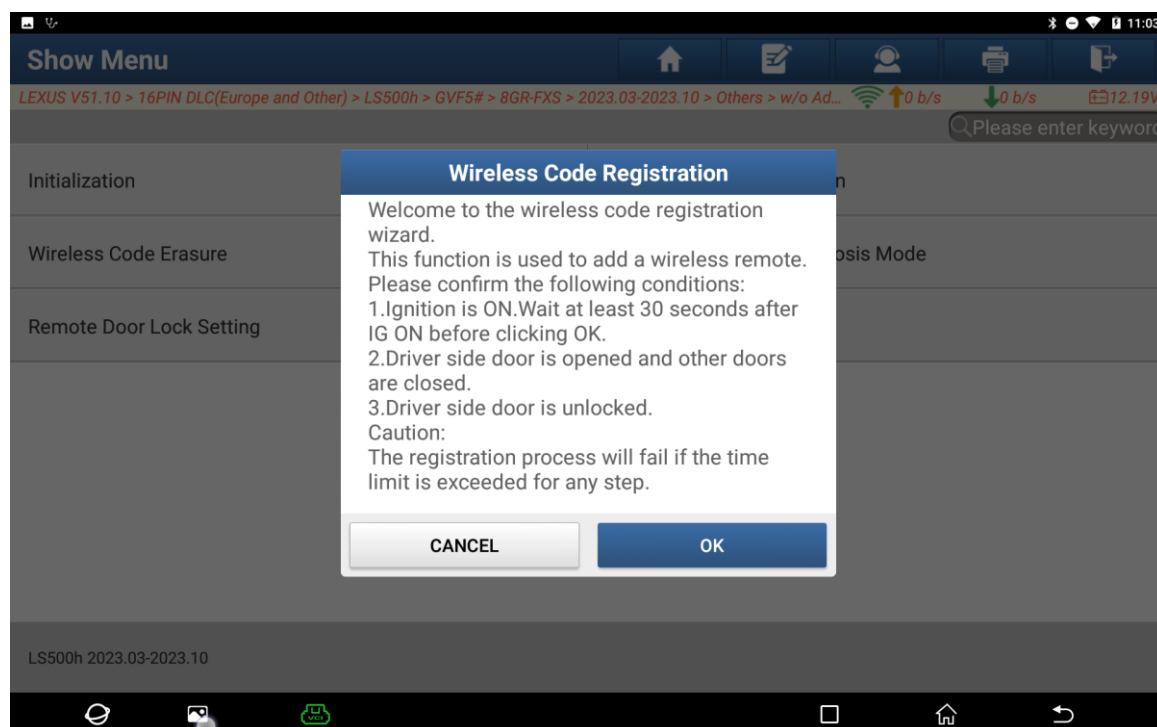
3. Choose “Wireless Code Registration”. (See the following figure.)



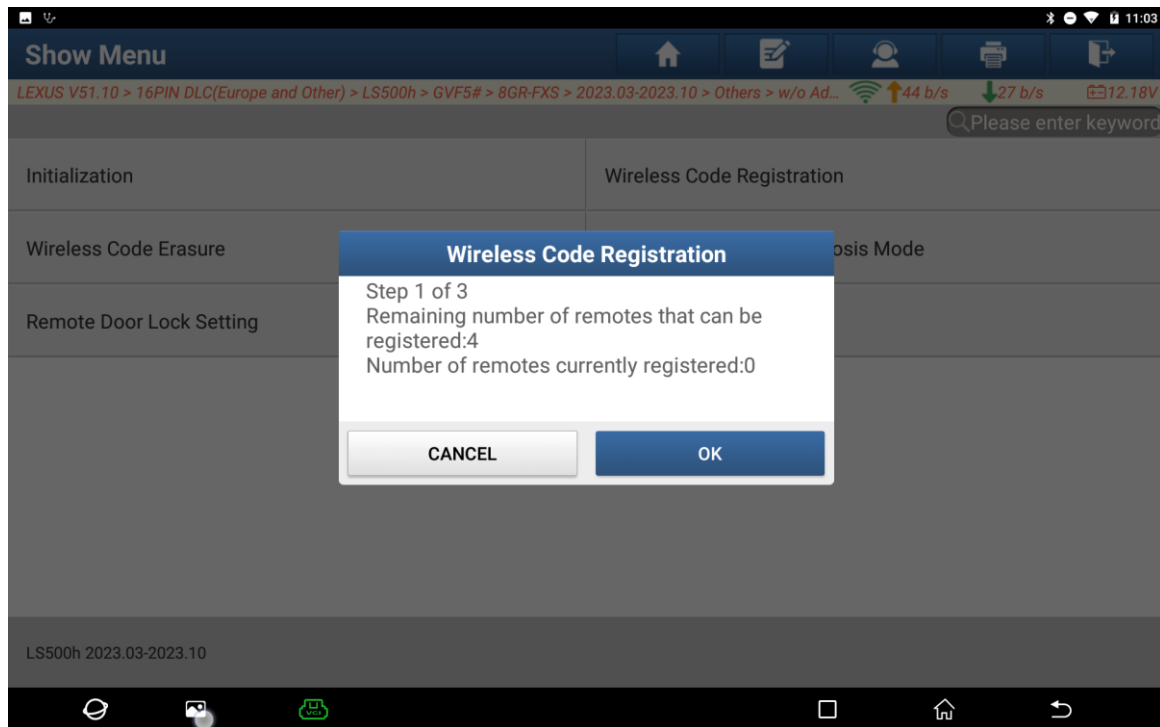
4. Use this function when registering a new wireless code. Click “OK”. (See the following figure.)



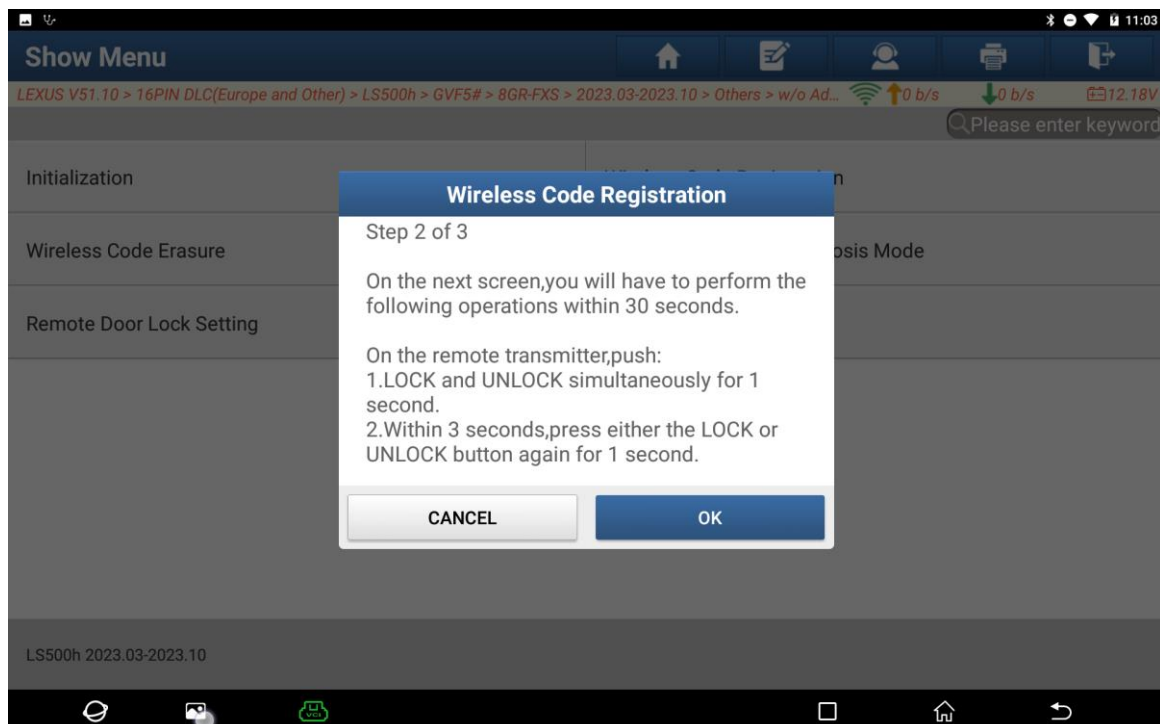
5. Confirm the following conditions and click “OK”. (See the following figure.)



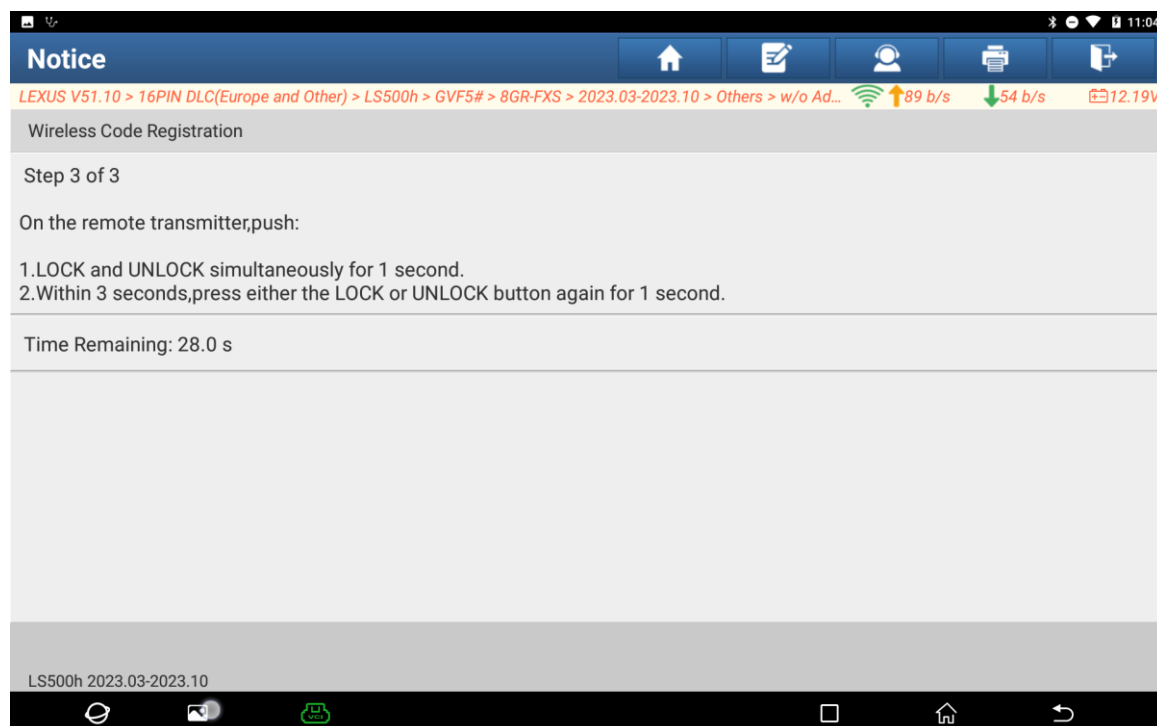
6. Check if there are any registrable remote controls and click “OK”. (See the following figure.)



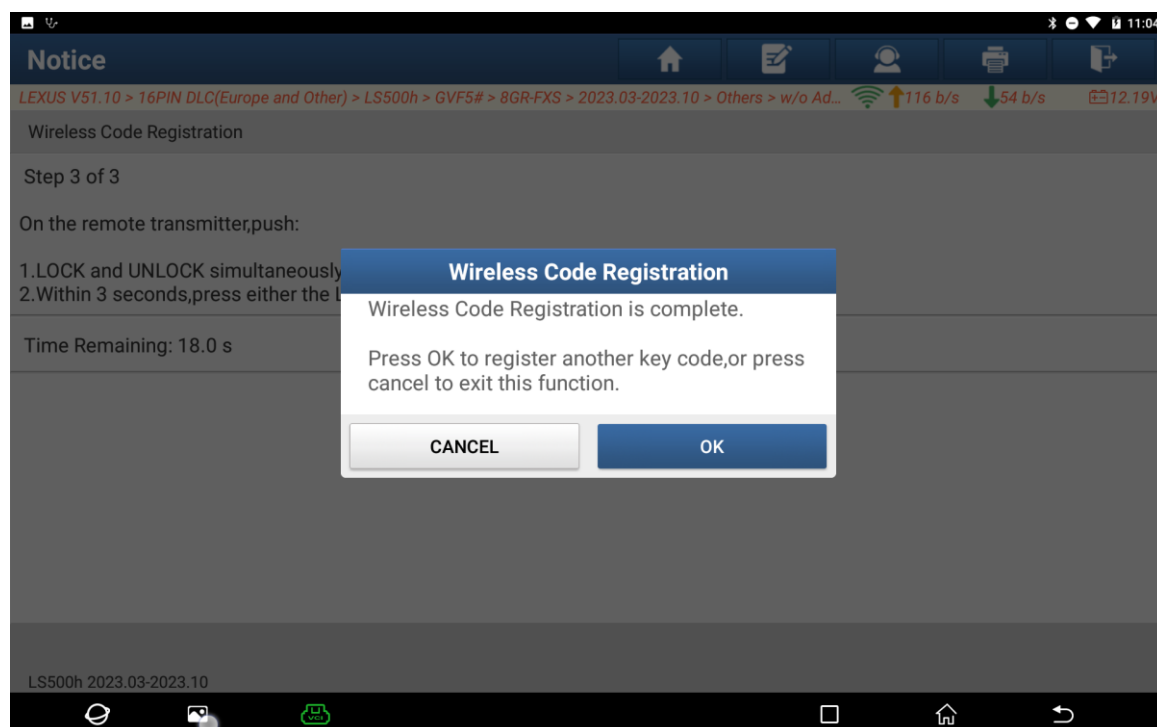
7. Perform the following operations within 30 seconds and click “OK”. (See the following figure.)



8. Wait for 30 seconds. (See the following figure.)



9. Registration is successful. Click “OK” to register again or click CANCEL to exit the function. (See the following figure.)



## Statement:

The content of this document is copyrighted by Shenzhen Launch Tech Co., Ltd., and no individual or organization may quote or reprint it without consent.