

## Read Anti-Theft Passwords from Engines - Peugeot and Citroen

### I. Function Introduction

Anti-theft Password Reading - All Lost Anti-theft Password Reading – ECM. This function is used in some cases, when the BSI cannot read anti-theft passwords, then you can use the programmer to read anti-theft passwords from engines in the BENCH mode.

### II. Requirements

Device required: IMMO PRO/PAD

Software required: Peugeot, Citroen V10.20 and later

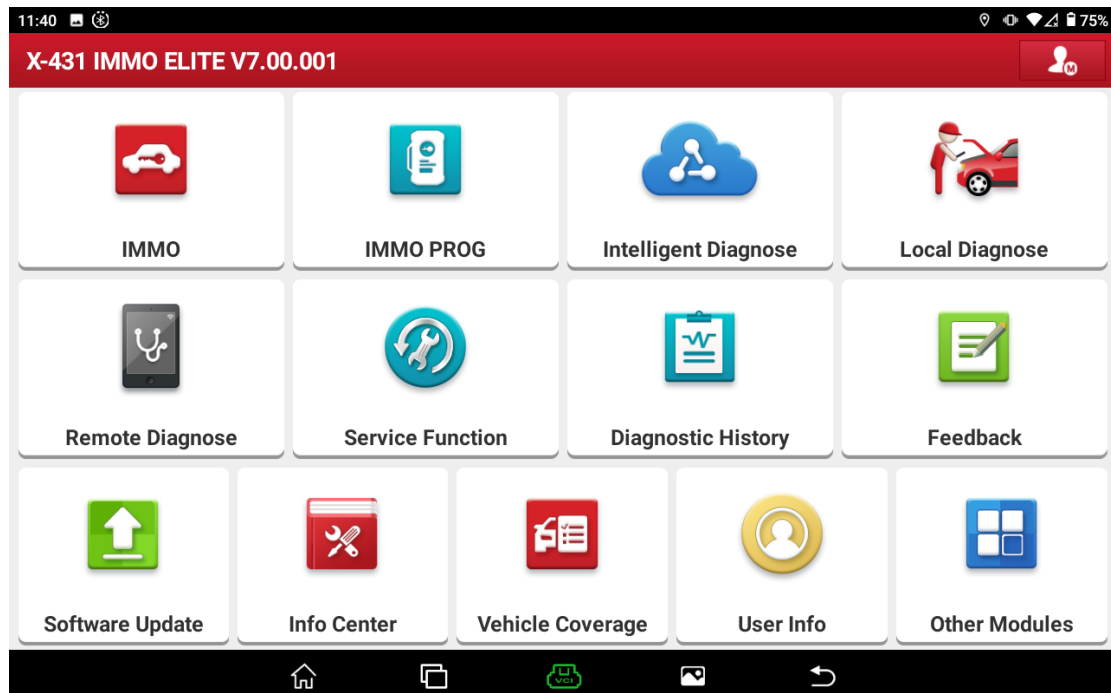
### III. Procedure

It is roughly divided into three steps:

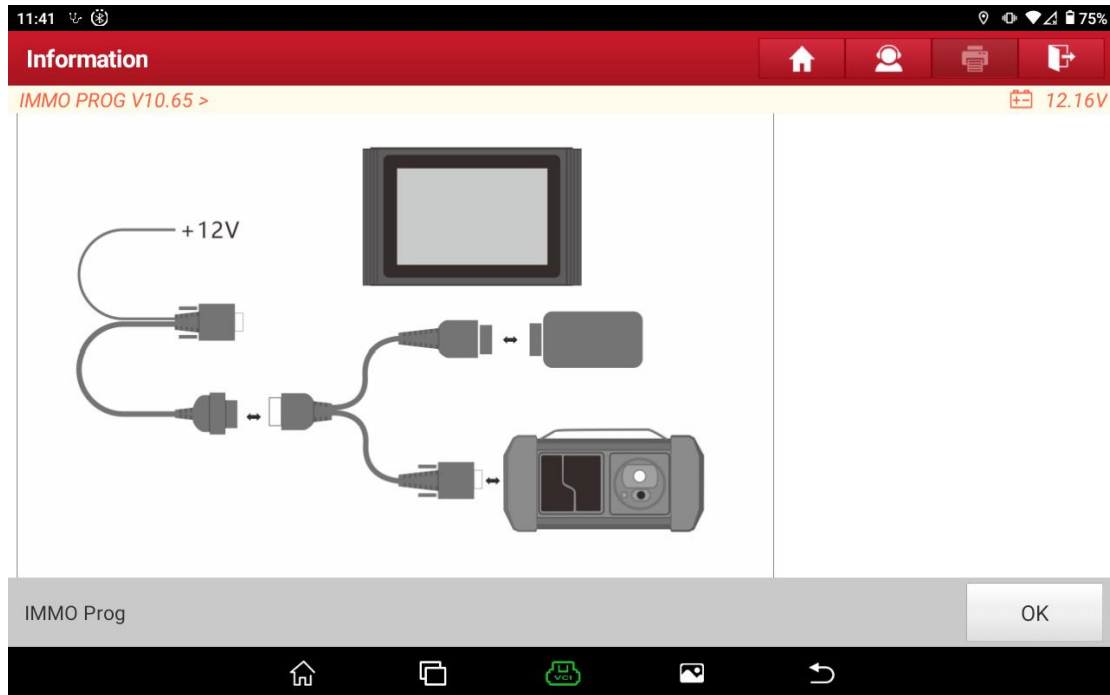
- Open the programmer software to obtain the wiring diagram, and connect the engine computer in the BENCH mode.
- Use the IMMO programming software to read out the EEPROM data of the engine computer and save it as a backup.
- Enter the Peugeot/Citroen IMMO software, and decrypt the anti-theft password by loading the EEPROM data.

The following details the operation steps and related precautions for reading the engine password.

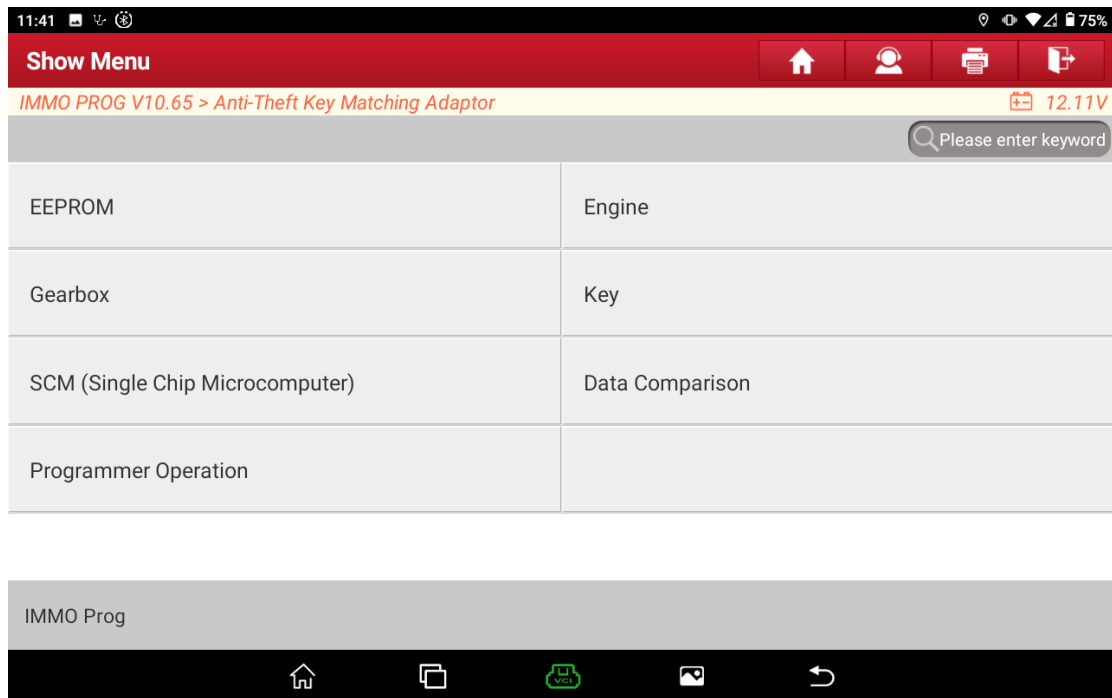
1. Enter the [IMMO PEOG] software.



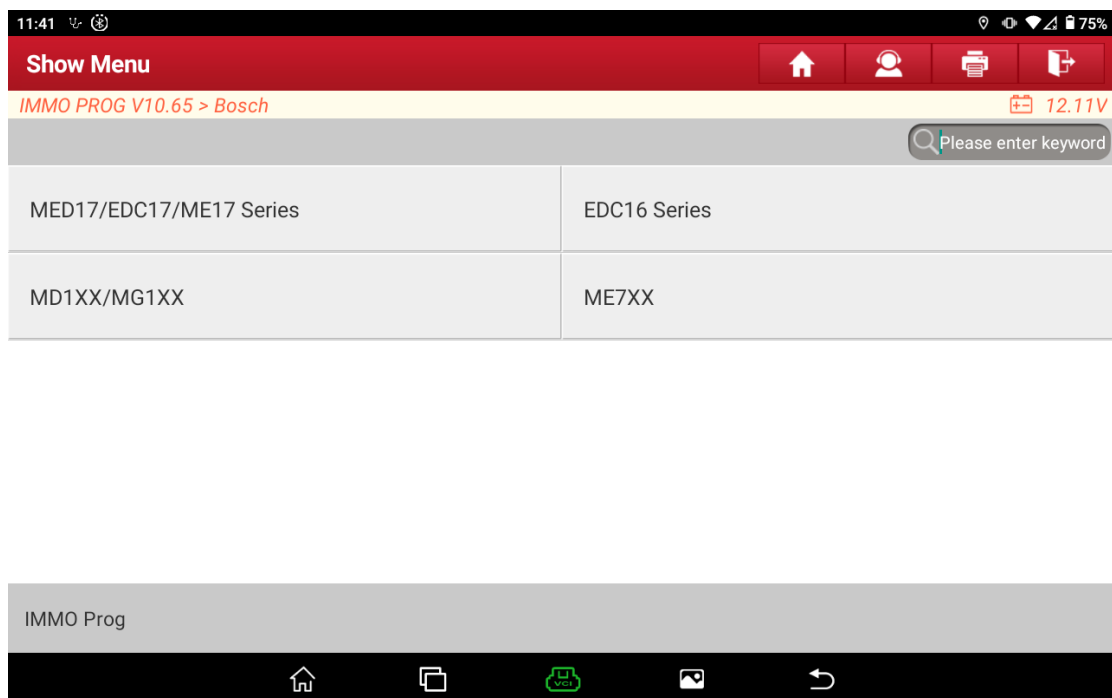
2. Connect the device and programmer hardware as shown in the figure, and then click OK.



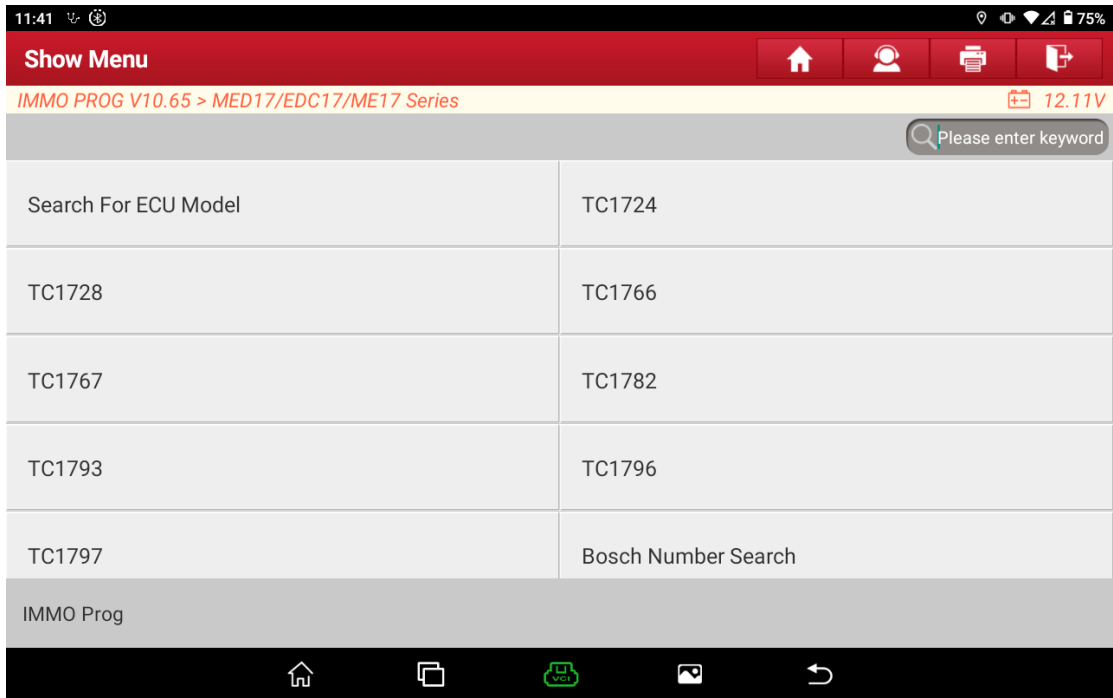
3. Choose the [Engine] module.



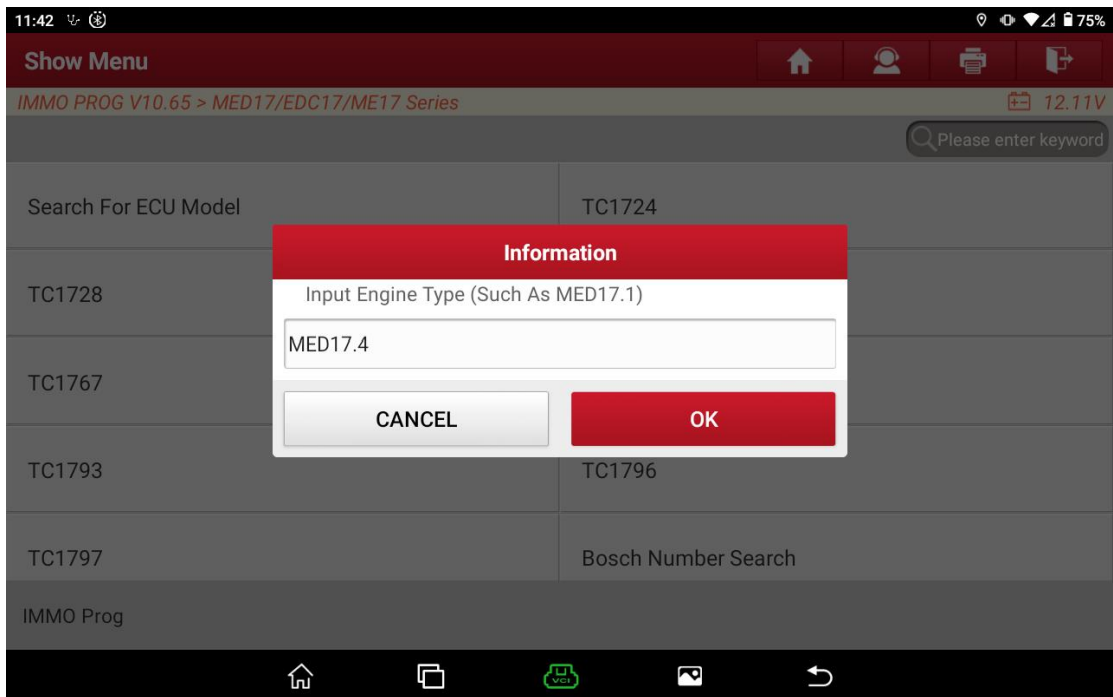
4. Choose the corresponding menu according to the engine manufacturer and type. Take MED17.4 as an example here: choose the [MED17/EDC17/ME17 Series] menu.



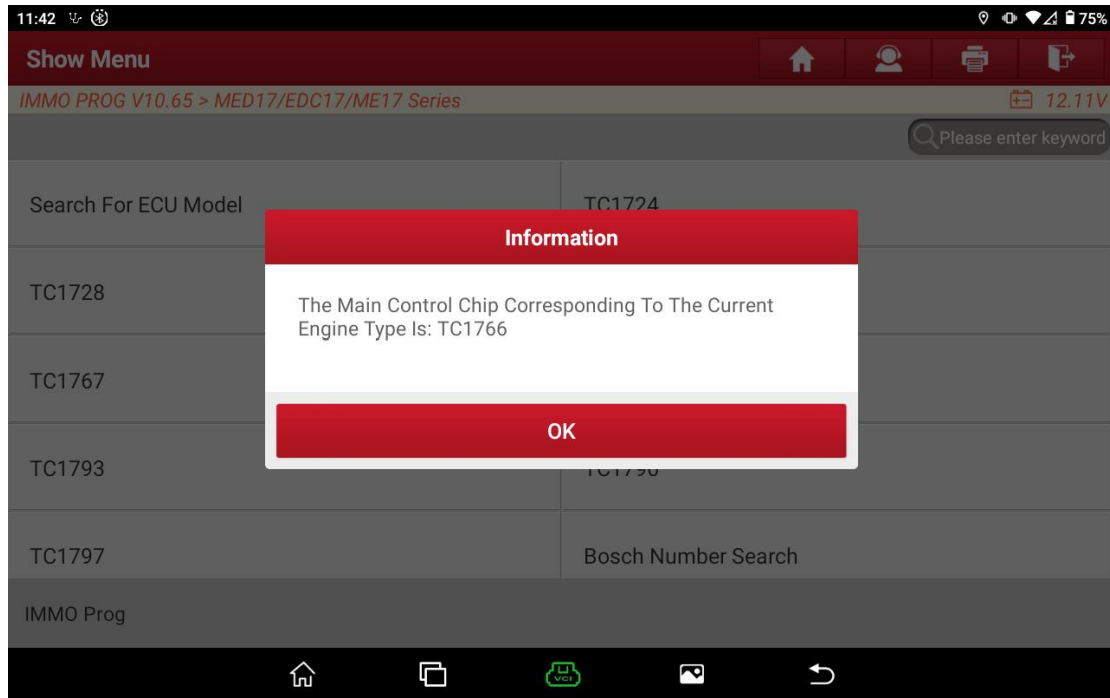
5. Choose [Search For ECU Model].



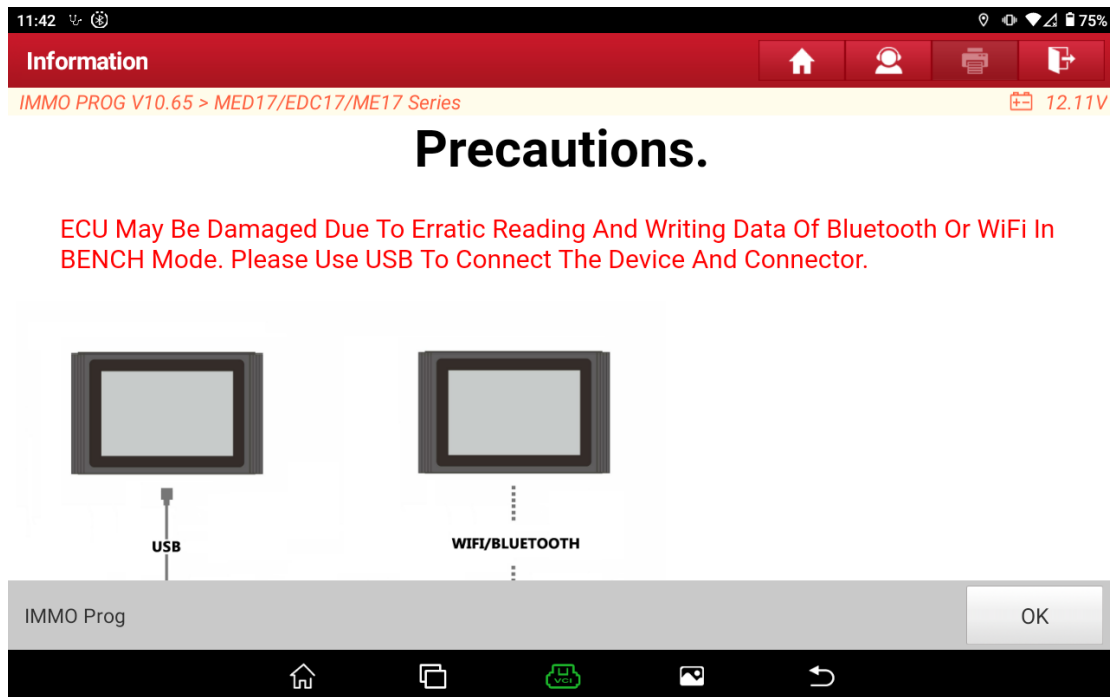
6. Enter the ECU type name of the engine, as shown in the figure, enter MED17.4, and click OK. Then, the type will be recognized automatically.



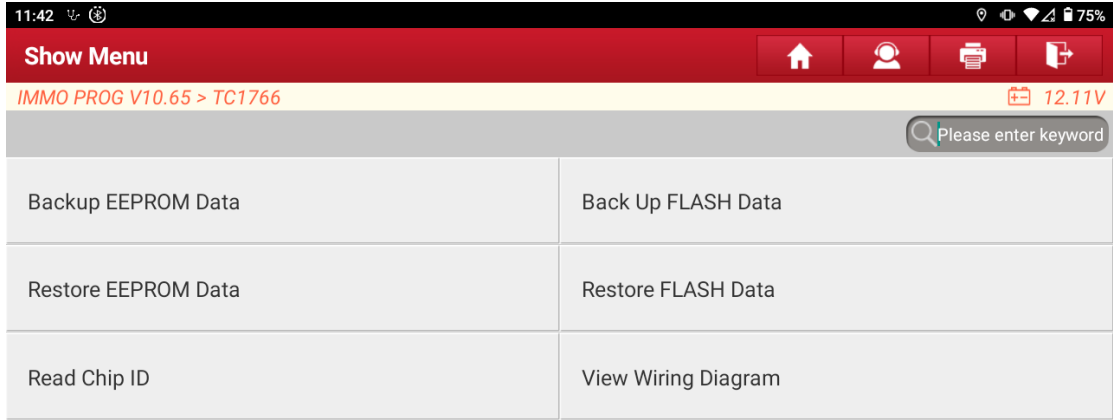
7. The type TC1766 is recognized. Click OK.



8. Precautions are shown in the figure below. Click OK.



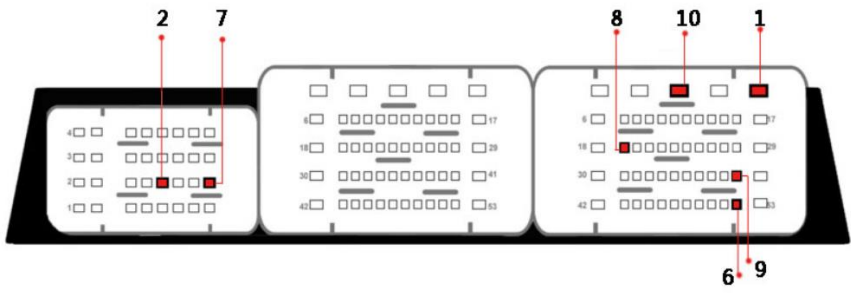
9. Choose [View Wiring Diagram] to obtain the wiring diagram.



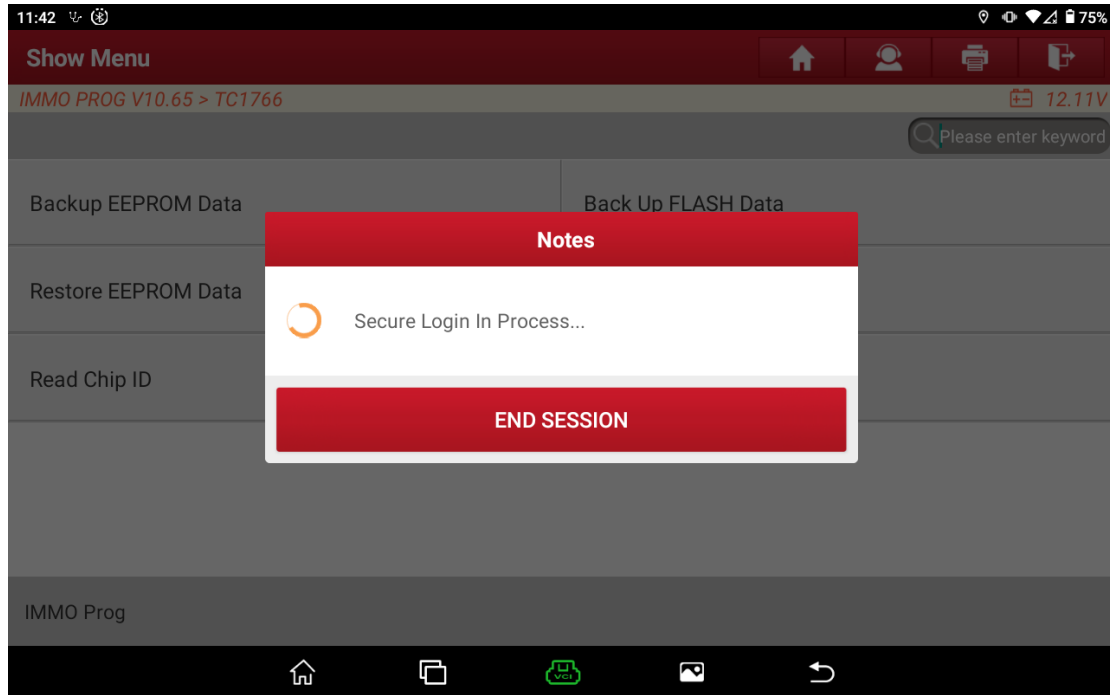
10. Connect the ECU according to the wiring diagram.



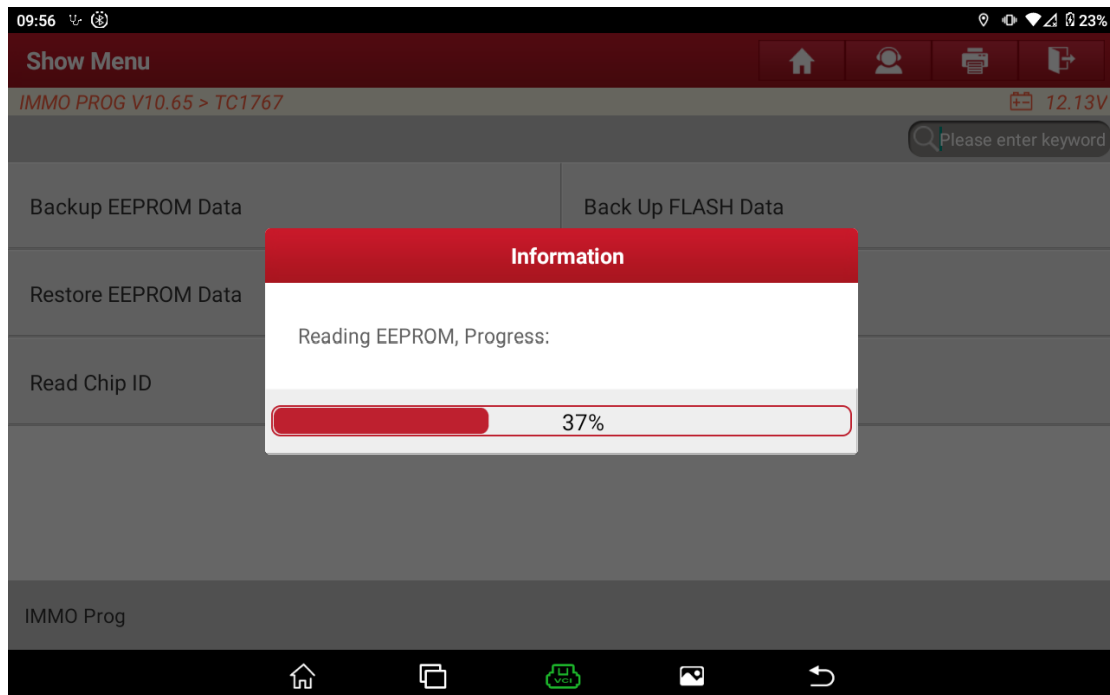
Please Connect ECU To The Diagnostic Connector According To The Picture And Power The Device On



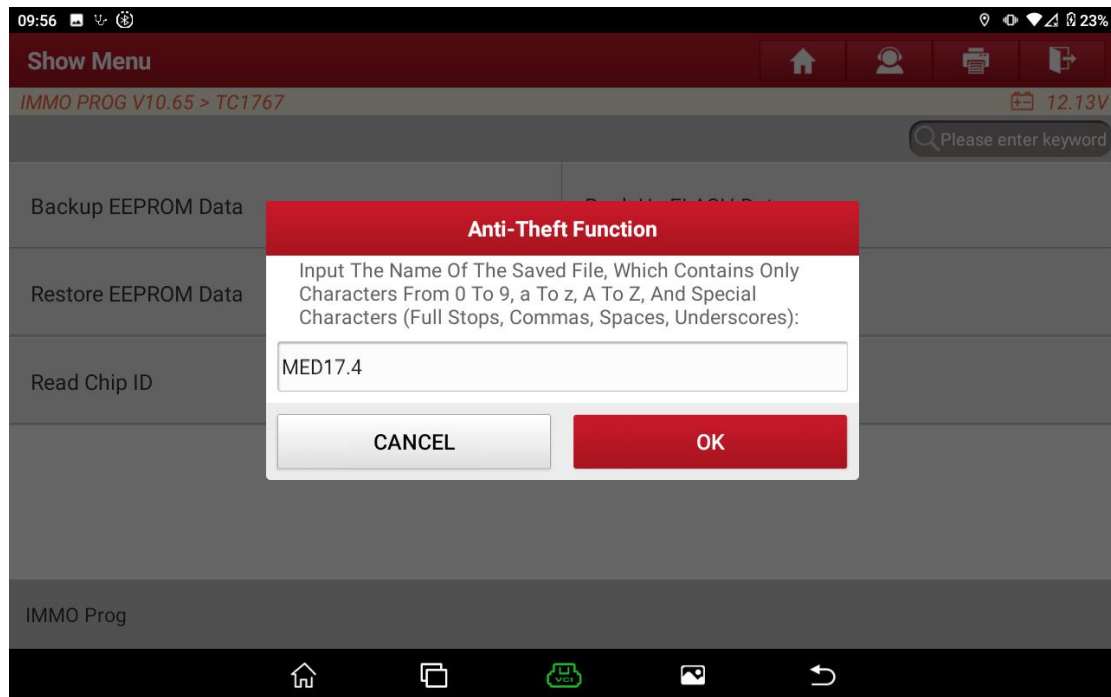
11. After connecting the ECU, choose [Backup EEPROM Data] to execute the function and start to read and save EEPROM data.



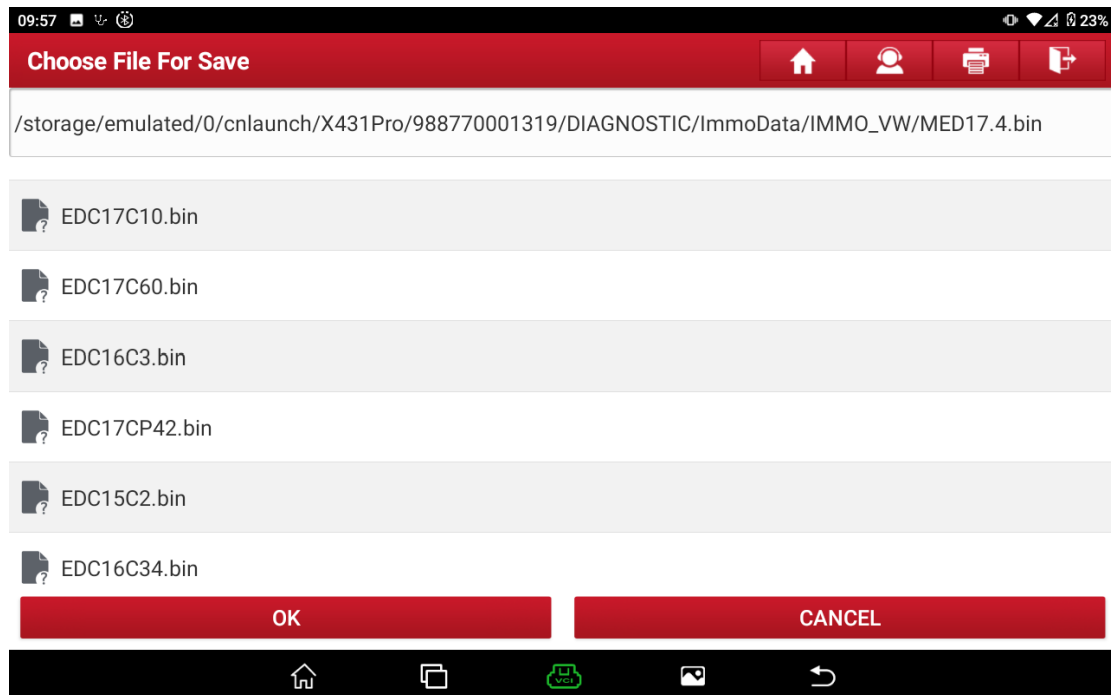
12. Wait for the completion of EEPROM data reading.



13. After EEPROM data reading is completed, enter the file name to be saved.

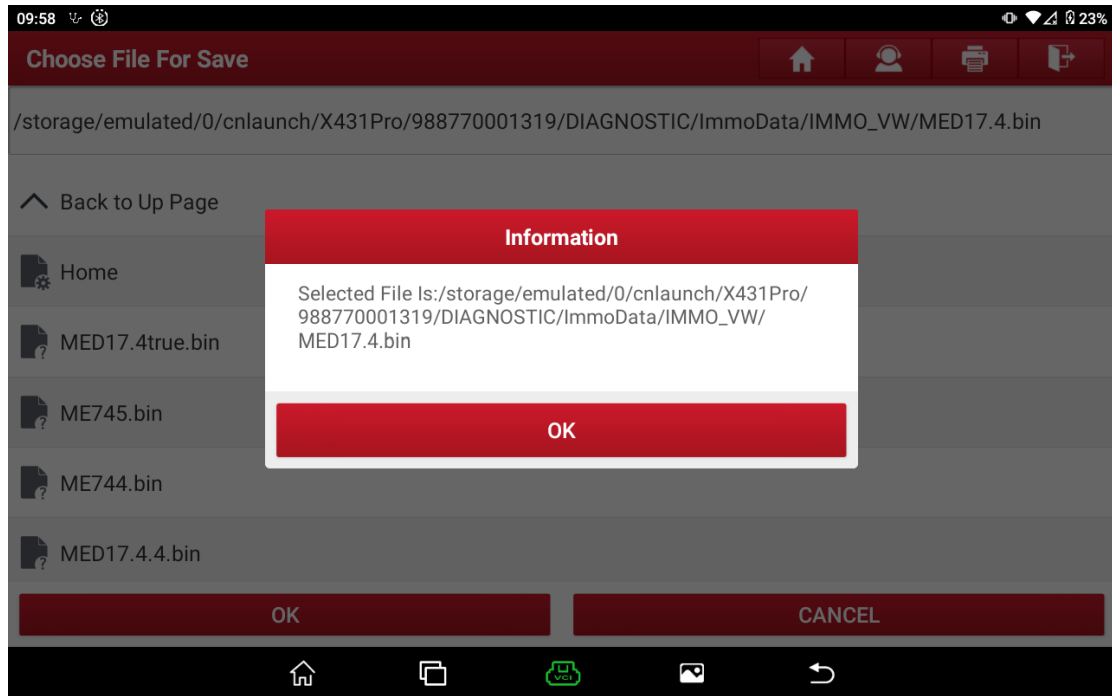


14. Choose the save path of the file and click OK.

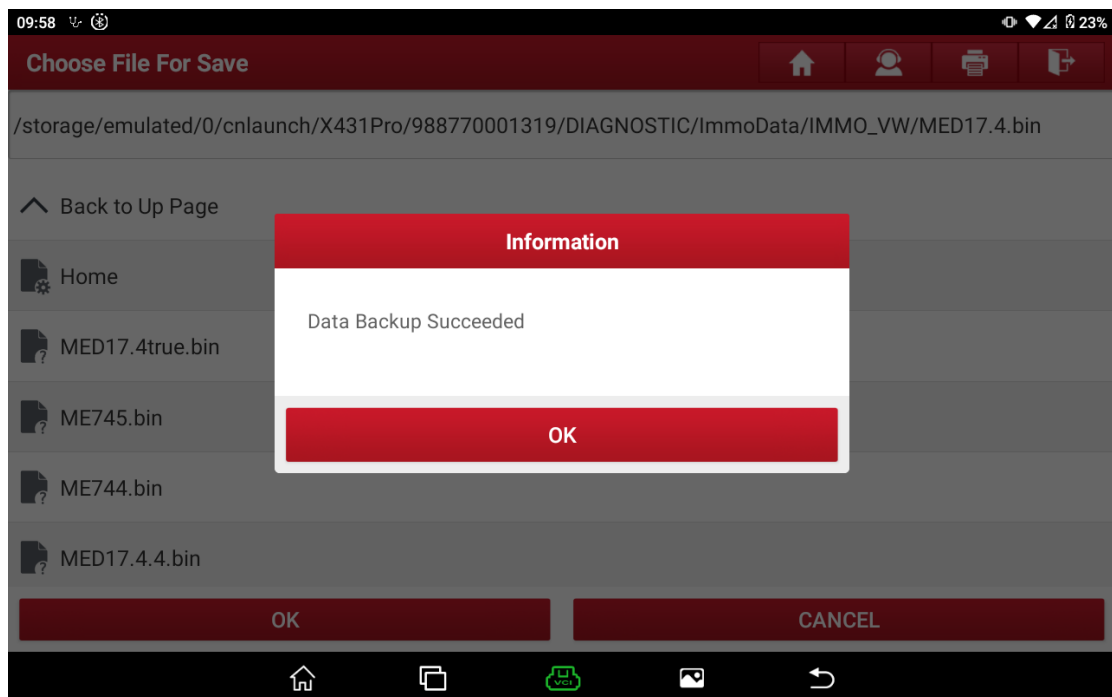


15. Confirm the save path of the file, and click OK after confirmation.

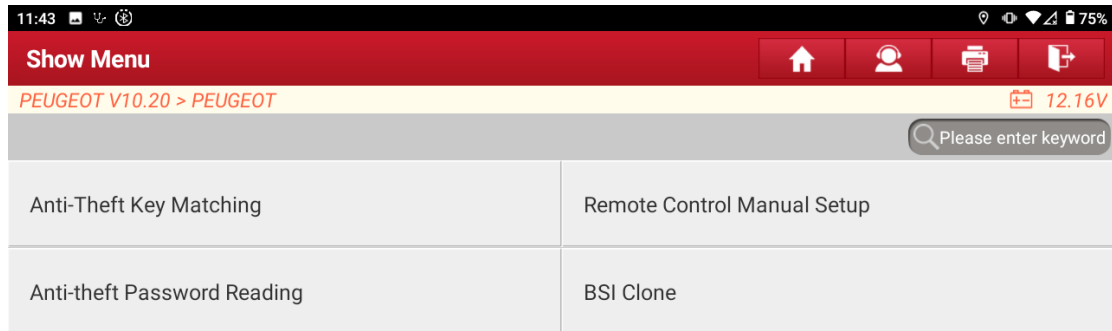




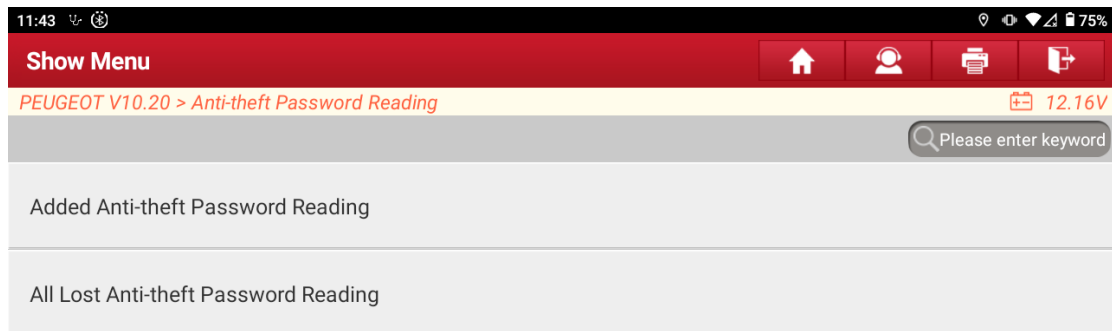
16. File backup is successful.



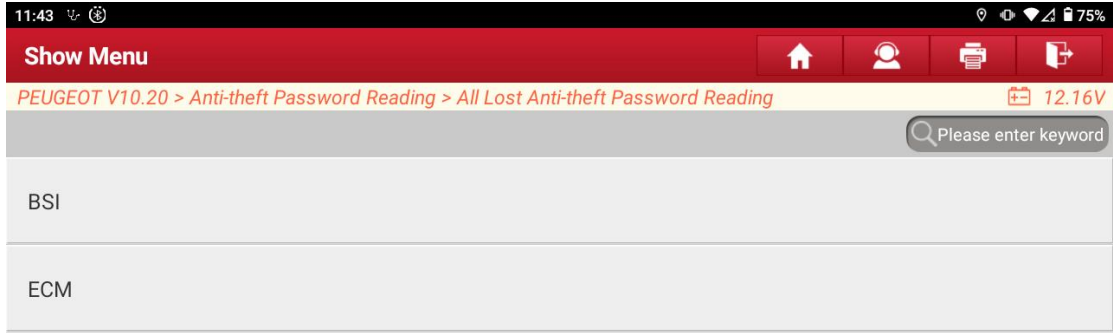
17. Click the Peugeot and Citroen logo to enter the software as shown in the figure below, and choose [Anti shift Password Reading].



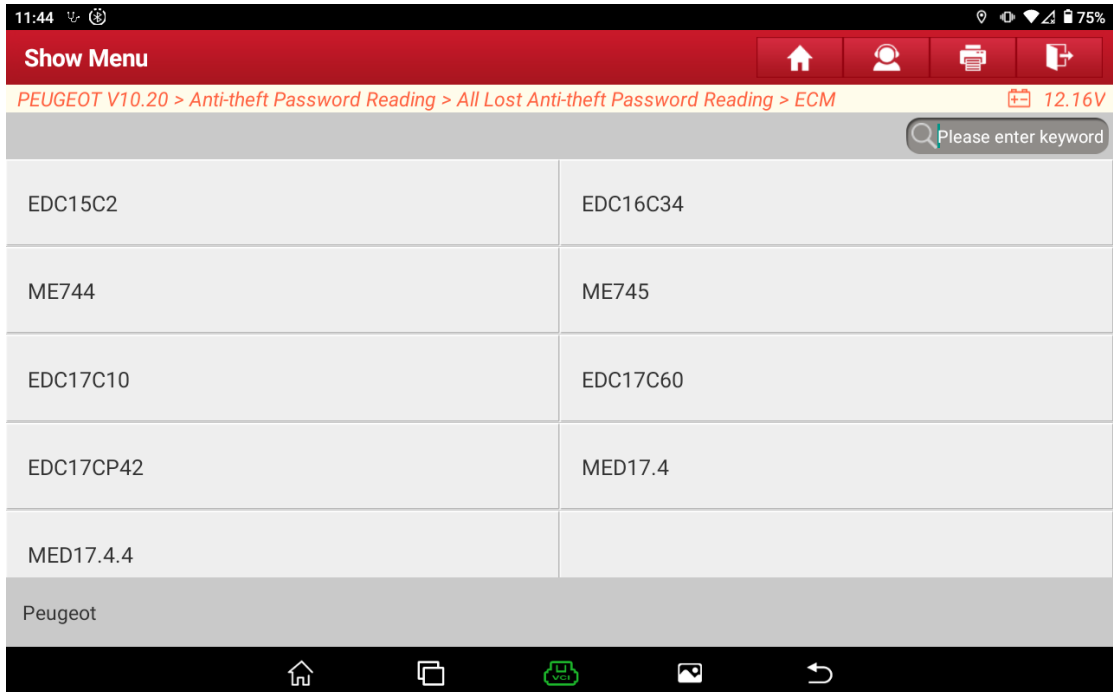
18. Choose [All Lost Anti-theft Password Reading].



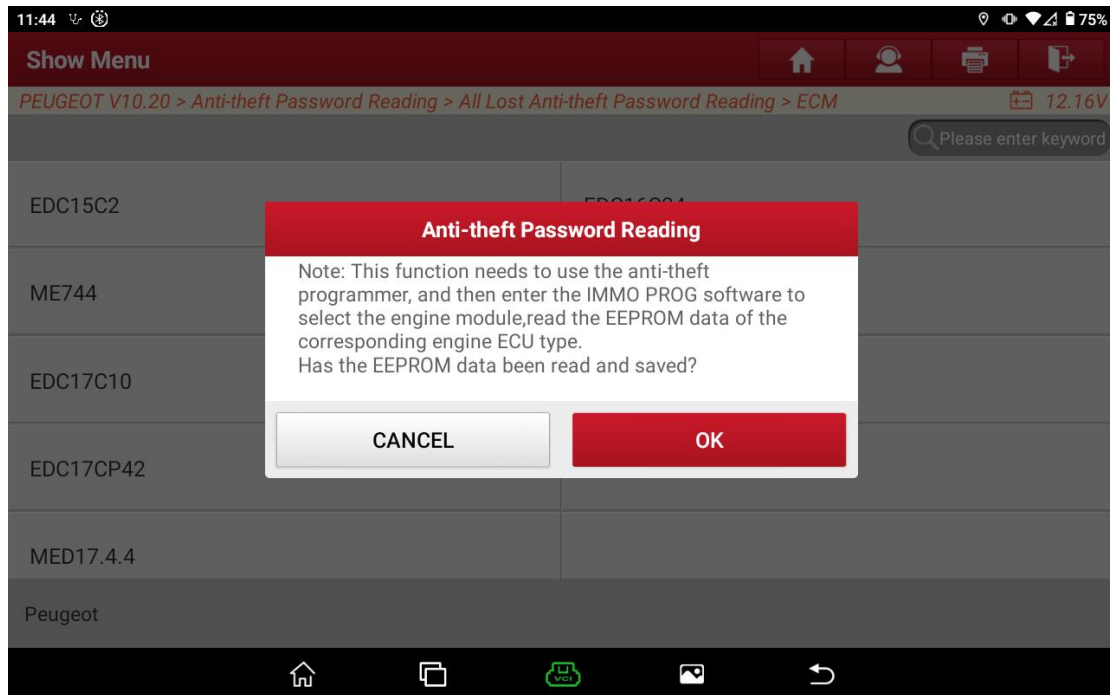
19. Choose [ECM].



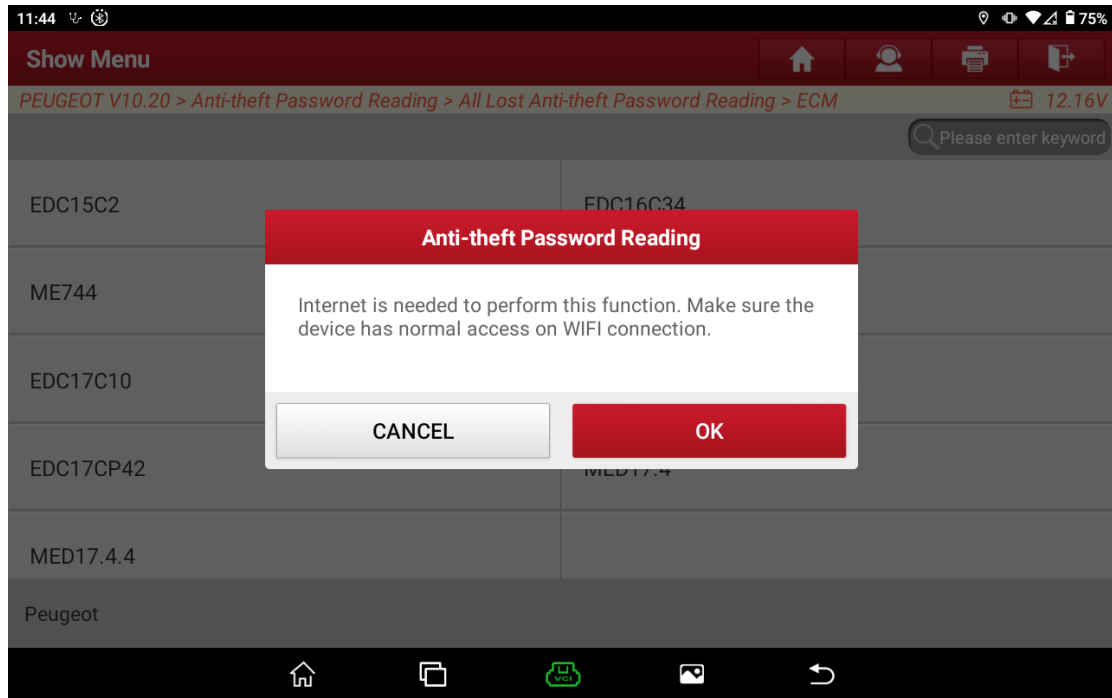
20. Choose the ECM type to be read, and take MED17.4 as an example to demonstrate.



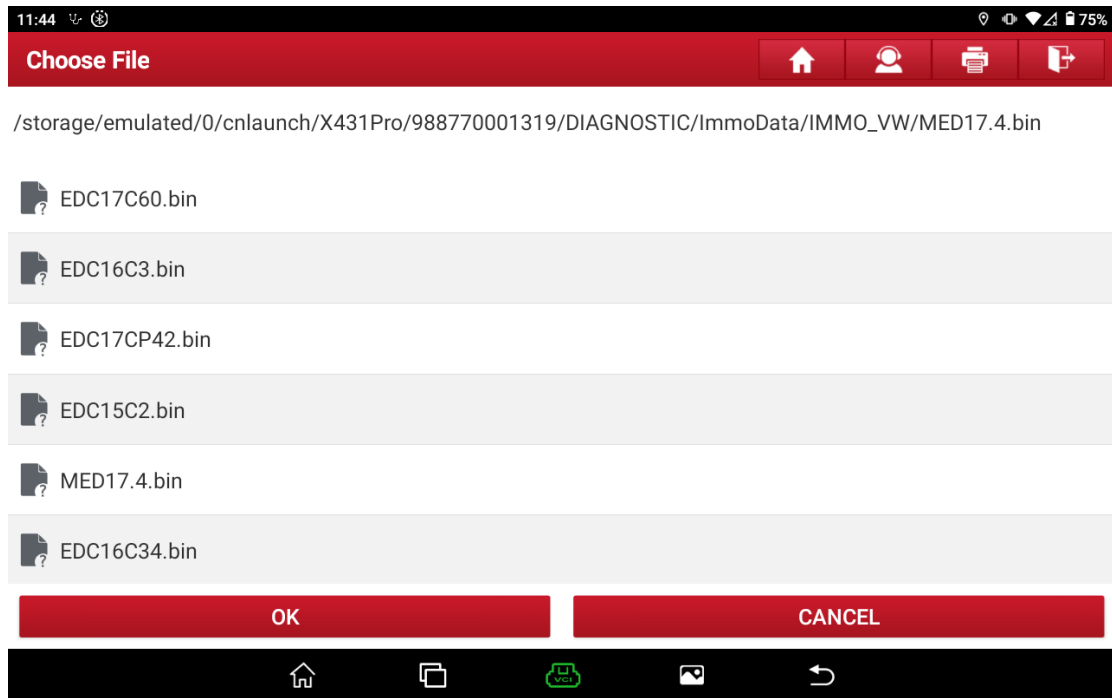
21. After you choose the type, the following prompt box will pop up. If the EEPROM data of MED17.4 has been read and saved, click OK to continue. If the EEPROM data has not been read and saved, go to step 1 to enter the programmer to read and save EEPROM data of the corresponding type.



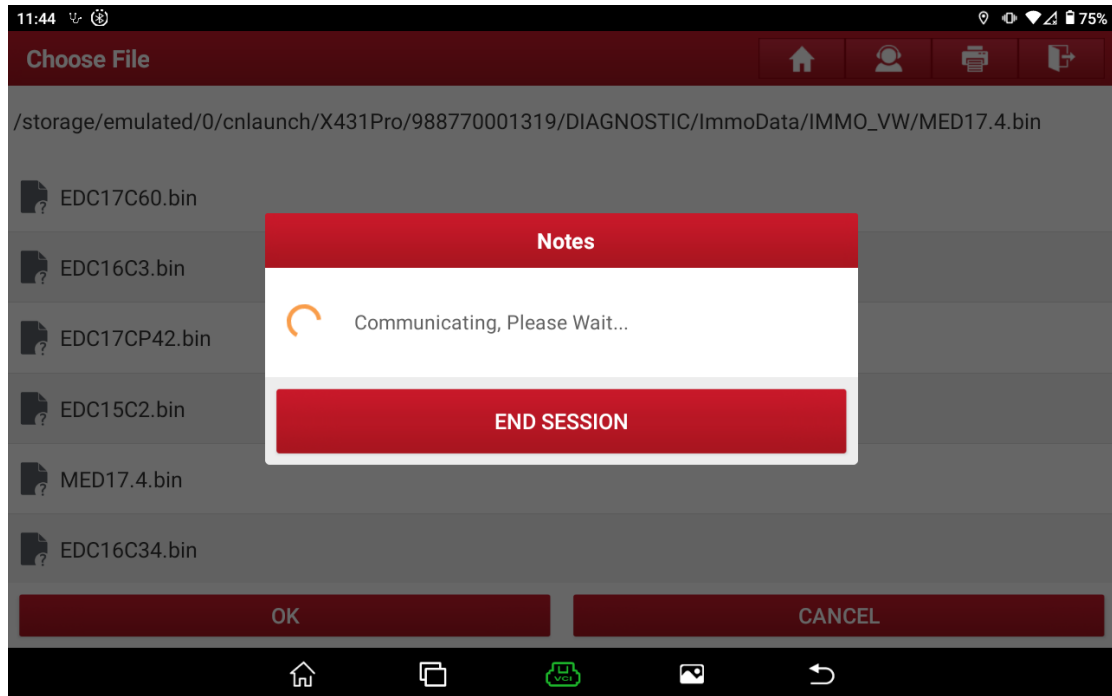
22. To perform this function, you need to connect to the network to ensure that the device network is smooth. Click OK to continue.



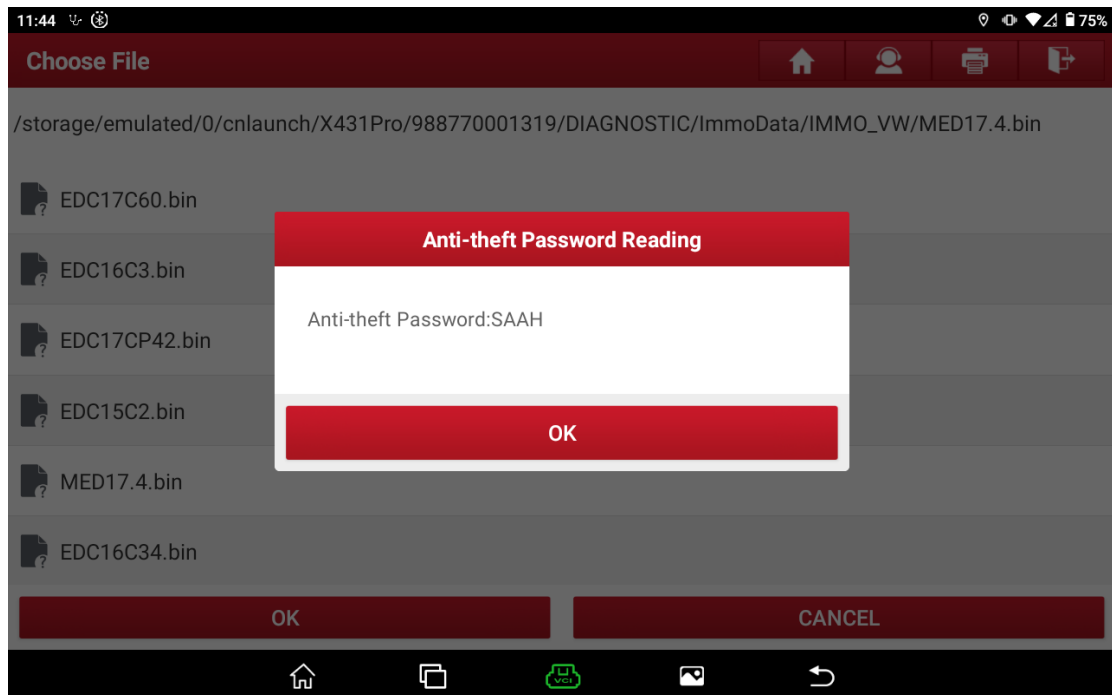
23. Choose the saved EEPROM data and click OK. Here choose MED17.4.



24. Password reading is in progress.



25. Password reading is successful.



### Statement:

The content of this document belongs to Shenzhen Launch . All rights reserved. Any individual or unit shall not quote or reprint without consent.