

Audi MQB Gearbox Replacement Guide

Description:

Here we take DQ200-MQB Gearbox as an example, replace its ECU and finish the settings.

Tools Requirement:

X-431 Pad V and X-431 G3

Software Requirement:

Audi V28.70 and above, IMMO PROGRAM V10.02 and above.

A Brief Introduction:

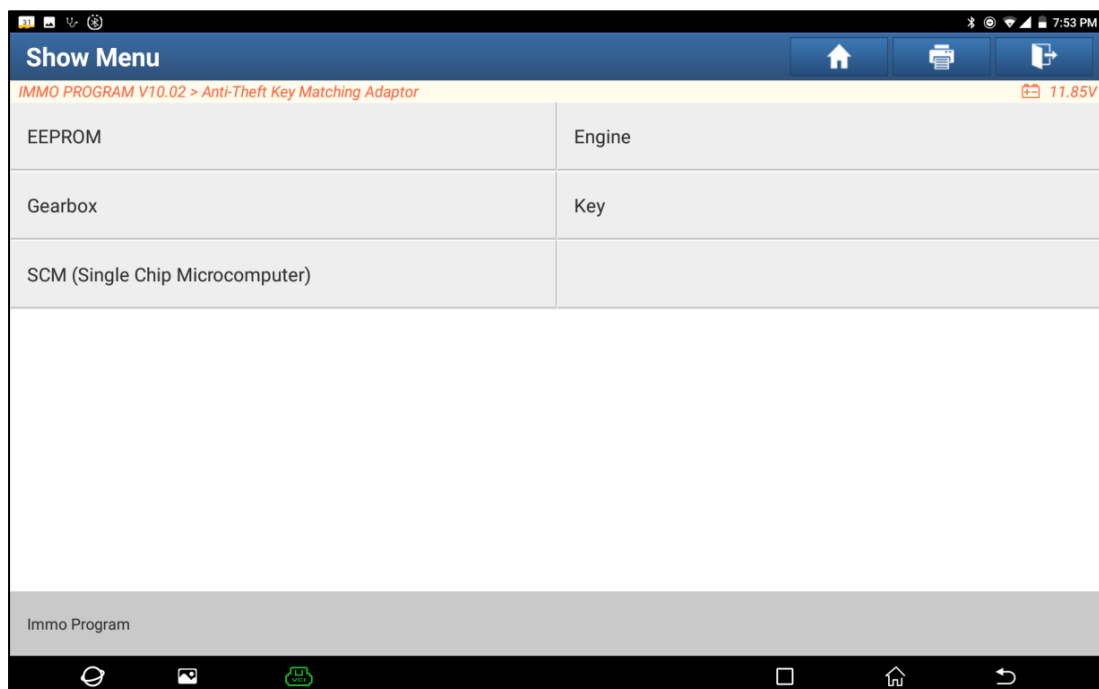
There are two kinds of gearbox ECU replacements, and the customer can choose one of them according to the actual situation.

- The data of the customer's original vehicle gearbox ECU is readable. Data is not damaged, and the gearbox can be cloned. In this situation, we just need to back up the original gearbox EEPROM and FLASH, and then restore them into the gearbox ECU for replacement.
- The data of the customer's original vehicle gearbox ECU is unreadable or the data is damaged. In this situation, we need to back up the EEPROM of the ECU for replacement, and then manually input the original CS code or get the original CS code from the original key.

Operation Steps:

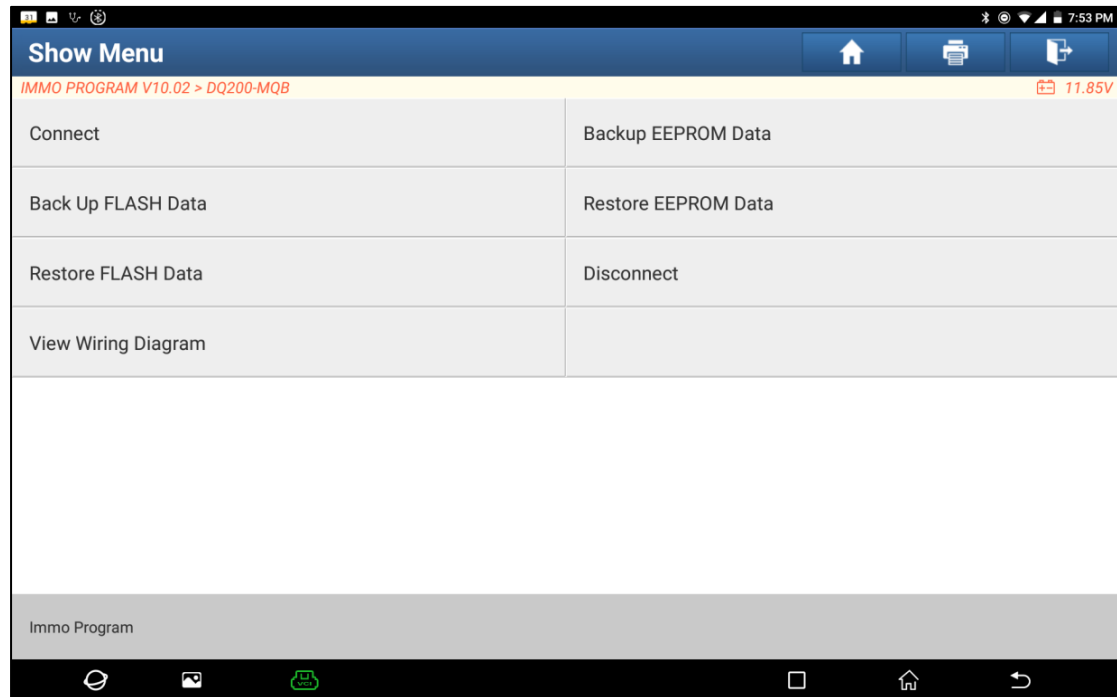
Situation 1: the customer's original vehicle gearbox data is readable and the data is not damaged, the gearbox can be cloned.

1. Enter [Service Function], find [IMMO PROGRAM], then [Anti-Theft Key Matching Adaptor].

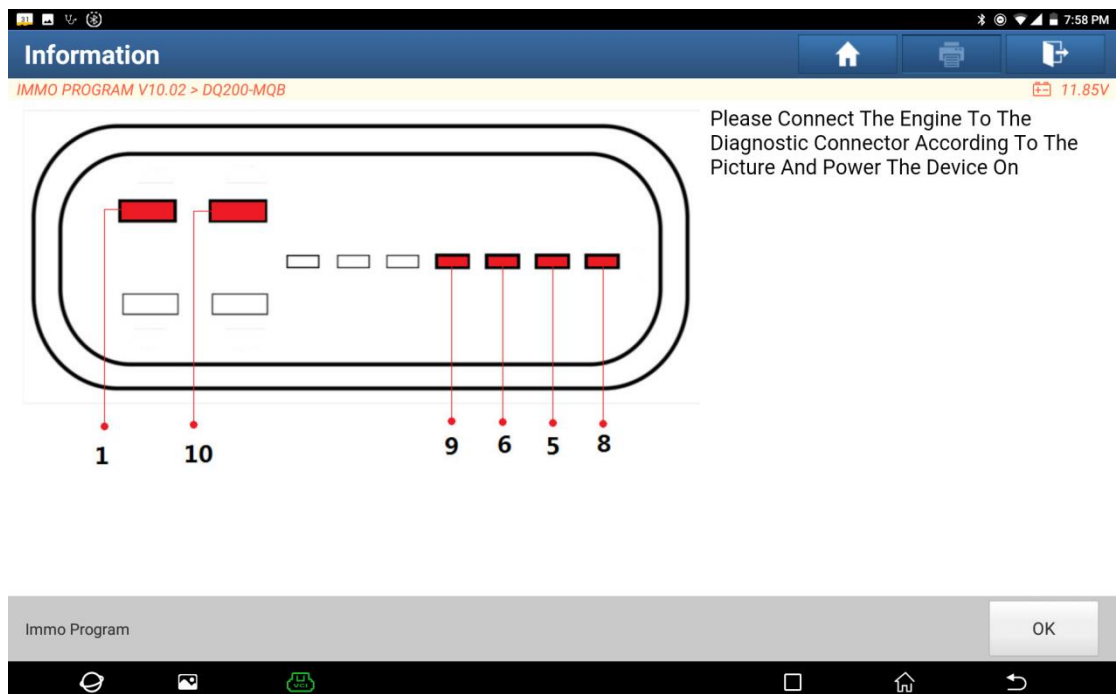


LAUNCH

2. Select [Gearbox], and then select Gearbox type according to the specific model, here we choose [DQ200-MQB] to enter the function menu. As shown in the below figure:



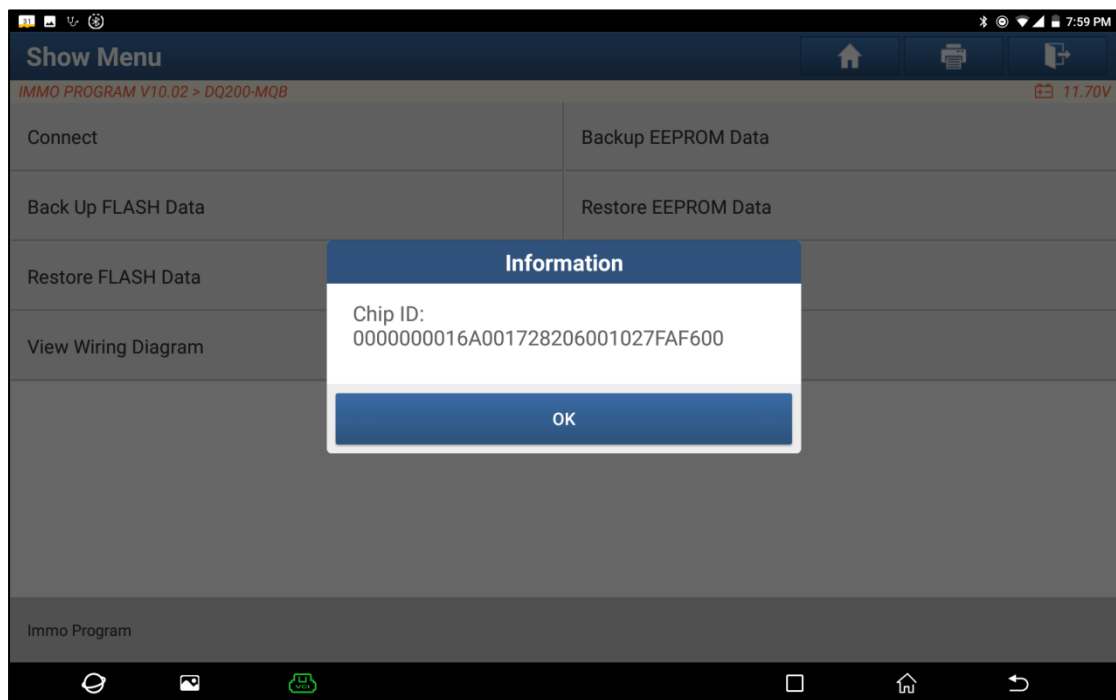
3. Click [View Writing Diagram], follow the connection diagram to connect the original car gearbox ECU with the anti-theft programmer(X-431 PROG3) and diagnostic equipment, click [OK], the connection diagram and physical diagram are as shown in the following figure:



LAUNCH

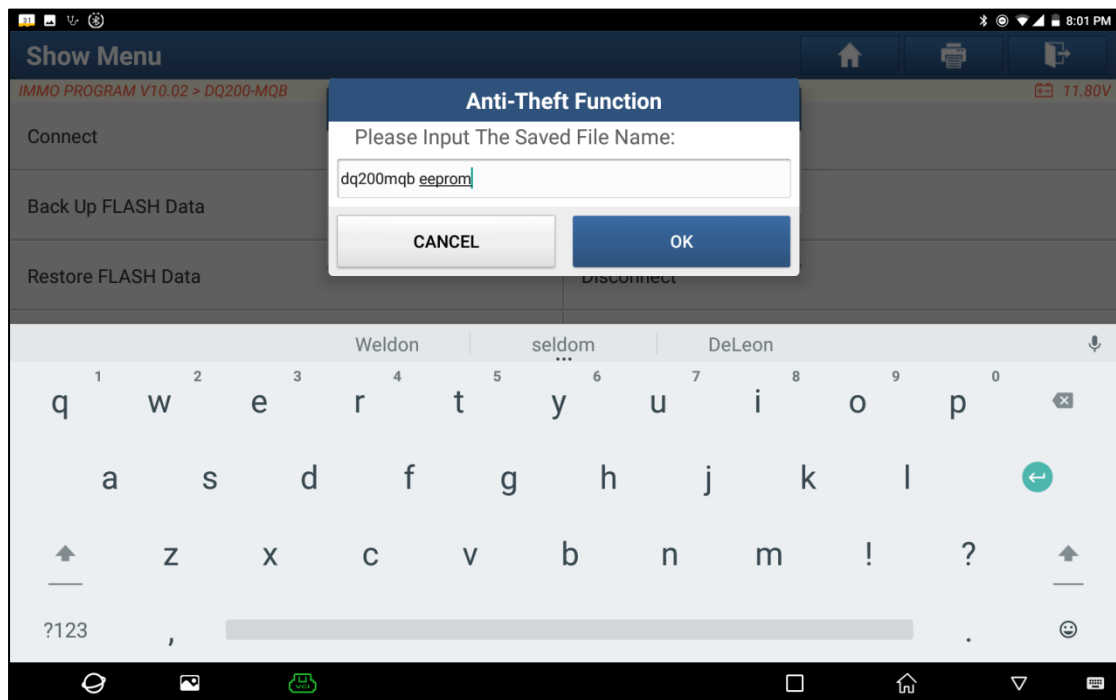
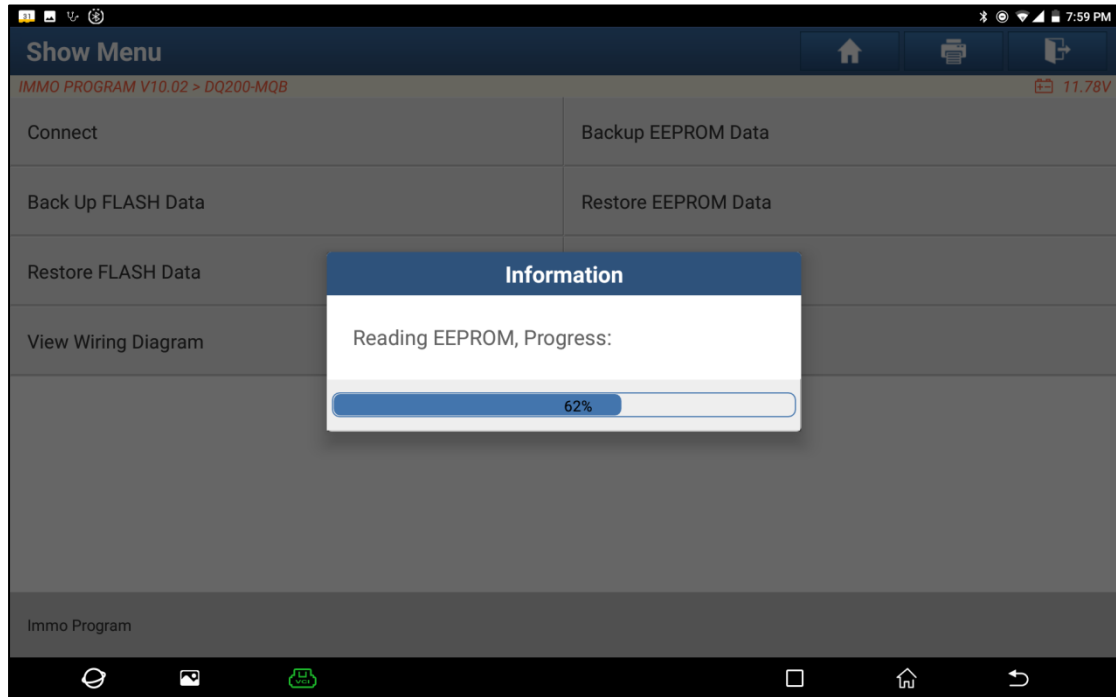


4. Click [Connect], click [OK] after reading the chip ID of the original car gearbox, as shown in the figure:

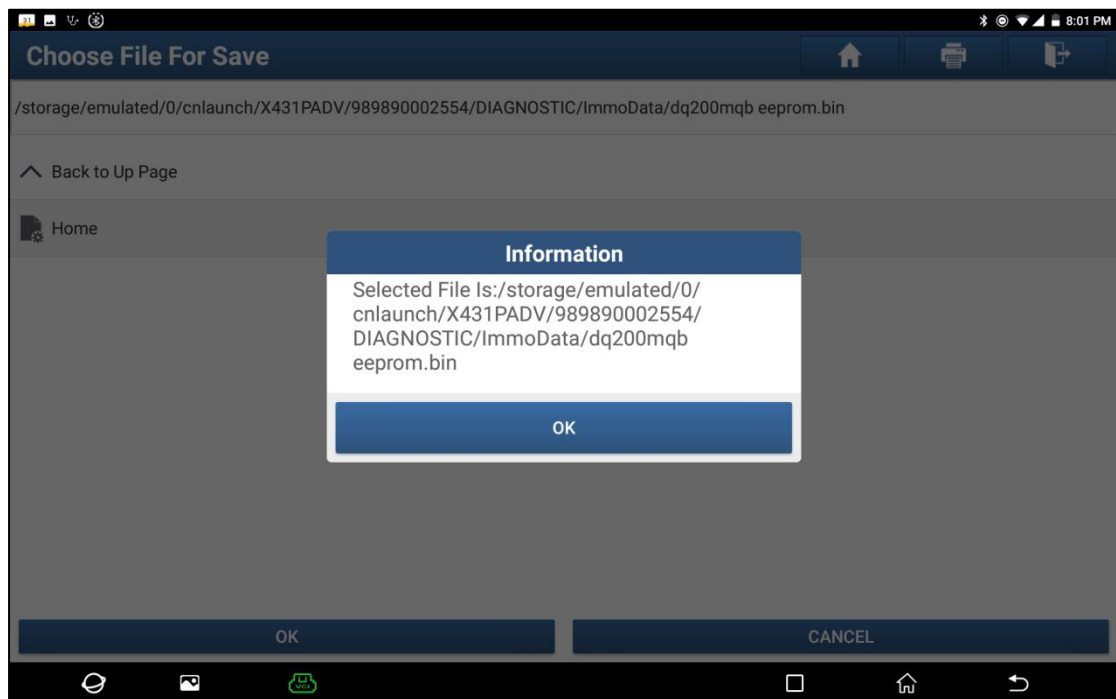


LAUNCH

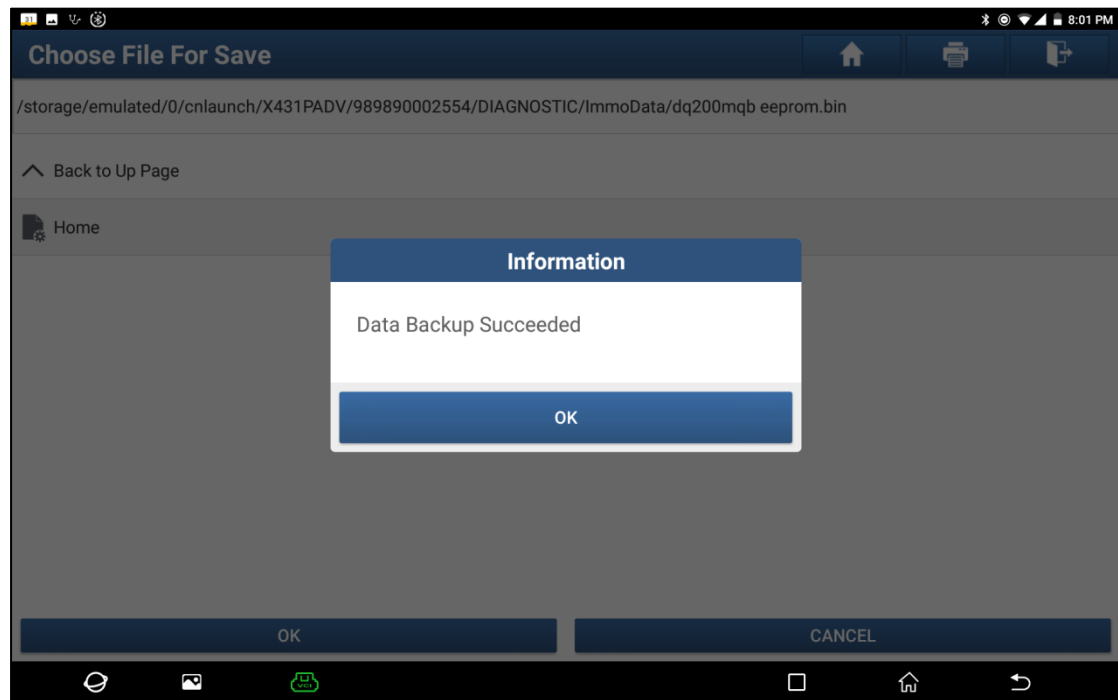
- Click [Backup EEPROM Data] in this menu interface, read the EEPROM data of the original car gearbox, enter the file name to be saved, click [OK], select the path where the file is to be stored, and click [OK] to save. As shown below:



LAUNCH

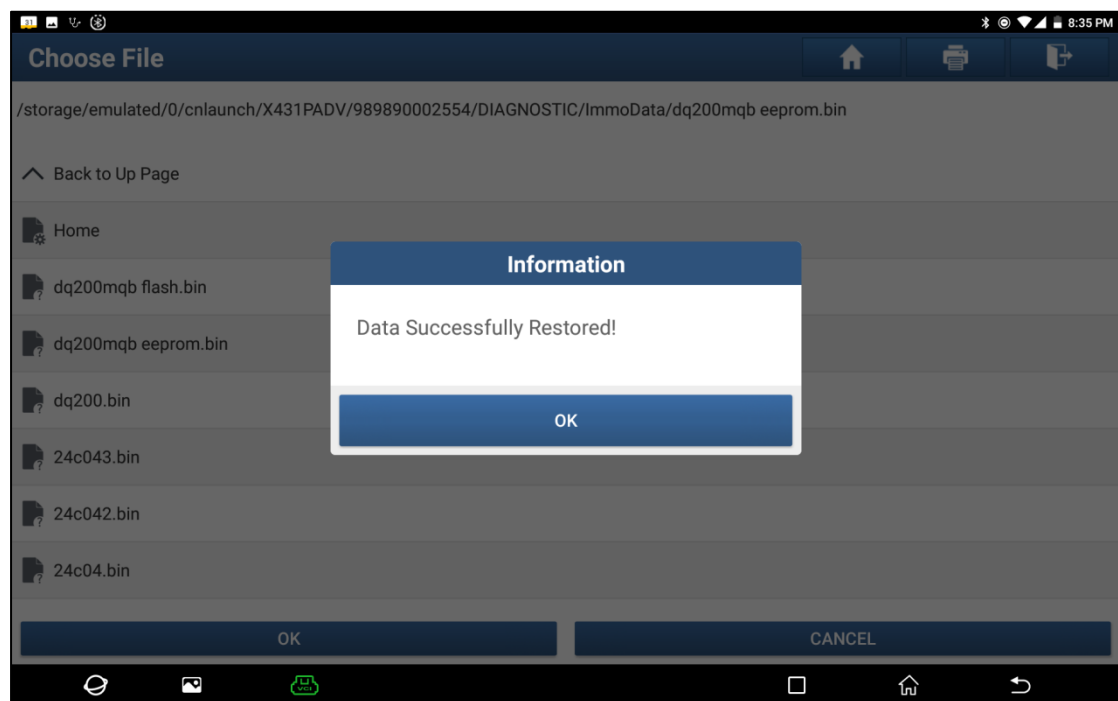


LAUNCH



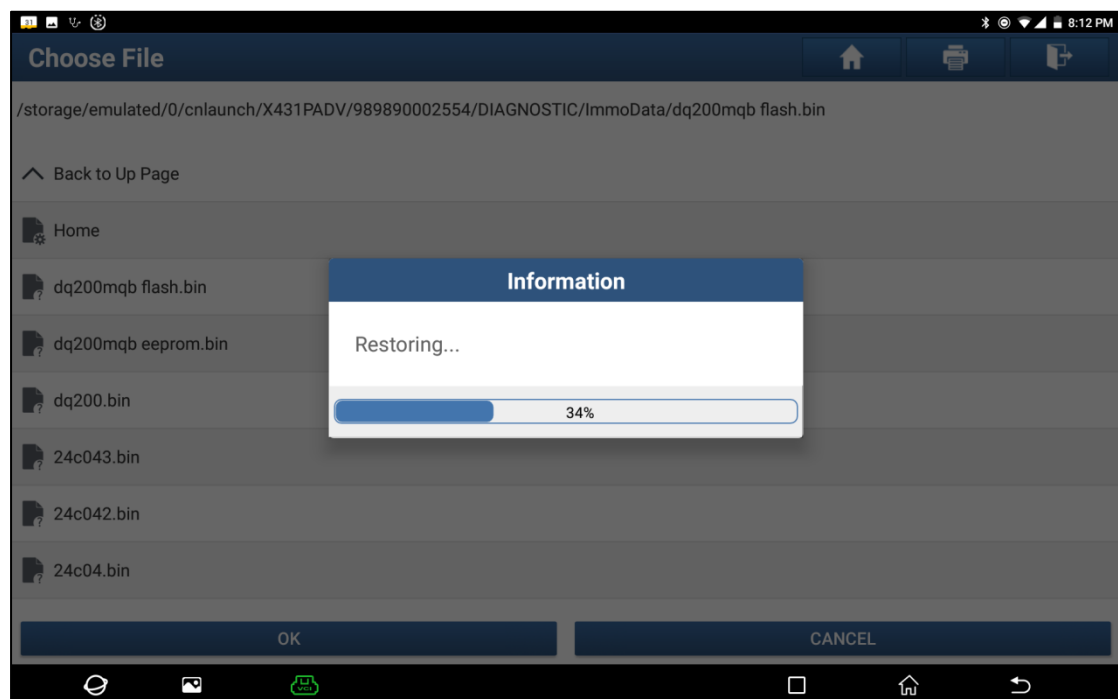
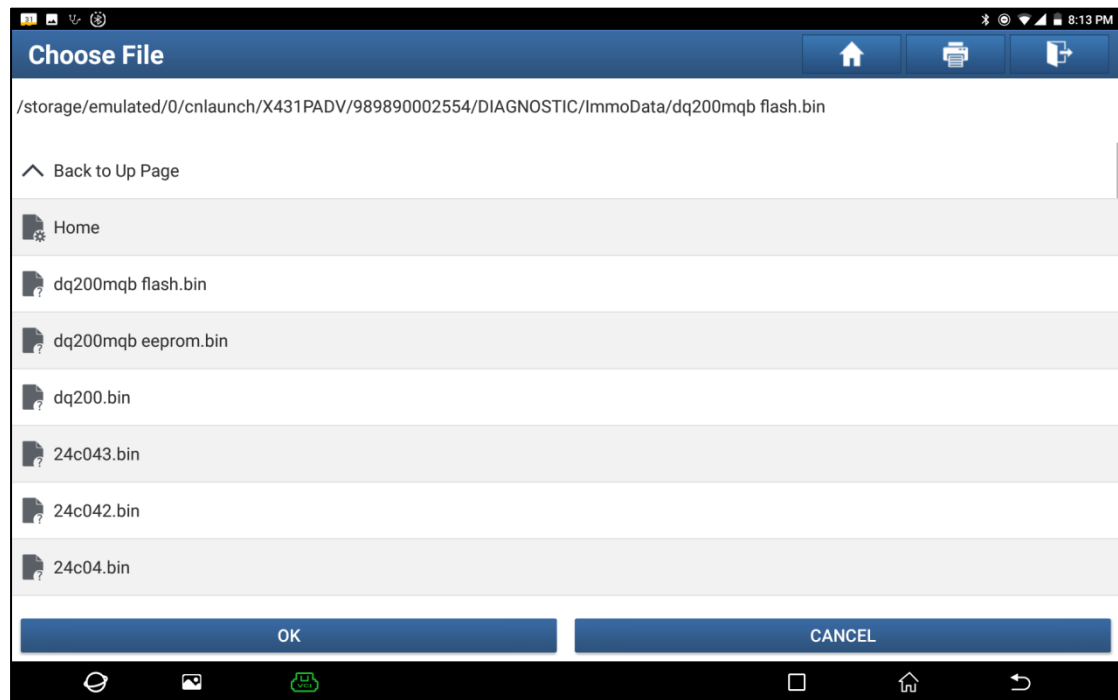
6. Click [Backup FLASH Data] to back up the FLASH data of the original vehicle gearbox, and the operation is the same as above.
7. Click [Disconnect] to disconnect the original vehicle gearbox, and then disconnect the original vehicle gearbox from the BENCH mode line.
8. Connect the gearbox ECU for replacement to the anti-theft programmer according to the steps 3 and 4.
9. After connecting the gearbox ECU for replacement, click [Restore EEPROM Data] on the function menu interface of DQ200-MQB, select the EEPROM data backed up in step 5, and click [OK] to write the EEPROM data of the original vehicle gearbox In the new gearbox, as shown in the figure:

LAUNCH

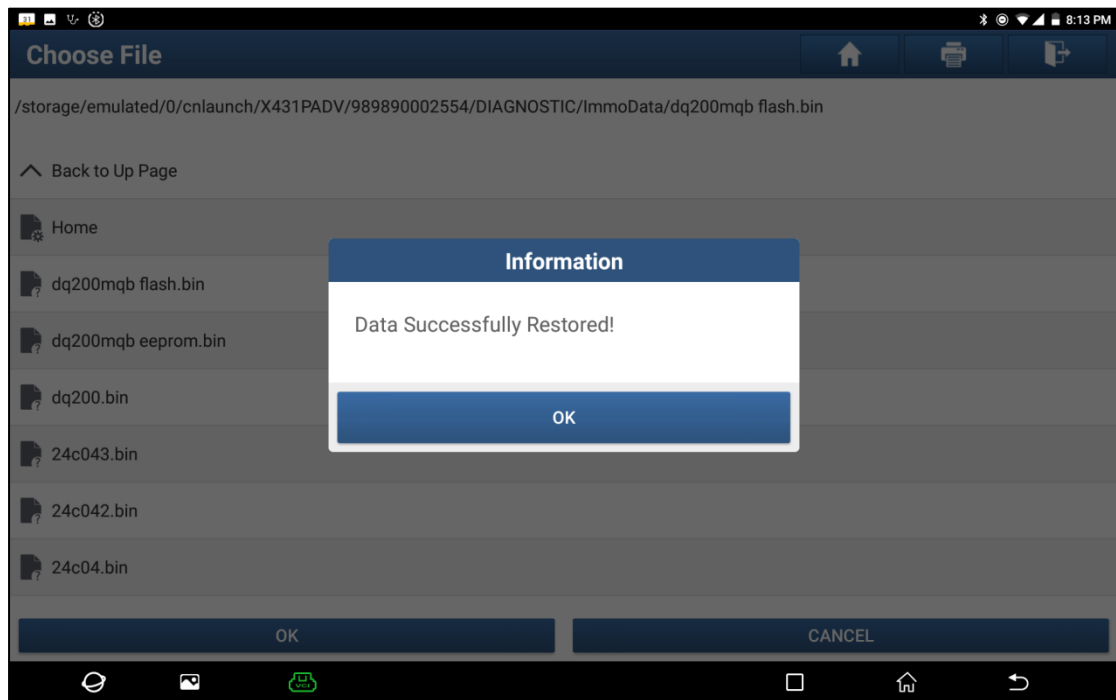


10. Click [Restore FLASH Data] to write the FLASH data of the original vehicle gearbox backed up in step 6 into the gearbox ECU for replacement. The operation steps are the same as step 9, as shown in the following figure:

LAUNCH

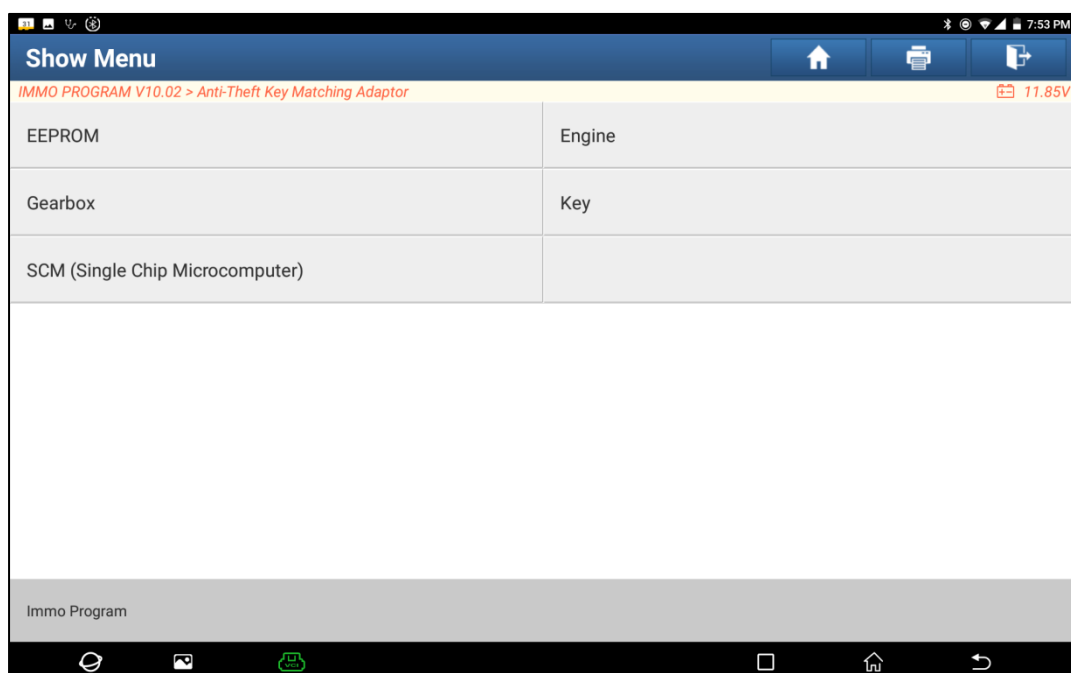


LAUNCH



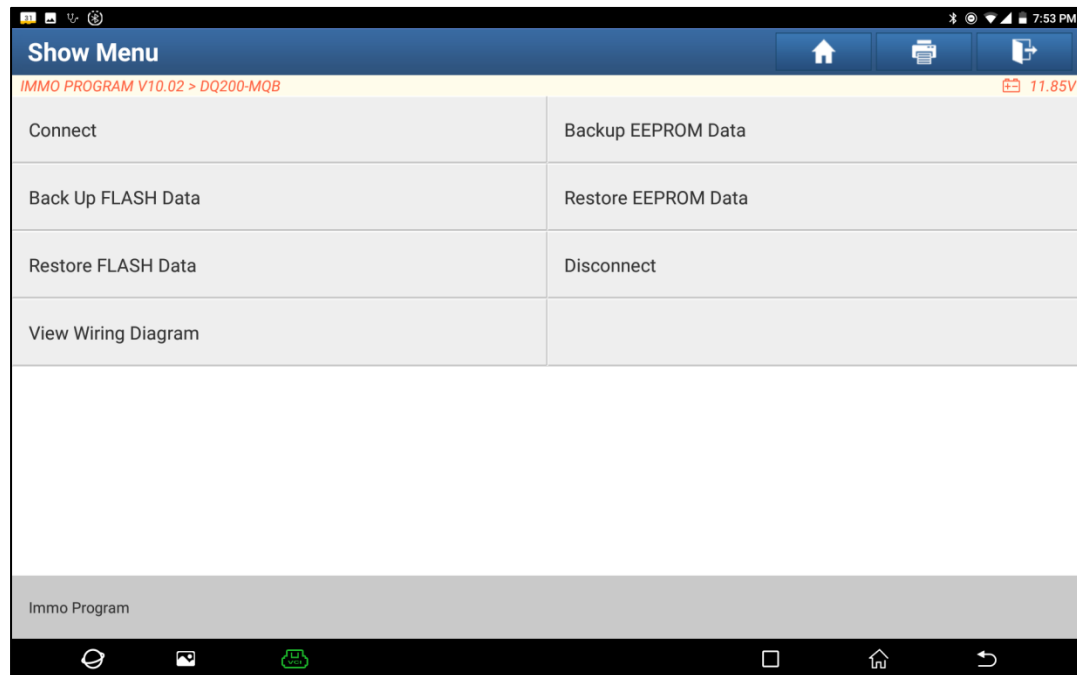
Situation 2: The data of the customer's original vehicle gearbox ECU is unreadable or the data is damaged. In this situation, we need to back up the EEPROM of the ECU for replacement (we call it new gearbox ECU here), and then manually input the original CS code or get the original CS code from the original key.

1. Enter "Service Function", find "IMMO PROGRAM", and choose [Anti-Theft Key Matching Adaptor].

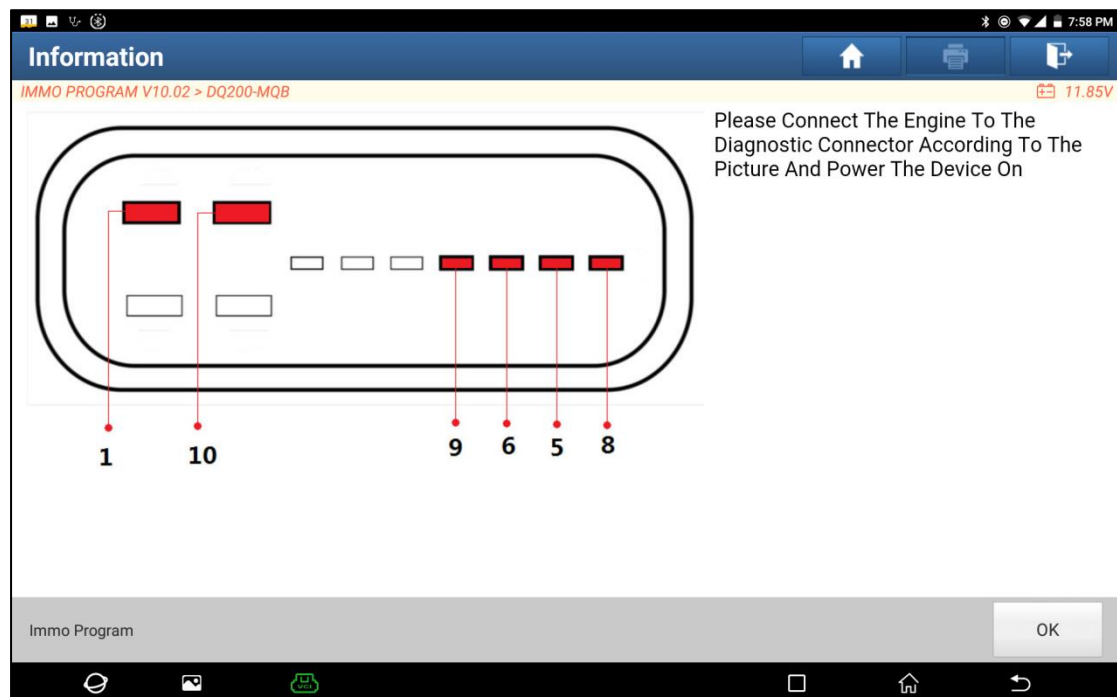


LAUNCH

2. Select [Gearbox], and then select Gearbox type according to the specific model, here we choose [DQ200-MQB] to enter the function menu. As shown in the below figure:

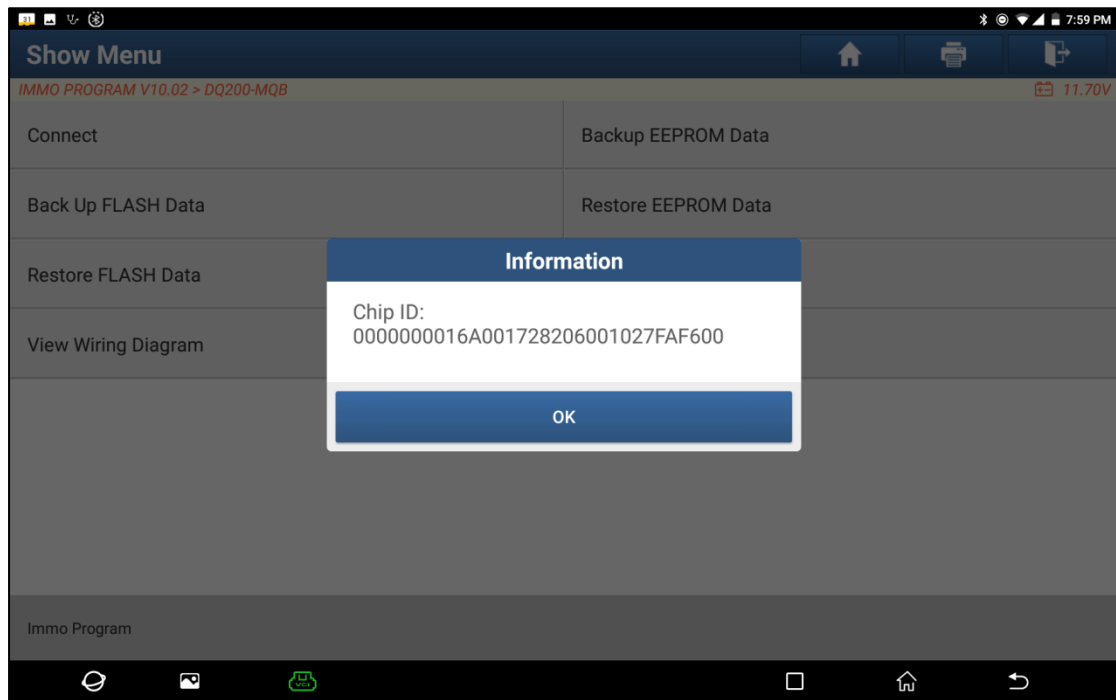


3. Click [View Writing Diagram], then connect the new gearbox ECU with X-431 PRO G3, X-431 Pad V as the below image.

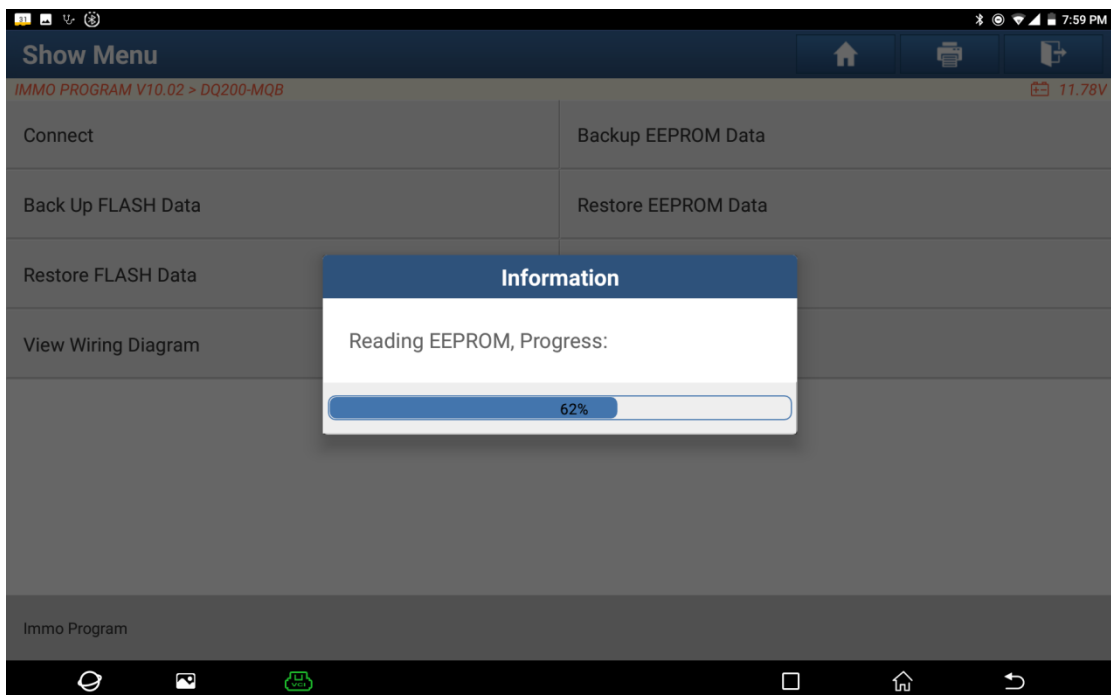


LAUNCH

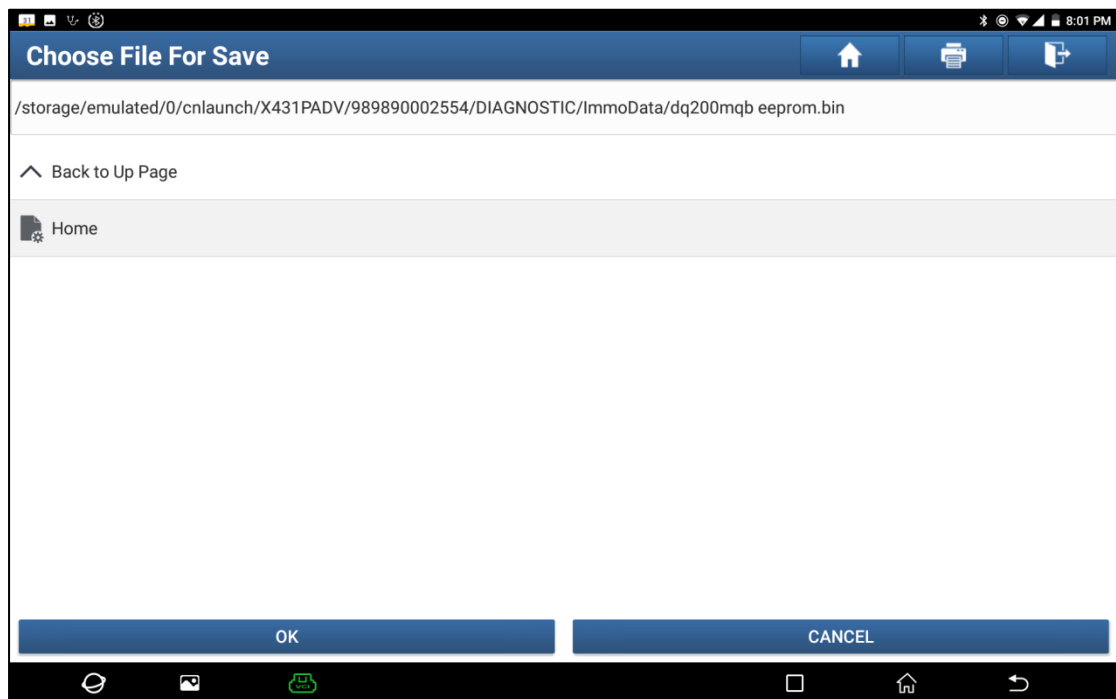
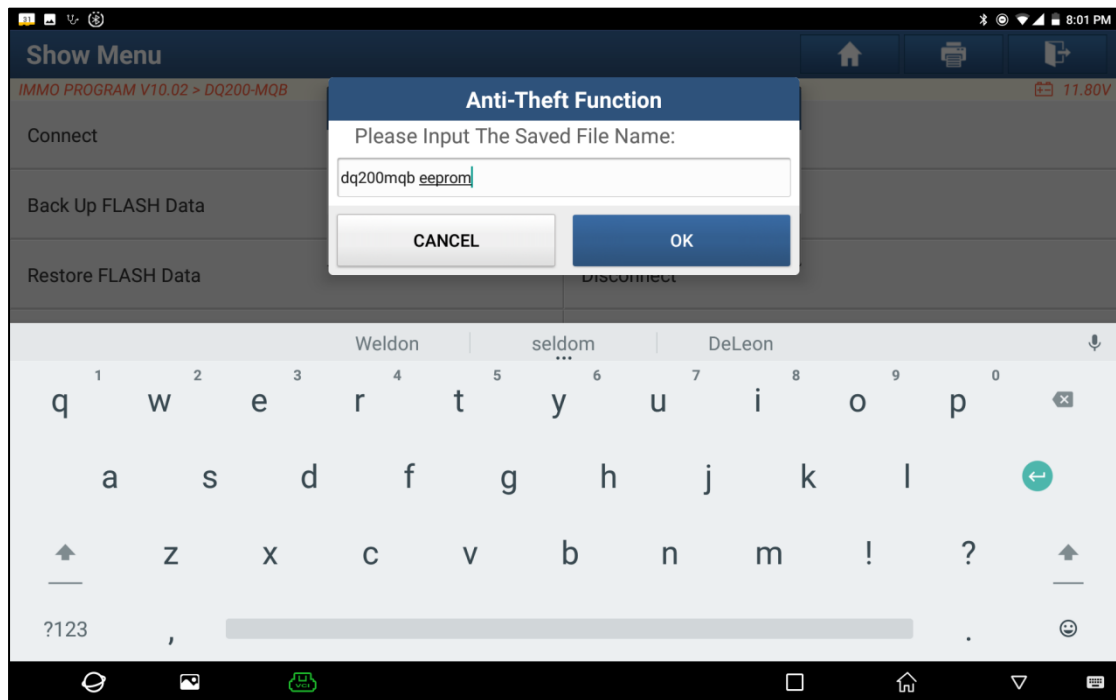
4. Then click [Connect], click [OK] after read out the ID of the new gearbox ECU chip.



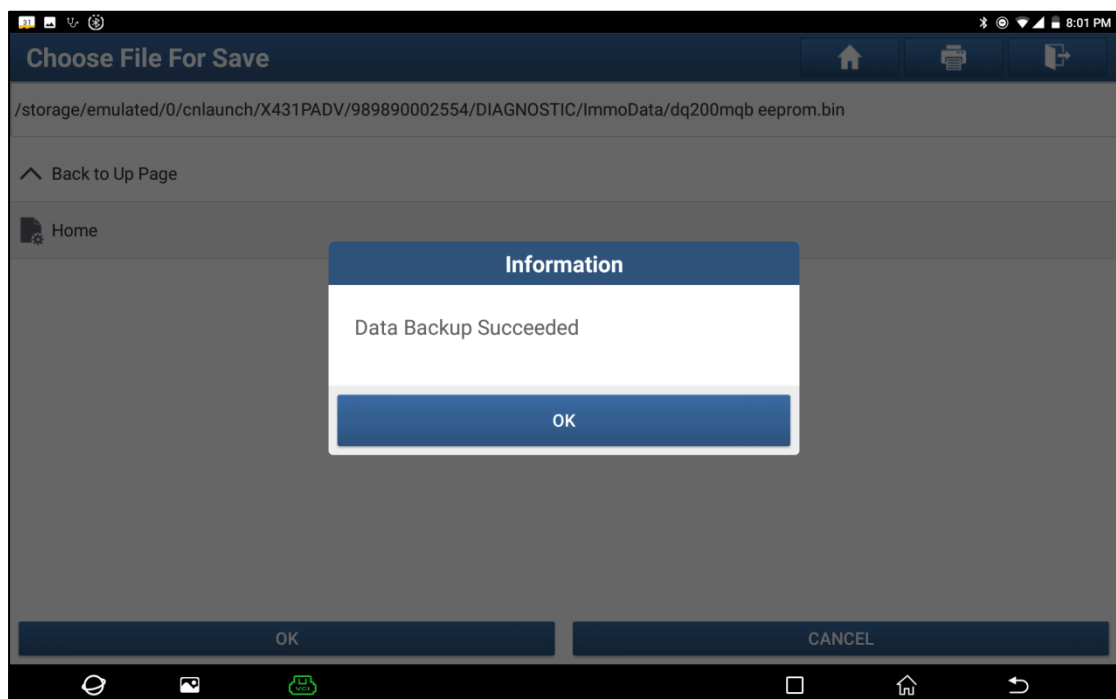
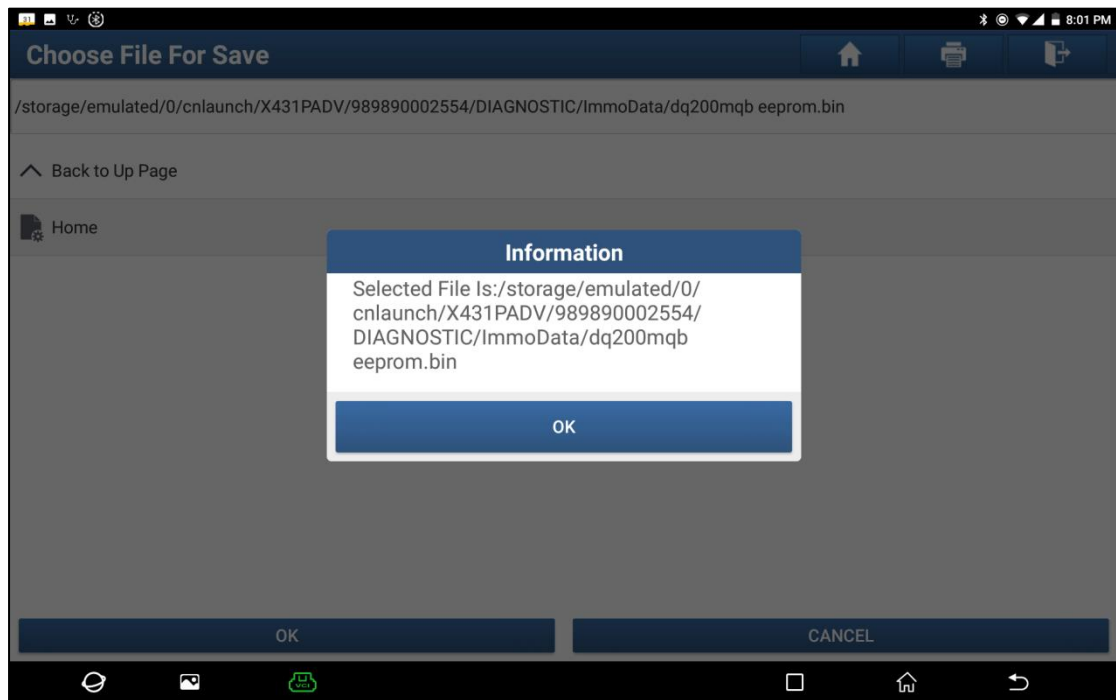
5. Click [Backup EEPROM Data] in this menu, read the EEPROM data of the new gearbox, enter the file name to be saved, click [OK], select the path where the file is to be stored, and click [OK] to save, as shown in the figure below Show:



LAUNCH

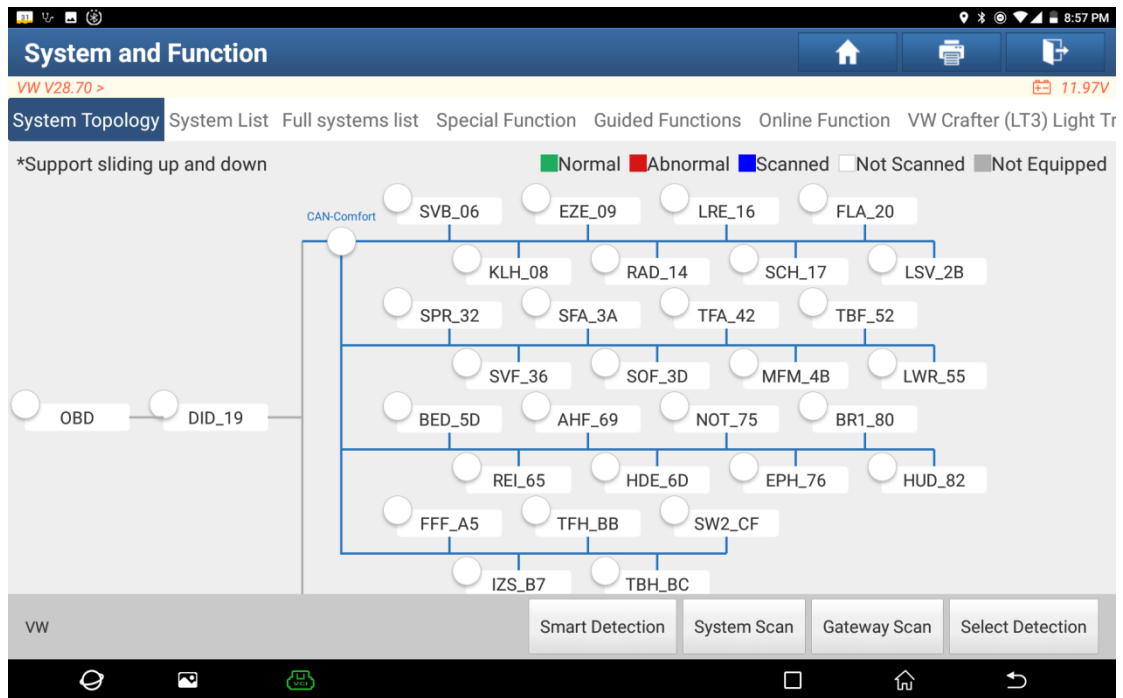


LAUNCH



6. Exit the [Special Function], enter the local diagnosis, enter the Volkswagen software, select [Special Function]>>[Anti-Theft Function], click [OK], enter the main menu of the anti-theft system, select [MQB Instrument], click [OK]. Select [Replacement Of Parts]>>[Transmission], click [OK], click [YES] to enter the gearbox replacement page, as shown in the figure:

LAUNCH



Show Menu

VW V28.70 > Menu 11.96V

Reset Service		Brake Pad Change	
Throttle Learning		Steering Angle Learning	
Diesel Engine Special Function		Battery Matching	
Anti-Theft Function		Air Suspension Matching	
Headlamp Adjustment		Dealership Code	
Transport Mode		Airbag Reset	
Enable/Disable Start-Stop		Electronic Water Pump Started	

VW

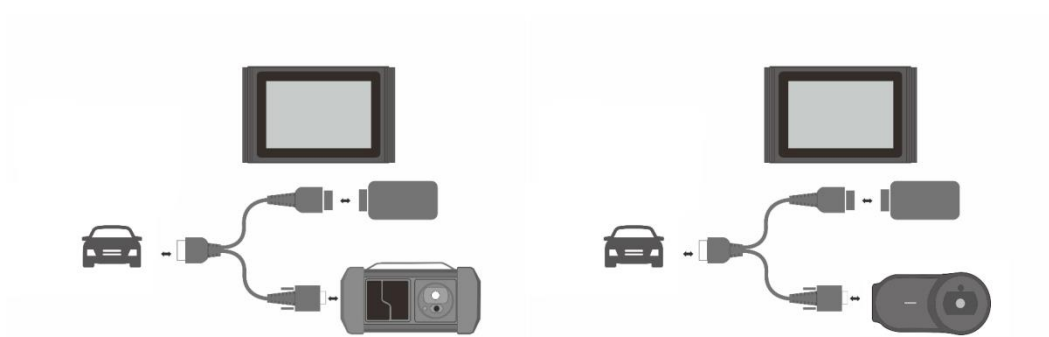
LAUNCH

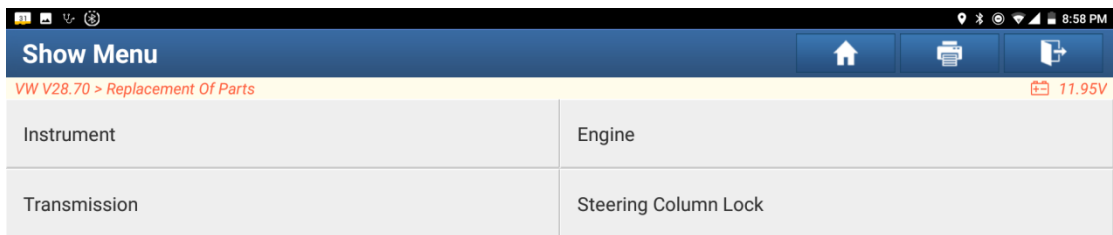
Show Menu		VW V28.70 > Menu		11.94V	
2nd And 3rd Generation Immobilizer		4th Generation Immobilizer			
5th Immobilizer		MQB Instrument			
Engine		Online IMMO Matching			
One-Button Key Learning					



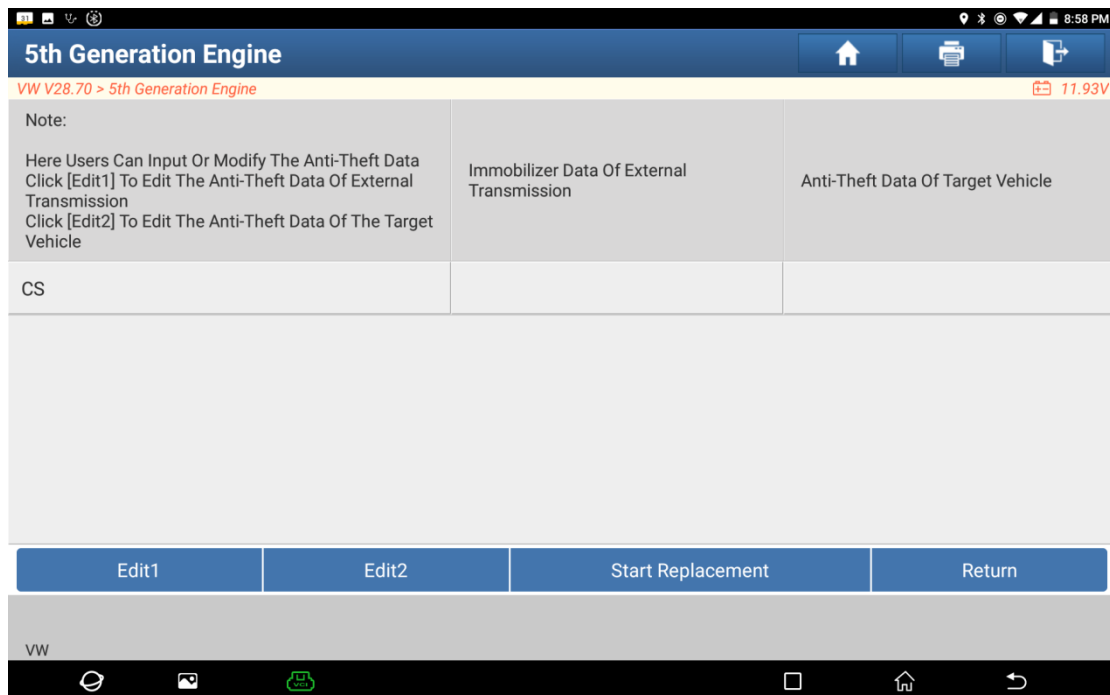
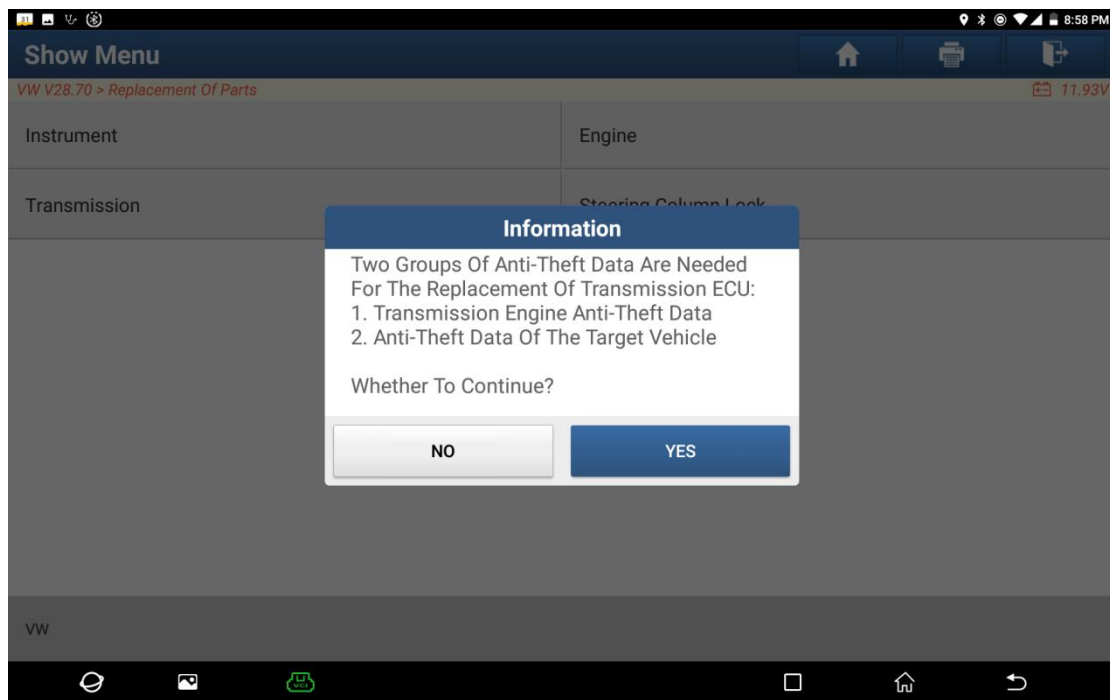
Information		VW V28.70 > Menu		11.94V	
-------------	--	------------------	--	--------	--

Please simultaneously connect the diagnostic connector and anti-theft programmer (please connect according to the left diagram if the name of anti-theft programmer is G3; and connect according to the right diagram if it is G1)



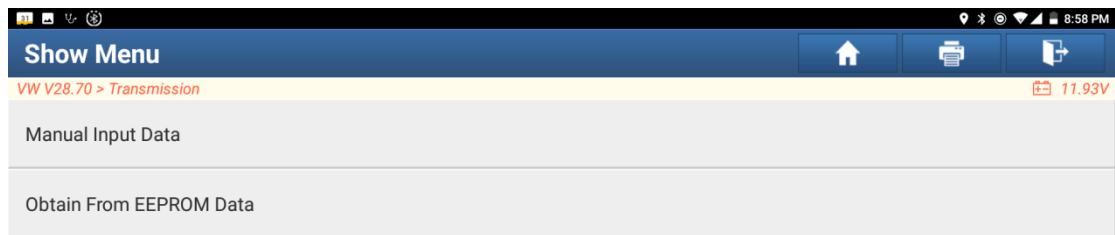
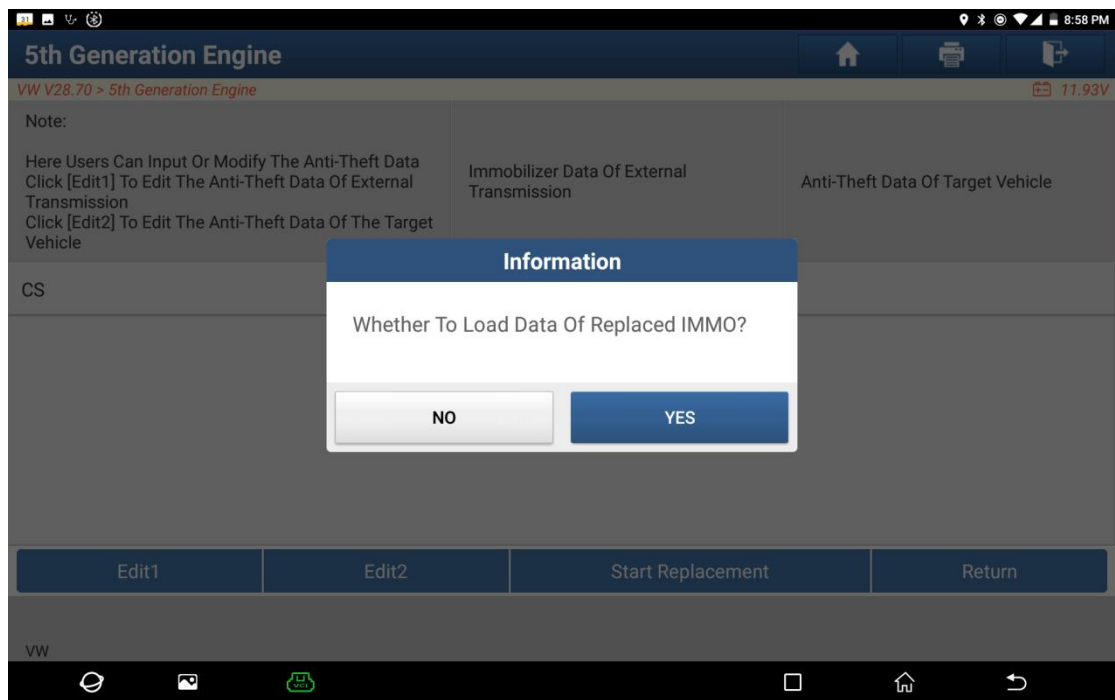


LAUNCH

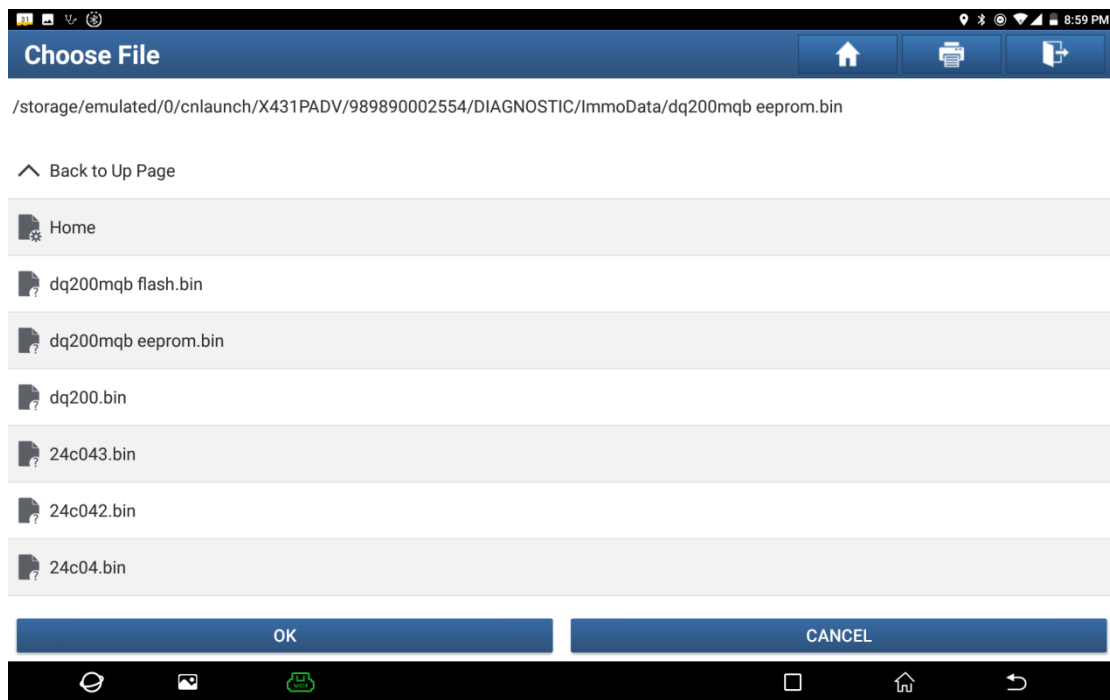


7. Select [Edit1], click [NO], click [Obtain From EEPROM Data], select the new gearbox EEPROM data backed up in step 5, and click [OK], as shown in the figure:

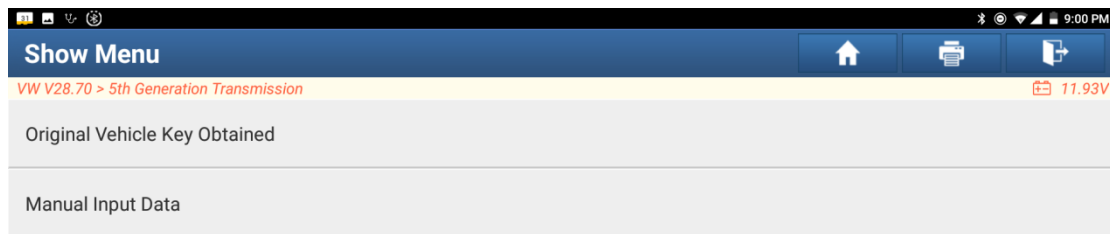
LAUNCH



LAUNCH



- Click [Edit2], if you have obtained the relevant data of the original vehicle gearbox from other equipment, select [Manual Input Data] and enter the 16-byte CS code of the original vehicle gearbox, as shown in the figure below: (Note: If there is no anti-theft data of the target vehicle, select [Original Vehicle Key Obtained], put the original vehicle key in the anti-theft programmer G3, and just follow the information prompts to complete, no need to enter any data to complete the replacement)



LAUNCH

8:55 AM

Show Menu

VW V28.70 > 5th Generation Transmission

Original Vehicle Key Obtained

Manual Input Data

Information

Please Input The 16-Digit CS Of The Target Vehicle Transmission:

CANCEL OK

q w e r t y u i o p
a s d f g h j k l
z x c v b n m ! ?
?123 , .

9:00 AM

5th Generation Engine

VW V28.70 > 5th Generation Engine

Note:
Here Users Can Input Or Modify The Anti-Theft Data
Click [Edit1] To Edit The Anti-Theft Data Of External Transmission
Click [Edit2] To Edit The Anti-Theft Data Of The Target Vehicle

	Immobilizer Data Of External Transmission	Anti-Theft Data Of Target Vehicle
CS	A0657E00355B9C92F1DFE08749E2B669	D5F8238AC05B470A81E3CF6A1E803D19

Edit1 Edit2 Start Replacement Return

VW

LAUNCH

- Click the [Start Replacement] button, and input the original car's VIN code, power level and CS code of the original car instrument according to the information prompts to complete the gearbox replacement, as shown in the figure:

