

LAUNCH

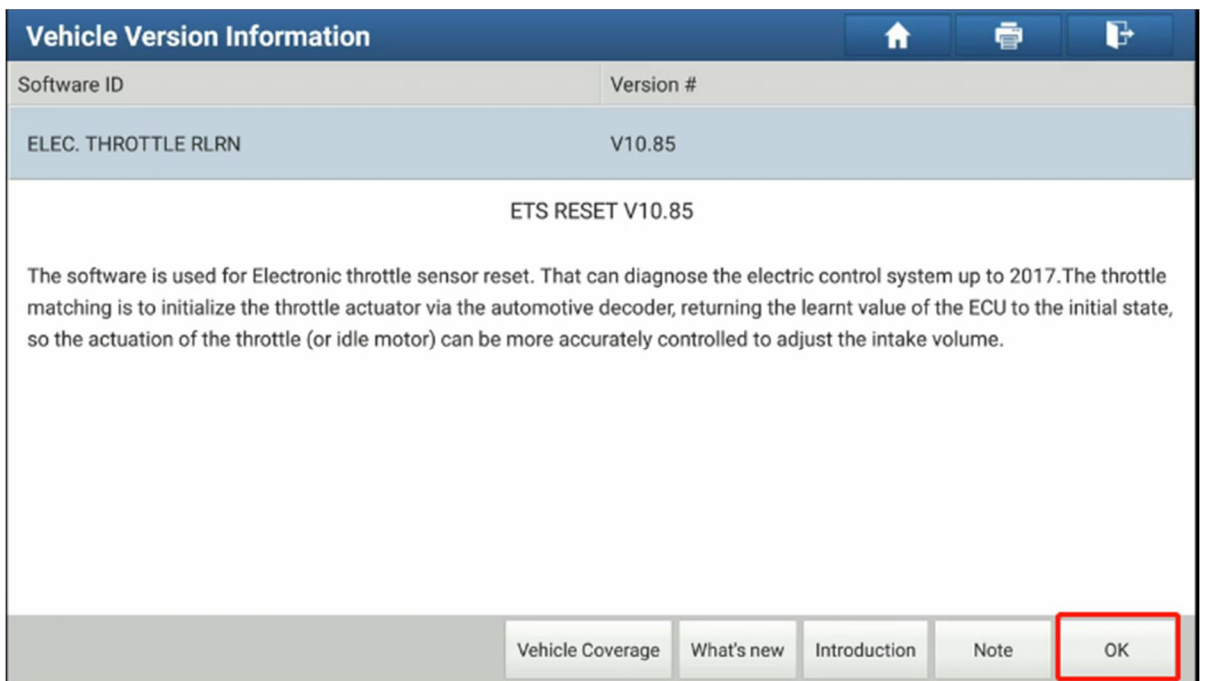
Toyota Throttle Relearn

Description:

After you change throttle, we need to carry out throttle relearn.

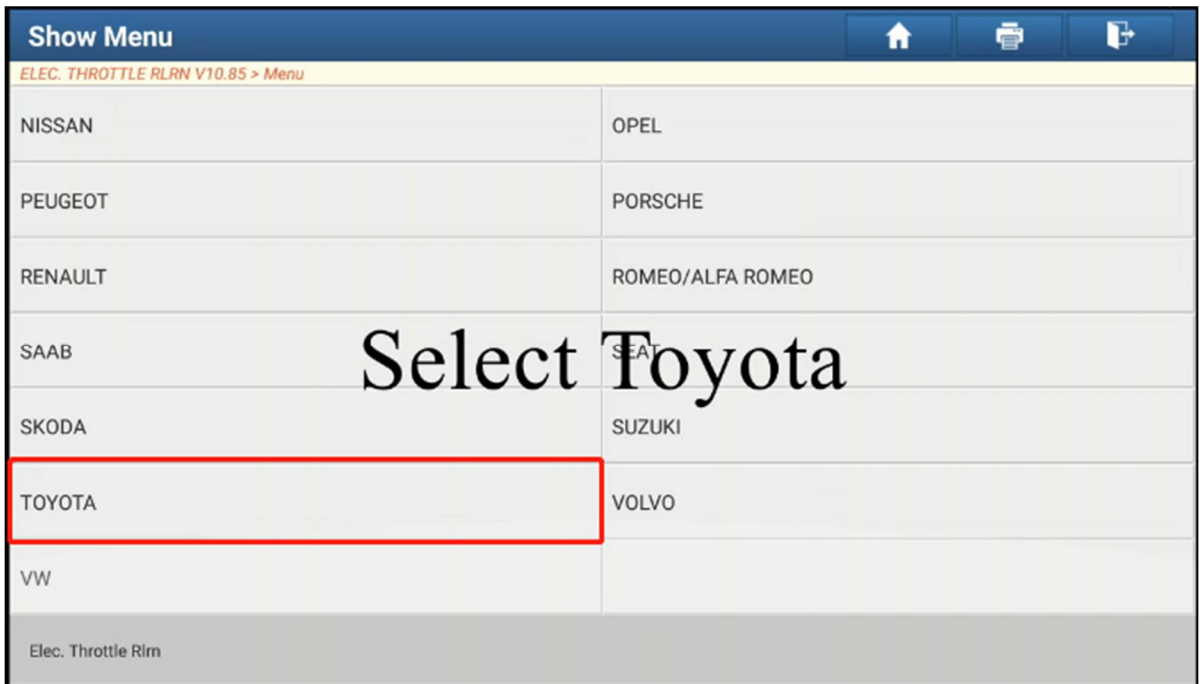
Steps:

1. Choose throttle relearn.

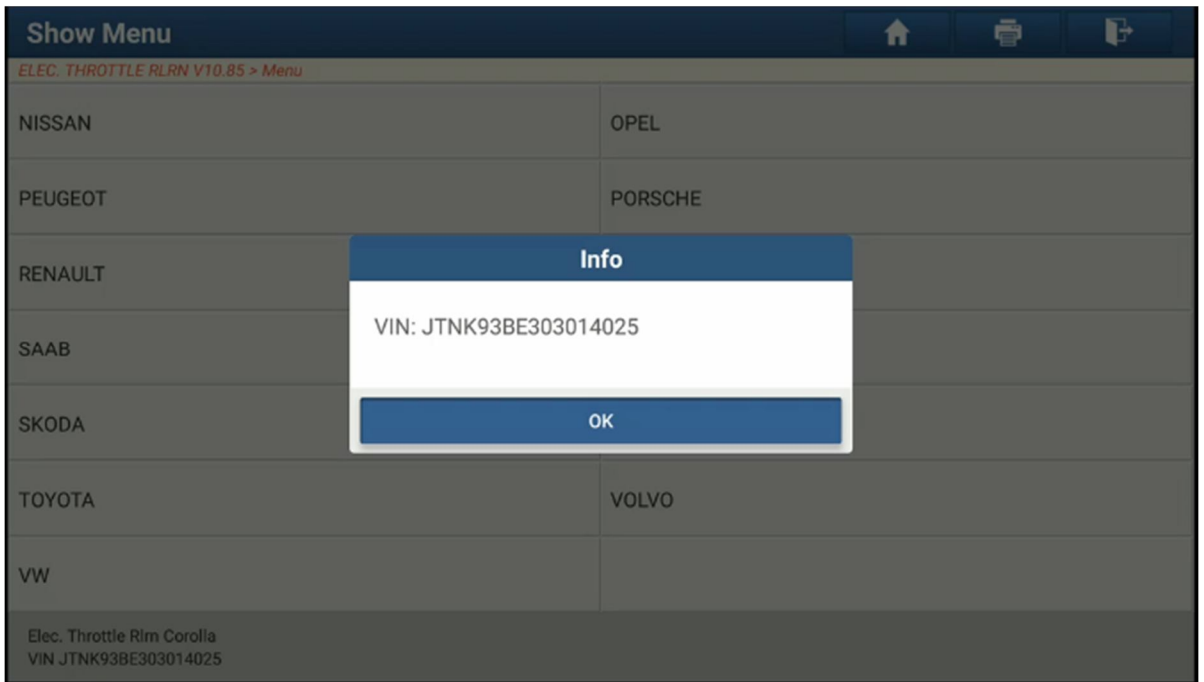


LAUNCH

2. Select Toyota.

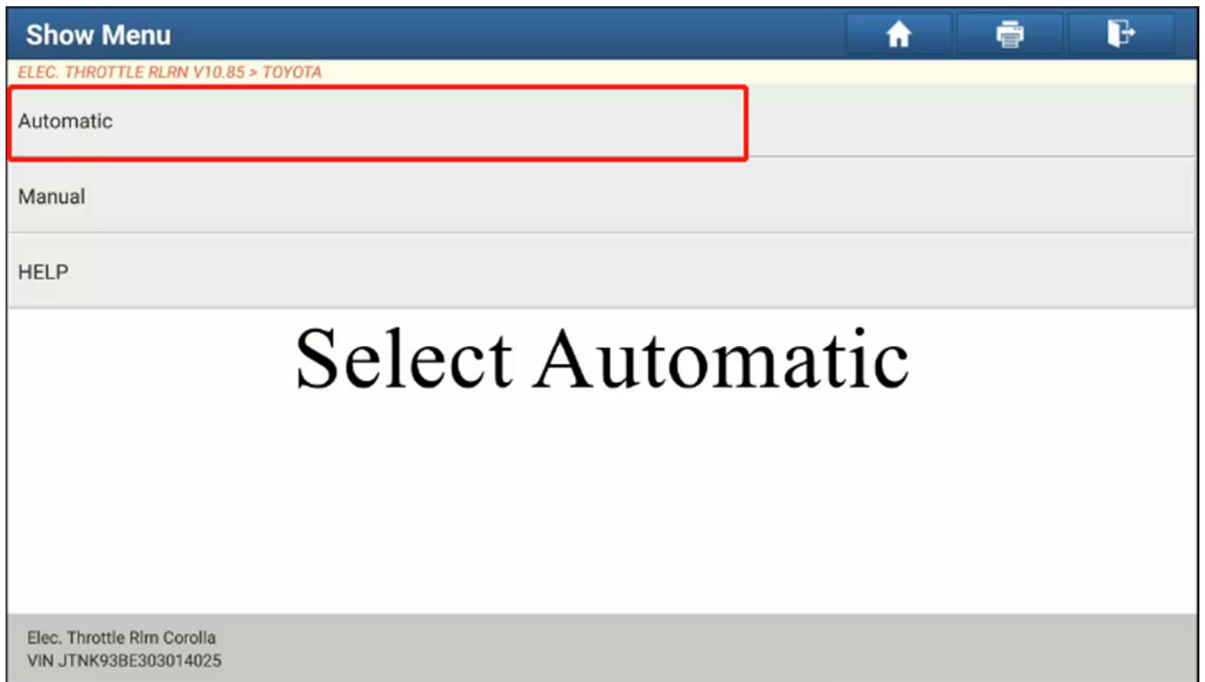


3. Turn on the ignition, the system will read the car info automatically.

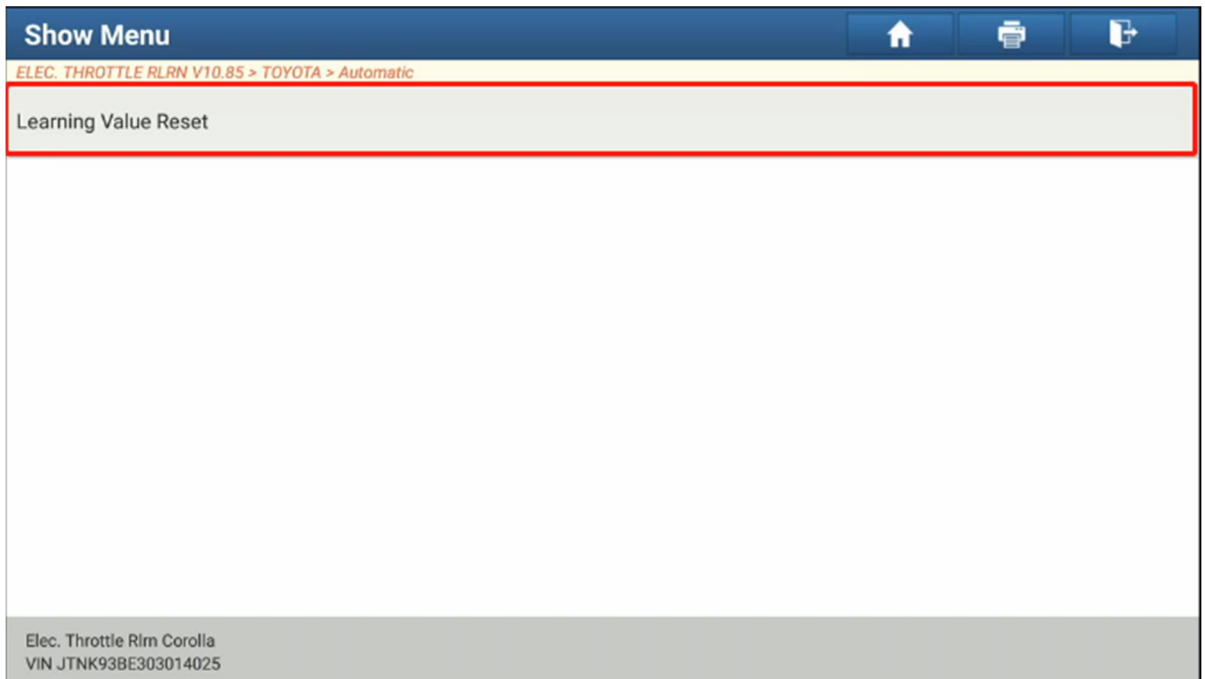


LAUNCH

4. Select Automatic.

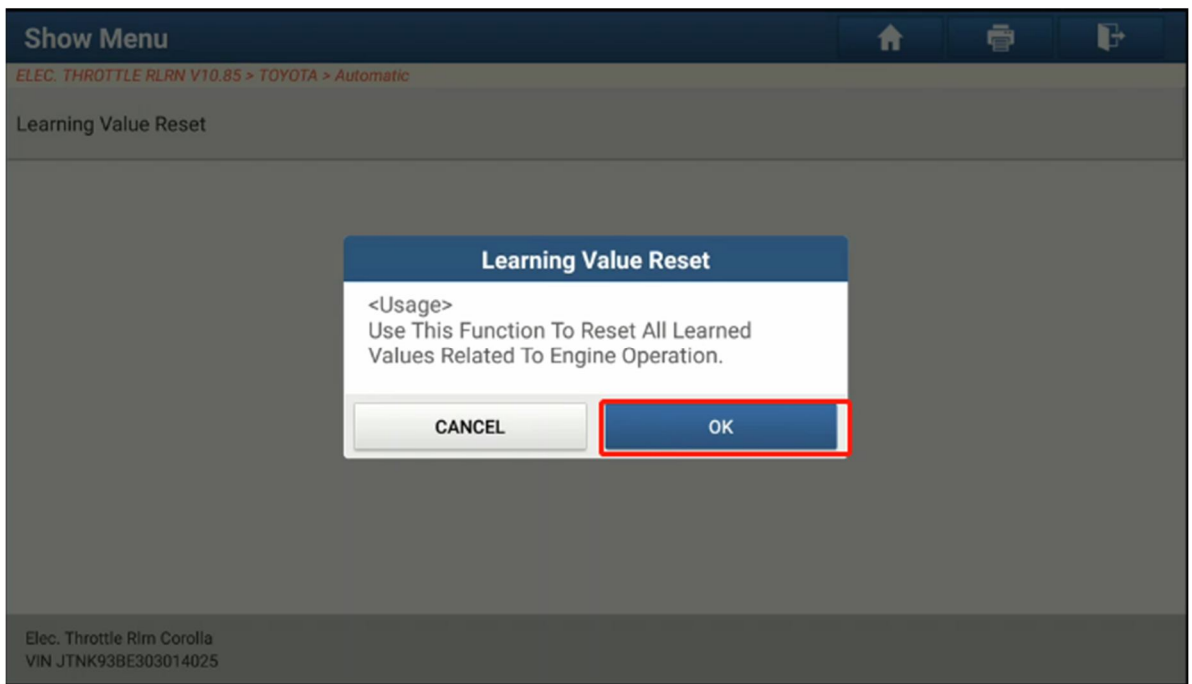


5. Select Learning Value Reset.

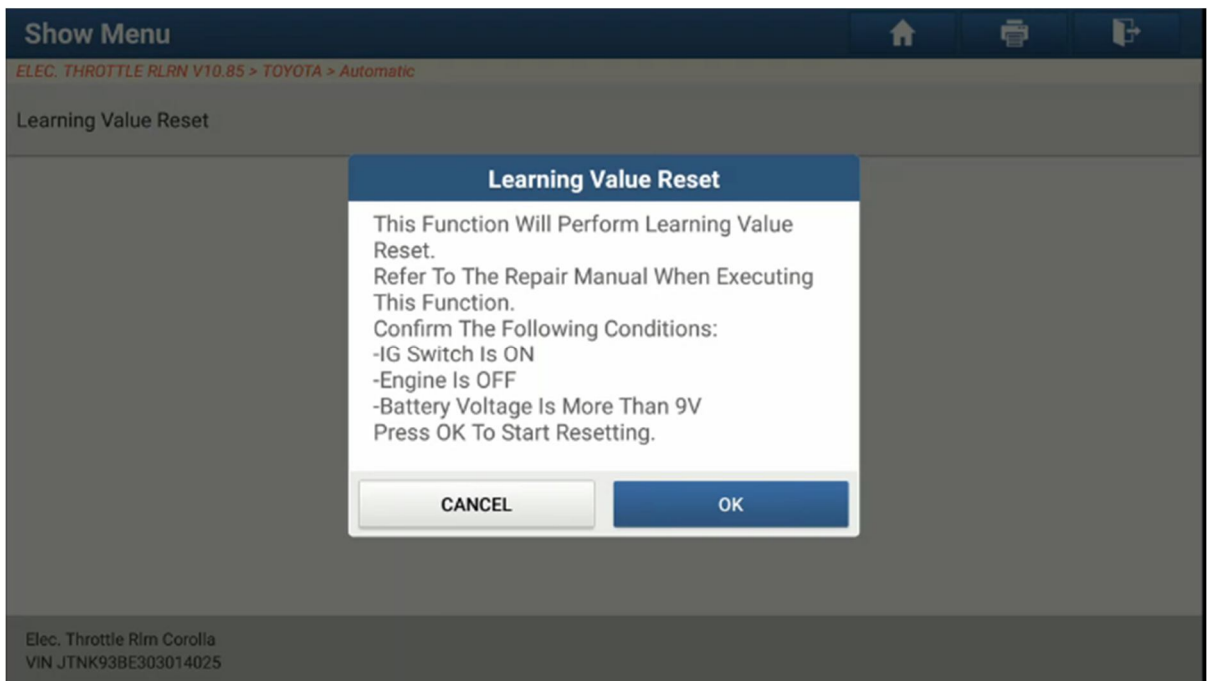


LAUNCH

6. Choose Ok to start.

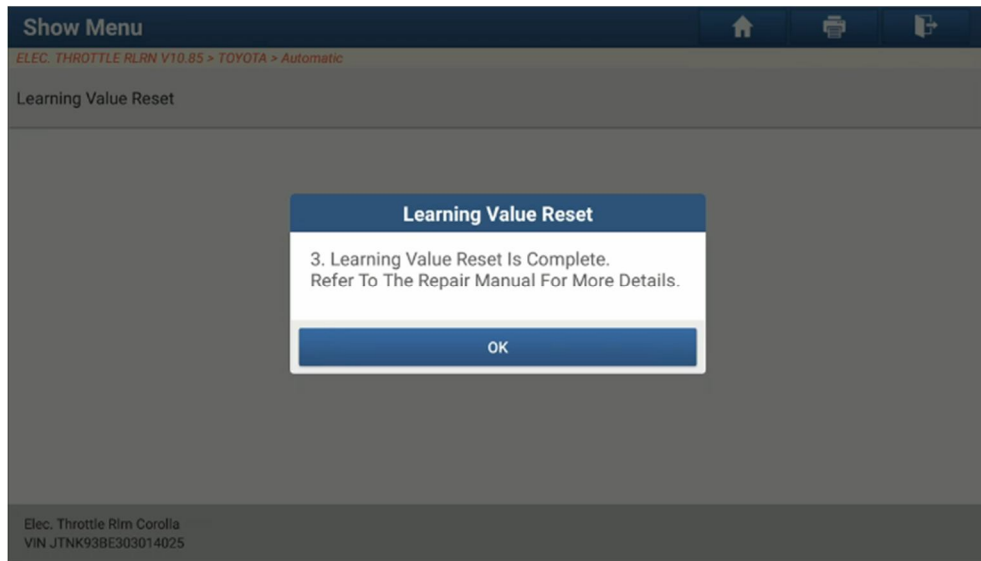


7. Then it will perform learning valve reset. Refer to the manual when executing this function.



LAUNCH

8. Reset completed.



The end.