

Read and Write ISN Code Instruction of BMW F Chassis Engine ECU

Introduction:

Support some BMW F chassis N20/N55/S63/N63 engine ECU read and write ISN code function, used for CAS4+ key overall loss, CAS4/CAS4+ replacement read and write ISN code, engine replacement read and write ISN code.

Supporting list:

MEVD172Y

SWFL-0000D07-059.008.001	SWFL-0000D07-079.005.001
SWFL-0000D07-089.050.001	SWFL-0000D07-089.070.001
SWFL-0000D07-089.080.001	SWFL-0000D07-089.090.001
SWFL-0000D07-089.100.001	SWFL-00007D5-129.005.001
SWFL-00007D5-179.003.001	SWFL-00007D5-179.004.001
SWFL-00007D5-199.003.001	SWFL-00007D5-199.005.001
SWFL-00007D5-199.007.001	SWFL-00007D5-199.008.001
SWFL-00007D5-209.005.001	SWFL-00007D5-209.006.001
SWFL-0000FEF-089.010.001	SWFL-0000FEF-089.090.001
SWFL-0000FEF-099.070.003	SWFL-0000FEF-099.110.002
SWFL-0000FEF-099.130.001	SWFL-0000FEF-099.140.001
SWFL-0000FEF-119.100.001	SWFL-0000FEF-129.070.001
SWFL-0000FEF-129.090.001	SWFL-0000FEF-129.100.001
SWFL-000017D5-069.160.001	SWFL-000017D5-069.170.001
SWFL-000017D5-079.160.001	SWFL-000017D5-079.200.001
SWFL-000017D5-089.070.001	SWFL-000017D5-089.110.001

S63TU_R0

S63TU_L0

SWFL-000010CA-049.050.001	SWFL-000010CA-059.090.001
SWFL-000010CA-059.120.001	SWFL-000010CA-059.130.001
SWFL-000010CA-059.140.001	SWFL-000010CA-059.080.001

N63TU_R0

N63TU_L0

SWFL-000010C8-059.130.001	SWFL-000010C8-059.140.001
---------------------------	---------------------------

MEVD1724

SWFL-0000ABF-049.140.001	SWFL-0000ABF-049.160.001
SWFL-0000ABF-059.070.002	SWFL-0000ABF-059.080.001
SWFL-0000ABF-059.100.001	SWFL-0000ABF-059.110.002
SWFL-0000ABF-059.110.003	SWFL-0000ABF-059.120.001
SWFL-0000ABF-059.130.001	SWFL-0000ABF-059.145.001
SWFL-0000ABF-059.150.001	SWFL-0000ABF-059.160.001
SWFL-0000113D-049.140.001	SWFL-0000113D-049.160.001
SWFL-0000113D-059.070.002	SWFL-0000113D-059.080.002
SWFL-0000113D-059.110.002	SWFL-0000113D-059.100.002

LAUNCH

SWFL-0000113D-059.120.001 SWFL-0000113D-059.140.001
SWFL-0000113D-059.150.001 SWFL-0000113D-059.160.001
SWFL-000013E7-019.030.001 SWFL-000013E7-019.080.002
SWFL-000013E7-019.110.003 SWFL-000013E7-019.140.001
SWFL-000013E7-019.150.001 SWFL-000013E7-019.160.001
SWFL-000013E7-019.170.001 SWFL-000019A8-019.110.003
SWFL-000019A8-019.130.001 SWFL-000019A8-019.140.001
SWFL-000019A8-019.170.001 SWFL-00001C9F-019.070.001
SWFL-00001BC9-019.075.001 SWFL-00001402-059.080.001
SWFL-00001402-059.100.001 SWFL-00001402-059.110.002
SWFL-00001402-059.120.001 SWFL-00001402-059.140.001
SWFL-00001402-059.150.001 SWFL-00001402-059.160.001

MEVD1725

SWFL-00000E2B-049.050.001 SWFL-00000E2B-049.100.001
SWFL-00000E2B-049.140.001 SWFL-00000E2B-049.180.001
SWFL-00000E2B-049.190.002 SWFL-00000E2B-049.210.001
SWFL-00000E2B-049.220.001 SWFL-00000E2B-049.230.001
SWFL-00000E2B-049.240.001 SWFL-00000E2B-059.010.001

Tool Requirement

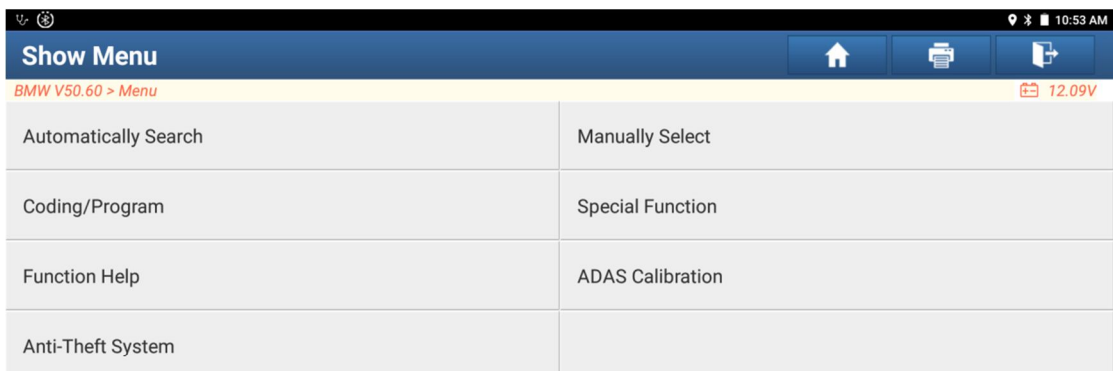
PRO or other android X431 tool, X-PRO G anti-theft device.

Software Requirement

BMW V50.54 or above

Operation

1. Enter BMW software, and choose "Anti-Theft System".



LAUNCH

2. Click Ok to execute the next step.

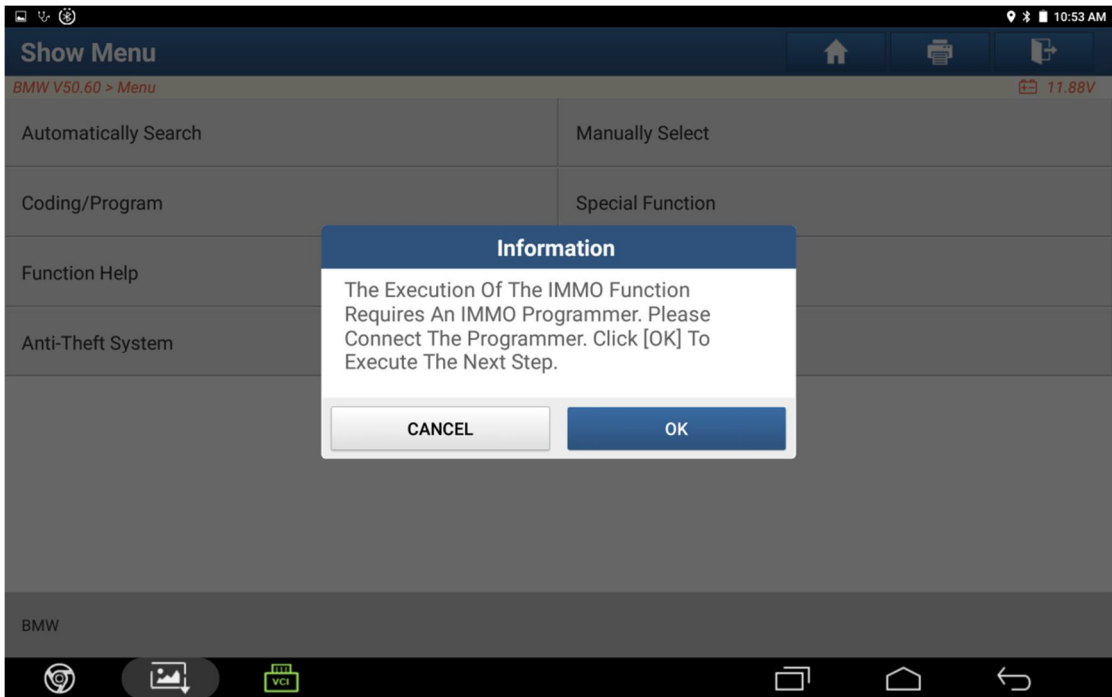
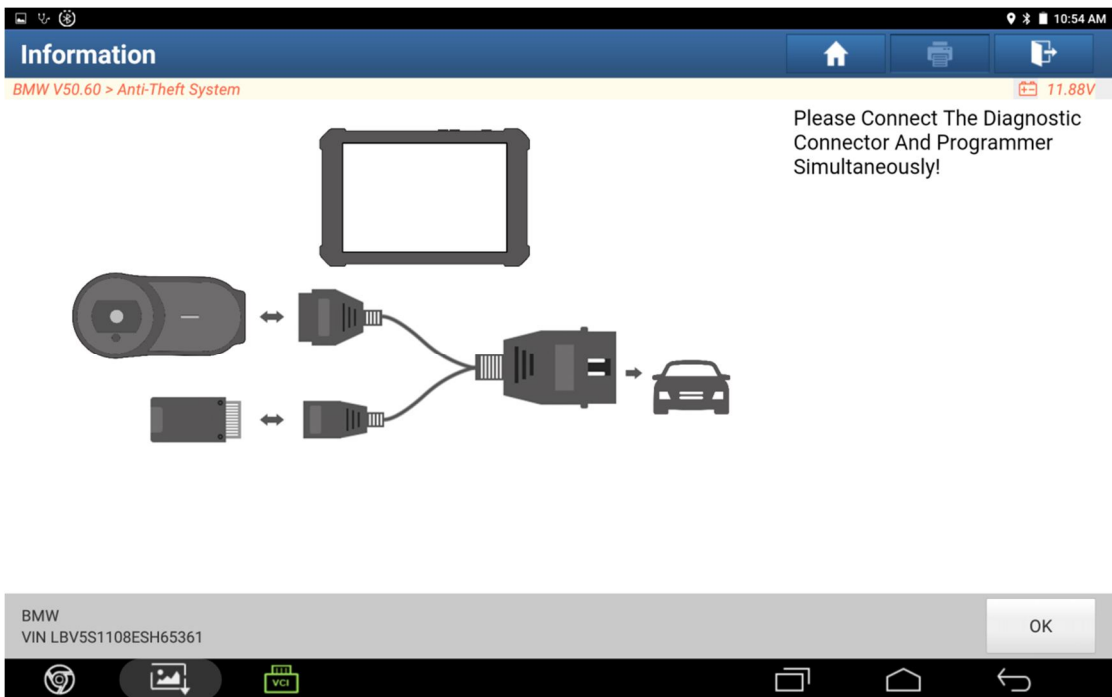


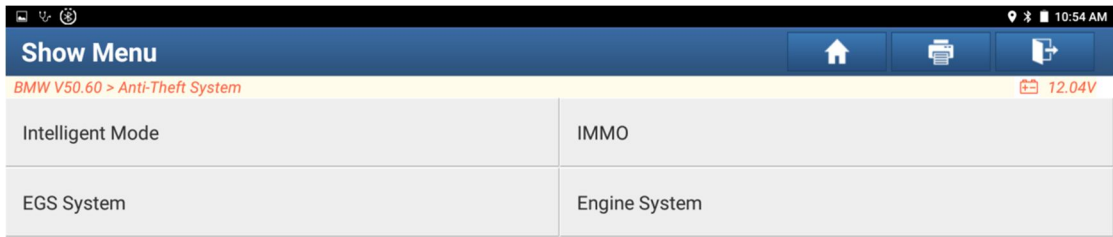
图 2

3. After enter anti-theft system, please connect X-PROG, diagnose tool, vehicle as the diagram show.

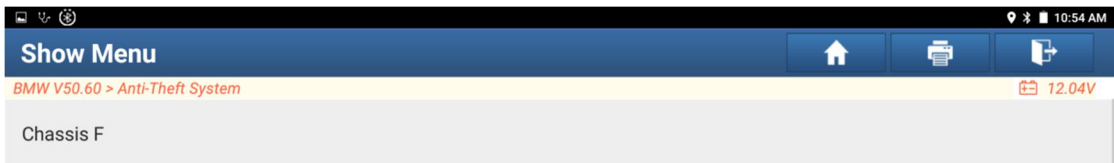


LAUNCH

4. Select Engine System.



5. Select Chassis F



LAUNCH

10. Succeed.

