

Benz E200 2010 Change Left HeadLamp ECU Coding

Vehicle: Mercedes Benz E200 2010, VIN: WDDHF4JB6BA2****.

After we change the left headlamp ECU, the left headlamp doesn't work well. And there is a fault code reminds that vehicle data SCN code wrong or error.

Steps:

1. Choose Benz software version higher than V48.20, enter it.

Vehicle Version Information		🏠	🖨️	📄
Software ID	Version #			
MERCEDES	V49.23			

Mercedes Benz Series V49.23 Full System

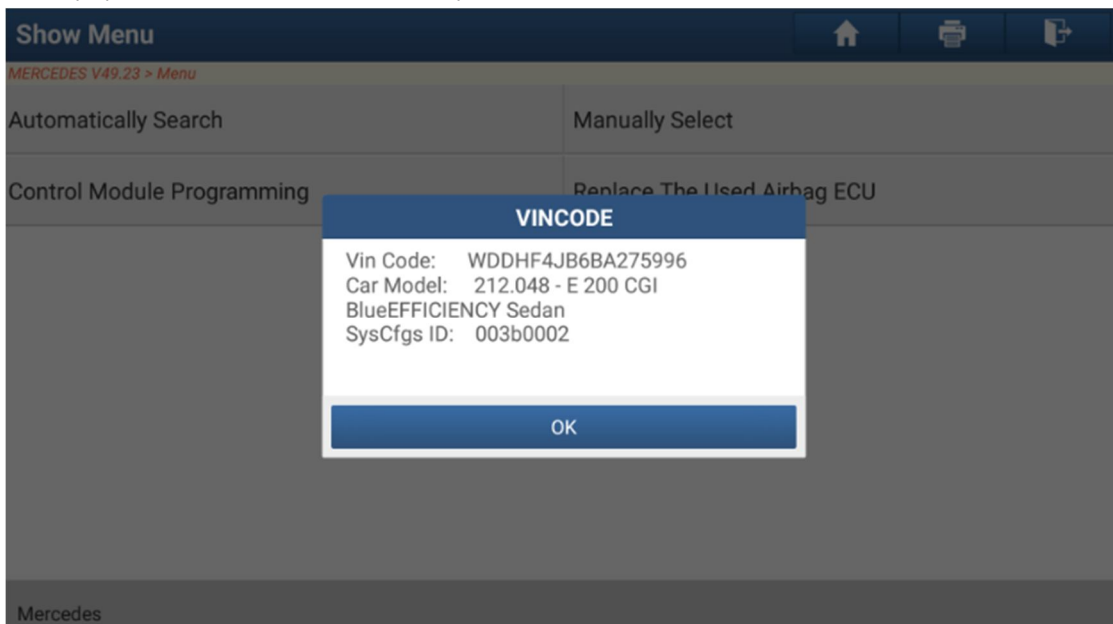
This Program Diagnoses Mercedes Electronic Control Systems Coverage From 1997 - 2018, Including: Power, Chassis, Body, Info, Seat & Door, A/C, Etc.

☰ Coverage What's new Introduction Note Bluetooth OK

2. Select automatically search.



3. It will pop out VIN code and car model, please confirm and click OK.



4. Now we need to select system. Because this car's left and right SCN code are the same. So we can read out right headlamp's code, and set left headlamp ECU's code to the same. So we choose XALWA_ **R-Right** Xenon headlamp(E2n1).

Show Menu	
MERCEDES V49.23 > Automatically Search	
Trailer Recognition Module - Trailer recognition(N28/1)	XALWA_L - Left Xenon headlamp(E1n1)
XALWA_R - Right Xenon headlamp(E2n1)	CGW[ZGW] - Central gateway(CGW[ZGW])
KOMO/mbrace - Communication Module'Telematics Services'/Notrufsystem	COU[ZBE] - Audio/COMAND Operating Unit
DAB - Digital Audio Broadcasting(N87/3)	ZAN - Audio/COMAND display(A40/8)
D_FOL - Display In Left Rear Passenger Compartment	D_FOR - Display In Right Rear Passenger Compartment
Drive Kit Plus - Drive Kit For Iphone	AVE-H - DVD player(A40/4)
Audio/COMAND - Audio Or COMAND(A2-A2/56-A40/3)	Head-up display
Mercedes 212.048 - E 200 CGI BlueEFFICIENCY Sedan	

5. Switch On ignition.

Show Menu	
MERCEDES V49.23 > Automatically Search	
Trailer Recognition Module - Trailer recognition(N28/1)	XALWA_L - Left Xenon headlamp(E1n1)
XALWA_R - Right Xenon headlamp(E2n1)	CGW[ZGW] - Central gateway(CGW[ZGW])
KOMO/mbrace - Communication Services'/Notrufsystem	AND Operating Unit
DAB - Digital Audio Broadcasting	display(A40/8)
D_FOL - Display In Left Rear Pa	it Rear Passenger
Drive Kit Plus - Drive Kit For Iphone	AVE-H - DVD player(A40/4)
Audio/COMAND - Audio Or COMAND(A2-A2/56-A40/3)	Head-up display
Mercedes 212.048 - E 200 CGI BlueEFFICIENCY Sedan	

Enter System

Switch On Ignition.

Cancel
OK

6. Choose Variant Coding.

Show Menu	
Module Information	Read Fault Code
Clear Fault Code	Read Data Stream
Actuation Test	Special Function
Variant Coding	Control Unit Programming
SCN CODING	Coding Backup/Reserve

Mercedes 212.048 - E 200 CGI BlueEFFICIENCY Sedan

7. It will list out all the parameter of **Right headlamp**, some maybe less than below list.

Show Menu	
Vehicle data set_cornering light	Vehicle data set_active_cornering light
Vehicle data set_general	Vehicle data set_motorway light
Vehicle data set_extended_fog light	Vehicle data set_high-beam
Vehicle data set_hazard light	Vehicle data set_IHC
Vehicle data set_LDC	Vehicle data set_LUC
Vehicle data set_LWR	Vehicle data set_TM
Vehicle data set_LDC_binning	Vehicle data set_LDC_developer

Mercedes 212.048 - E 200 CGI BlueEFFICIENCY Sedan

8. Enter "Vehicle data set_general ". You can find the default coding of it. Write it down.

Variant Coding		
MERCEDES V49.23 > Automatically Search		
No.	Item	Coding
001	Daten	W222 ILS SAE right-hand drive series steering
<div style="display: flex; justify-content: space-around; margin-top: 20px;"> Write Coding Backup Recover </div>		
Mercedes 212.048 - E 200 CGI BlueEFFICIENCY Sedan		

9. Exit XALWA_R-Right Xenon headlamp(E2n1), and enter XALWA_**L-Left** Xenon headlamp (E2n1).

Show Menu	
MERCEDES V49.23 > Automatically Search	
Trailer Recognition Module - Trailer recognition(N28/1)	XALWA_L - Left Xenon headlamp(E1n1)
XALWA_R - Right Xenon headlamp(E2n1)	CGW[ZGW] - Central gateway(CGW[ZGW])
KOMO/mbrace - Communication Module'Telematics Services'/Notrufsystem	COU[ZBE] - Audio/COMAND Operating Unit
DAB - Digital Audio Broadcasting(N87/3)	ZAN - Audio/COMAND display(A40/8)
D_FOL - Display In Left Rear Passenger Compartment	D_FOR - Display In Right Rear Passenger Compartment
Drive Kit Plus - Drive Kit For Iphone	AVE-H - DVD player(A40/4)
Audio/COMAND - Audio Or COMAND(A2-A2/56-A40/3)	Head-up display
Mercedes 212.048 - E 200 CGI BlueEFFICIENCY Sedan	

10. Same steps you will find the parameter of **Left** headLamp. Enter Vehicle data set general.

Show Menu	
MERCEDES V49.23 > Automatically Search	
Vehicle data set_cornering light	Vehicle data set_active_cornering light
Vehicle data set_general	Vehicle data set_motorway light
Vehicle data set_extended_fog light	Vehicle data set_high-beam
Vehicle data set_hazard light	Vehicle data set_IHC
Vehicle data set_LDC	Vehicle data set_LUC
Vehicle data set_LWR	Vehicle data set_TM
Vehicle data set_LDC_binning	Vehicle data set_LDC_developer
Mercedes 212.048 - E 200 CGI BlueEFFICIENCY Sedan	

11. We can find the value here are blank.

Variant Coding		
MERCEDES V49.23 > Automatically Search		
No.	Item	Coding
001	Daten	---
Write Coding	Backup	Recover
Mercedes 212.048 - E 200 CGI BlueEFFICIENCY Sedan		

12. Double click the blank value you can find the value list it could be, please set it to the same as the right headlamp.

Snow Menu	
MERCEDES V49.23 > Automatically Search	
VAN 447 VA-drive wheelbase A2 ECE left-hand drive	W222 ILS SAE right-hand drive series steering
V222 ILS SAE right-hand drive series steering	X222 ILS SAE right-hand drive series steering
W222 ILS ECE right-hand drive series steering	W222 ILS ECE left-hand drive series steering
V222 ILS ECE right-hand drive series steering	V222 ILS ECE left-hand drive series steering
X222 ILS ECE right-hand drive series steering	X222 ILS ECE left-hand drive series steering
Default	212M/207M static LED SAE

13. Click Write coding.

Variant Coding		
MERCEDES V49.23 > Automatically Search		
No.	Item	Coding
001	Daten	W222 ILS SAE right-hand drive series steering
Write Coding Backup Recover		
Mercedes 212.048 - E 200 CGI BlueEFFICIENCY Sedan		

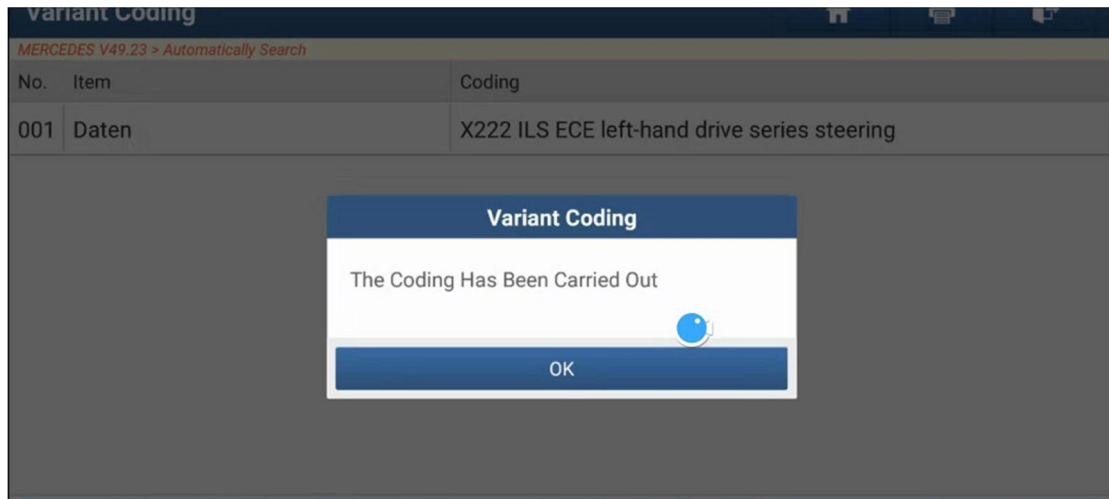
Click Yes to continue coding.

No.	Item	Coding
001	Daten	X222 ILS ECE left-hand drive series steering

Variant Coding

Is The Coding To Be Transferred To The Control Unit?

14. Then we can see coding succeed. Click ok to exit.



15. Please set other parameter of left lamp by the same way.