

# Benz 164 Chassis Power Windows Activation

## Function Instrument:

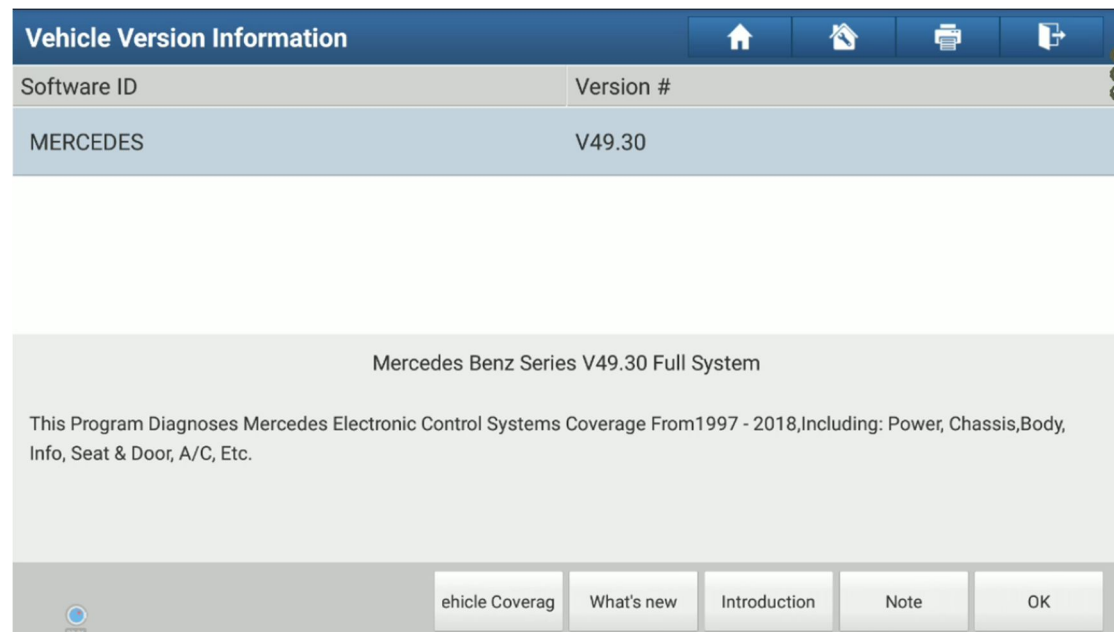
This action test is mainly used to activate the power window, applicable to chassis: 251, 164, x164.

## Notes:

- During the function, no external force can be used to limit the power window up and down. Moving parts may cause pinching, crushing, and even danger of limb cutting;
- Make sure that no one stays in the scope of the door and that nothing is in the scope of the door before performing the function;
- When activating the electric windows, the vehicle must be observed all the time, and a sufficient safety distance must be kept from the vehicle;

## Operation Steps:

1. Enter Mercedes V49.30







2. Select "Manually Select".

Show Menu	
<i>MERCEDES V49.30 &gt; Menu</i>	
Automatically Search	Manually Select
Control Module Programming	Replace The Used Airbag ECU

3. Find "164-M" Class.

Show Menu	
<i>MERCEDES V49.30 &gt; Manually Select</i>	
129-SL Class(Up To 08/99)	129-SL Class(As Of 09/99)
140-S Class	156-GLA Class
163-ML Class	164-M Class
X164-GL Class	166-ML Class
166-GL Class	167-GLE Class
167-GLS Class	168-A Class
169-A Class(Up To 11/2005)	169-A Class(As Of 12/2005)

4. Select the correct Engine of your car.

Show Menu				
<i>MERCEDES V49.30 &gt; Manually Select &gt; 164-M Class</i>				
Gasoline Engine				
Diesel Engine				

5. Select correct driving.

Show Menu				
<i>MERCEDES V49.30 &gt; Manually Select &gt; 164-M Class &gt; Gasoline Engine</i>				
Left-hand Steering				
Right-hand Steering				

6. Select correct model.

Show Menu	
<i>MERCEDES V49.30 &gt; Manually Select &gt; 164-M Class &gt; Gasoline Engine &gt; Left-hand Steering</i>	
164.186 - ML 350 4MATIC	164.175 - ML 500 4MATIC
164.177 - ML 63 AMG	164.182 - ML 300
164.156 - ML 350	164.172 - ML 500/550 4MATIC
164.195 - ML 450 4MATIC HYBRID	

7. Select "Control Units".

Show Menu
<i>MERCEDES V49.30 &gt; Manually Select &gt; 164-M Class &gt; Gasoline Engine &gt; Left-hand Steering &gt; 164.186 - ML 350 4MATIC</i>
Health Report
Control Units

8. Select "Seats and Doors".

Show Menu	
<a href="#">MERCEDES V49.30</a> > <a href="#">Manually Select</a> > <a href="#">164-M Class</a> > <a href="#">Gasoline Engine</a> > <a href="#">Left-hand Steering</a> > <a href="#">164.186 - ML 350 4MATIC</a> > <a href="#">Control Units</a>	
Drive	Chassis
Body	Information And Communication
Seats And Doors	Air Conditioning

9. We try to activate FL door, Select "DCM\_FL-Door Control Module Front Left".

Show Menu	
<a href="#">MERCEDES V49.30</a> > <a href="#">Manually Select</a> > <a href="#">164-M Class</a> > <a href="#">Gasoline Engine</a> > <a href="#">Left-hand Steering</a> > <a href="#">164.186 - ML 350 4MATIC</a> > <a href="#">Control Units</a> > <a href="#">Seats And Doors</a>	
DCM_FL - Door Control Module Front Left	DCM_FR - Door Control Module Front Right
REDC - REAR_end Door Closing Control Module	ESA Driver - Electric Seat Adjustment Driver(With Memory)
ESA Passenger - Electric Seat Adjustment Front Passenger(With Memory)	DS_LF - Left Front Dynamic Seat
DS_RF - Right Front Dynamic Seat	DSP - Pneumatic Pump For Dynamic Seat
HS - Seat Heater	

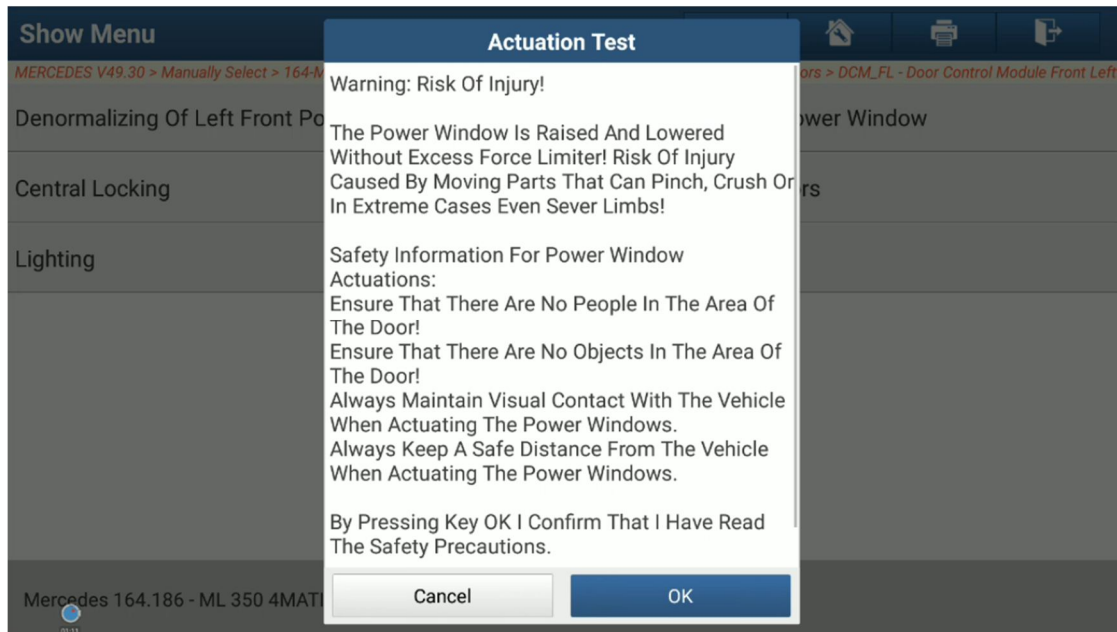
10. Select "Actuation Test".

Show Menu	
<i>MERCEDES V49.30 &gt; Manually Select &gt; 164-M Class &gt; Gasoline Engine &gt; Left-han...IC &gt; Control Units &gt; Seats And Doors &gt; DCM_FL - Door Control Module Front Left</i>	
Module Information	Read Fault Code
Clear Fault Code	Read Data Stream
Actuation Test	Special Function
Initial Startup	Variant Coding
Coding Backup/Reserve	

11. Select "Actuation Front Left Power Windows".

Show Menu	
<i>MERCEDES V49.30 &gt; Manually Select &gt; 164-M Class &gt; Gasoline Engine &gt; Left-han...IC &gt; Control Units &gt; Seats And Doors &gt; DCM_FL - Door Control Module Front Left</i>	
Denormalizing Of Left Front Power Window	Actuation Front Left Power Window
Central Locking	Exterior Rearview Mirrors
Lighting	

12. Read the warning carefully, and click “OK” to continue.



13. It showed “FL Power Window” is “Not Normalized”. Press F3: Down F4: Up F12: Stop.

Active Test		
Name	Value	Unit
Front Left Power Window	NOT NORMALIZED	
Front Left Window Position	18483	
Closing Relay Is Actuated.	NO	
Opening Relay Is Actuated.	NO	
Risk Of Injury! The Power Window Is Raised And Lowered Without Excess Force Limiter!		
	F3	F4
		F12

14. Please click F3 or F4, then we can see the power window move, and after those operation, the “FL Power Window” value changed to “Normalized”.

Active Test		
Name	Value	Unit
Front Left Power Window	NORMALIZED	
Front Left Window Position	18483	
Closing Relay Is Actuated.	NO	
Opening Relay Is Actuated.	NO	
Risk Of Injury! The Power Window Is Raised And Lowered Without Excess Force Limiter!		
F3	F4	F12

15. After step14, exit action test and clear DTC, then exit software, turn off ignition. FL power window become normal.

The End.