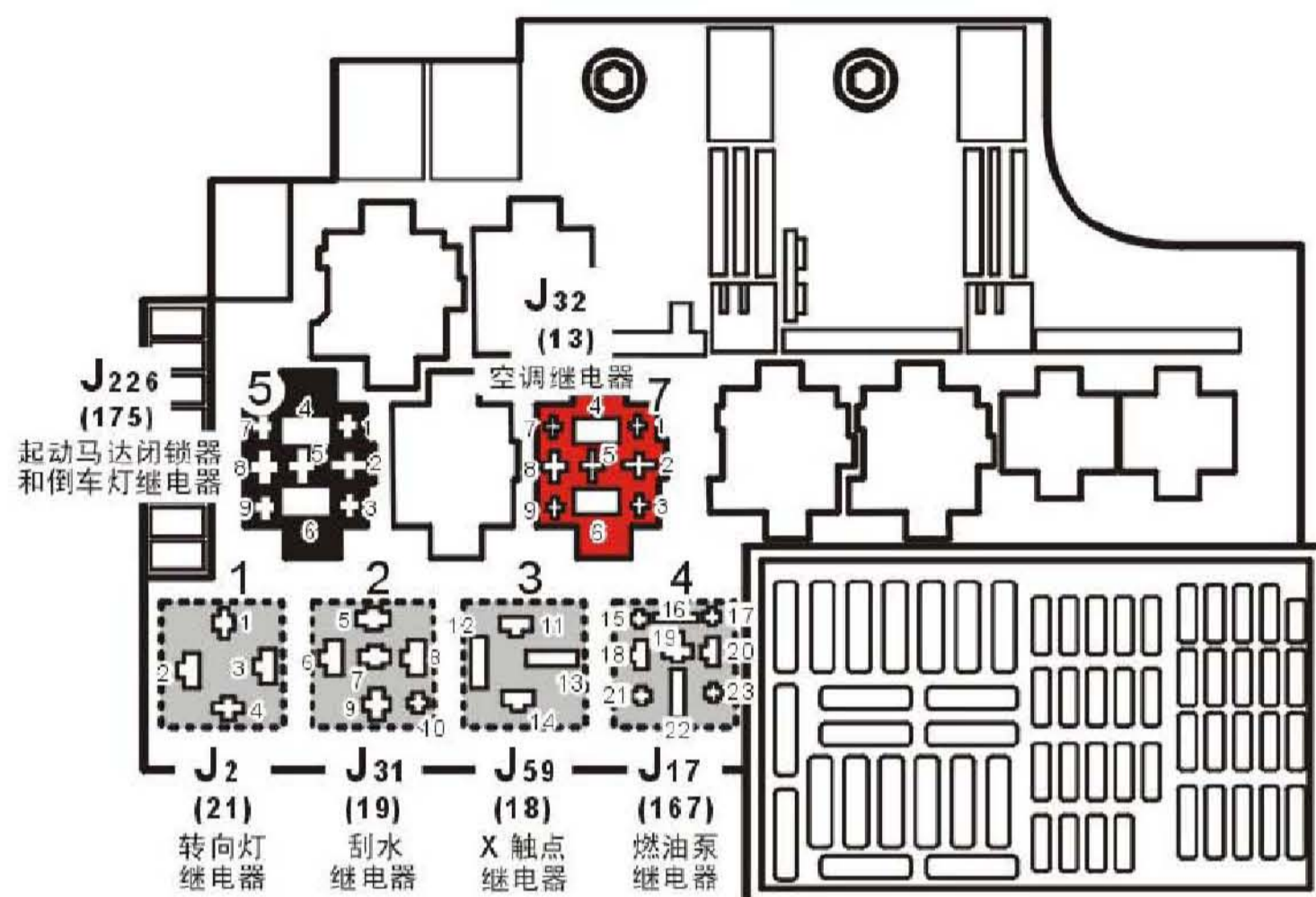
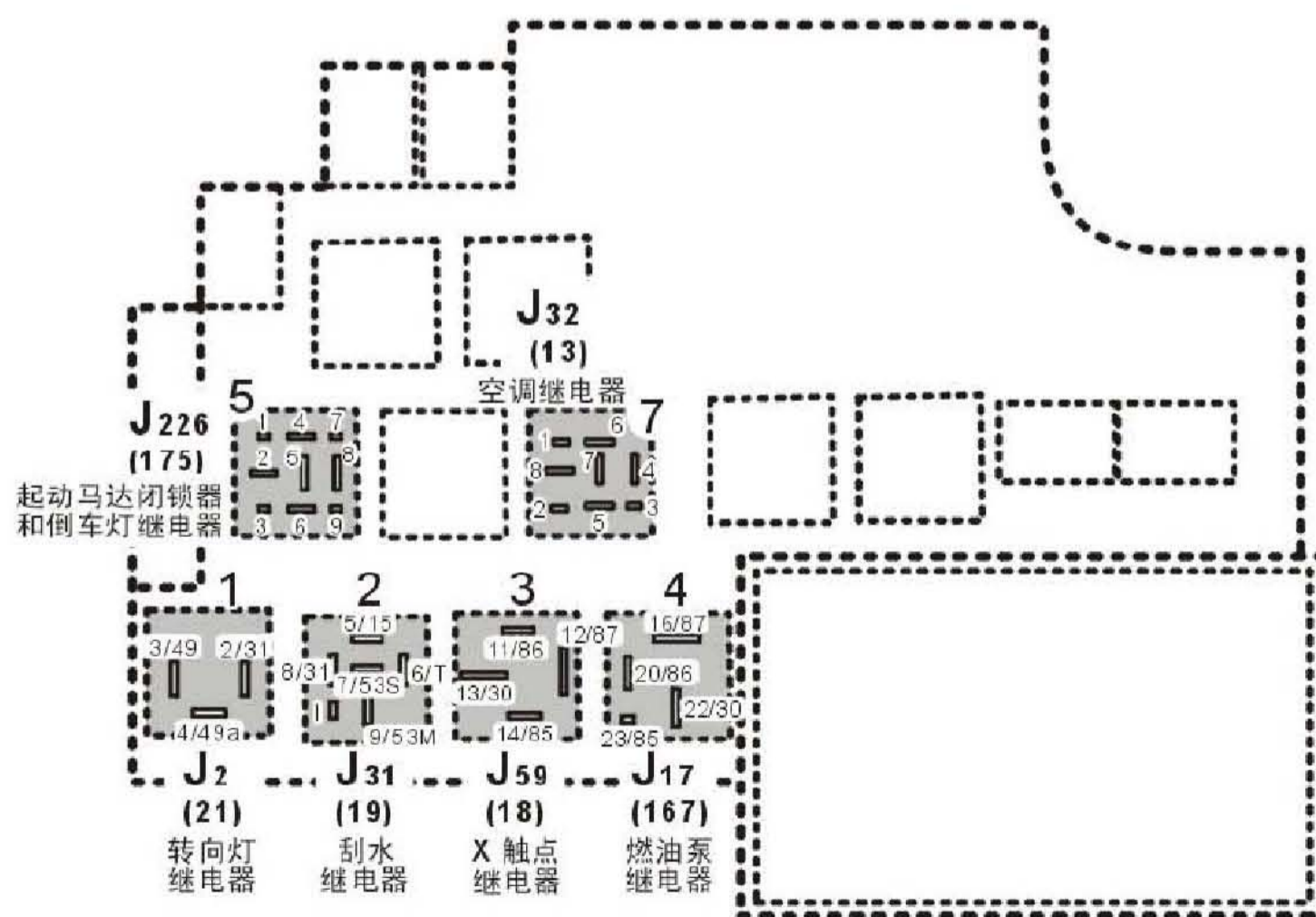


### 3. 保险丝、继电器及插头布置

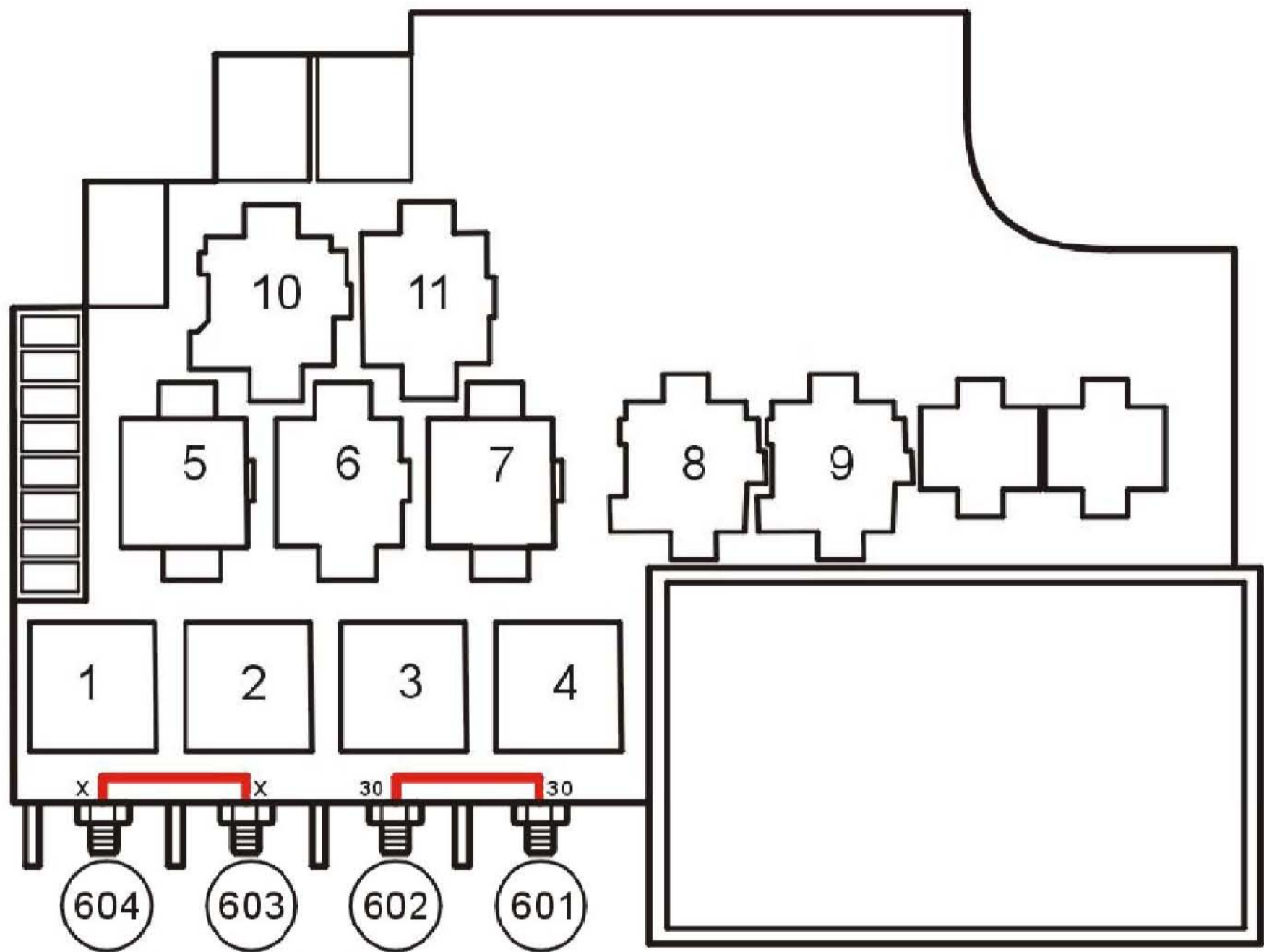
#### 继电器板(继电器-保险丝支架)



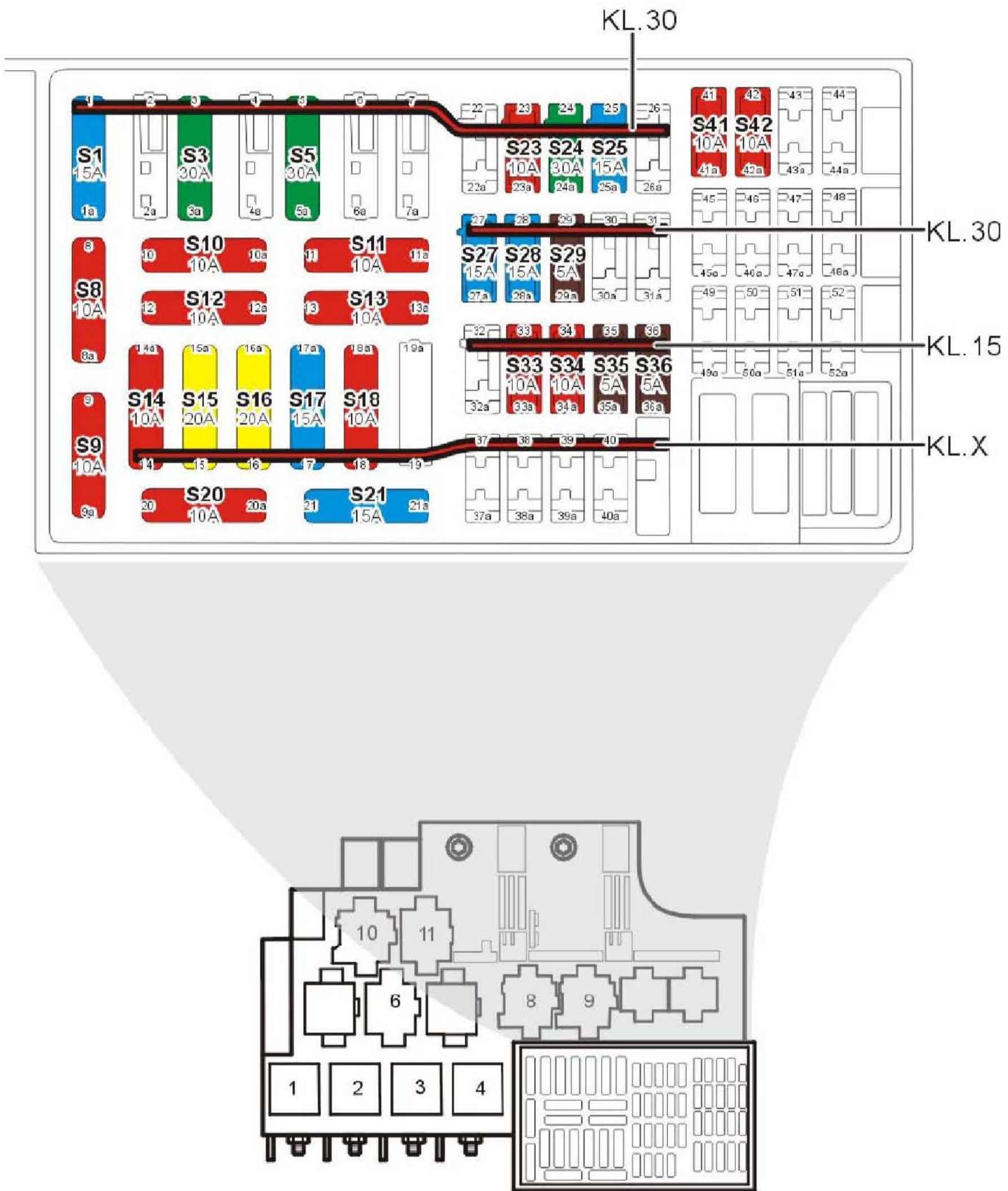
#### 继电器(继电器-保险丝支架)



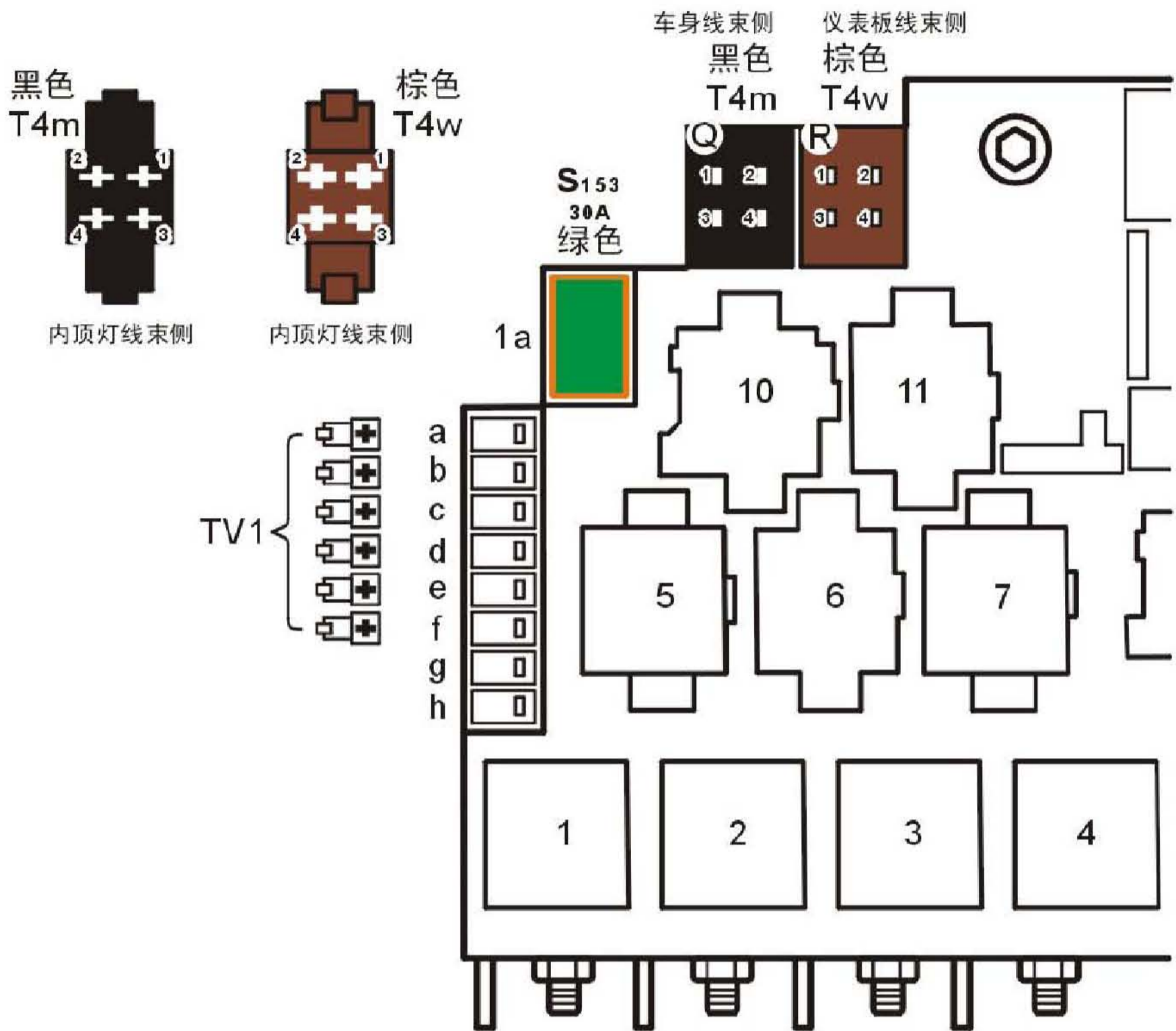
## 正极螺栓连接点(继电器-保险丝支架)



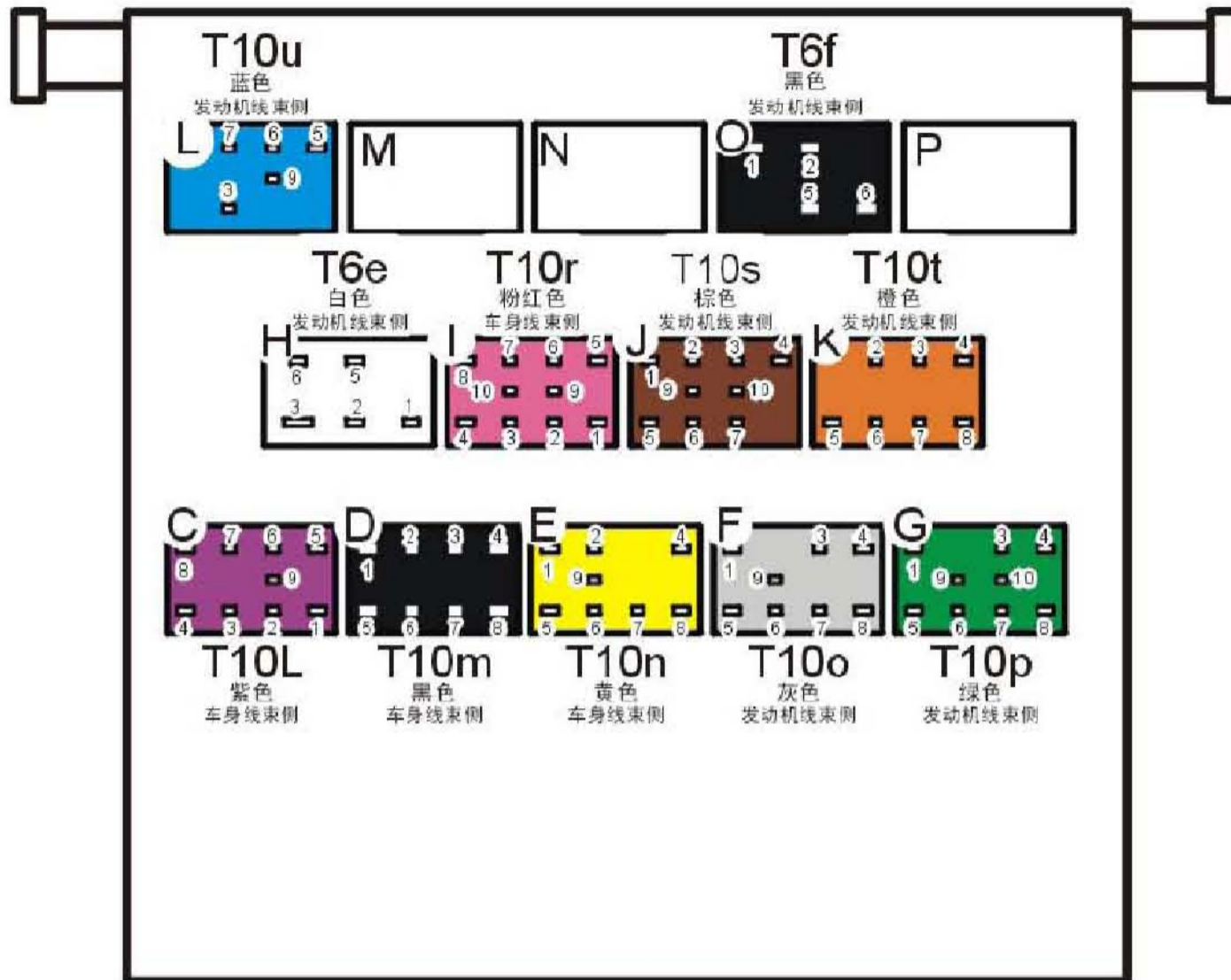
### 保险丝(继电器-保险丝支架)



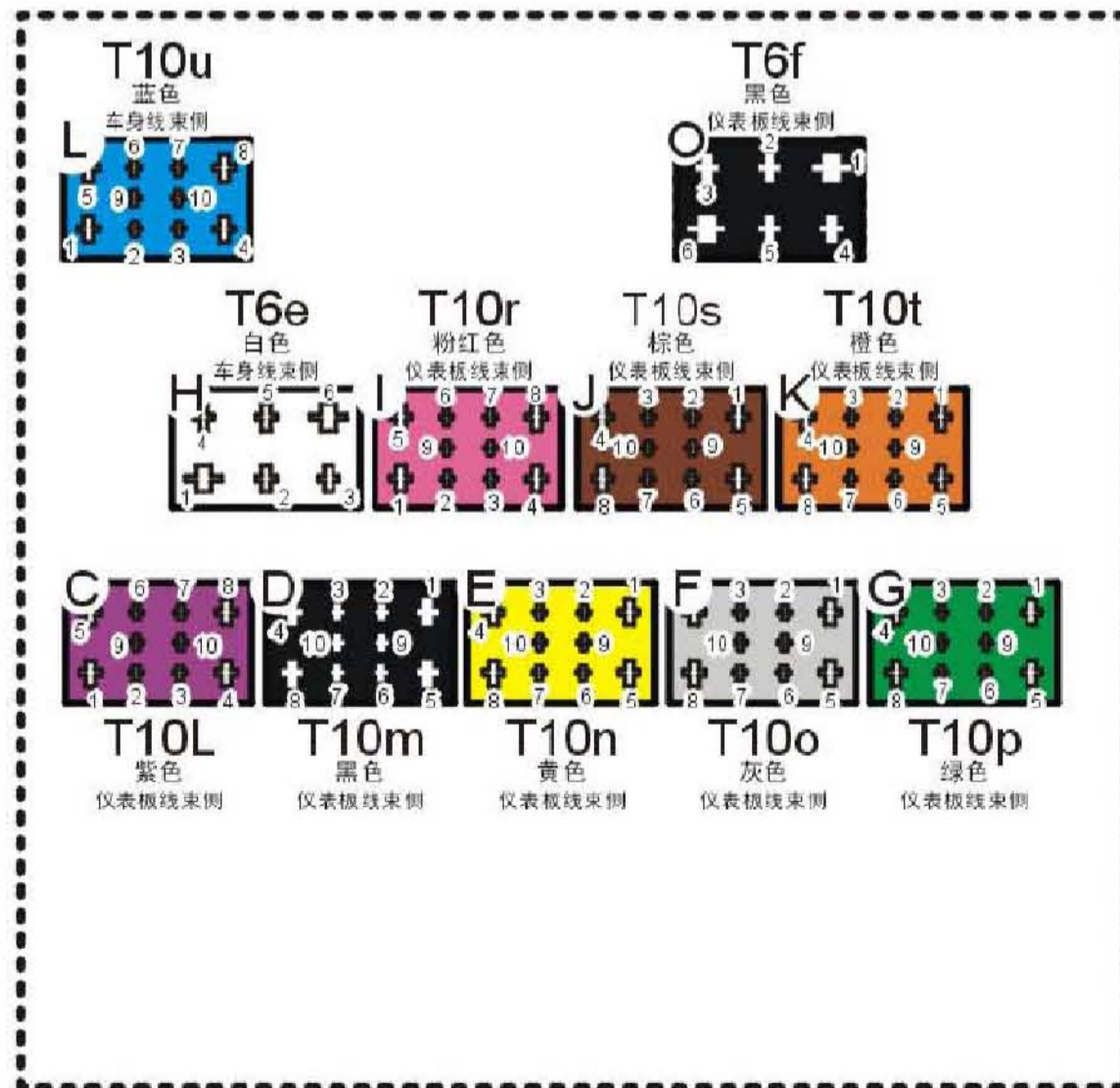
### 继电器-保险丝支架正面插头分布



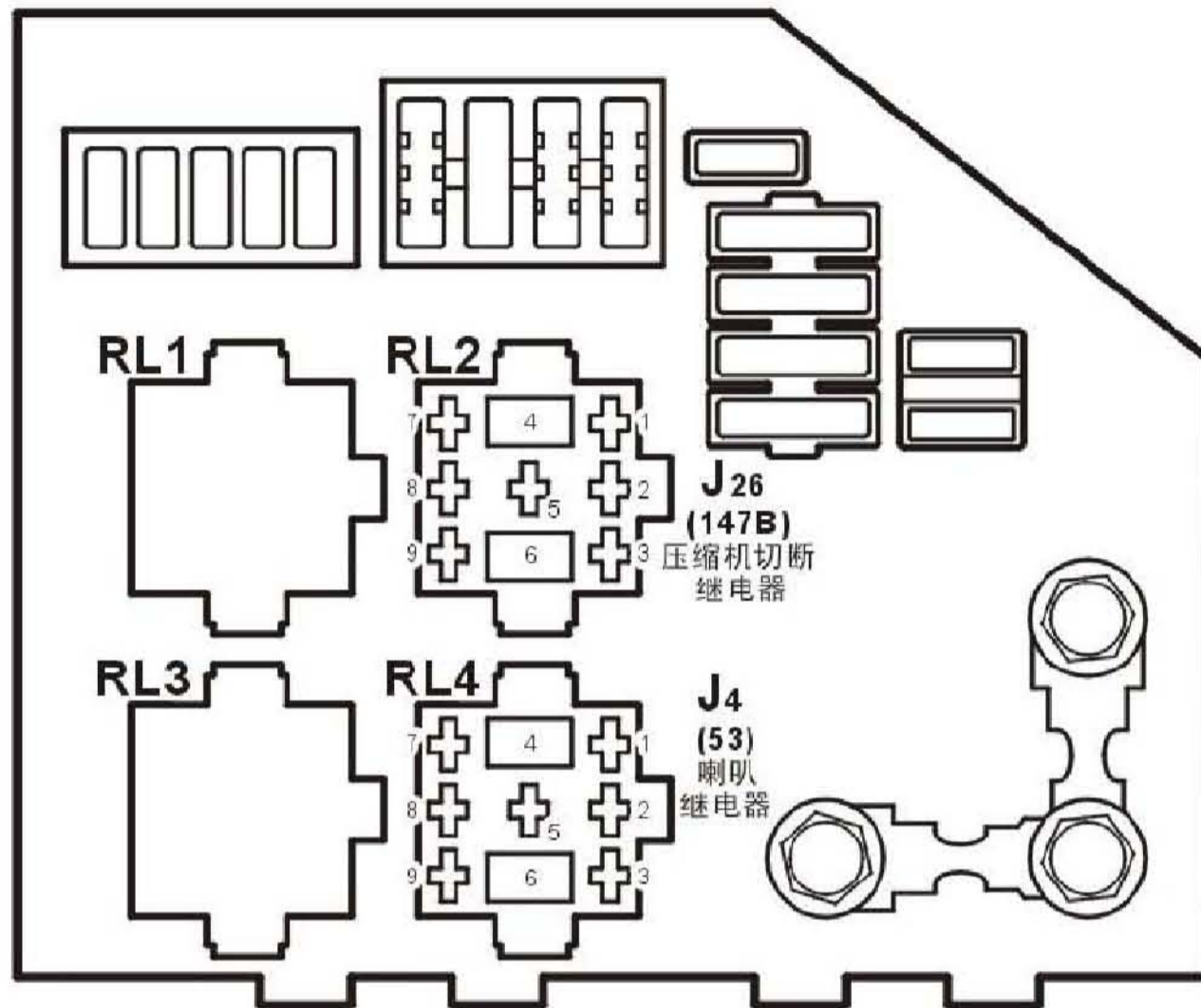
## 继电器-保险丝支架顶面插角分布(继电器-保险丝支架侧)



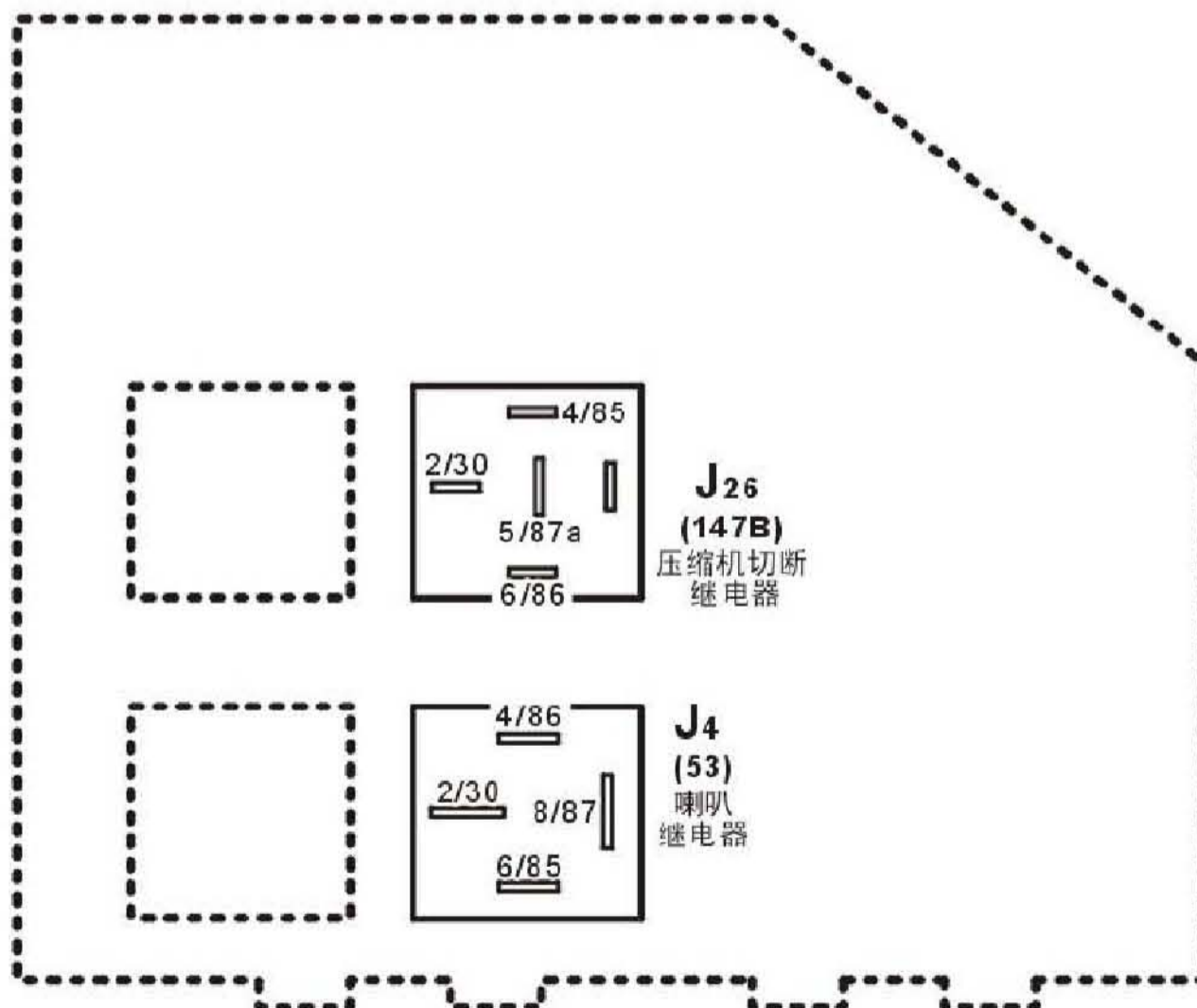
## 继电器-保险丝支架顶面插头分布(线束侧)



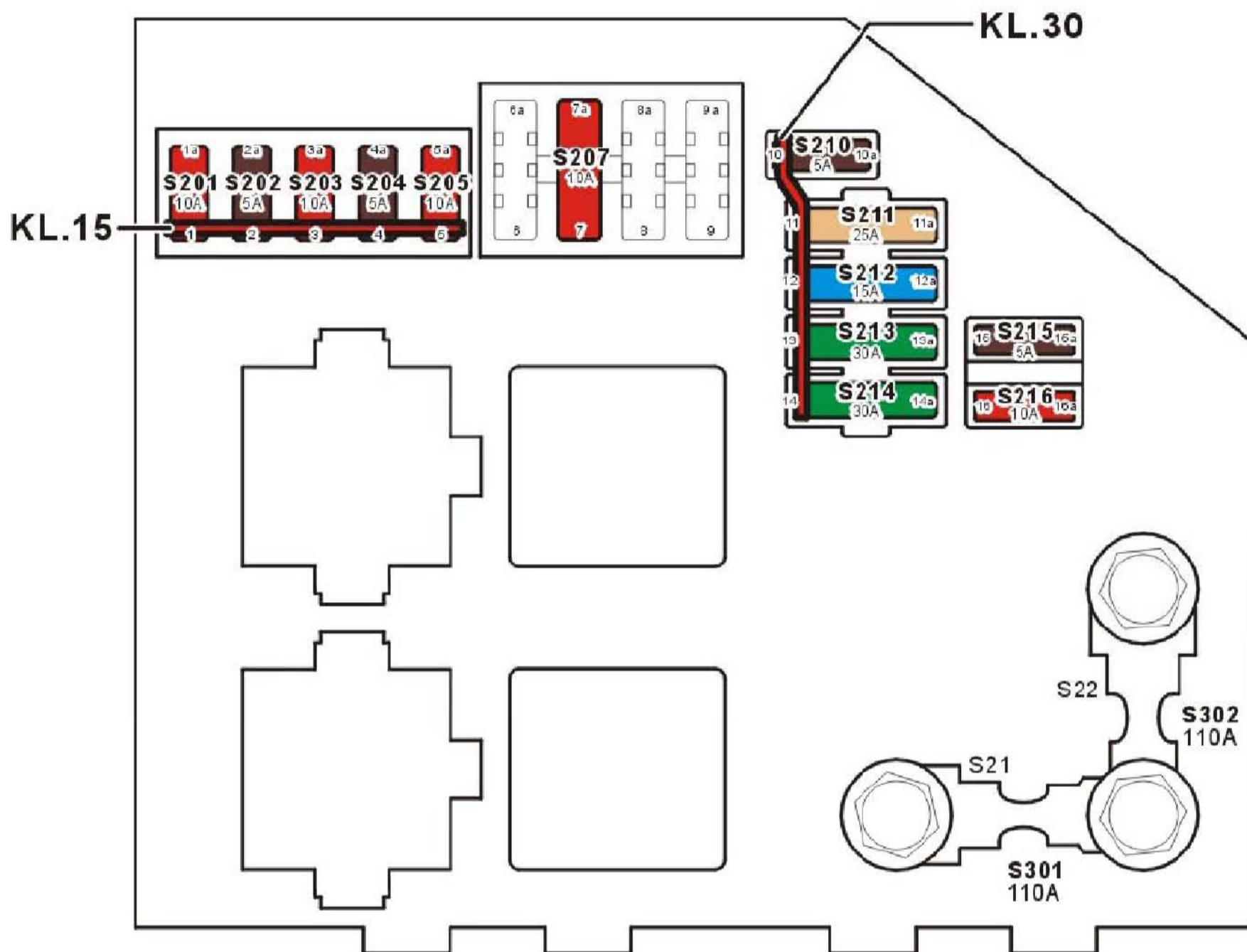
发动机舱继电器-保险丝盒内继电器插角分布(继电器板)



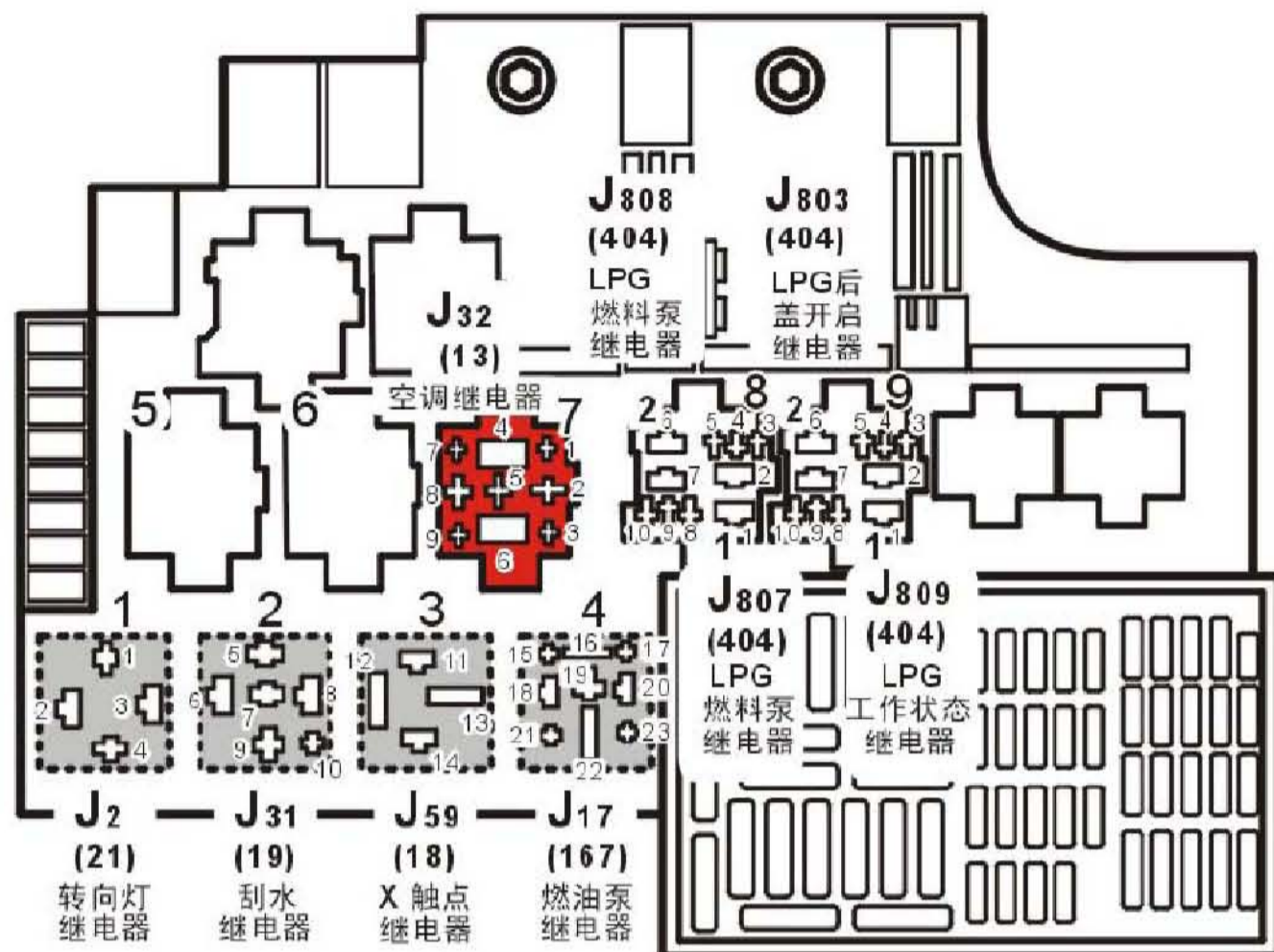
发动机舱继电器-保险丝盒内继电器插角分布(继电器)



### 发动机舱继电器-保险丝盒内保险丝



继电器板(继电器-保险丝支架)



继电器(继电器-保险丝支架)

