

CHRYSLER Diagnostic Software User Guide

CONTENT

1. Usage Brief	1
1.1 About Software	1
1.2 Application Range	1
1.3 Attention	1
2. Instructions	1
2.1 Menu Selection	1
2.1.1 Primary Menu	2
2.1.2 Secondary Menu	2
2.1.3 3 rd Level Menu	3
2.2 Function	6

LAUNCH

1. Usage Brief

1.1 About Software

CHRYSLER Diagnostic Software diagnoses CHRYSLER/DODGE/JEEP Car Model DTC, Data Stream, Actuation Test, Freeze Frame, Special Functions and System Test.

1.2 Application Range

This document is applicable for CHRYSLER diagnostic software developing engineer, technical engineer and customer.

1.3 Attention

With the developing of CHRYSLER software, this document may vary. If any problem found during the usage, please feedback to CHRYSLER diagnostic software developing engineer.

2. Instructions

2.1 Menu Selection

Download the latest CHRYSLER diagnostic software from <http://www.x431.com/> or <http://mycar.dbscar.com/>. After accessing the software, the main interface is as shown in below Figure 1 (Different products may have different interface, but the menus are the same).

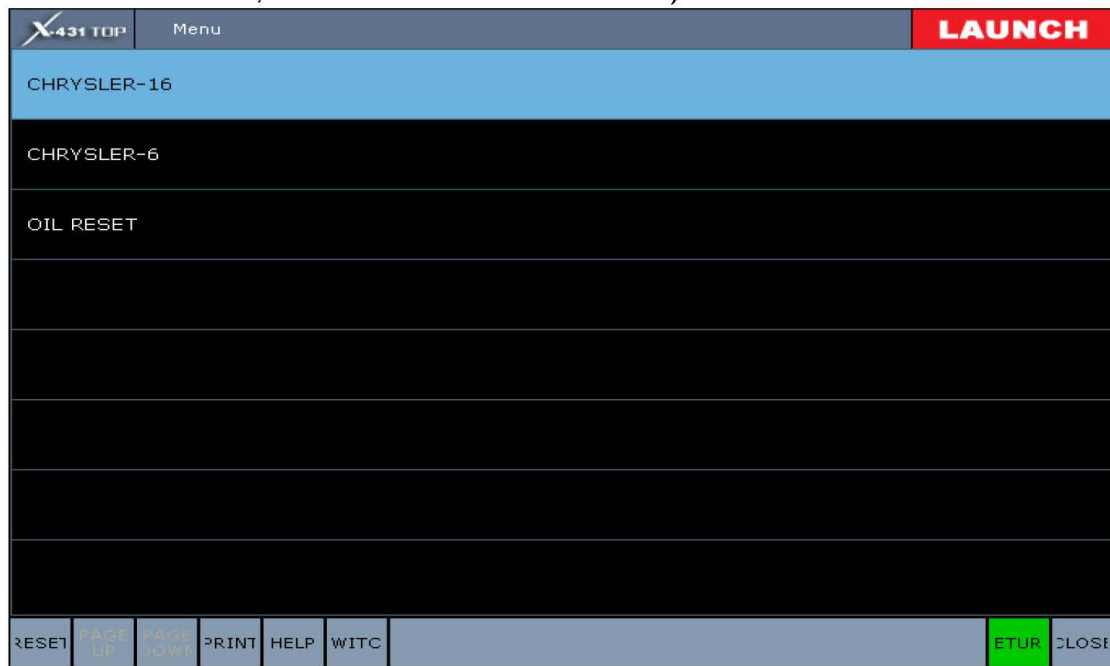


Figure 1

2.1.1 Primary Menu

Menus in the main interface are CHRYSLER-16, CHRYSLER-6 and Oil Reset (See Figure 1).

- 1). CHRYSLER-16: Perform the test with this menu when the car is equipped with standard 16PIN connector.
- 2). CHRYSLER-6: This menu is only for CHRYSLER 6PIN connector and tests only the engine system.
- 3). Oil Reset: This menu guides user how to perform the Engine Oil Reset. Follow the prompts step by step to complete the operation.

2.1.2 Secondary Menu

Here explains Secondary Menu of CHRYSLER-16 only.

After selecting CHRYSLER-16, it displays the Secondary Menu as shown in below Figure 2:



Figure 2

- 1). AUTOMATICALLY SEARCH: It scans the existing ECUs automatically and lists these systems for users to select.
- 2). MANUALLY SELECT: This menu is used to select the specified system directly.

- 3). **SHORT TEST:** This menu is used to scan DTC quickly. It scans all systems, and lists the system which has DTC by one click. User can separately check the system DTC. Furthermore, it provides clearing operation for single DTC and all DTCs.
- 4). **USER FEEDBACK INFORMATION:** When there's any problem during the test, user can use this menu to feedback to software developer, which helps developer to learn the car situation.

2.1.3 3rd Level Menu

At the same time, consider Secondary Menu:

- 1). **AUTOMATICALLY SEARCH:** This menu performs system automatic search and directly displays scanned system menu list when finish. After accessing this menu, 3rd Level Menu is just the system menu.
- 2). **MANUALLY SELECT:** This menu is used to select specified system directly. But it also requires to select CAN protocol or Non-CAN protocol. See below Figure 3. After selecting the protocol type, the submenu is the system menu.
 - A). This menu contains 3 special car models. If the car being tested is PACIFIC(2007-2008), LIBERTY(2006-2007) or VIPER(2006-2008), please apply this special menu to test. These 3 models are handled separately due to their complicated protocol, which contains both CAN and Non-CAN protocols.
 - B). Meanwhile, in this menu, there's an item of **HELP FOR CHOICE MENU AND CONNECTOR**. After clicking, it prompts a message to help user to select menu and connector. See Figure 4.



Figure 3

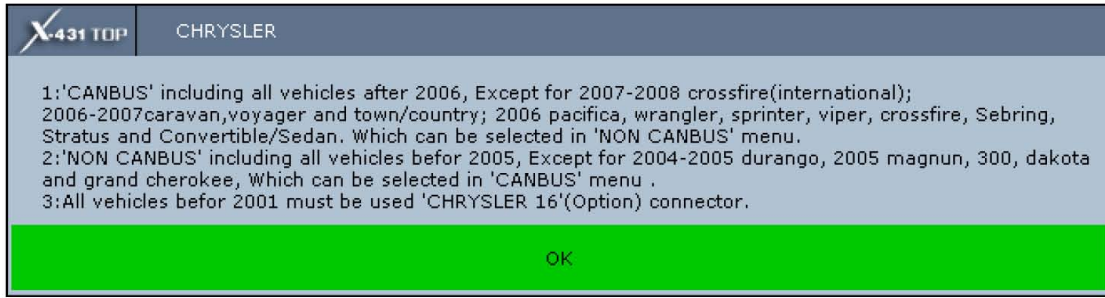


Figure 4

- 3). SHORT TEST: It scans all systems, and lists the system which has DTC by one click. User can separately check the system DTC. Furthermore, it provides clearing operation for single DTC and all DTCs.
 - A). After clicking this menu, it scans DTCs and lists the system which has DTC when finish. The format is: "*DTC*--- System Name". See Figure 5.

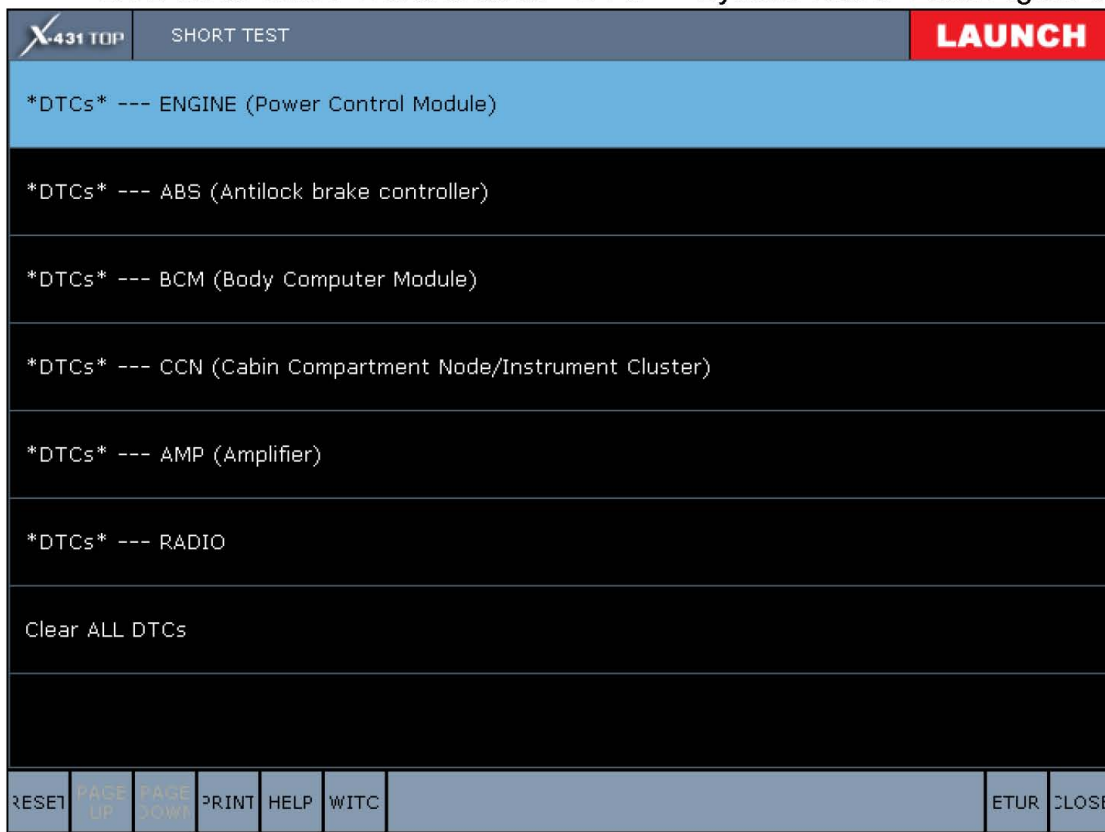


Figure 5

B). Click "Clear ALL DTCs" to clear all listed DTCs. User can obtain detailed DTC information by clicking the system. See Figure 6.

X-431 TOP		Trouble code		LAUNCH	
Fault code		Fault code description		Type	
P0452		Evaporative Emission System Pressure Sensor/Switch Low		Pending	
P0453		Evaporative Emission System Pressure Sensor/Switch High		Pending	
P0311		Cylinder 11 Misfire Detected		Pending	
PAGE UP		PAGE DOWN		PRINT	
		HELP		ETUR	

Figure 6

C). After checking the detailed DTC information, click "RETURN", it appears a prompt box asking user whether to clear this DTC or not. See Figure 7.

X-431 TOP		Trouble code		LAUNCH	
Fault code		Fault code description		Type	
P0452		Evaporative Emission System Pressure Sensor/Switch Low		Pending	
P0453					
P0311					
PAGE UP		PAGE DOWN		PRINT	
		HELP		ETUR	

X-431 TOP SHORT TEST

ARE YOU SURE TO CLEAR TROUBLE CODE?

YES NO

Figure 7

- 4). USER FEEDBACK INFORMATION: Prompt box may be different depending on the car whether it applies CAN protocol or not.
- A). If it is CAN protocol, the prompt box is as shown in Figure 8. This prompt box contains some key words for us to simulate the car environment, thus it helps us to solve the problem. .

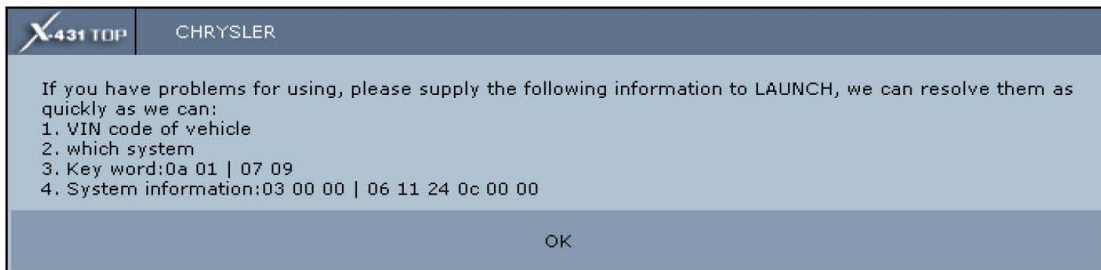


Figure 8

- B). If it is Non-CAN protocol, the prompt box is as shown in Figure 9.

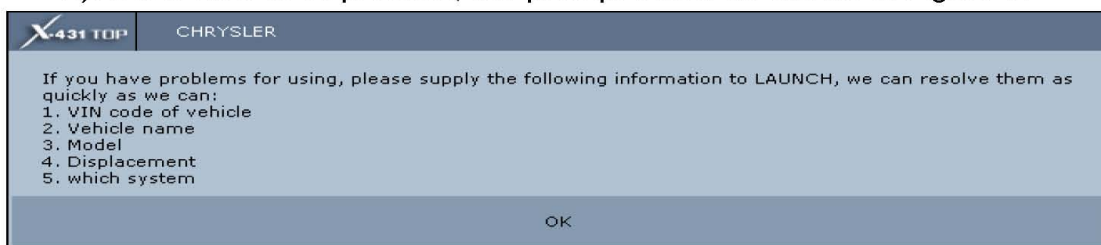


Figure 9

2.2 Function

After selecting the specified system in system menu, user comes to the Function Menu (See Figure 10).

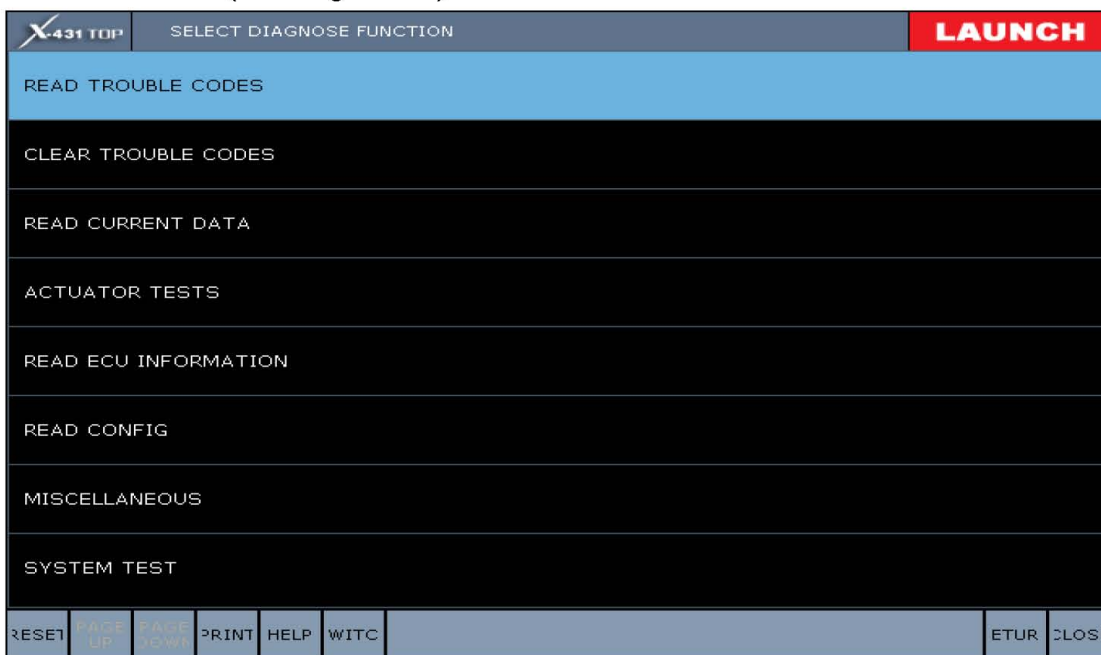


Figure 10

- 1). READ TROUBLE CODES: Read DTC;
- 2). CLEAR TROUBLE CODES: Clear DTC;
- 3). READ CURRENT DATA: Read Data Stream;
- 4). ACTUATOR TESTS: Actuation Test;
- 5). READ ECU INFORMATION: Read Version Information;
- 6). READ CONFIG: Read Configuration Information;
- 7). MISCELLANEOUS: Special Functions;
- 8). SYSTEM TEST: System Test.

Above functions may not exist at the same time due to different system and different system mode. It depends on car configuration.

LAUNCH