

SUZUKI Test Instructions

CONTENT

1. Technical Terms.....	1
2. Document Brief.....	1
2.1 About Document	1
2.2 Application Range.....	1
2.3 Attention	1
3. Content	1
3.1 Content Description.....	1
3.1.1 Types of Diagnostic Socket and Protocol.....	1
3.1.2 Product Types and Connector Selection	2
3.1.3 Software Menu and Selection	2

LAUNCH

1. Technical Terms

- 1). PCM: Powertrain Control Module (known as Engine system)
- 2). RCM: Restraint Control Module (known as Airbag)
- 3). ABS/TCS: Anti-lock Brake Module/Traction Control System
- 4). ICM: Instrument Control Module
- 5). IPMS: Tire Pressure Monitor System
- 6). SSPS: Speed Sensitive Power Steering System
- 7). HVAC: Heating, Ventilation and Air Conditioning
- 8). BCM: Body Control Module
- 9). ESP: Electronic Stability Program

2. Document Brief

2.1 About Document

This document offers details about how to use SUZUKI Diagnostic Software to test all SUZUKI models except heavy duty trucks.

2.2 Application Range

It's applicable for all SUZUKI models covered by software of Japanese, North American and Non-North American markets.

2.3 Attention

For the moment, SUZUKI software cannot be used to test SUZUKI heavy duty vehicle or truck.

3. Content

3.1 Content Description

3.1.1 Types of Diagnostic Socket and Protocol

Most of Suzuki models are with 16PIN Diagnostic Socket. See Figure 2-1-1. Protocol types include KWP (fast & address), CAN (single & double), ISO and DENSO, etc.

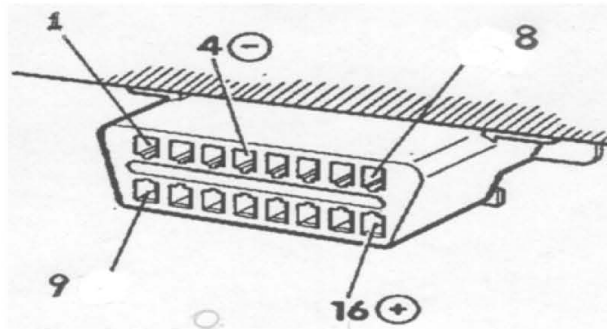


Figure 2-1-1 Diagnostic Socket Types

3.1.2 Product Types and Connector Selection

- 1). For X-431 products, it is recommended to use SUPER 16 Connector as standard.
 - A). CANBUS protocol requires CANBUS II or SUPER 16 Connector.
 - B). Non-CANBUS protocol requires OBD II – 16C Connector or SUPER 16 Connector (do not use SMART OBD 16 Connector).
- 2). For X-431 GX3/MASTER/NCP/3G/GDS/X-431 IV products, select SMART OBDII-16E Connector.
- 3). For X-431 DIAGUN products with 16PIN Diagnostic Socket, select X-431 DIAGUN Connector.
- 4). For X-431 Diagun III/X-431 Pad, select DBSCar Connector.

3.1.3 Software Menu and Selection

- 1). Software Menu
 - A). Suzuki Software contains Japanese Market and **Other than Japan**. See Figure 2-1-3-1. Other than Japan further include two areas: North American and **Other than North American**. (See Figure 2-1-3-2.)

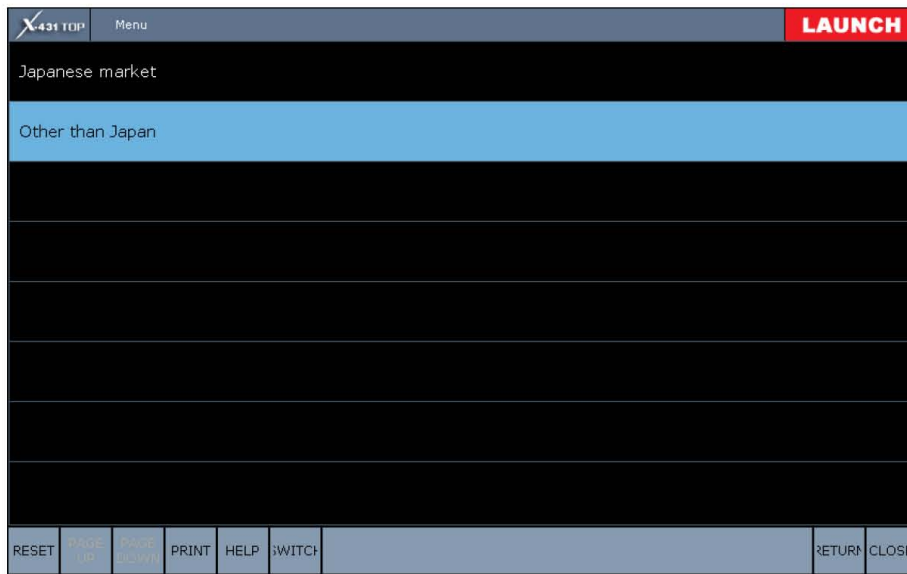


Figure 2-1-3-1 Car Model Area Menu

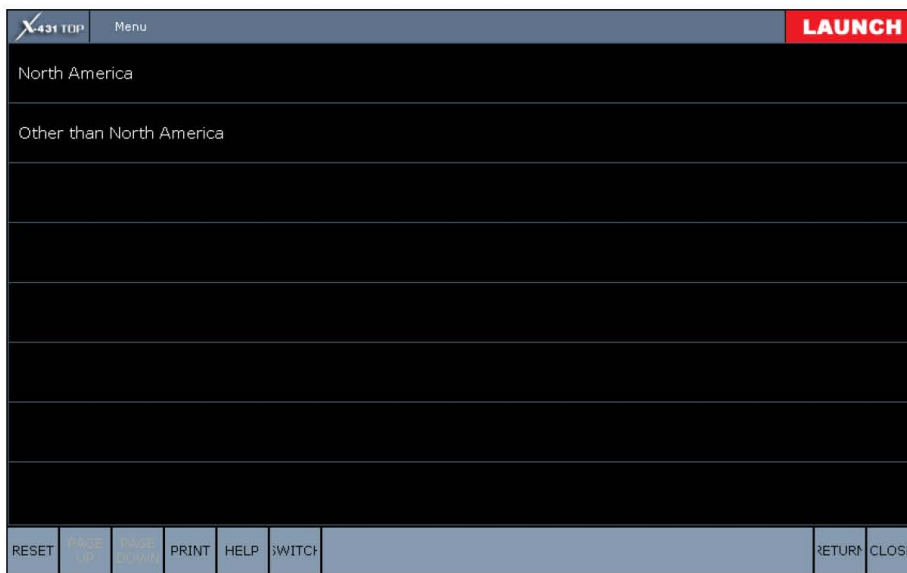


Figure 2-1-3-2 Non-Japan Market Menu

2). Menu Selection

A).Japanese Market (See Figure 2-1-3-2-1) accessing way is through ID search. After selecting different module, system will automatically search car entry ID. If the software of this ID has been developed, it displays ID (See Figure 2-1-3-2-3). After clicking OK, it displays the available functions (See Figure 2-1-3-2-4). If the software has not been developed yet, it shows a prompt box (See Figure 2-1-3-2-5). Please save this information and submit to dealer. We will develop this ID related functions as soon as possible.

NOTE: It offers both new and old modes when entering the software. The old mode was developed in earlier time. Please select new mode to test. If there's no new mode, or the car model is old, please

select old mode to test (See Figure 2-1-3-2-2).

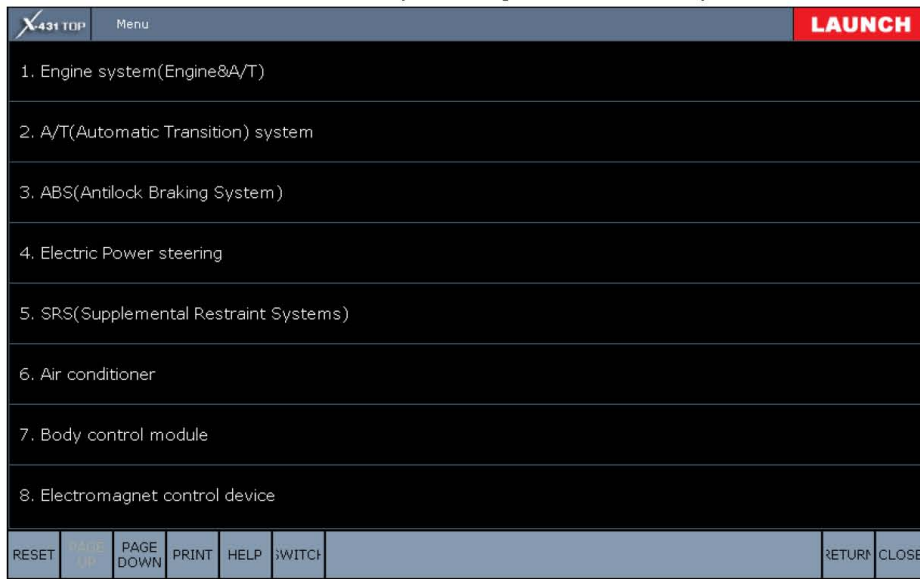


Figure 2-1-3-2-1 Japanese Market Module Menu

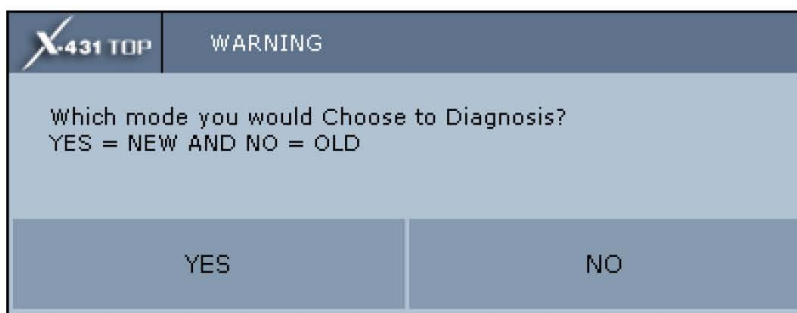


Figure 2-1-3-2-2 Prompt Box for New and Old Modes

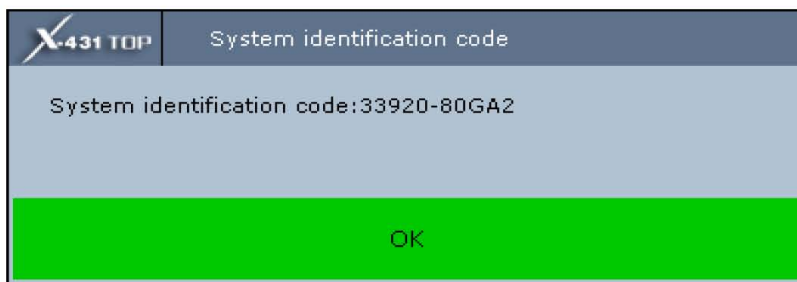


Figure 2-1-3-2-3 Entry ID

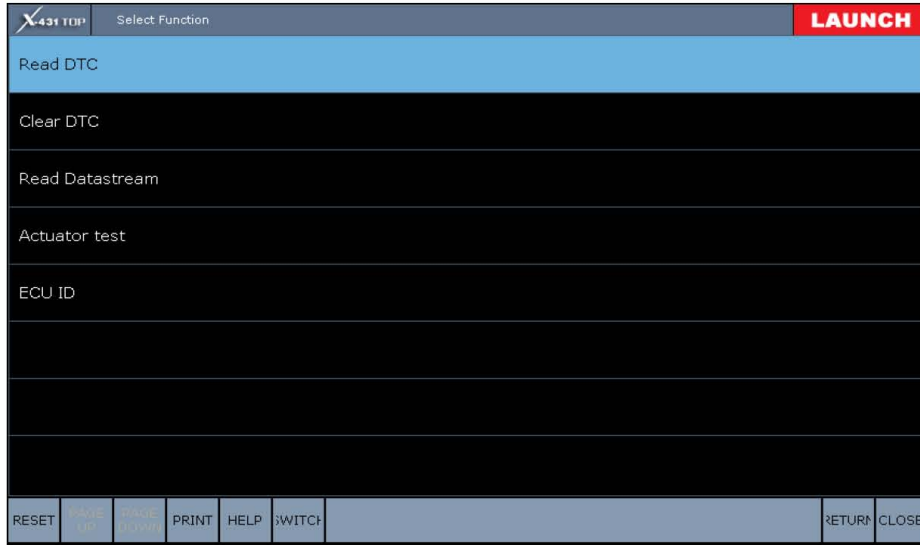


Figure 2-1-3-2-4 Menu of Function Selection

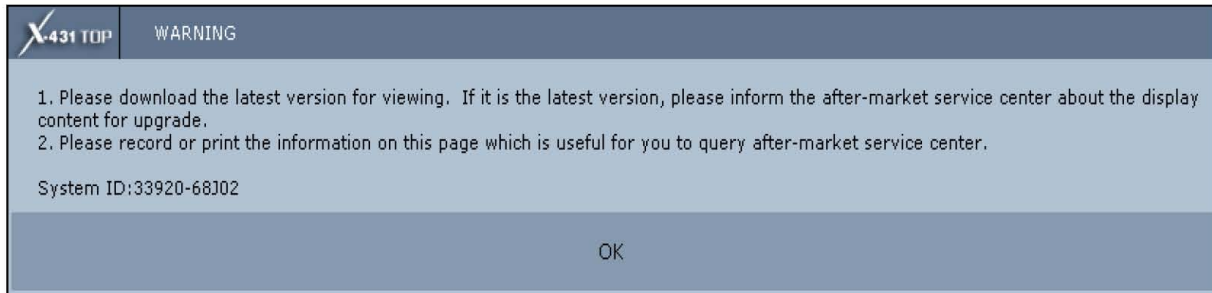


Figure 2-1-3-2-5 Prompt Box of Undeveloped ID

B).Other than Japan (See Figure 2-1-3-2-6 & Figure 2-1-3-2-7): Select the detailed menu of Car Model, Model Year to enter. Please do the test according to the actual car type and module.



Figure 2-1-3-2-6 Menu of North American

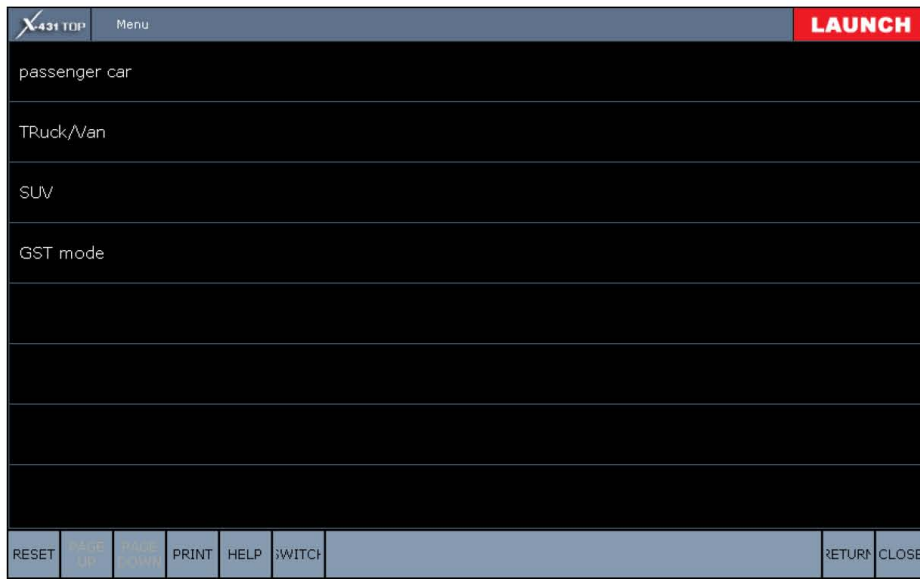


Figure 2-1-3-2-7 Menu of Other than North American

LAUNCH