

# GM Diagnostic Software Menu Selection

## CONTENT

1. Brief .....	1
1.1 About Document .....	1
1.2 Application Range .....	1
2. VIN Code and Menu Selection .....	1
2.1 VIN Code Analysis .....	1
2.1.1 VIN Code Digit Explanation .....	1
2.2 Menu Selection .....	2

LAUNCH

# 1. Brief

## 1.1 About Document

This document briefly introduces the VIN code of GM car models and how to select GM diagnostic software menu according to the VIN code.

## 1.2 Application Range

It's applicable for all GM models.

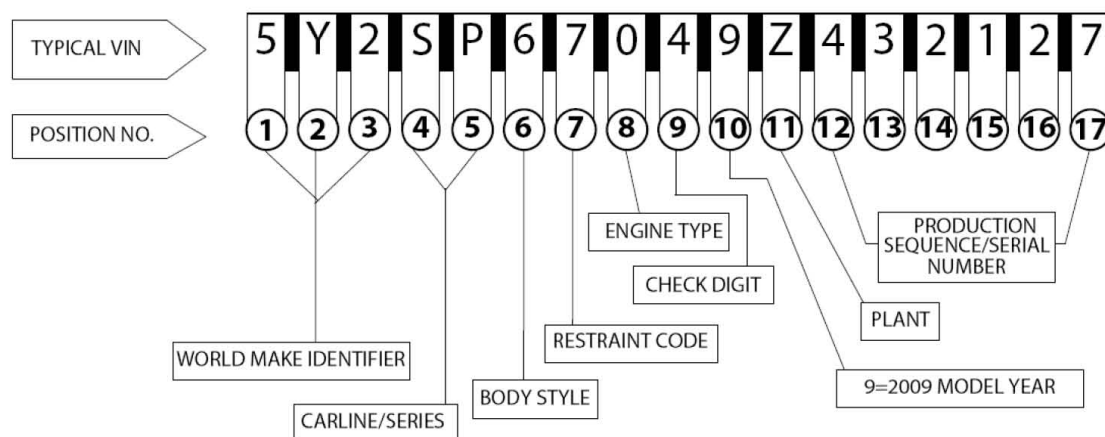
# 2. VIN Code and Menu Selection

## 2.1 VIN Code Analysis

VIN is the short form of Vehicle Identification Number. As stated in SAE Standard: VIN consists of 17 digits of characters. Thus, it's also known as 17-digit Code. VIN contains the information of manufacturer, year, car model, body style and code, engine model and plant, etc. It is a unique car ID. For GM car models, VIN code usually locates on left side of instrument panel, left bottom side of front windshield or on the door locking column.

VIN code can be separated into 3 parts: first part (1-3 characters) is World Make Identifier (WMI), second part (4-9) is Vehicle Descriptor Section (VDS) and last part (10-17) is Vehicle Identifier Section (VIS).

### 2.1.1 VIN Code Digit Explanation



First Character of VIN Code: Country of Manufacturer

1,4,5	USA	6	Australia	L	China
2	Canada	9	Brazil	J	Japan
3	Mexico	K	S. Korea	W	Germany

**2<sup>nd</sup> Character: Manufacturer Code**

1	Chevrolet	4	Buick	7	GM Canada
2	Pontiac	5	Pontiac	8	Saturn
3	Oldsmobile	6	Cadillac	L	Daewoo

G=All GM brands, including Buick, Cadillac, Chevrolet, Oldsmobile, Pontiac and Saturn.

3<sup>rd</sup> Character: Manufacturer division code or car brand

4<sup>th</sup> Character: Platform

5<sup>th</sup> Character: Platform series code, affected by 3<sup>rd</sup>/4<sup>th</sup> character. Different brand has different definition.

8<sup>th</sup> Character: Engine Type

10<sup>th</sup> Character: Model Year

M	1991	X	1999	7	2007
N	1992	Y	2000	8	2008
P	1993	1	2001	9	2009
R	1994	2	2002	A	2010
S	1995	3	2003	B	2011
T	1996	4	2004	C	2012
V	1997	5	2005		
W	1998	6	2006		

Take 5Y2SP67049Z43217 for example. This VIN code refers to a 2009 Pontiac car produced in America.

## 2.2 Menu Selection

GM diagnostic software organizes its menu on the basis of VIN code. User can select the menu according to the 3<sup>rd</sup>, 4<sup>th</sup>, 5<sup>th</sup>, 8<sup>th</sup> and 10<sup>th</sup> characters of VIN code to perform the test. General Procedure:

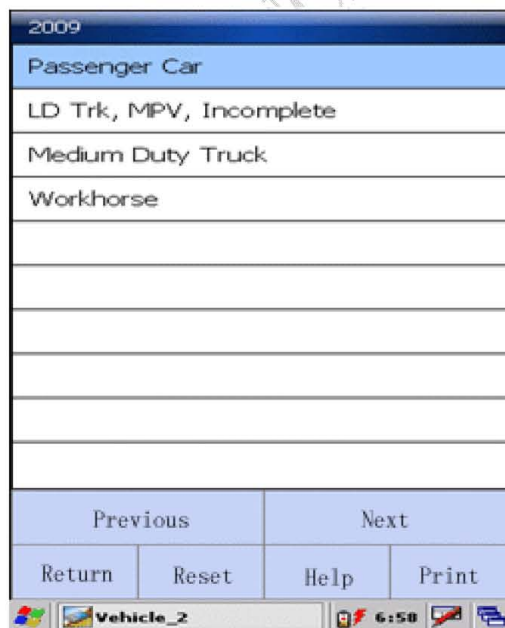
- 1). Select model year according to the 10<sup>th</sup> character.
- 2). Select body style (passenger car, truck, RV).
- 3). Select brand (Chevrolet, Pontiac, Oldsmobile, Buick, etc.).
- 4). If it's passenger car, select platform series according to 4<sup>th</sup> character. If it's truck, please select platform series according to 5<sup>th</sup> character.
- 5). Select car model (if exist).
- 6). Select engine type according to 8<sup>th</sup> character, the number in [ ].

7). Take 5Y2SP67049Z43217 for example:

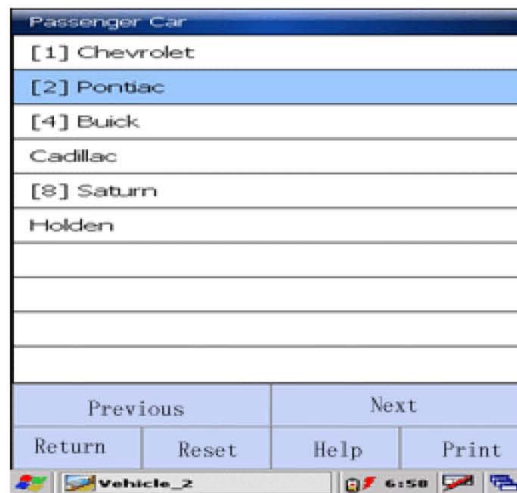
A). Select 2009 as model year according to the 10<sup>th</sup> character.



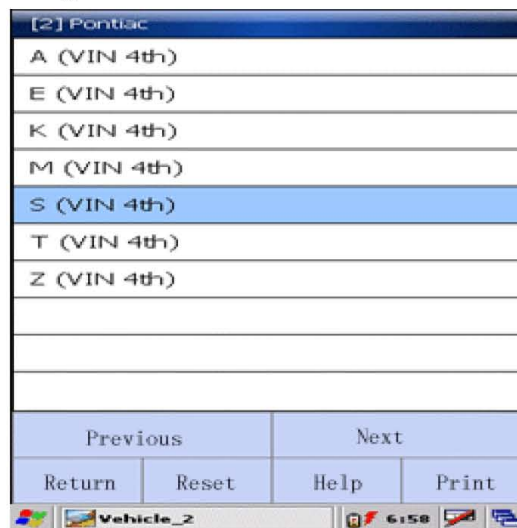
B). Select passenger car.



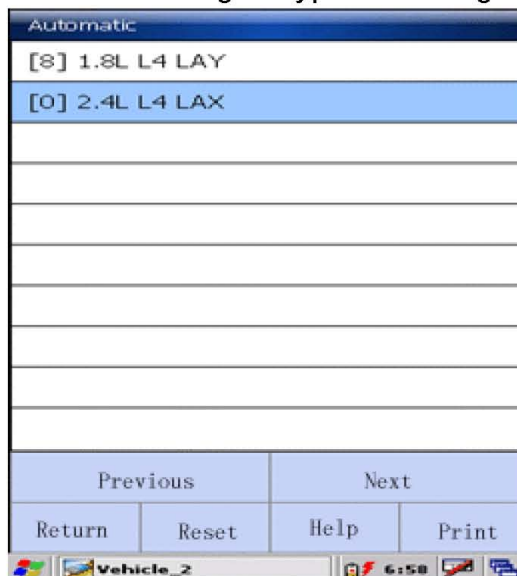
C). Select Pontiac.



D). Select S according to the 4<sup>th</sup> character.

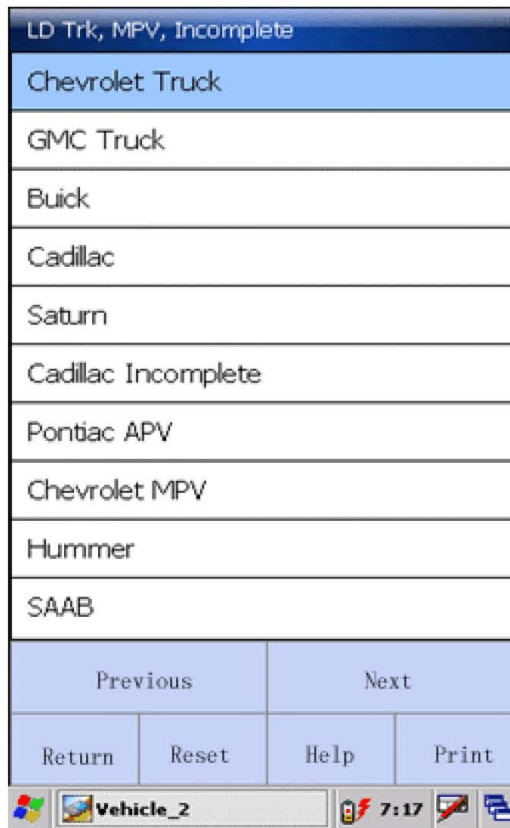


E). Select [0]2.4 L L4 LAX as engine type according to 8<sup>th</sup> character "0".





C). Select Chevrolet Truck.



D). Select R according to the 5<sup>th</sup> character to test each system.

