

BMW Diagnostic Software User Guide

CONTENT

1. Usage Brief	1
1.1 About Software	1
1.2 Application Range	1
1.3 Attention	1
2. Instructions	1
2.1 Menu	1
2.1.1 AUTOMATICALLY SEARCH	2
2.1.2 MANUALLY SELECT	2
2.1.3 Coding/Program	4
2.1.4 CBS Reset	5
2.2 Function	6

LAUNCH

1. Usage Brief

1.1 About Software

BMW Diagnostic Software diagnoses BMW Car Model Automatic Scan as well as DTC, Data Stream, Actuation Test, Special Functions, Coding and Car Memory Function.

1.2 Application Range

This document is applicable for BMW diagnostic software developing engineer, technical engineer and customer.

1.3 Attention

With the developing of BMW software, this document may vary. If any problem found during the usage, please feedback to BMW diagnostic software developing engineer.

2. Instructions

2.1 Menu

After accessing BMW Diagnostic Software, menus in the main interface are: Automatically Search, Manually Select, Coding/Program and CBS Reset. (See Figure 1) .



Figure 1

2.1.1 AUTOMATICALLY SEARCH

BMW cars are classified into X3 Series and Non X3 Series (See Figure 2). It scans all existing systems automatically without selection of corresponding chassis, and lists all these systems for users to select.



Figure 2

2.1.2 MANUALLY SELECT

This menu is used to select chassis directly and access specified system.

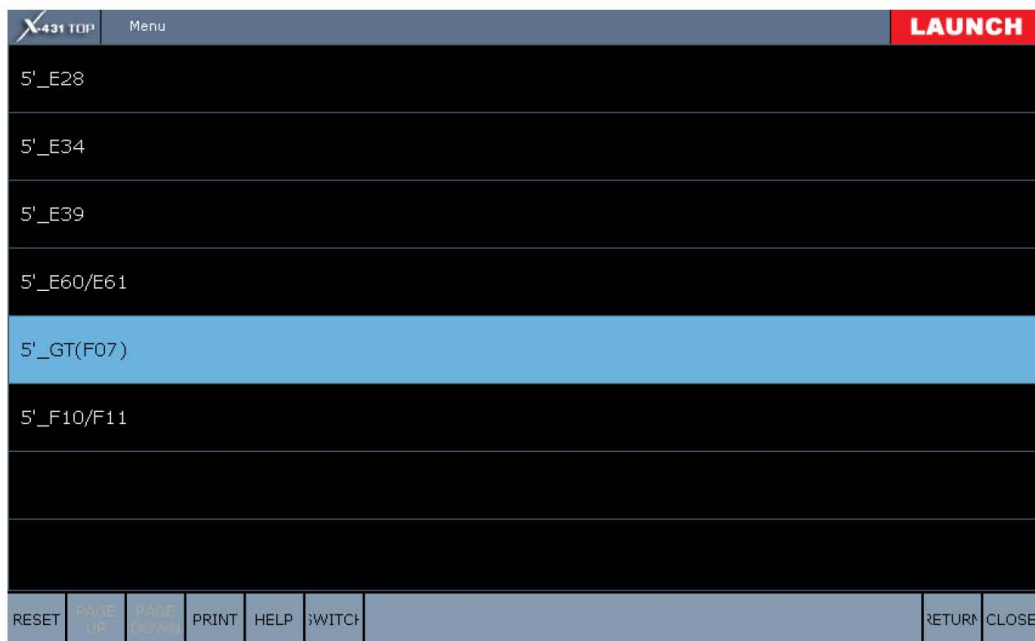


Figure 3

After selecting corresponding car model and chassis (See Figure 3), it displays four submenus: Drive, Chassis, Body and Short Test (See Figure 4). In Drive, Chassis and Body, there are detailed car systems.

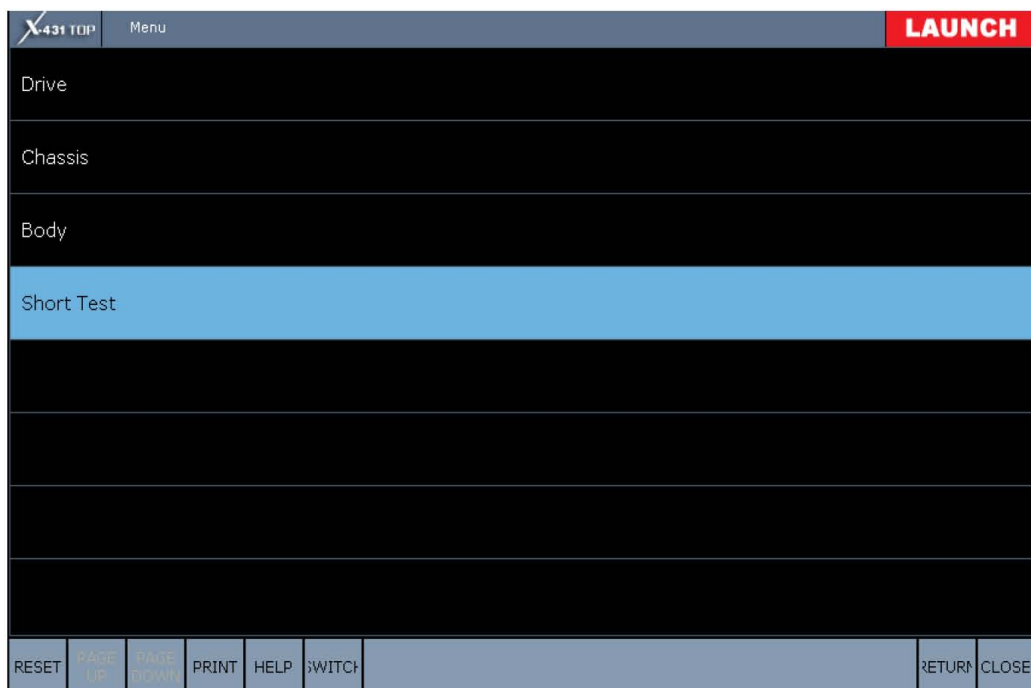


Figure 4

Short Test is used to scan systems quickly. It scans all systems and DTCs, and displays corresponding lists by one click. If there's no DTC with the scanned system, it displays "! – System Name". Otherwise, it displays "? – System Name" (See Figure 5). For the undeveloped system, it prompts a note (See Figure 6).



Figure 5

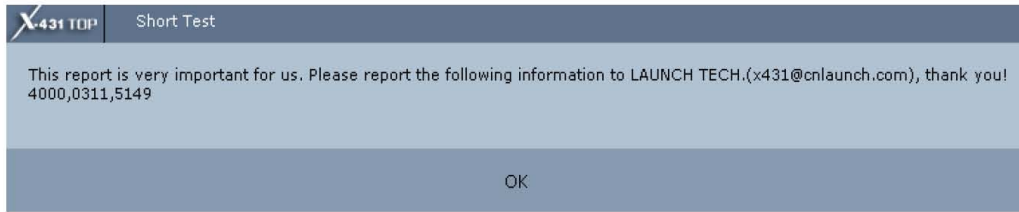


Figure 6

2.1.3 Coding/Program

This menu contains Coding for different car model chassis, Car Key Memory, Maintenance and Service Function (See Figure 7).

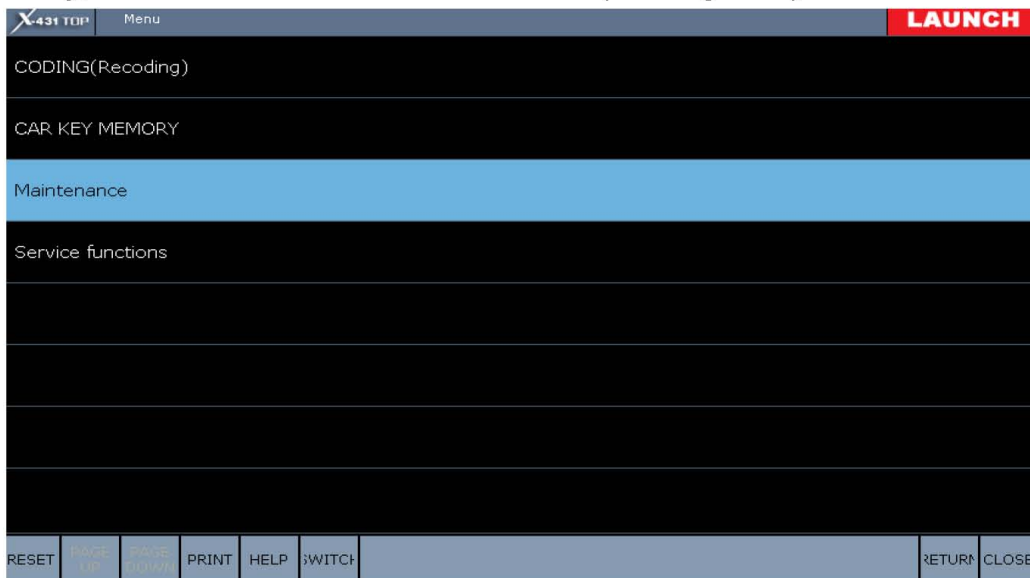


Figure 7

- 1). CODING: According to the replacement of different ECU, select relative system to code (See Figure 8). Different car data display different system lists.

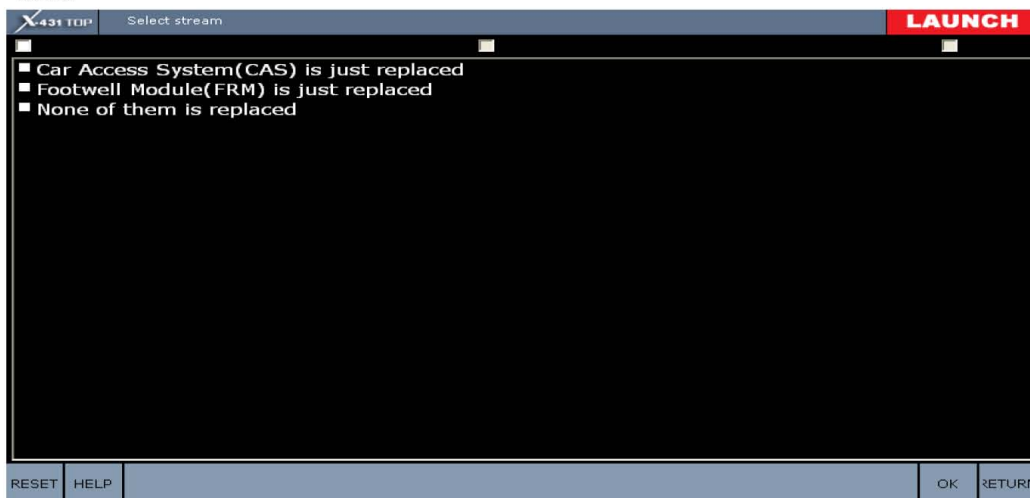


Figure 8

- 2). Car Key Memory: With this menu, user can select specified system to enter and read this system related car key memory (See Figure 9) .

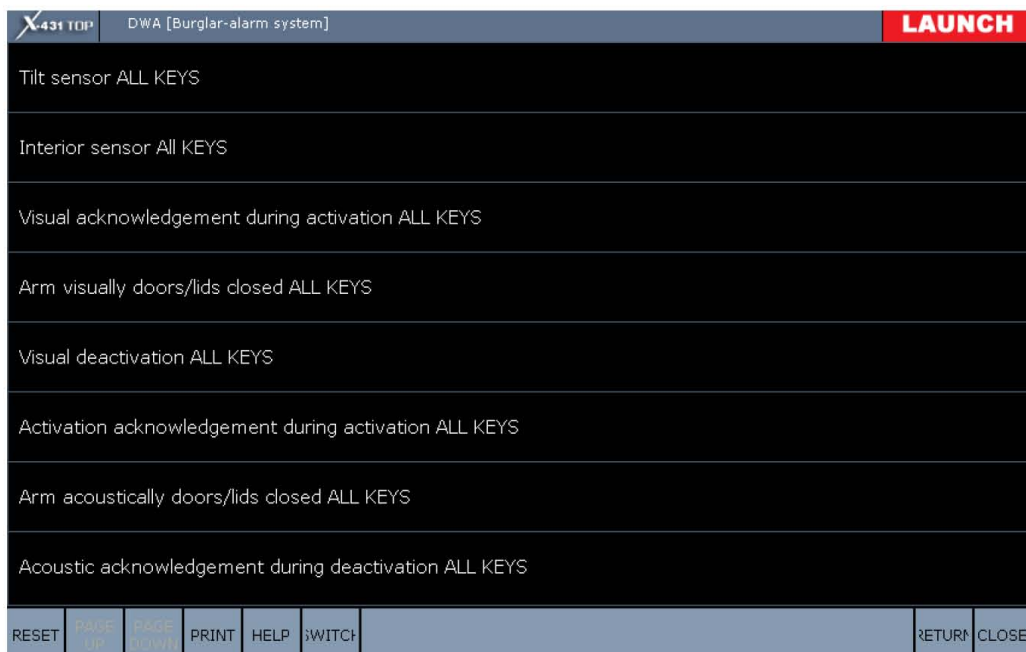


Figure 9

- 3). Maintenance and Service Function: This menu contains some special functions, such as Steering Angle Matching, CBS Reset and CBS Correct, etc.

2.1.4 CBS Reset

This menu guides user how to operate the reset for different car model chassis (See Figure 10). Select corresponding function and follow the prompts step by step.

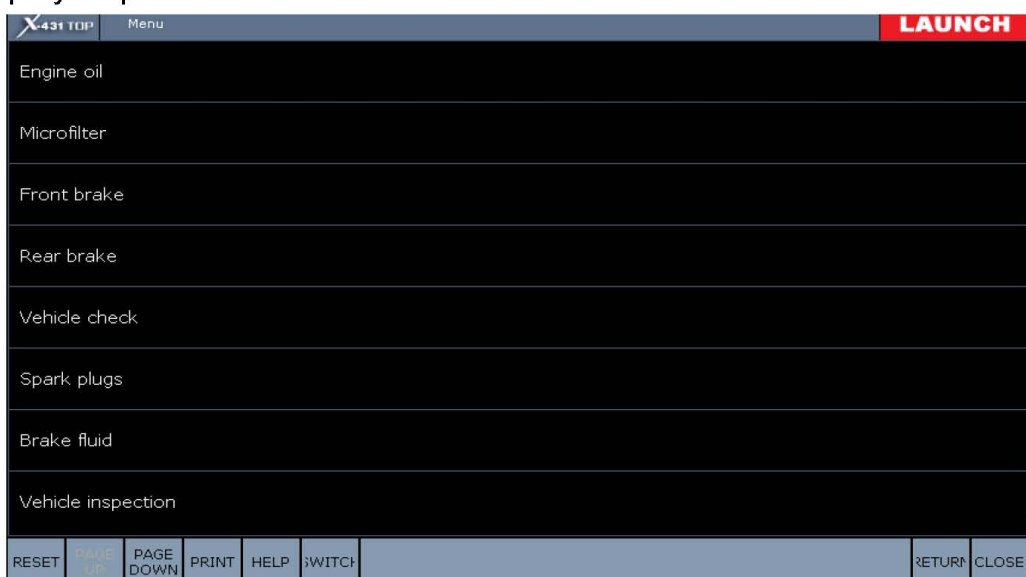


Figure 10

2.2 Function

After selecting the specified system in system menu, user comes to the Function Menu (See Figure 11).



Figure 11

- 1). Identification: Read Version Information;
- 2). Read Fault Memory: Read DTC;
- 3). Clear Fault Memory: Clear DTC;
- 4). Data Stream: Read Data Stream;
- 5). Component Activation: Actuation Test;
- 6). Service Function: Special Functions.

Above functions may not exist at the same time due to different system and different system mode. It depends on car configuration.