

JAGUAR Diagnostic Software User Guide

CONTENT

1. Software Brief	1
2. Software Procedure	1
2.1 Search Mode	2
2.2 Previous Mode	4

LAUNCH

1. Software Brief

This document introduces how to use Jaguar diagnostic software to test different Jaguar car models.

Currently, the latest Jaguar diagnostic software version V18.11 can test Jaguar S-type, X-type, XJ, XF and XK before 2012 (See details in car model coverage table). Functions include Read DTC, Clear DTC, Read Data Stream and Special Function Match. There are two diagnostic modes: Search Mode and Previous Mode.

2. Software Procedure

All Jaguar models use 16PIN diagnostic socket (see Figure 1). It is usually located in the upper area of acceleration pedal.

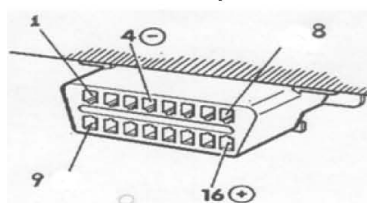


Figure 1

Before testing the car, operator shall learn the basic car information.

- Car Model: Learn car model(S-type, X-type, XJ, XF and XK) by car appearance or by the mark in car tail.
- Model Year: Read the 10th digit of VIN code to learn the car model year.
- Engine Type: Learn engine type (fuel type, air intake method and displacement) by the mark on engine or by the mark in car tail.

Start the test after learning above basic information. Before the test, turn key to ON position. If the test takes long time, please pay attention to the battery voltage. When battery voltage is low, it would be better to start engine to charge it.

Jaguar Diagnostic Software has two diagnostic modes: Search Mode and Previous Mode. See Figure 2.

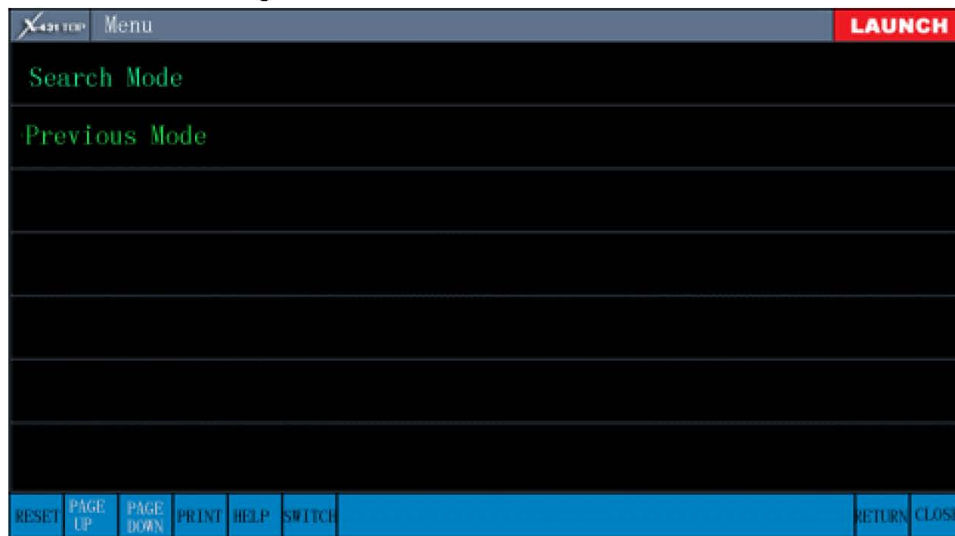


Figure 2 Two Diagnostic Modes

2.1 Search Mode

Search Mode is a fast test mode. Operator can obtain the car system list fast and accurately when he selects Search Model. It is recommended to use Search Mode to perform the test. The procedure of Search Mode is shown in below figures.

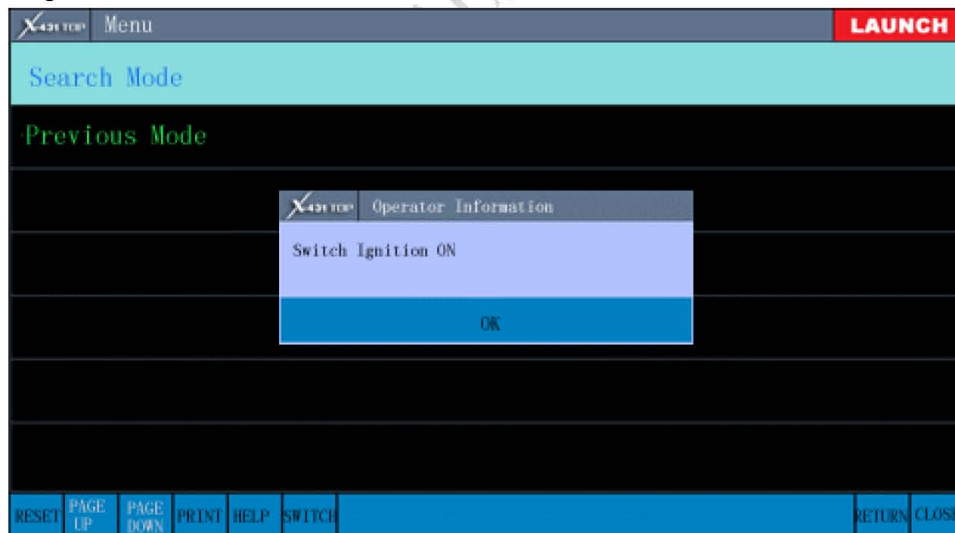


Figure 3 Select Search Mode

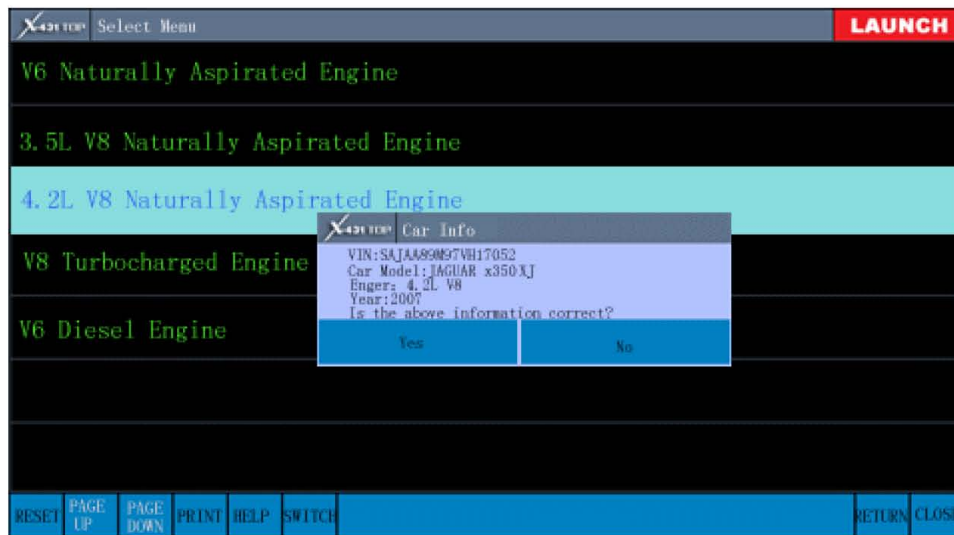


Figure 4 Basic Car Information

Operator shall check whether the basic car information is the same as it's displayed. If not, click NO to read again. If still failed, return to select Previous Mode.

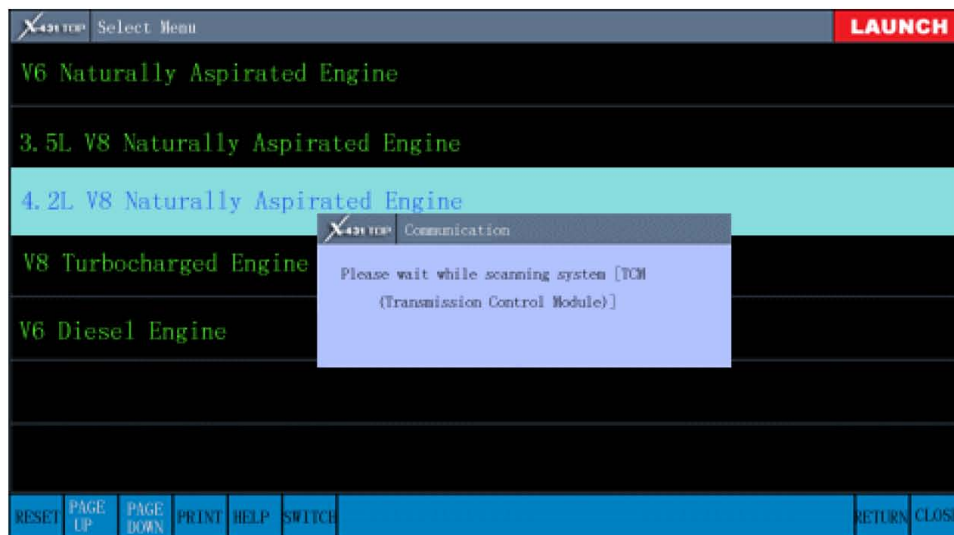


Figure 5 Start System Scan

Because different car has different configuration, the scan time is also different. But usually it takes only 2 minutes.

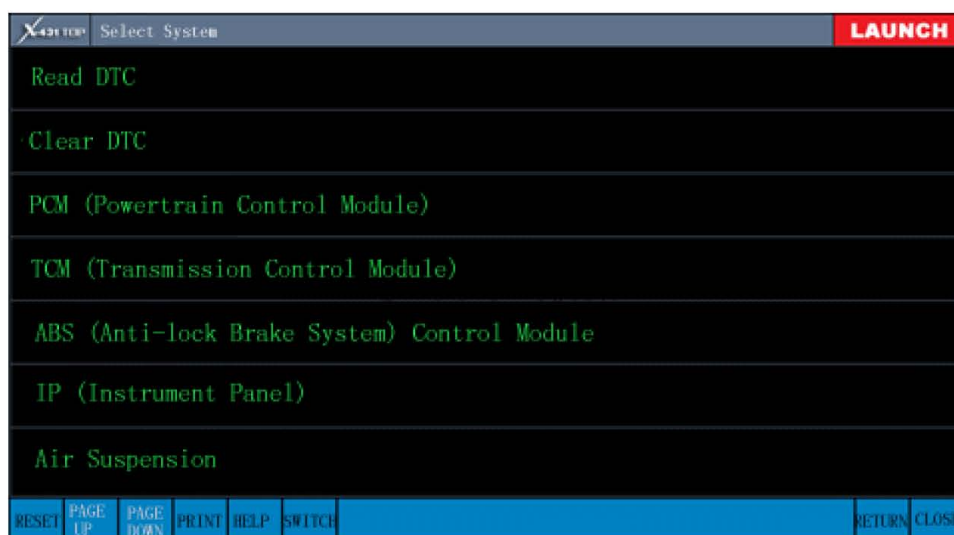


Figure 6 System List

After scanning, it lists all existing systems. Figure 6 displays not only the scanned systems, but also another two fast diagnostic functions: Read DTC and Clear DTC. Operator can perform fast reading and clearing to all system DTCs by one click. If select specific system, it will display corresponding diagnostic functions (See Figure 7).



Figure 7 System Diagnostic Functions

After accessing the system, operator can select different function according to the demand. For details, please refer to product manual.

2.2 Previous Mode

Previous Mode is a diagnostic mode accessed by manually selecting system menu. In this case, customer shall be familiar with the basic car information. After selecting menu, customer enters corresponding system to perform the test. The procedure of Previous Mode is shown in below figures.

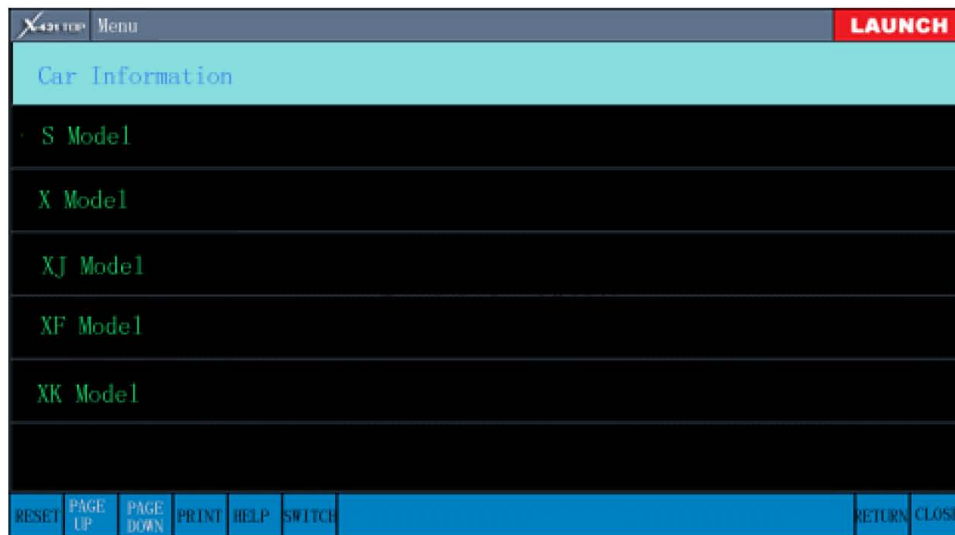


Figure 8 Car Model List after Previous Mode Selected

In next step, operator shall select the car model, which can be obtained through earlier introduced method or selecting Car Information to obtain basic car information (car model, model year, engine type).



Figure 9 Model Year List after Car Model Selected

2010 Onwards mean the car in and after 2010



Figure 10 Engine Type List after Model Year Selected

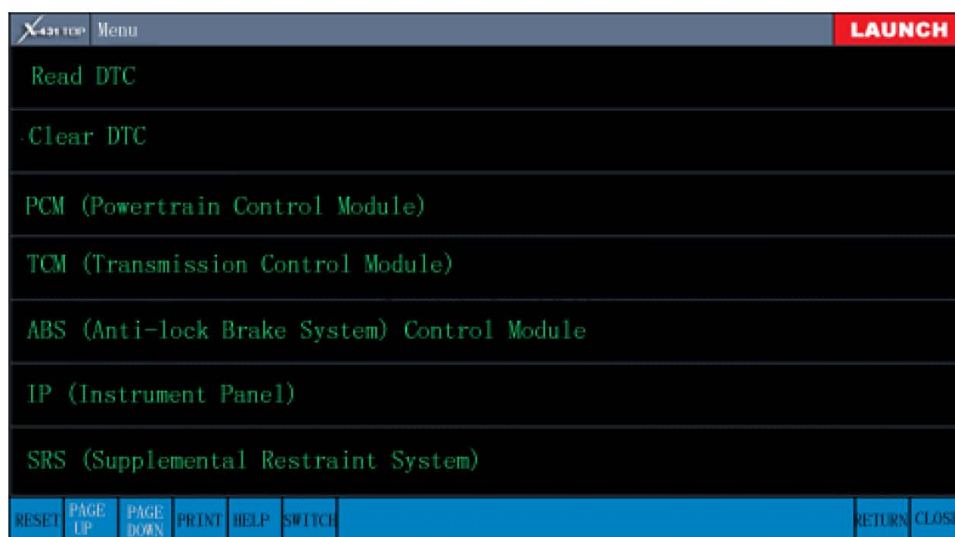


Figure 11 System List after Engine Type Selected

In this step, operator can perform fast test by Read DTC and Clear DTC, or select single system to do the test. When perform single system test, it is possible that some system cannot be accessed. This is normal because the car is not equipped with this module.