

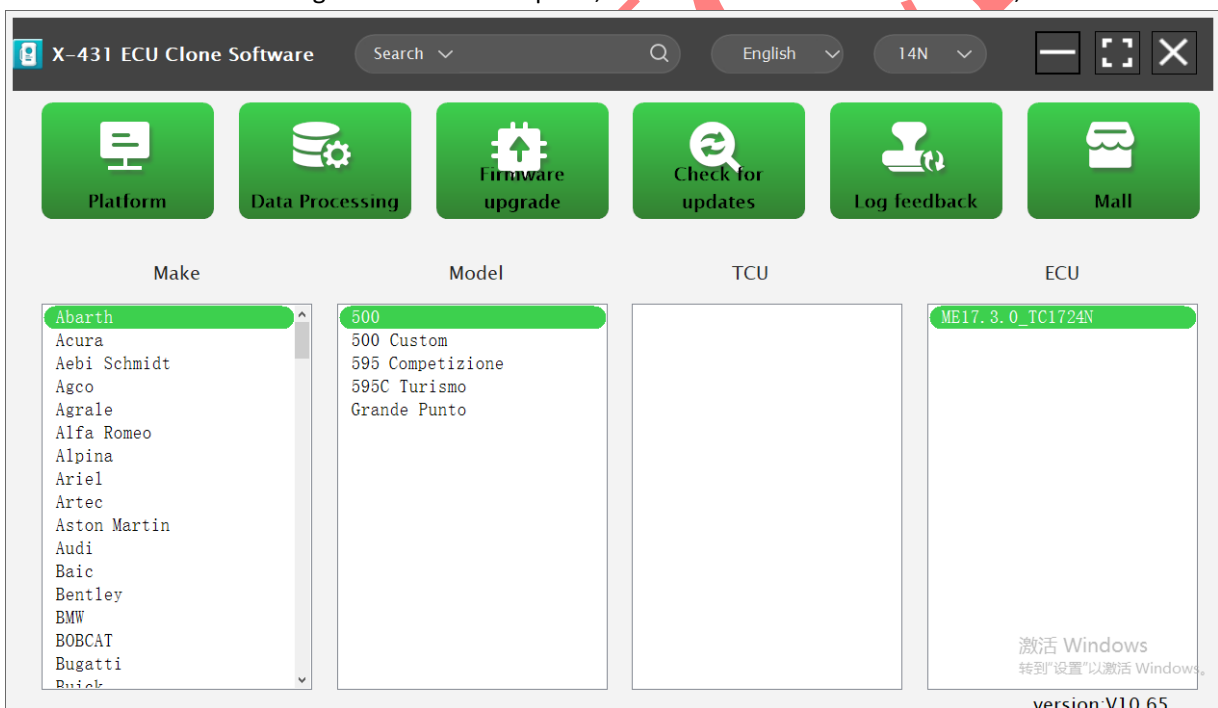
# Mercedes-Benz DSM Transmission Gear Shift Control Unit Cloning

**Function Description :** Mercedes-Benz DSM transmission gear shift control unit

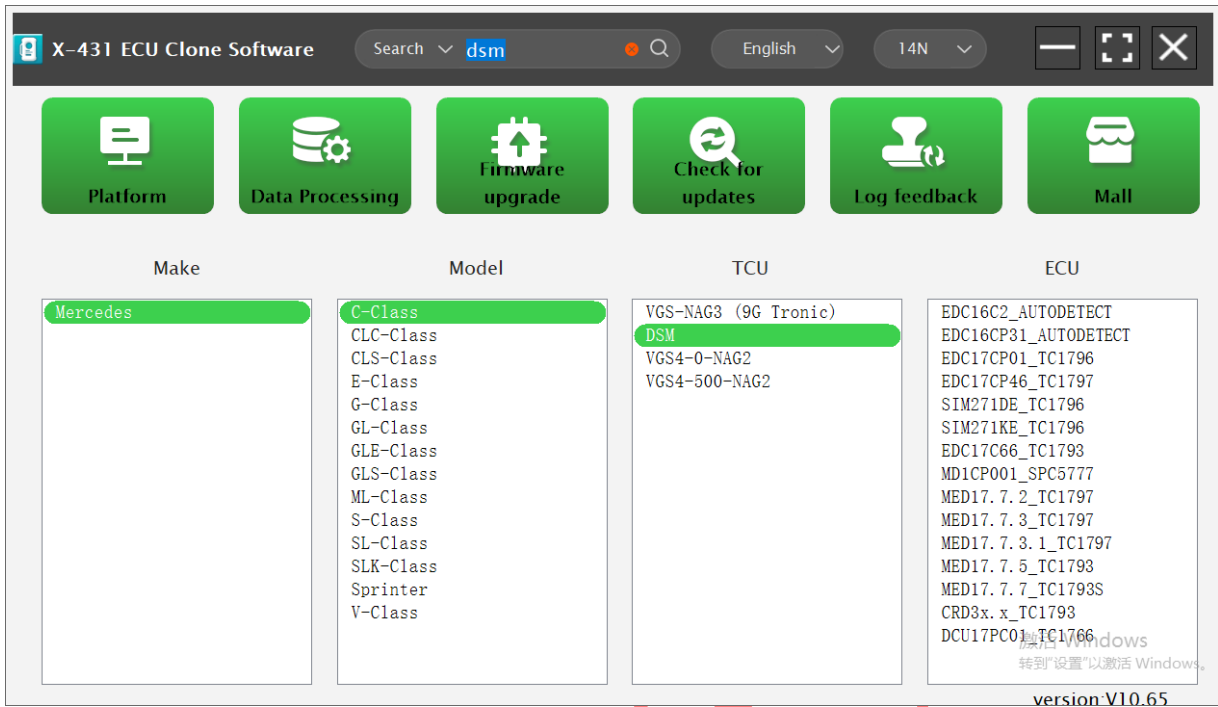
**cloningSupported Products:** X-431 ECU Module Cloning or Anti-theft Programmer G3-PC and G3 Programmer

## Operation Procedure:

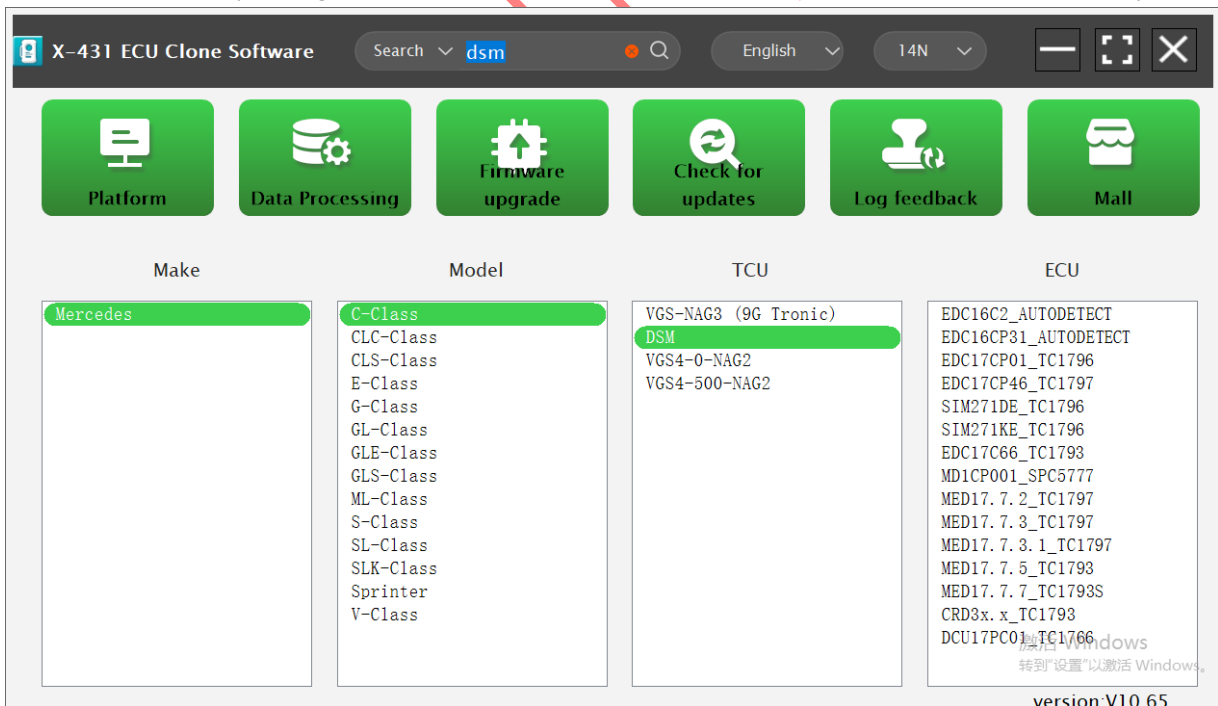
1. Connect the ECU cloning device to the computer, ensure a stable network connection, and launch the software



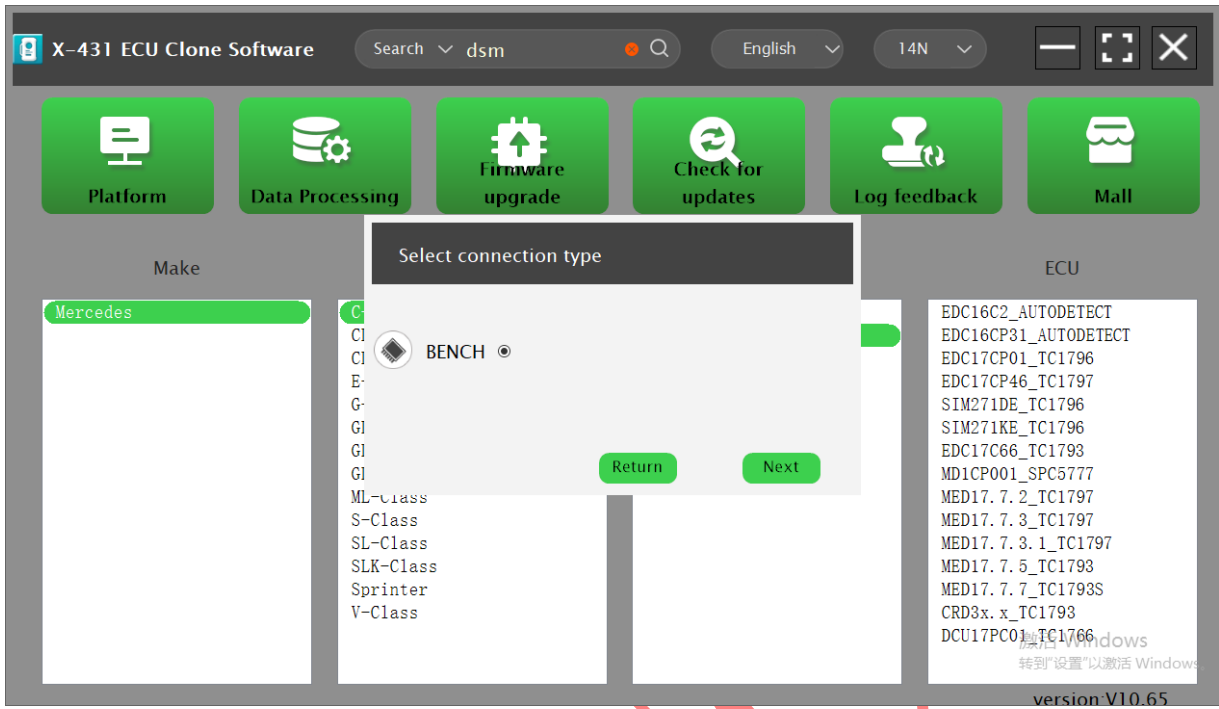
2. Enter the transmission model **DSM** in the top search bar and search



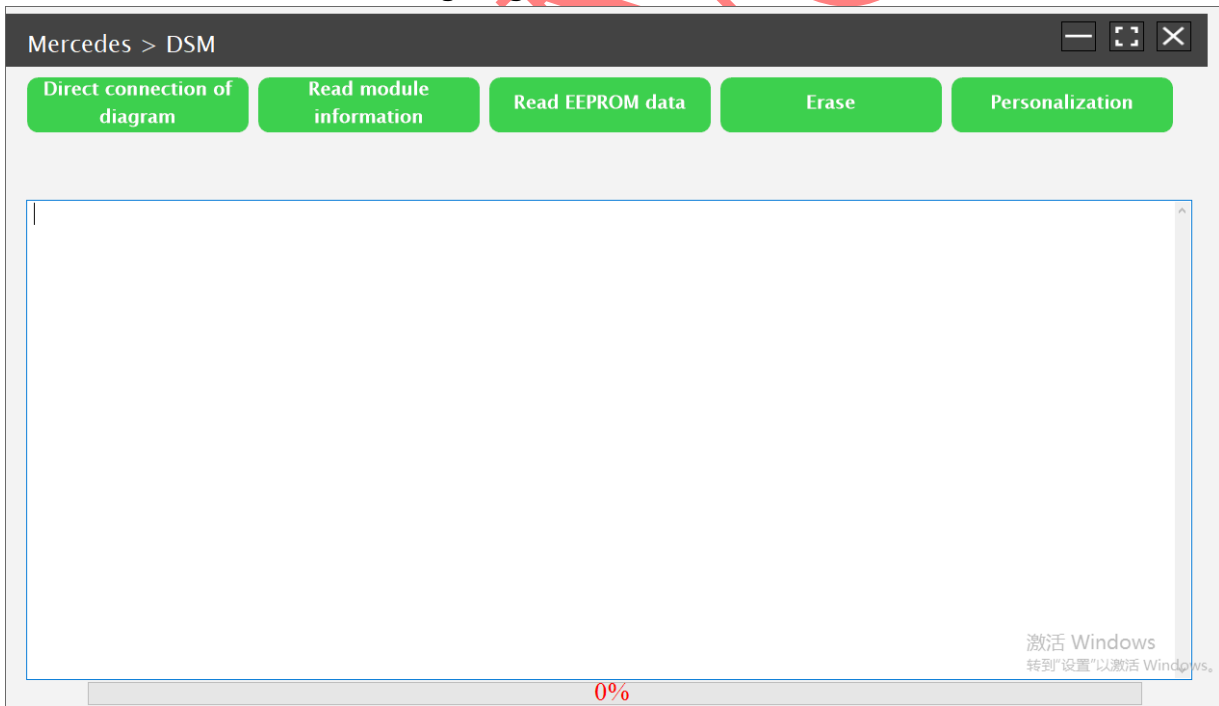
3. Select the corresponding brand and vehicle model, then double-click the transmission model to proceed



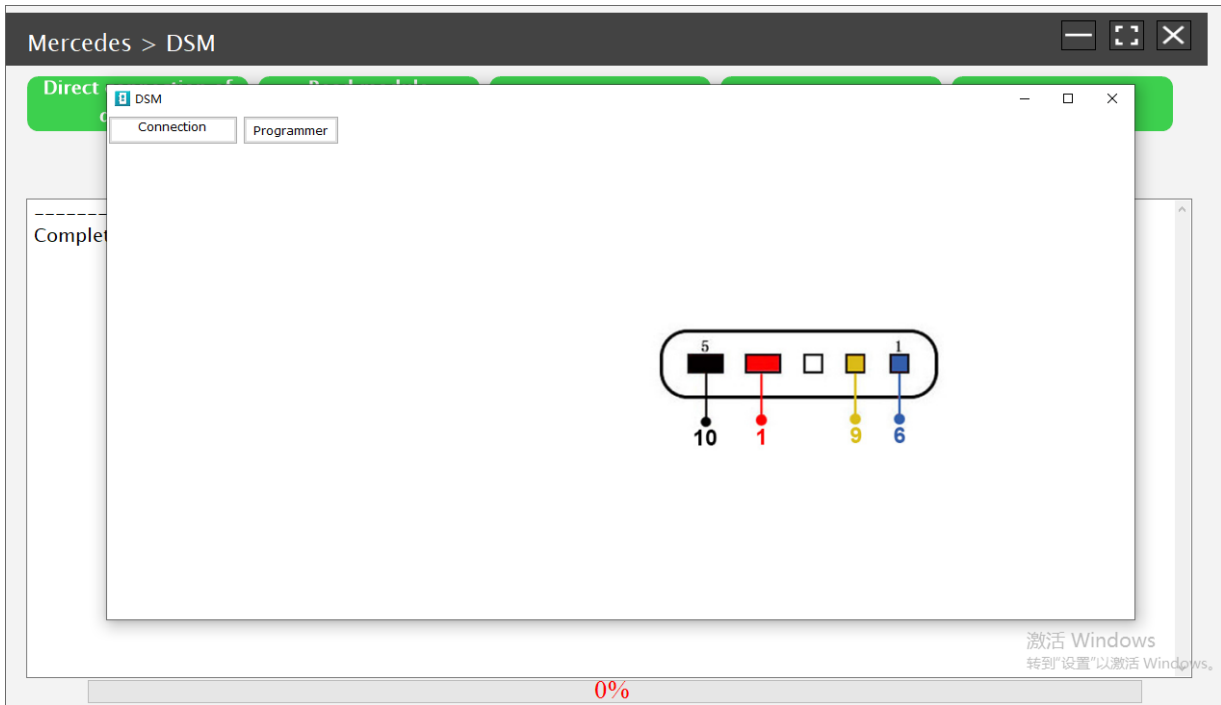
4. Select **Next** to continue



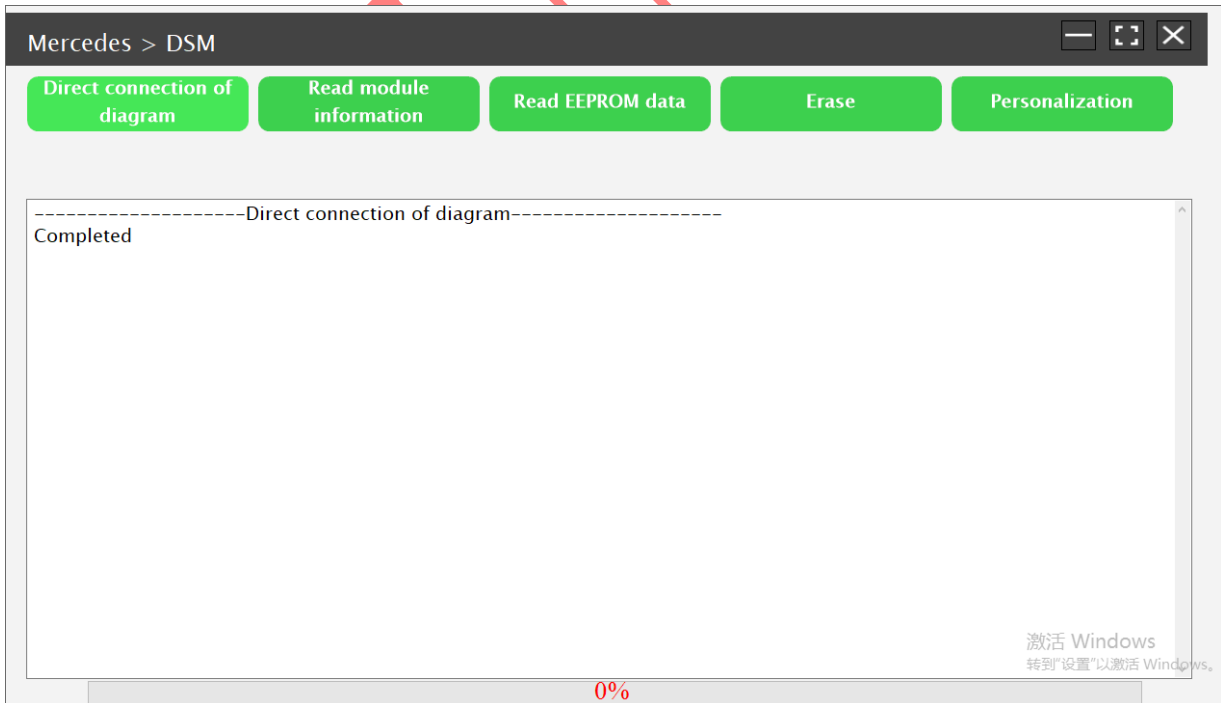
5. Select **Direct Connection Wiring Diagram**

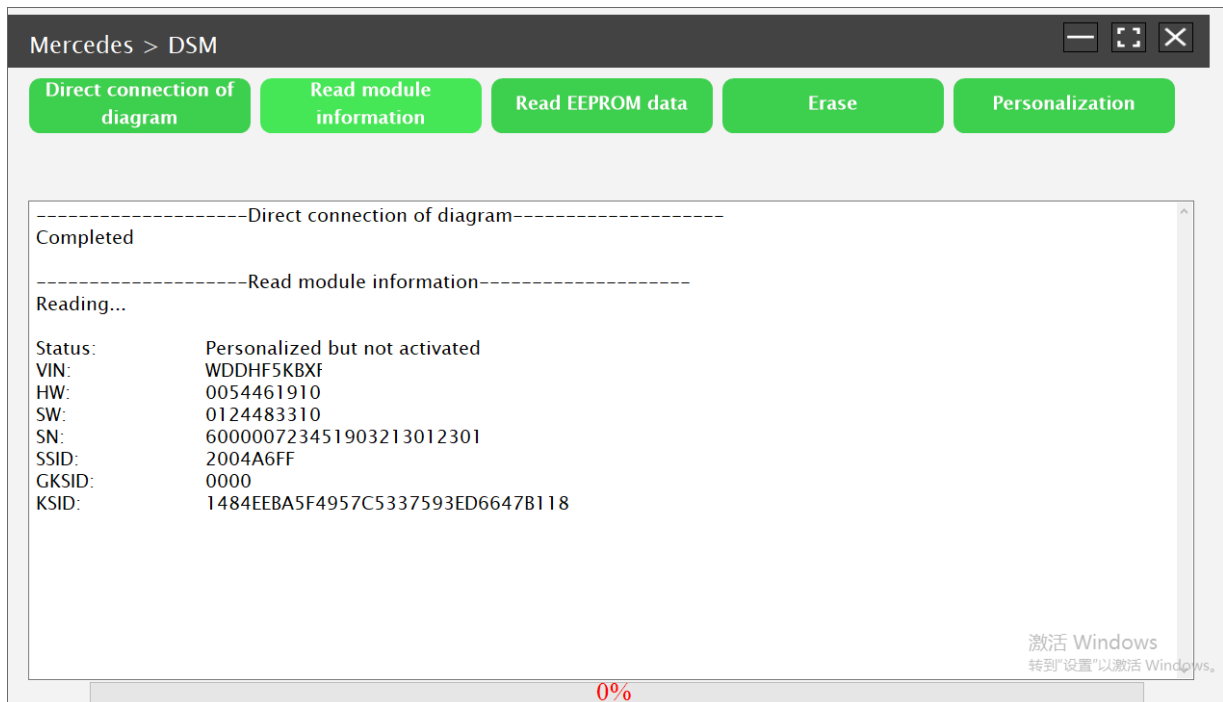


6. Connect the original vehicle gear shift control unit following the wiring diagram;

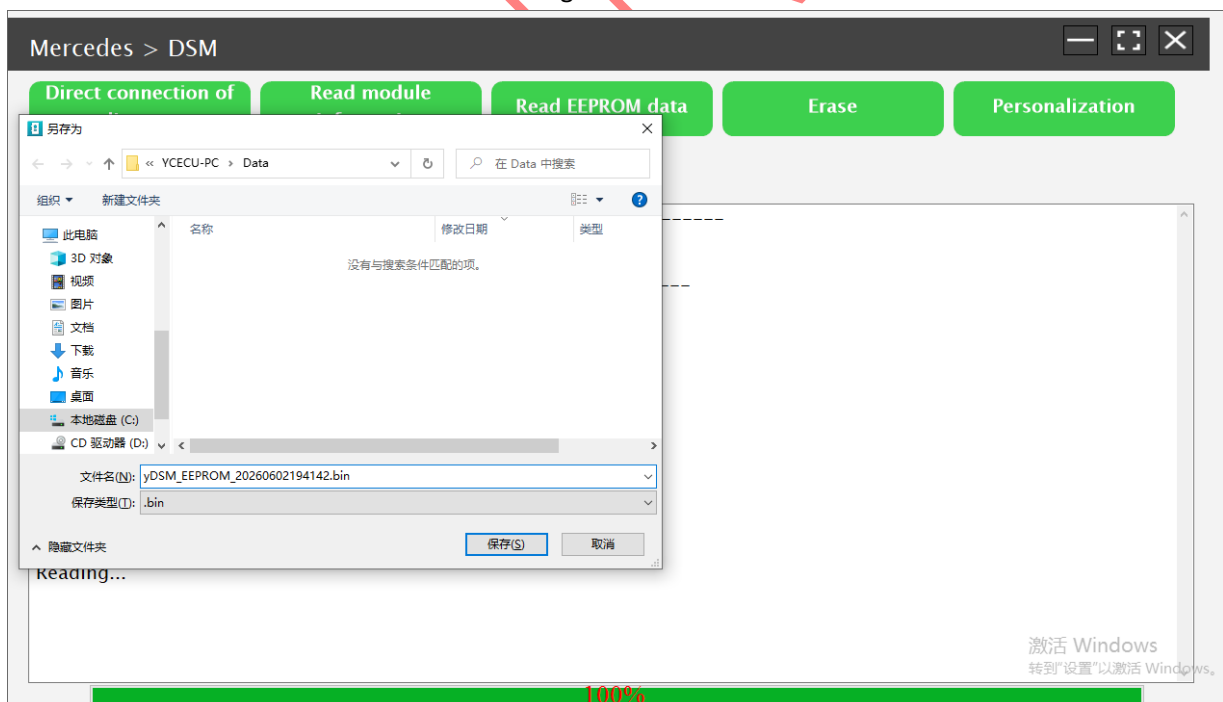


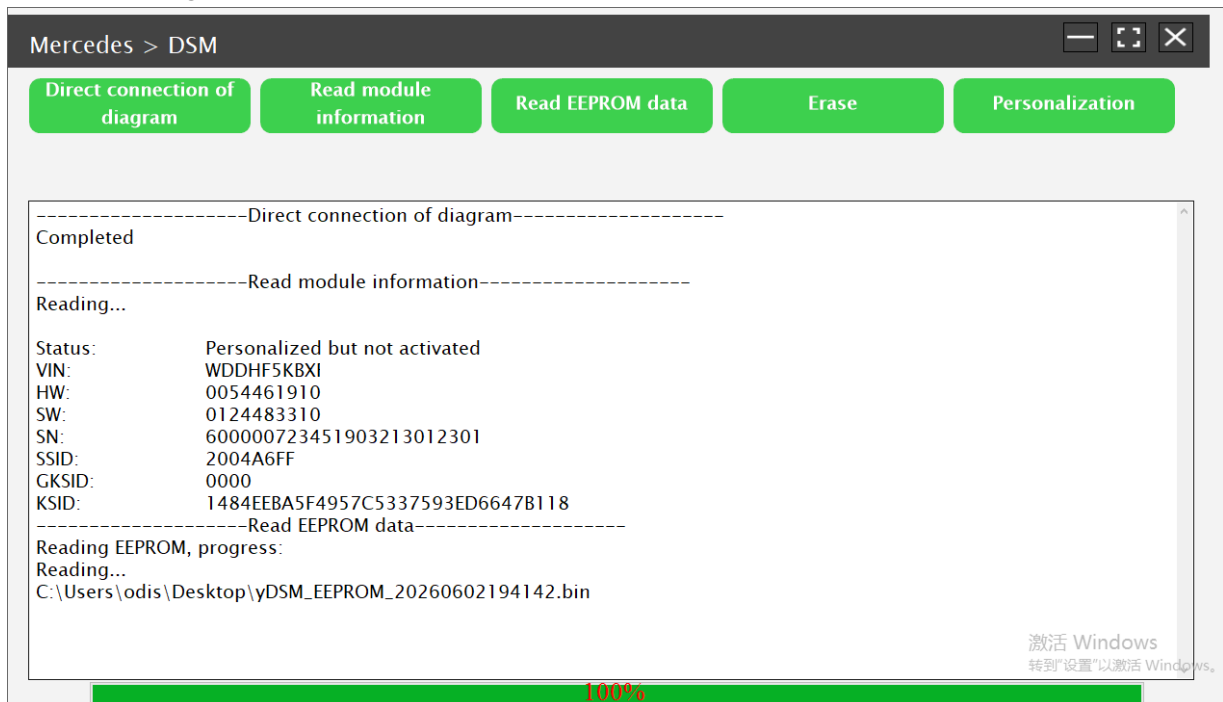
7. Keep the network stable and select **Connect**:



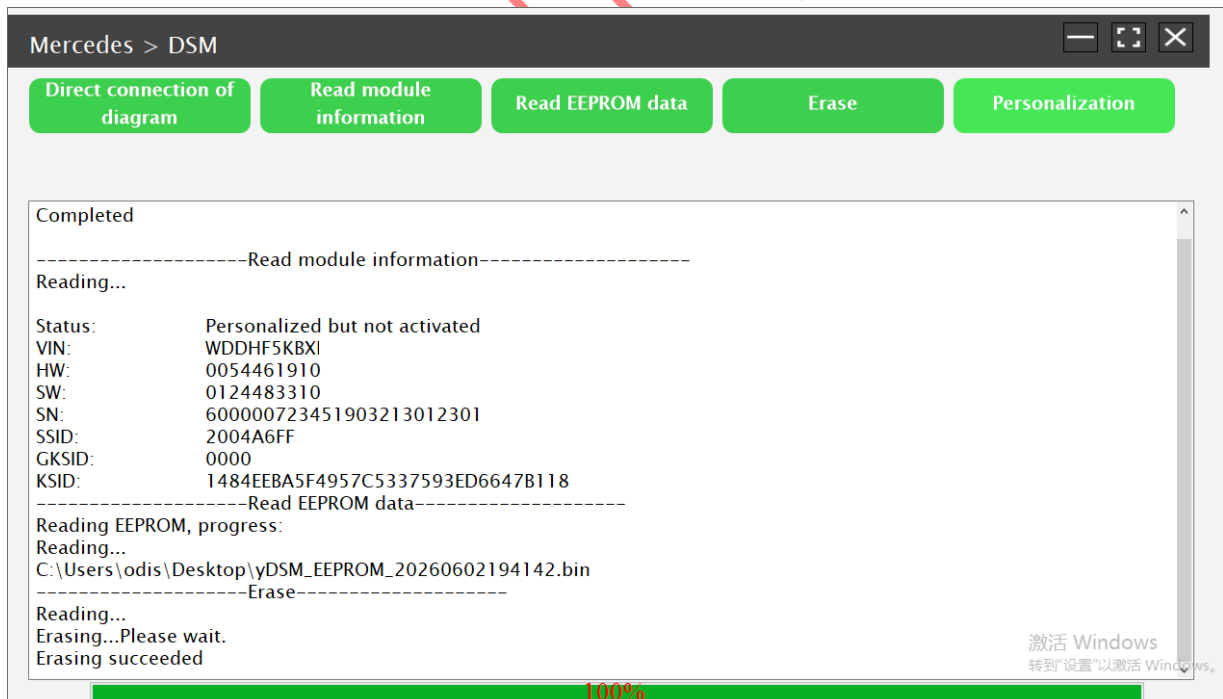
8. After successful connection, select **Read EEPROM**

## 9. Save the read file after successful data reading:



10. After saving the data, select **Read EEPROM Data**

## 11. Select erase, and after erasing is complete, load the module onto the vehicle for programming and coding

**Statement:**

The content of this document is copyrighted by LAUNCH TECH CO., LTD., and no individual or organization may quote or reprint it without consent.