

# Transmission VGS-FDCT Computer Clone

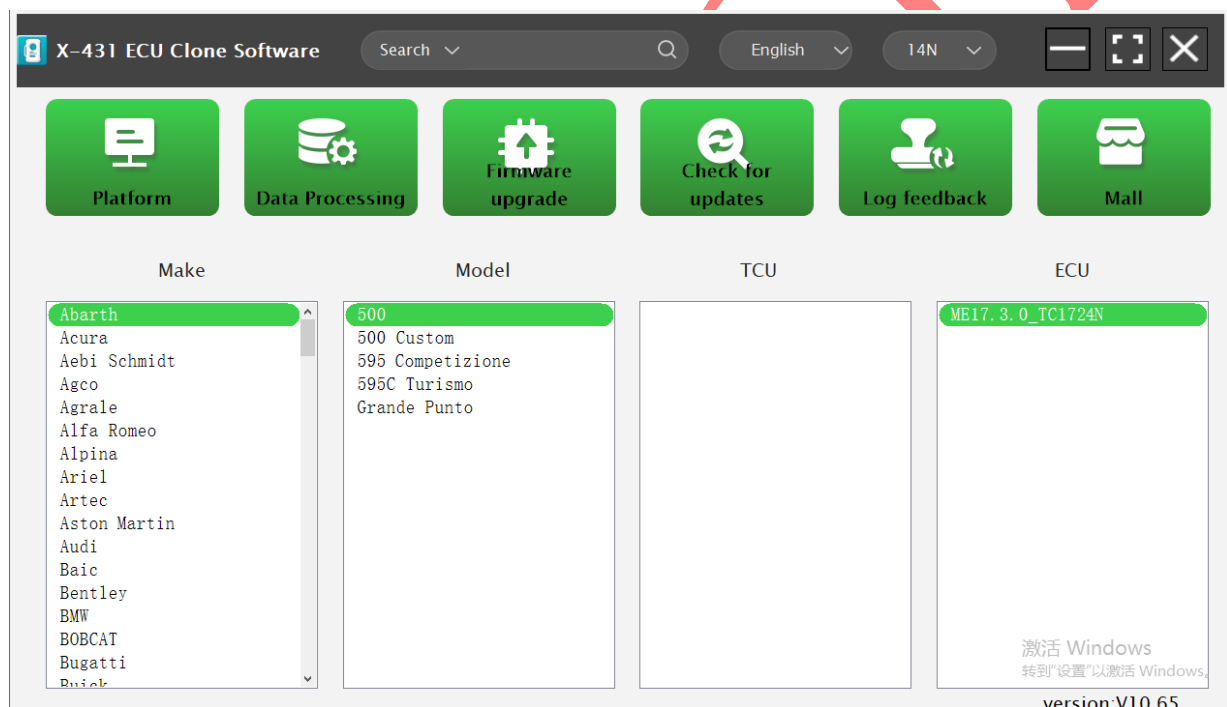
Functional Description: Transmission computer VGS-FDCT clone

Support products: X-431 ECU Module Cloning or Anti-theft

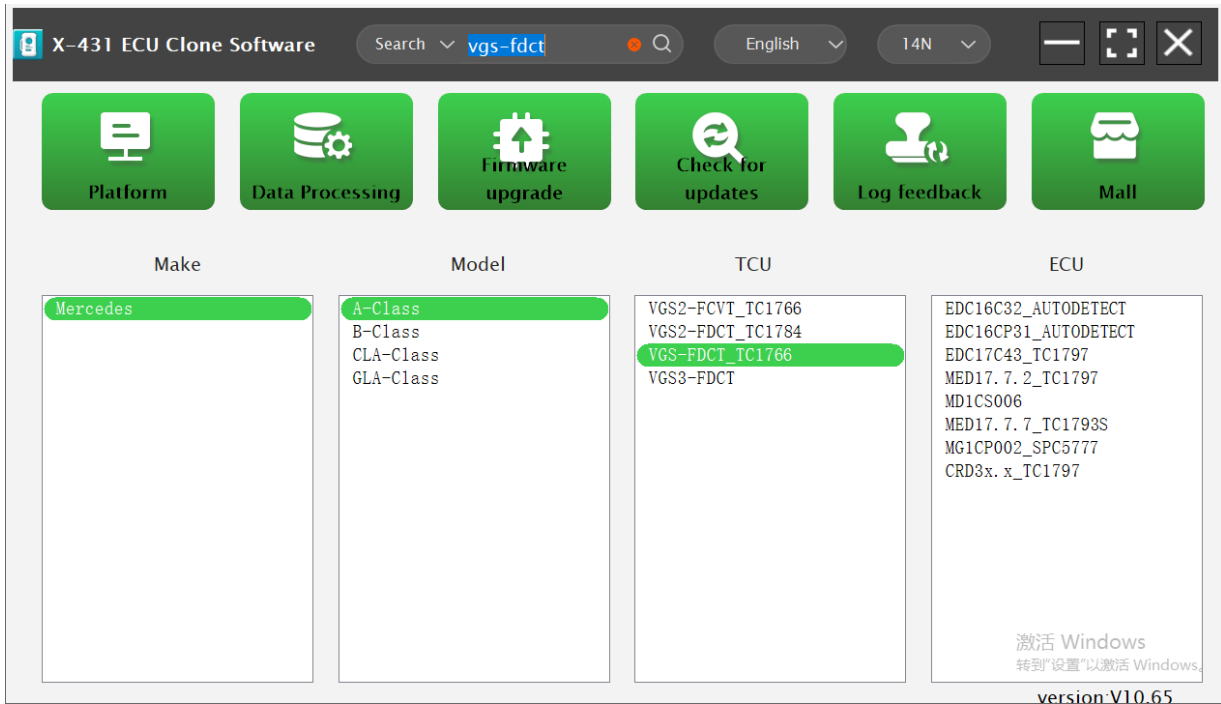
Programmer G3-PC and G3 Programmer

Operation process:

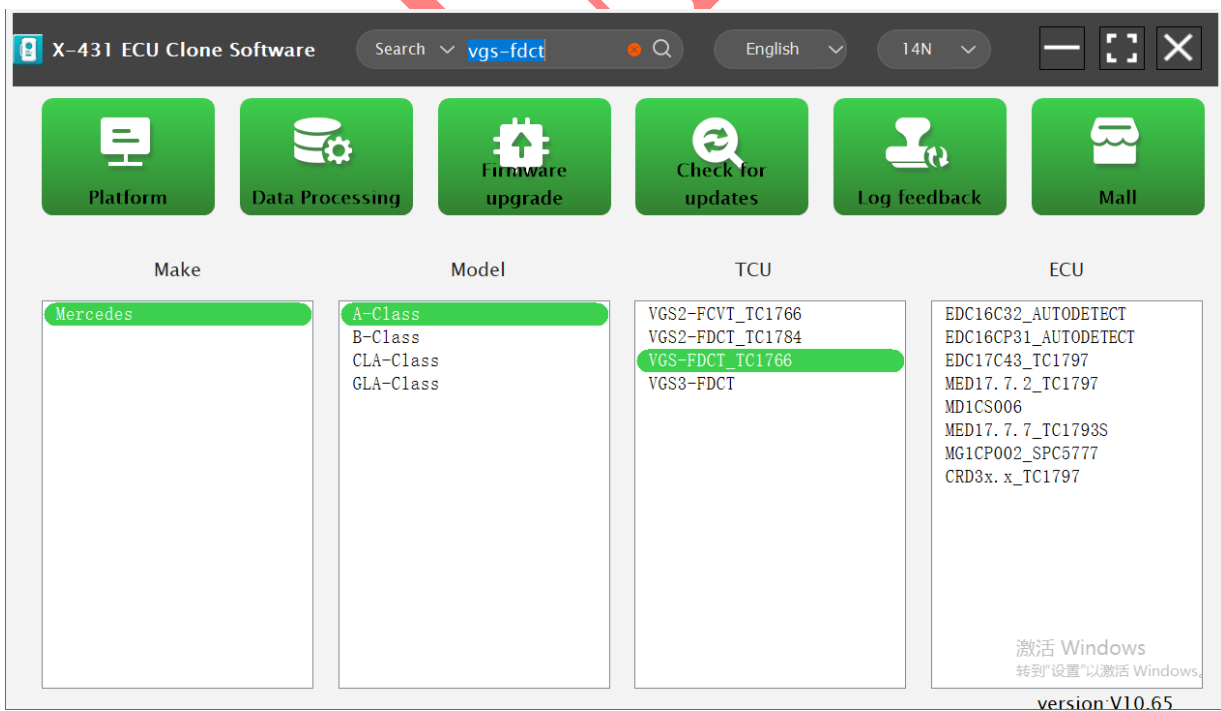
1. Connect the ECU cloning device to the computer and keep the network normal. Open the software



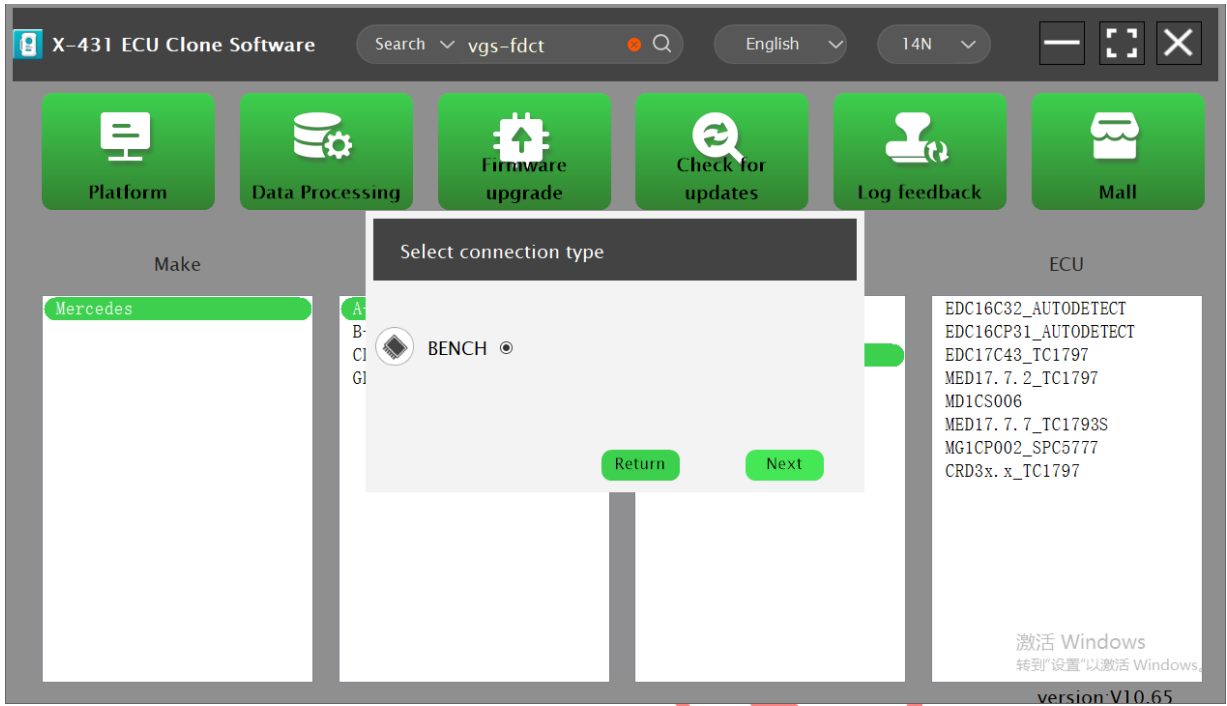
2. Enter the transmission model MPS6 in the top search bar to search,



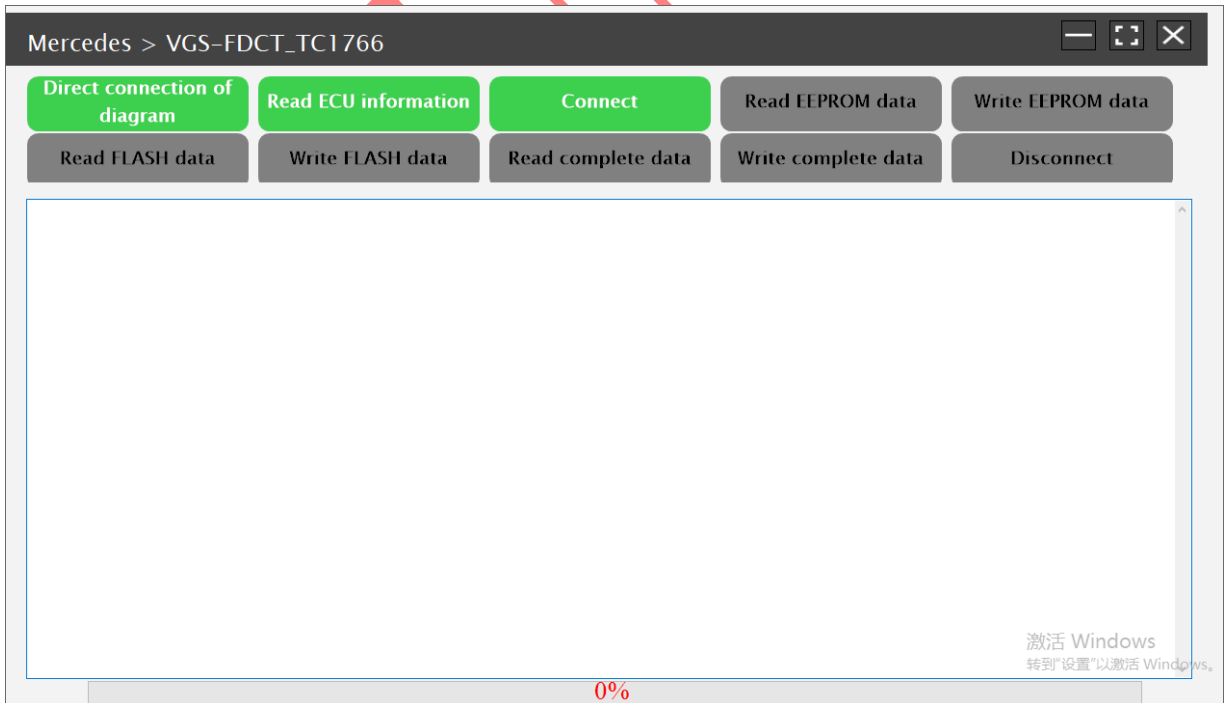
3. Select the corresponding brand and model, double-click on the transmission model to enter as shown in the figure



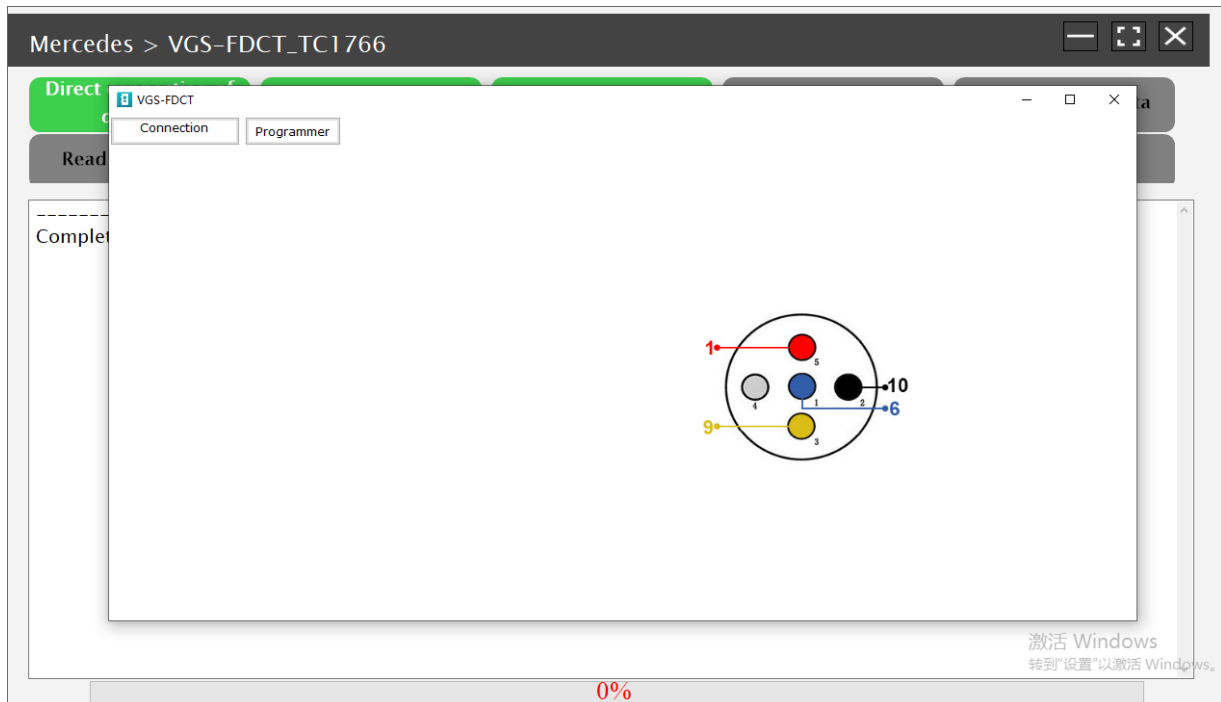
4. Select 'Next' to enter



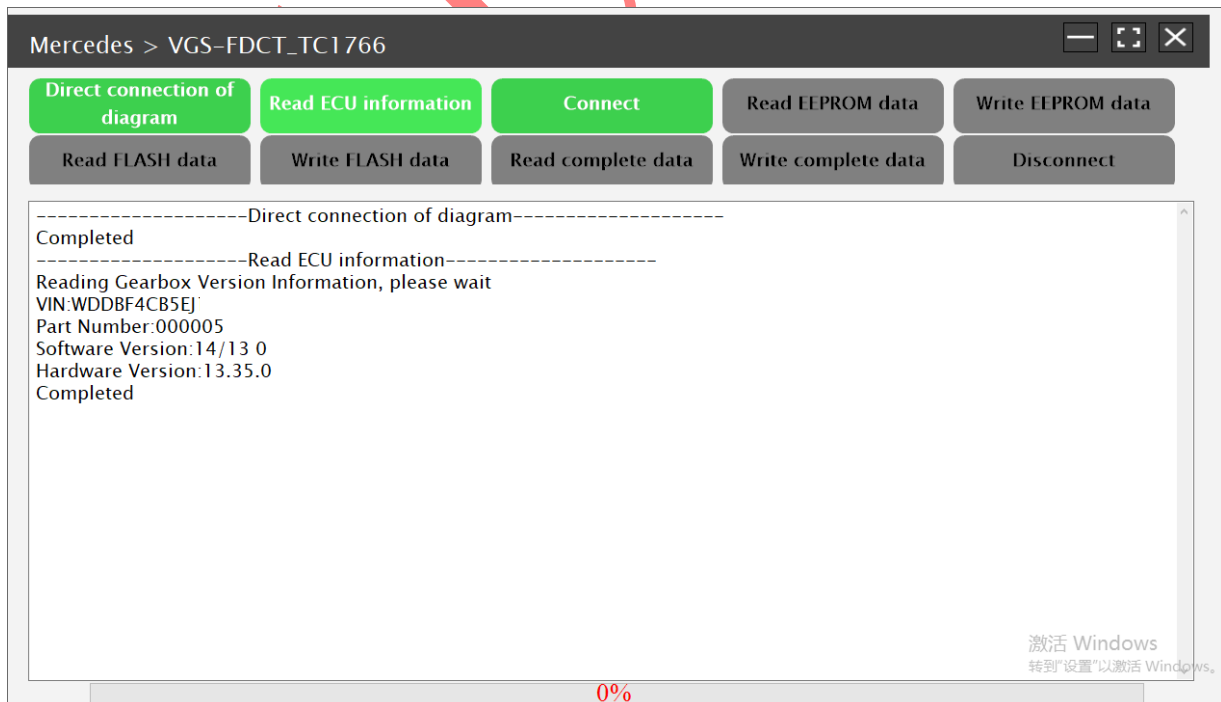
5. Select the 'Direct Connection Diagram'



6. Connect the original gearbox computer according to the wiring diagram

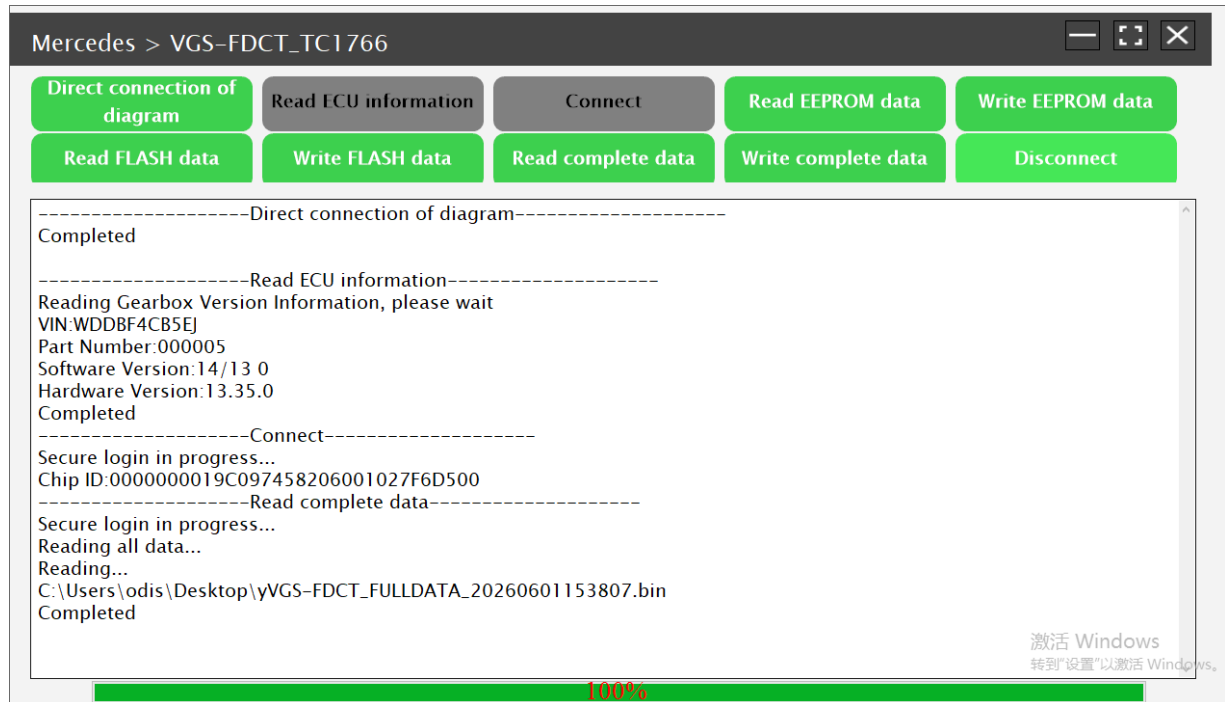


7. After keeping the network normal, select [Connect]

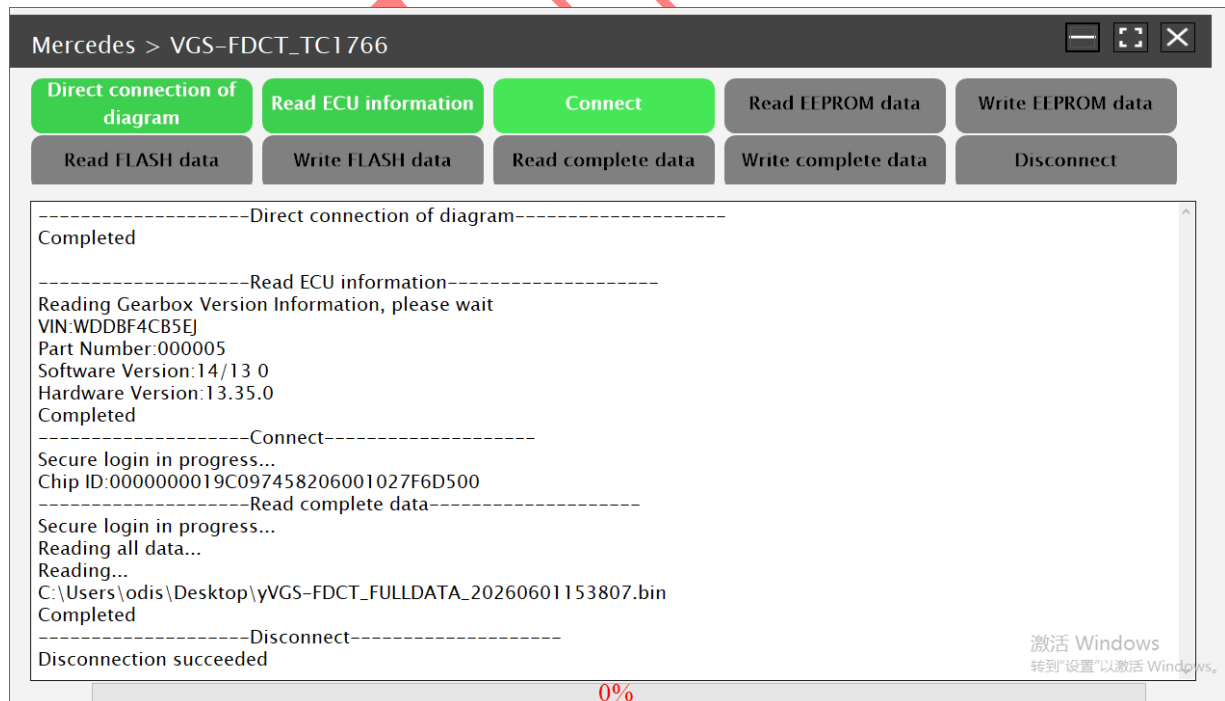




## 10. After saving the data, select 【 Disconnect 】

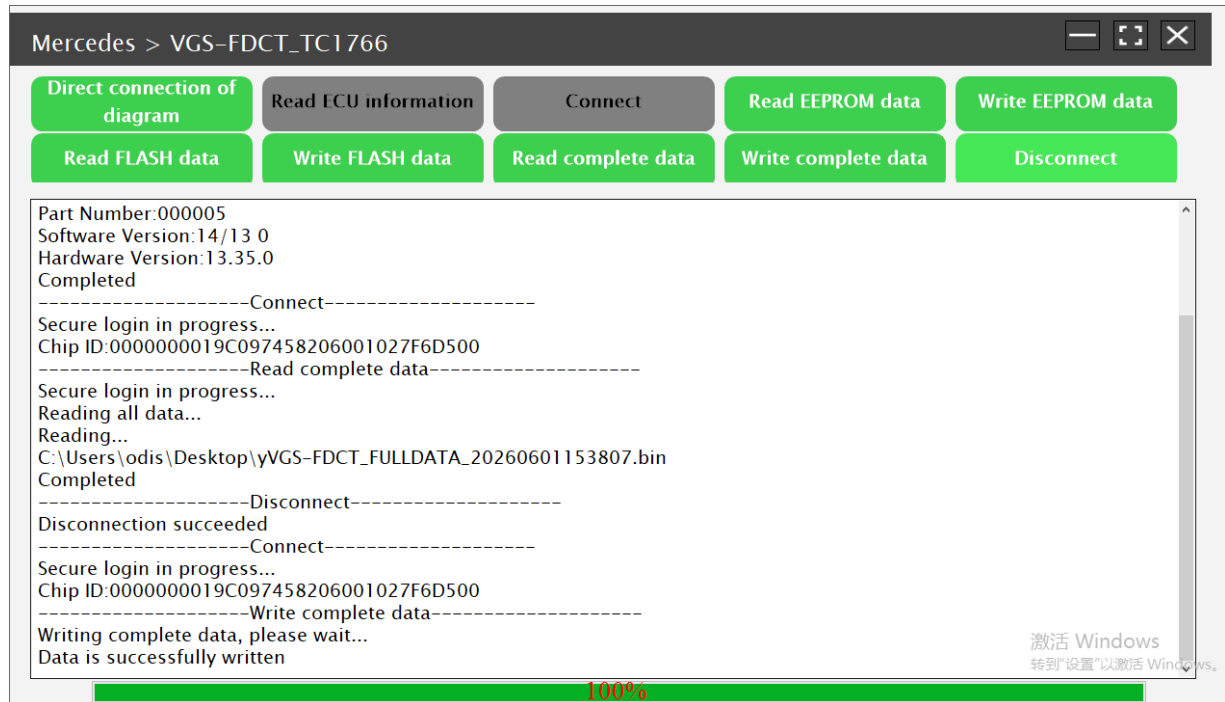


## 11. Connect the second-hand computer and select [Connect] to enter

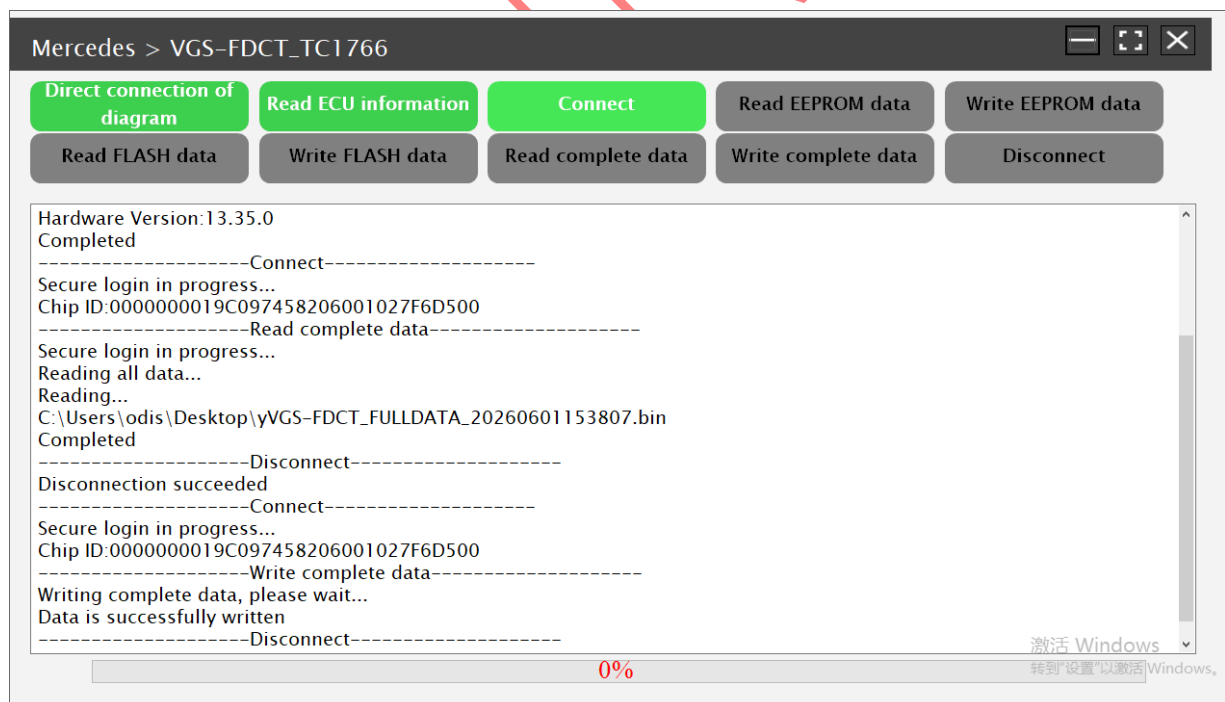




## 14. Data write successful, select 【 Disconnect 】



## 15. Simply load the second-hand computer onto the vehicle for testing



## Statement:

The content of this document is copyrighted by LAUNCH TECH CO., LTD., and no individual or organization may quote or reprint it without consent.