

Mercedes Benz W211 Lock Head - No Gateway, Completely Lost Anti theft Key Matching

Instructions:

1. The G5 anti-theft programmer requires an external diagnostic device USB port for the wiring harness, while the G3 anti-theft programmer does not require it;

MCUV5 needs to be used in conjunction with G5 anti-theft programmer, just like MCV3 needs to be used in conjunction with G3 anti-theft programmer and cannot be mixed;

MCUV5 does not require an additional 12V power supply, while MCV3 requires an additional 12V power supply;

Operating instructions:

1. Taking the W211 lock without gateway and complete lost anti-theft key matching as an example, after entering the Mercedes Benz anti-theft software, connect it according to the wiring diagram and click "OK" (as shown in the figure below);

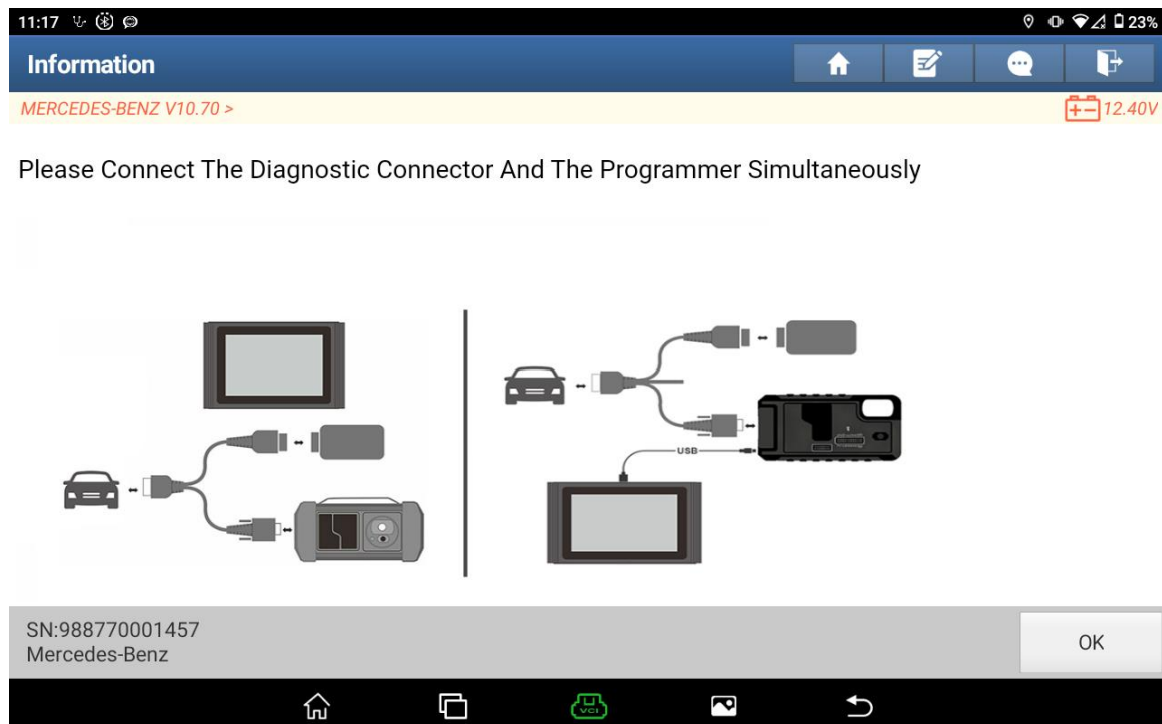


图 1

2. Click on "anti-theft key matching" (as shown in the figure below);

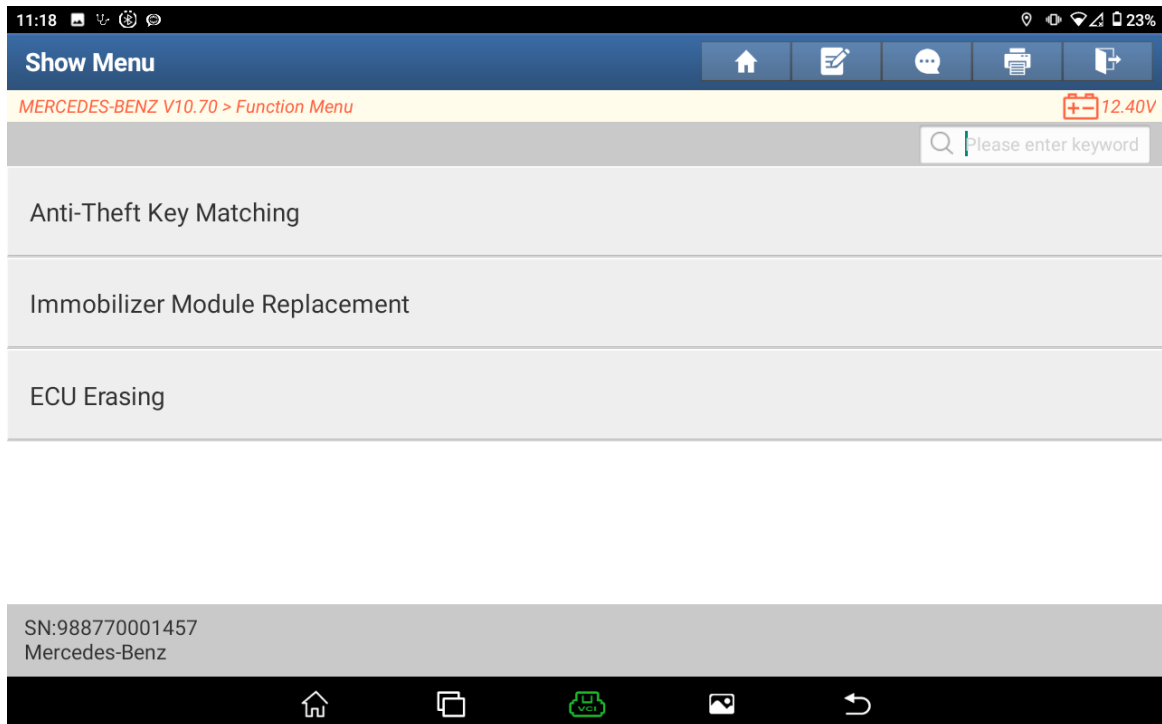


图 2

3. Click on "One click key matching" (as shown in the figure below);

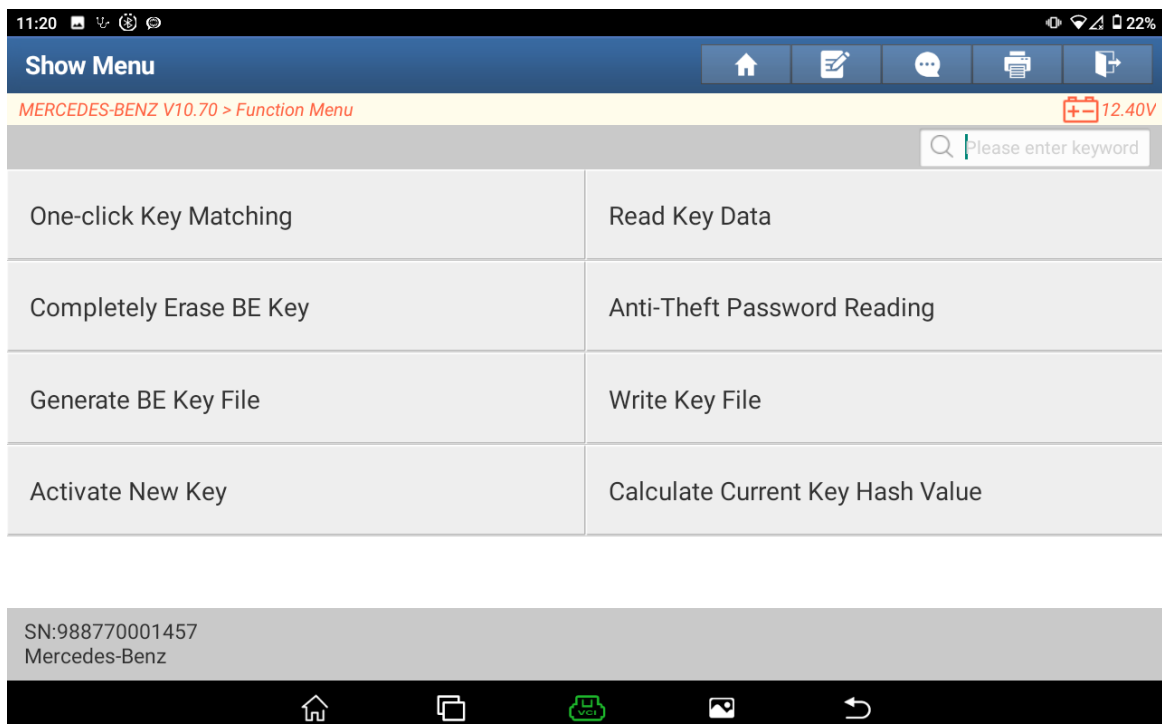


图 3

4. Select the menu according to the actual situation, click on "Operation on the Platform" here (as shown in the figure below);

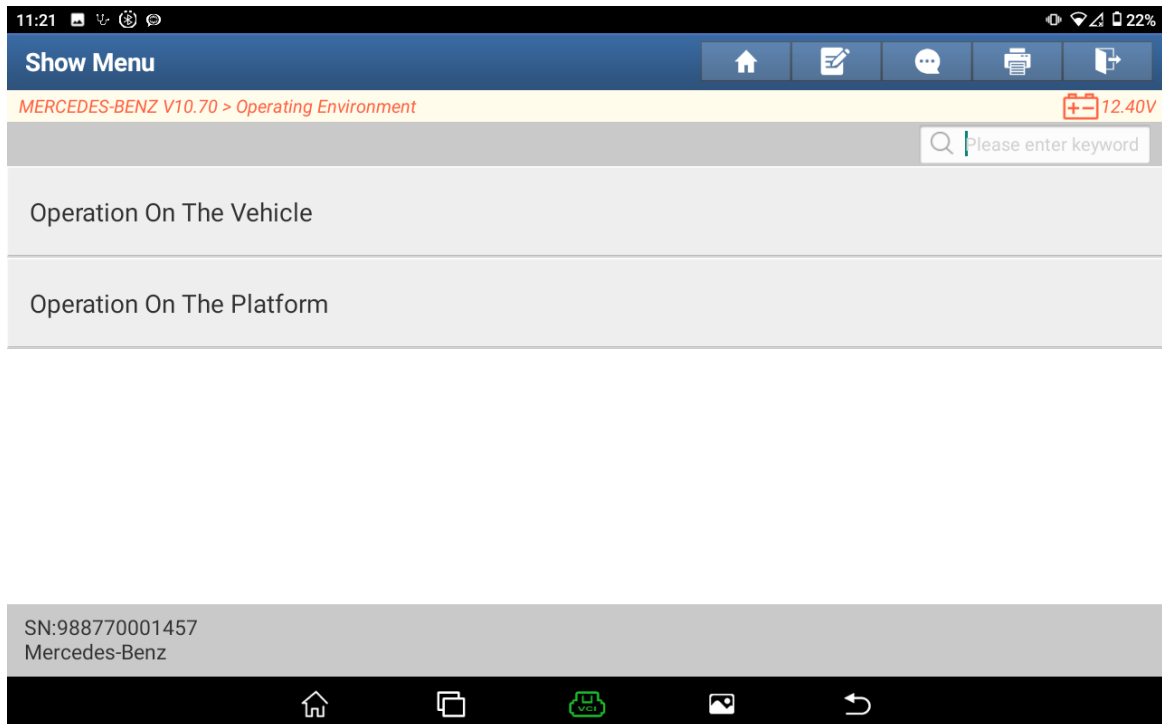


图 4

5. Click on 'Quick Calculate Password by for losing All keys' (as shown in the figure below);

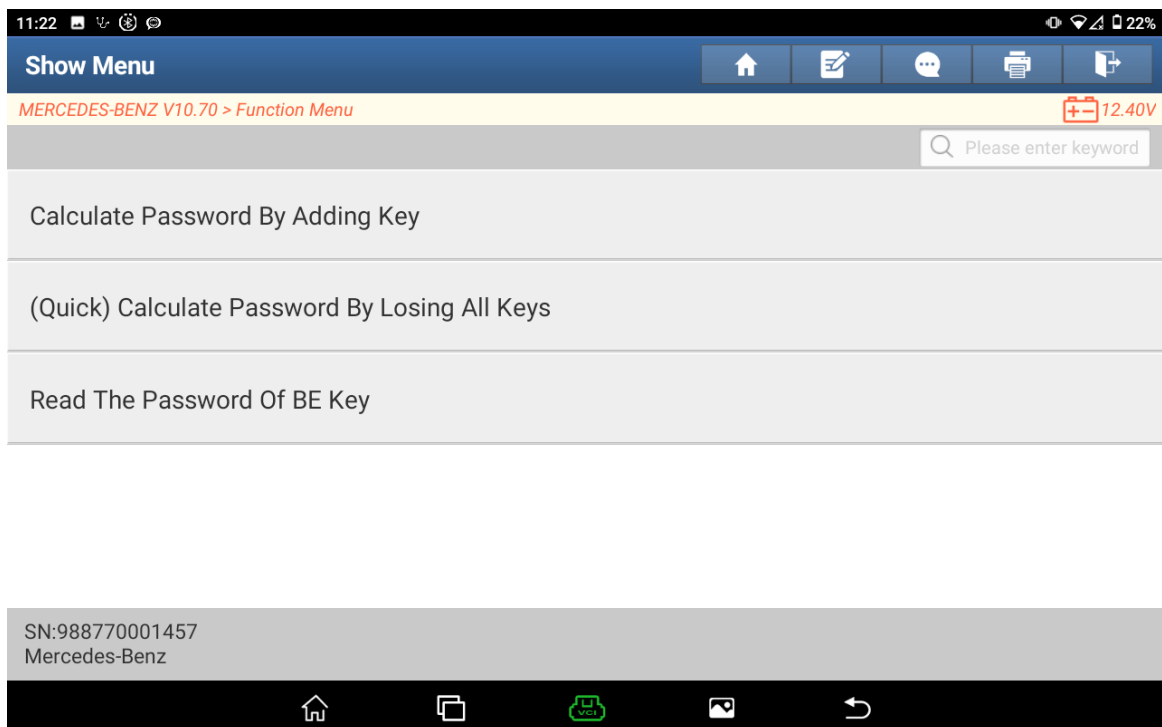


图 5

6. Click on "Connection Diagram" (as shown below);

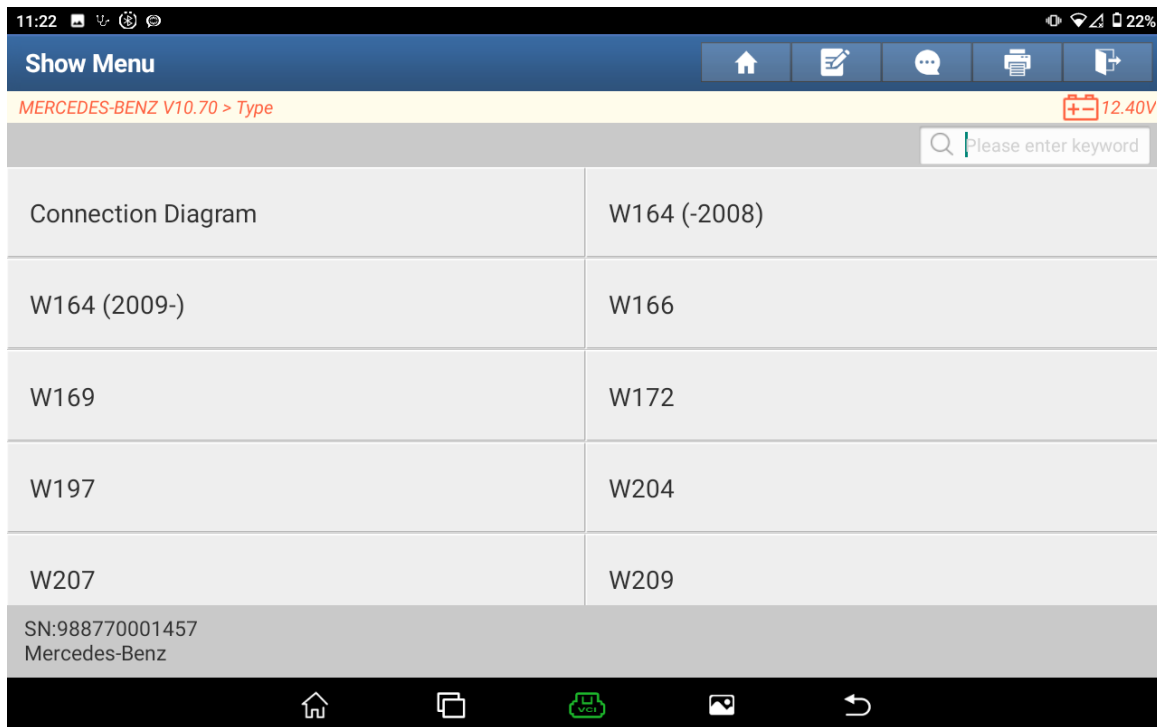


图 6

7. Click on "W211" (as shown in the figure below);



图 7

8. Connect according to the wiring diagram (supporting adjustable size) to ensure communication. Click "OK" (as shown below);

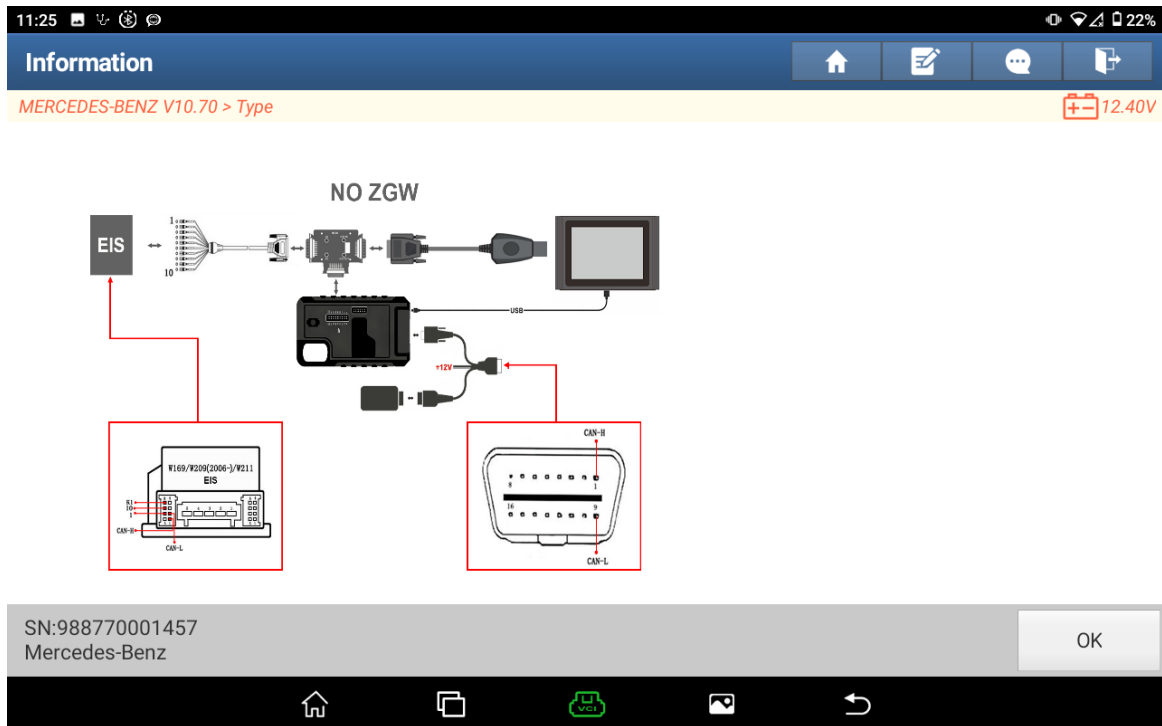


图 8

9. Physical reference image (as shown below);

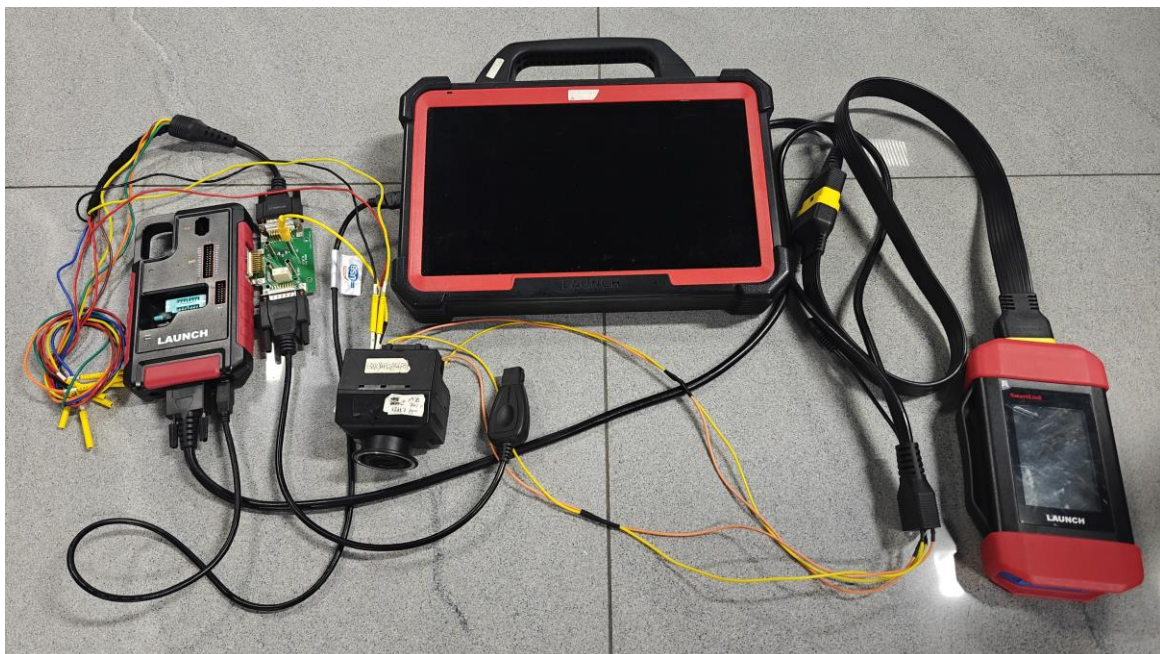


图 9

10. Return to the function menu, click on "W211", follow the prompts to automatically obtain the password (as shown in the figure below);

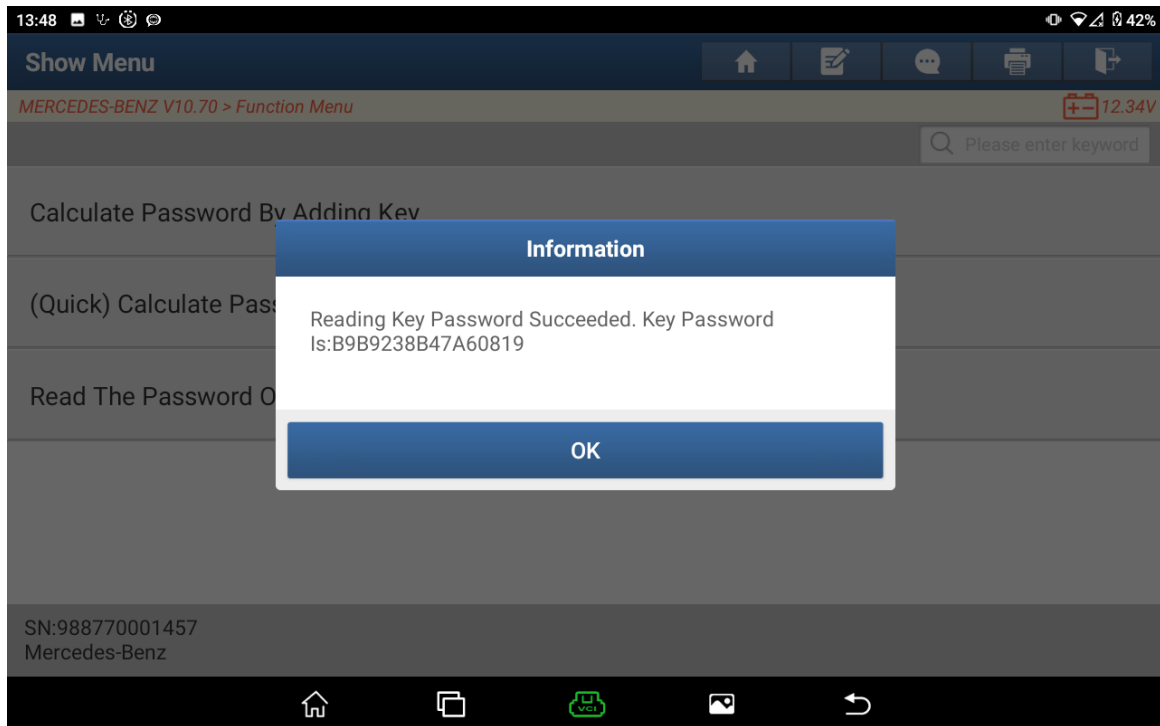


图 10

11. After naming and saving the file, click "OK" to automatically execute "Generate BE Key File" (as shown below);

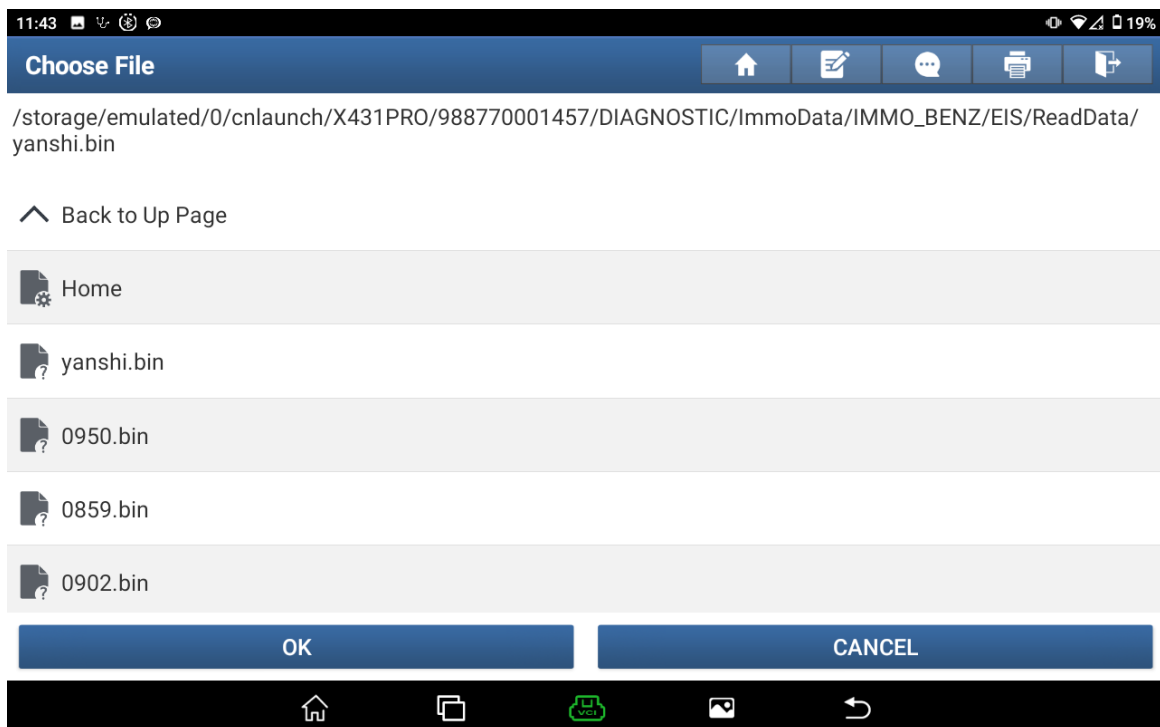


图 11

12. Select the file where the password was just calculated and saved, click "OK" (as shown in the figure below);

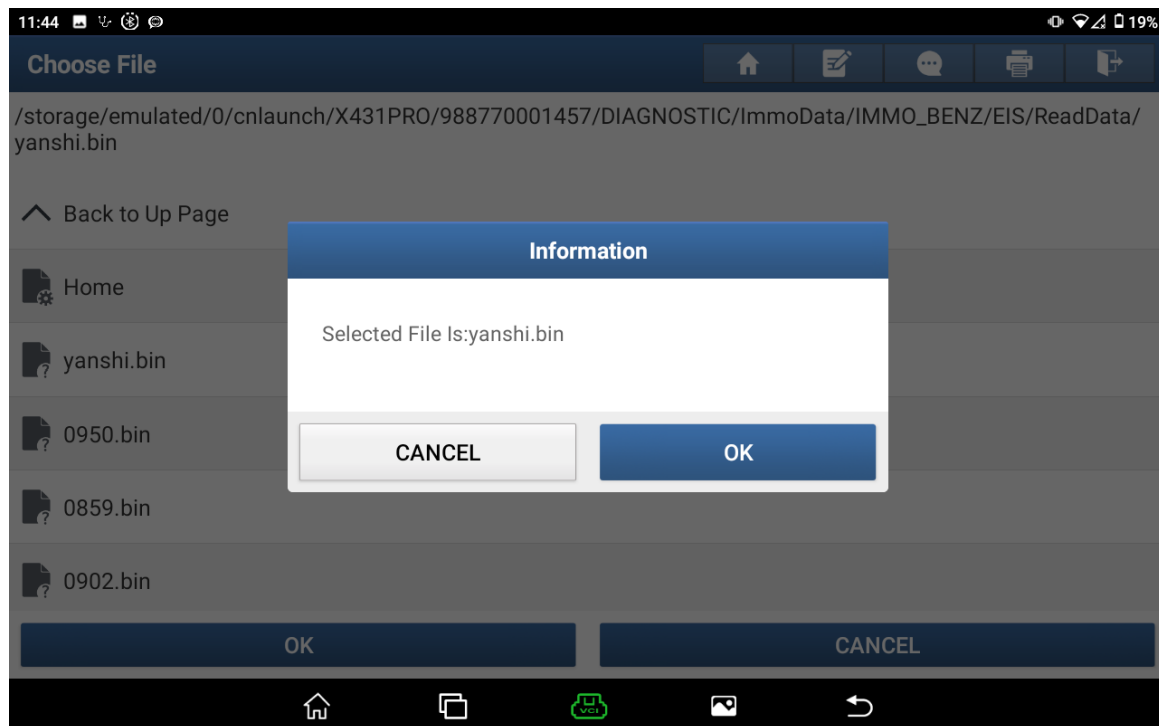


图 12

13. After confirming the password, click "OK" (as shown in the figure below);

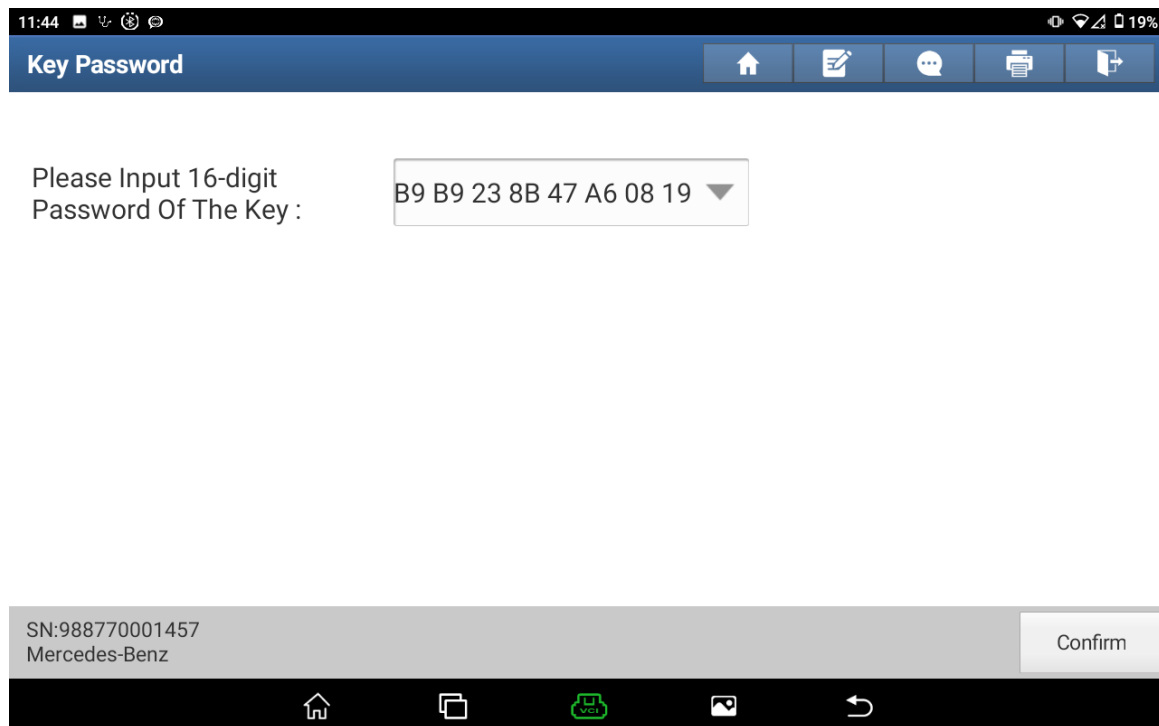


图 13

14. Click "OK" (as shown in the figure below);

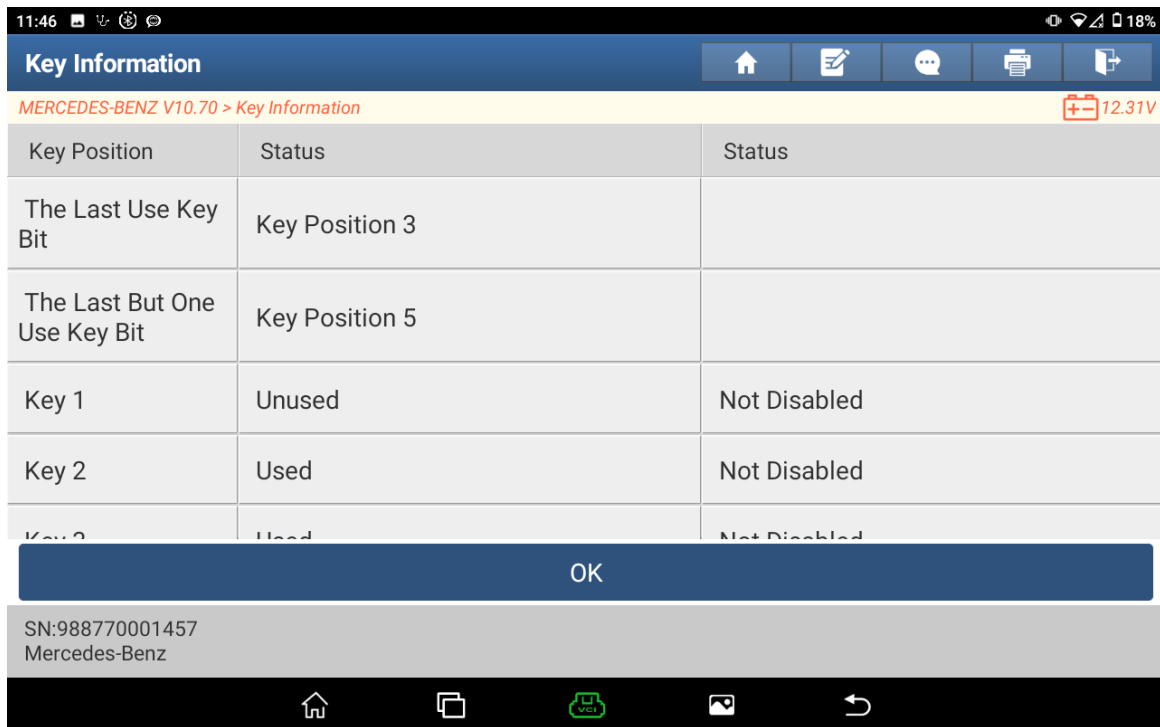


图 14

15. According to the requirements, select "Key 6" here and click "OK" (as shown in the figure below);

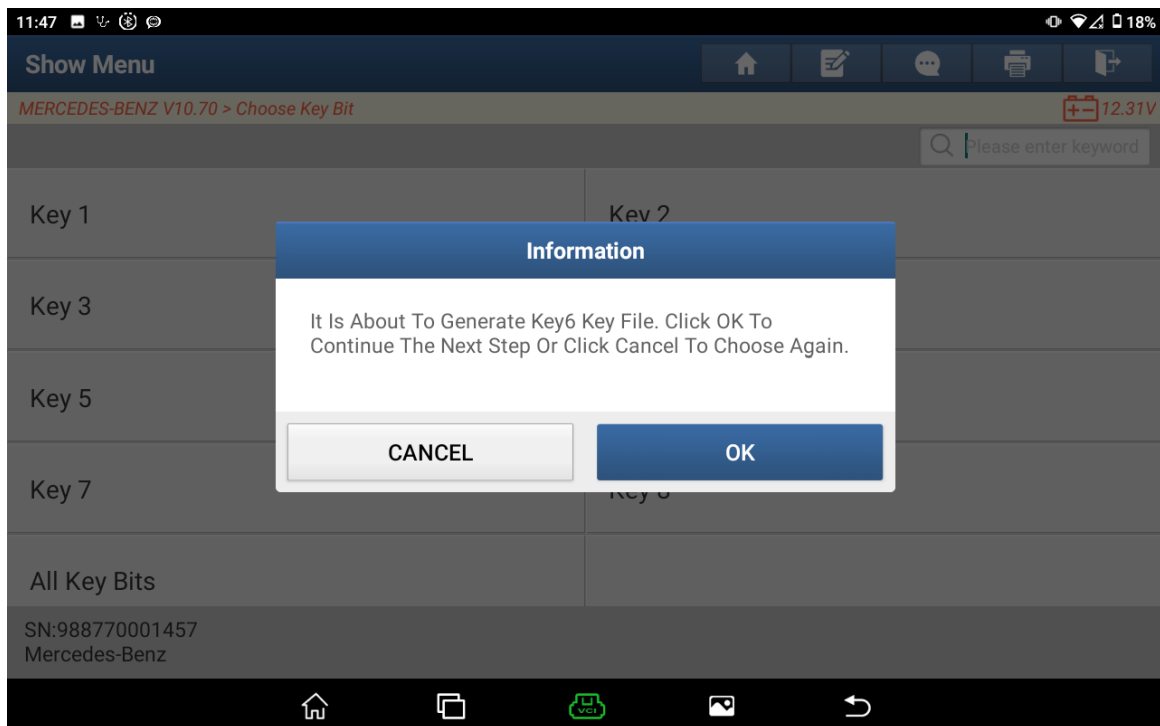


图 15

16. Successfully generated key file, note down the file name, click "OK" (as shown in the figure below);

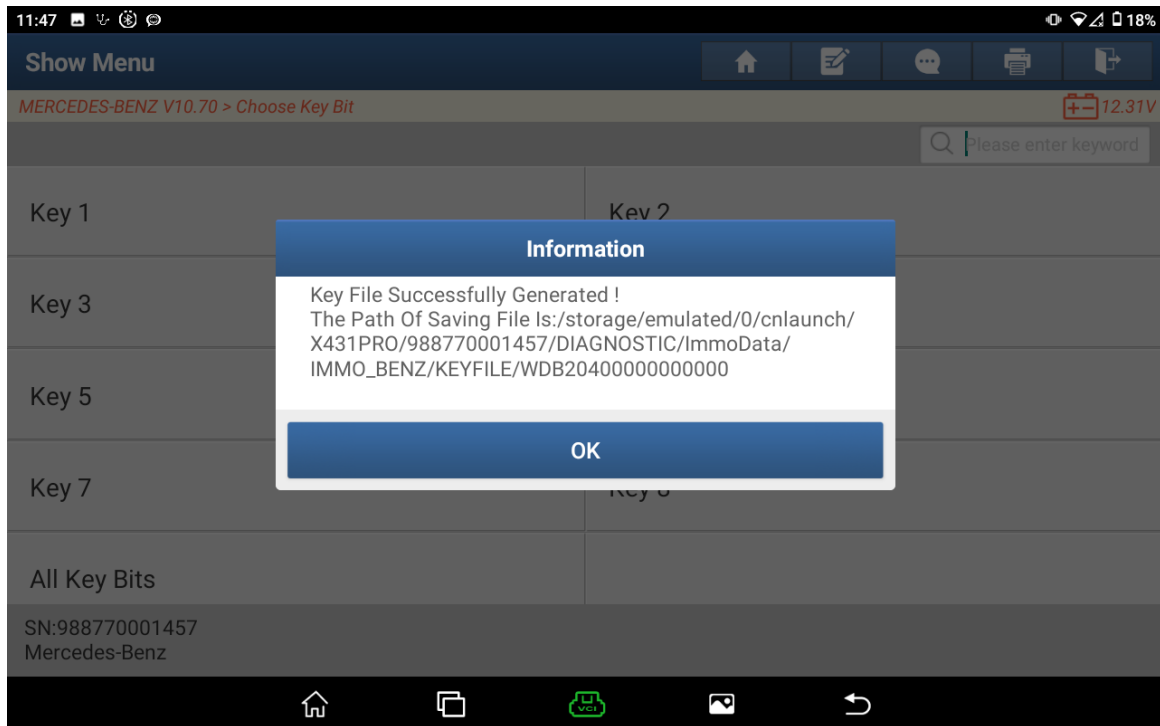


图 16

17. Select according to the requirements, click 'No' here (as shown in the figure below);

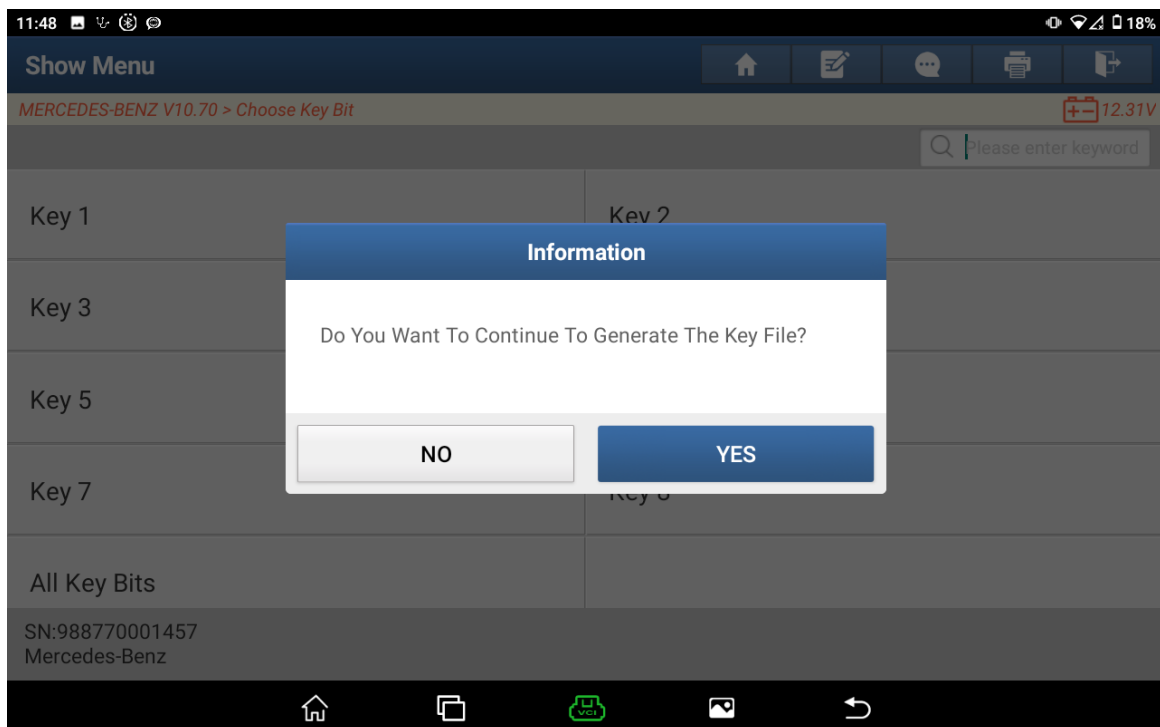


图 17

18. Automatically execute "write key file", select the folder just generated (as shown in the figure below);

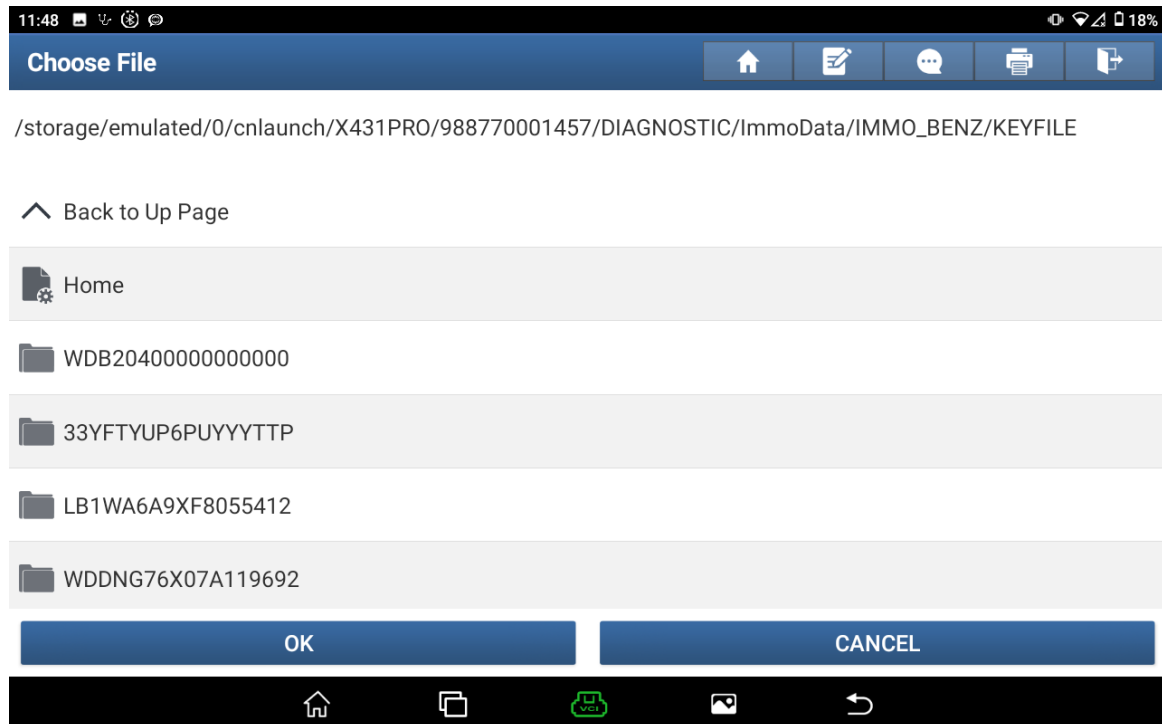


图 18

19. Select the BE key file that was just generated and click "OK" (as shown in the figure below);

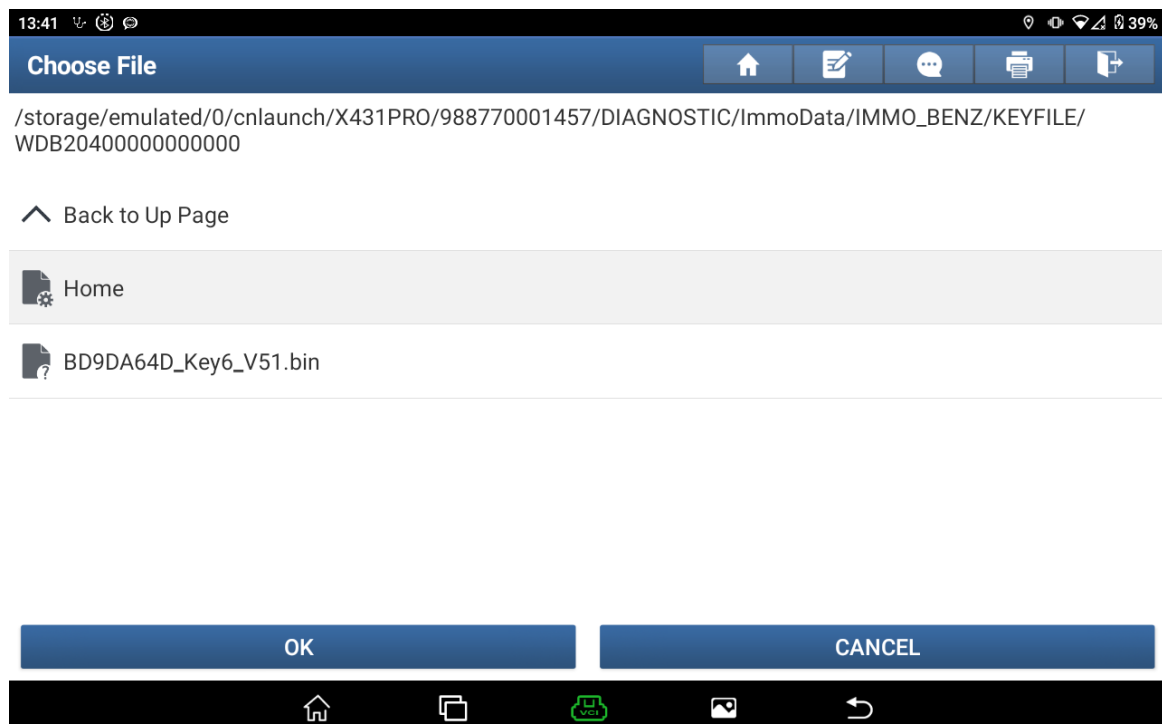


图 19

