

# Honda 2025 CR-V SWS (Seat Weight Sensor) Initialization

**Tested Model:** HONDA CR-V HYBRID 2025

## Function Description:

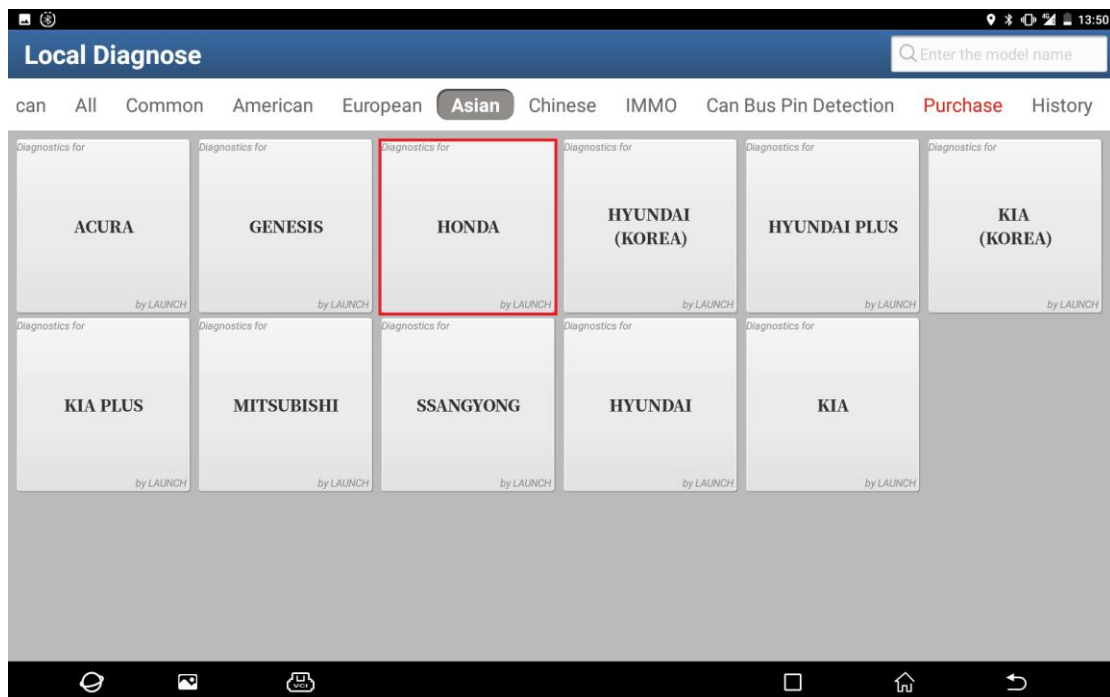
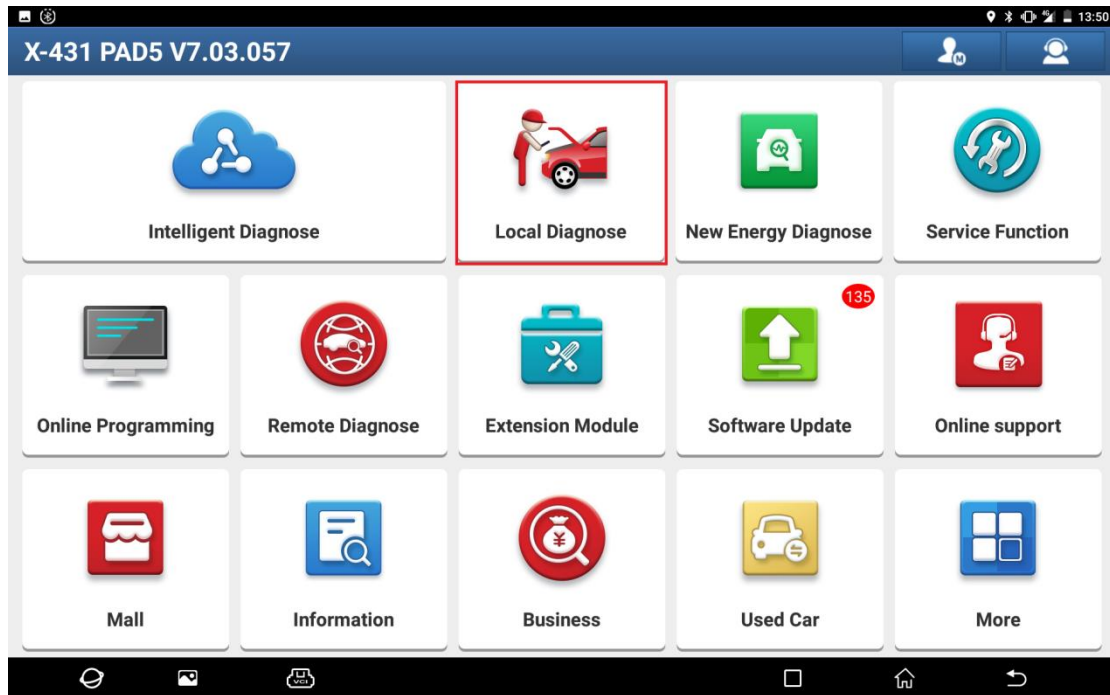
The SWS (Seat Weight Sensor) initialization function must be performed on Honda vehicles after the following components are replaced: seat assembly, seat weight sensor, ODS unit

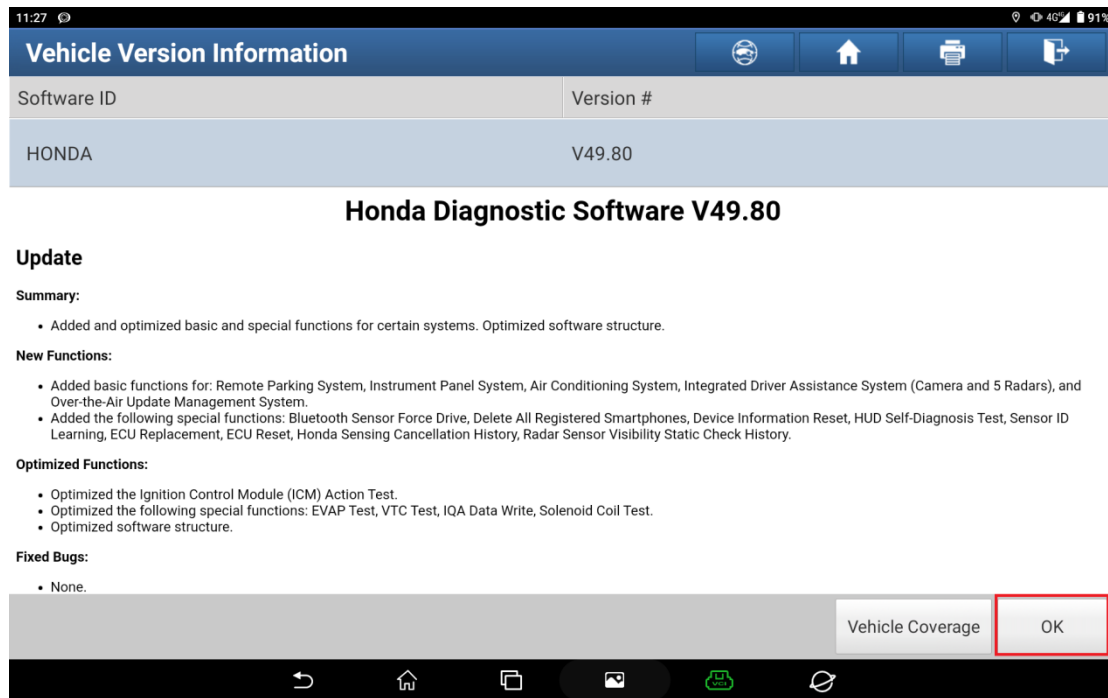
## Execution Conditions:

- Connector connected and ignition switch ON
- The following DTCs are not found: B00CX-16, A4, 87 or 96, U2000-49, B0052-11 or 13
- The vehicle battery voltage is between 10-15V.
- The passenger seatbelt is unfastened.
- The front passenger's seat is dry.
- The vehicle is stopped on a level surface.
- Only the operator is allowed to stay in the vehicle during this operation.
- The operator can only occupy the driver's seat.
- There is nothing placed on the front passenger's seat.

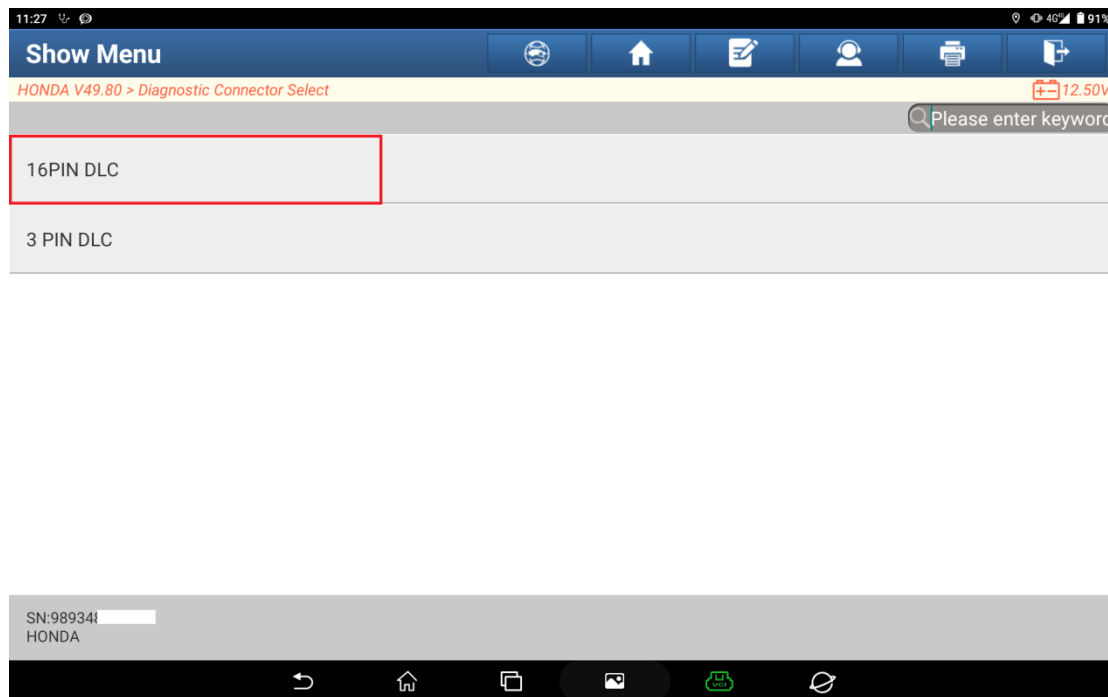
# Procedure:

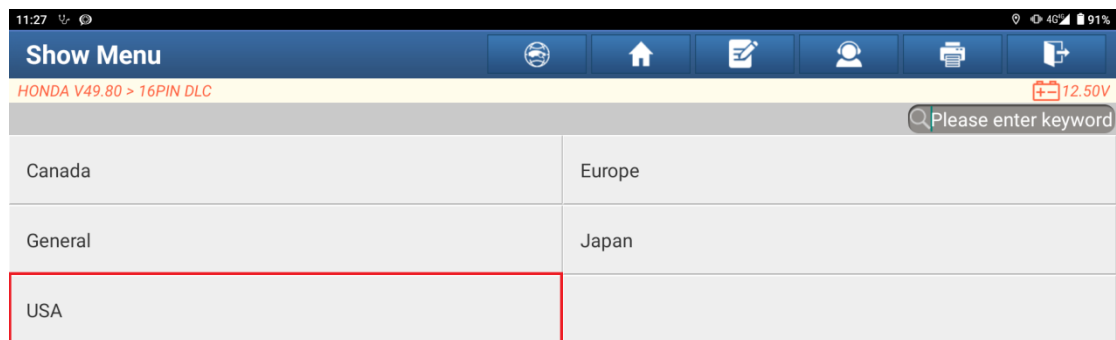
1. On a PAD 5, choose [Local Diagnose], and then choose [HONDA] for testing.





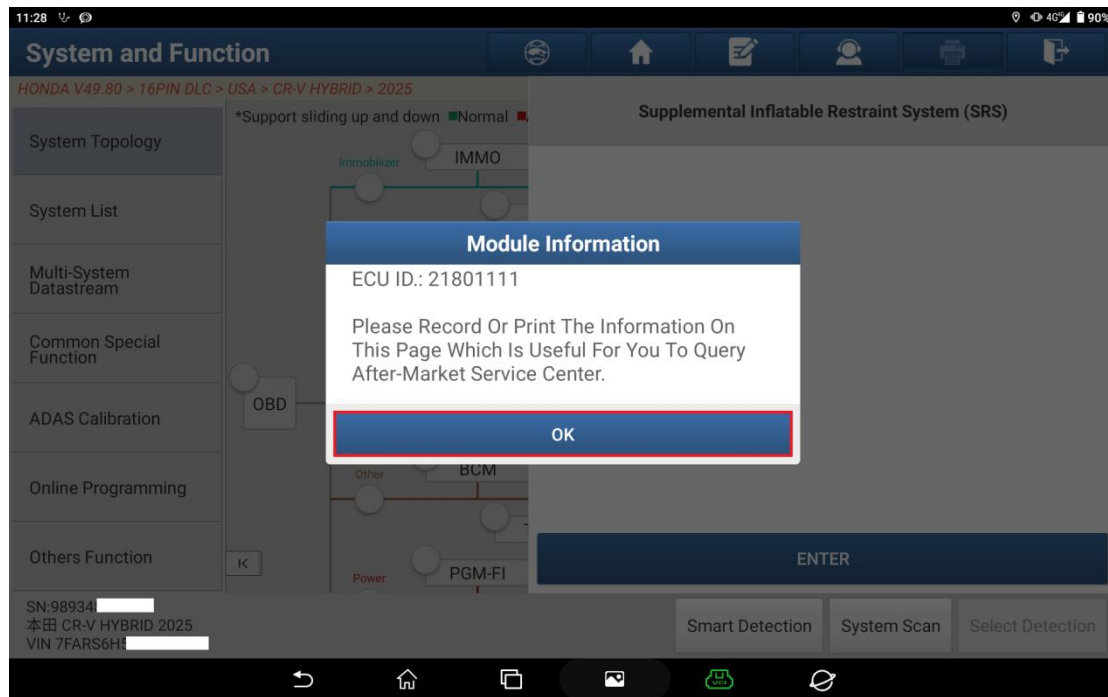
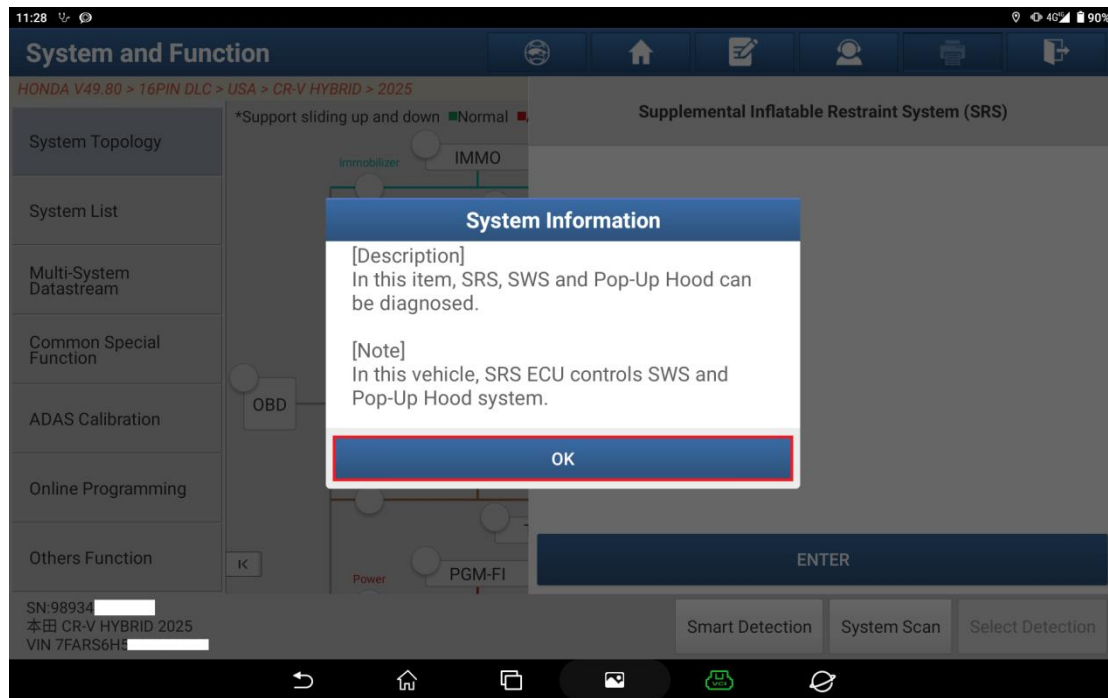
2. Click [16PIN DLC], and then choose the region to automatically identify the car model. For this test, choose the [USA] region.



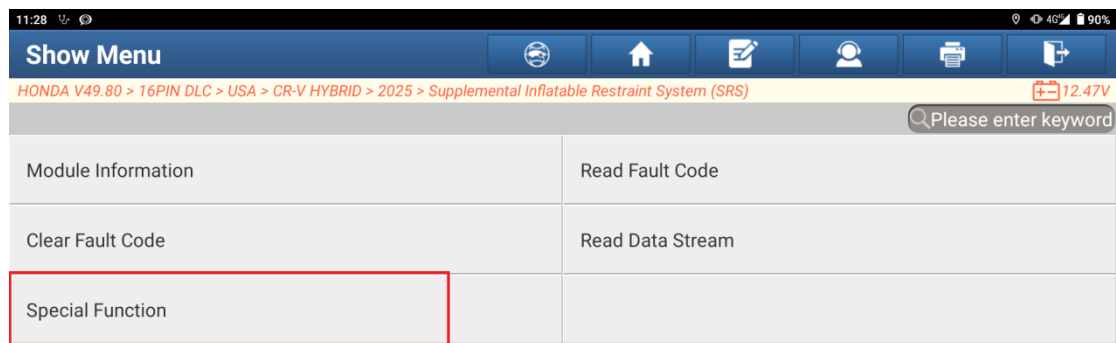


3. Click [SRS (Supplemental Restraint System)] to enter the system. View the system description to confirm the ECU identification code.

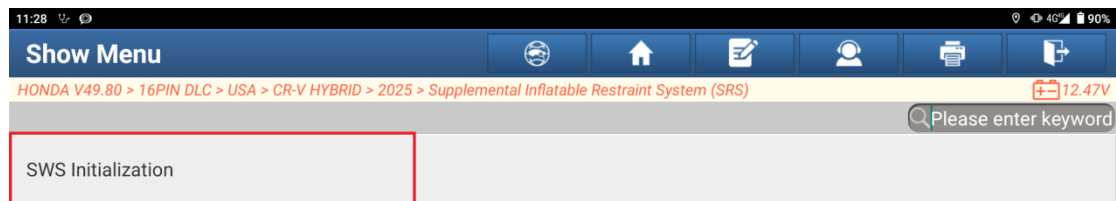




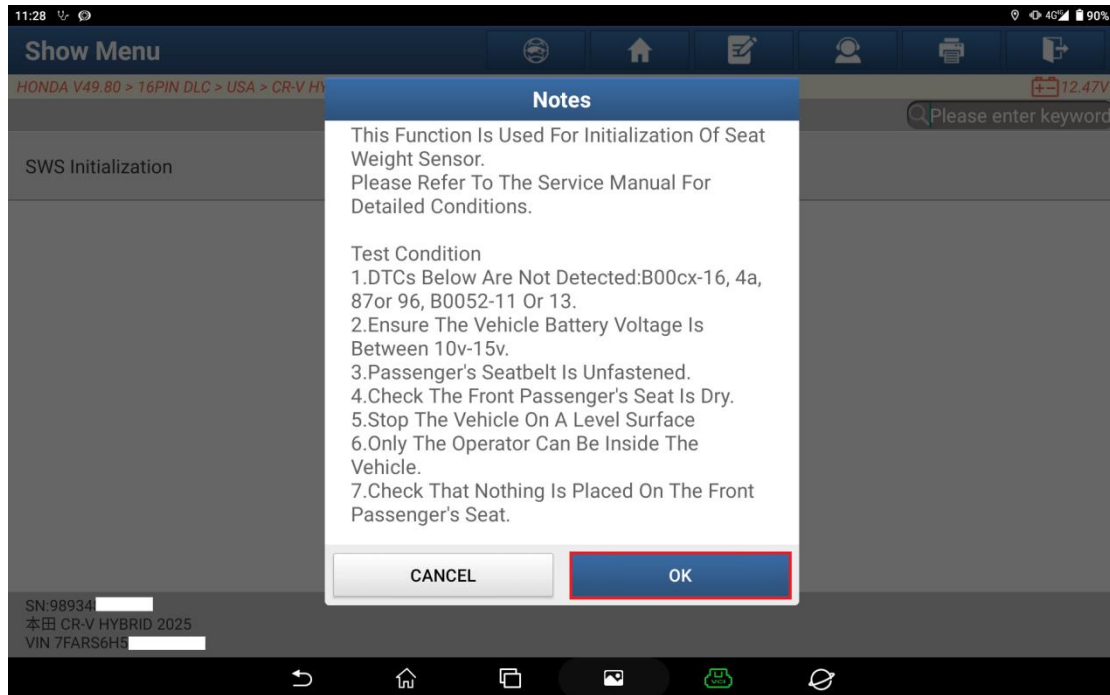
4. Choose [Special Function].



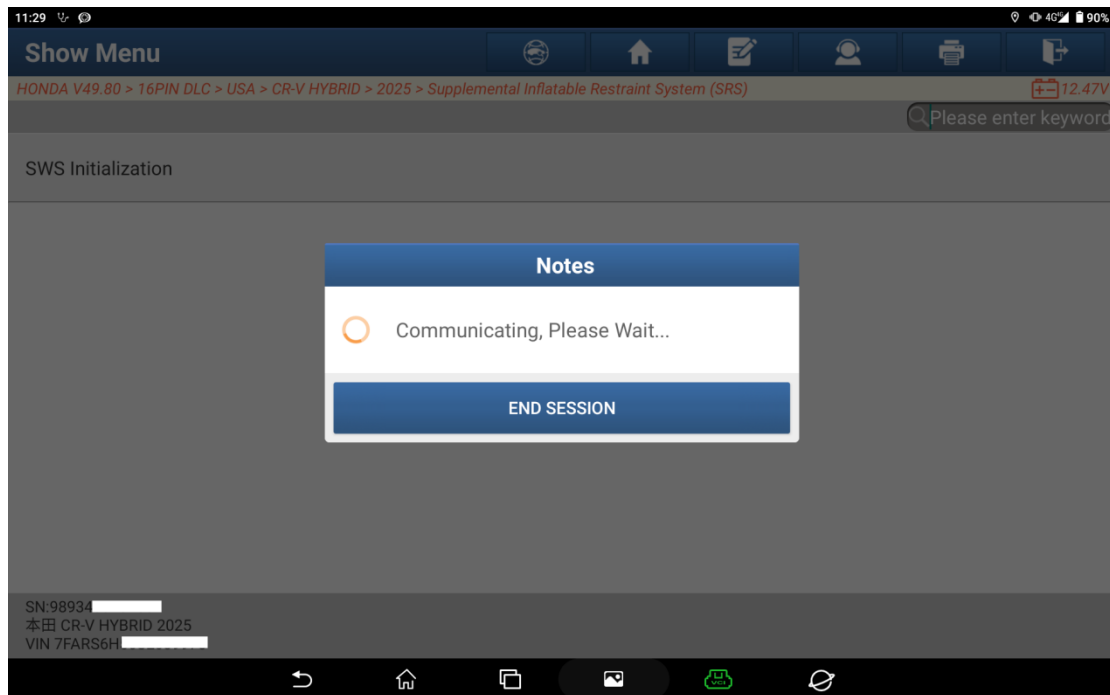
5. Choose [SWS Initialization].



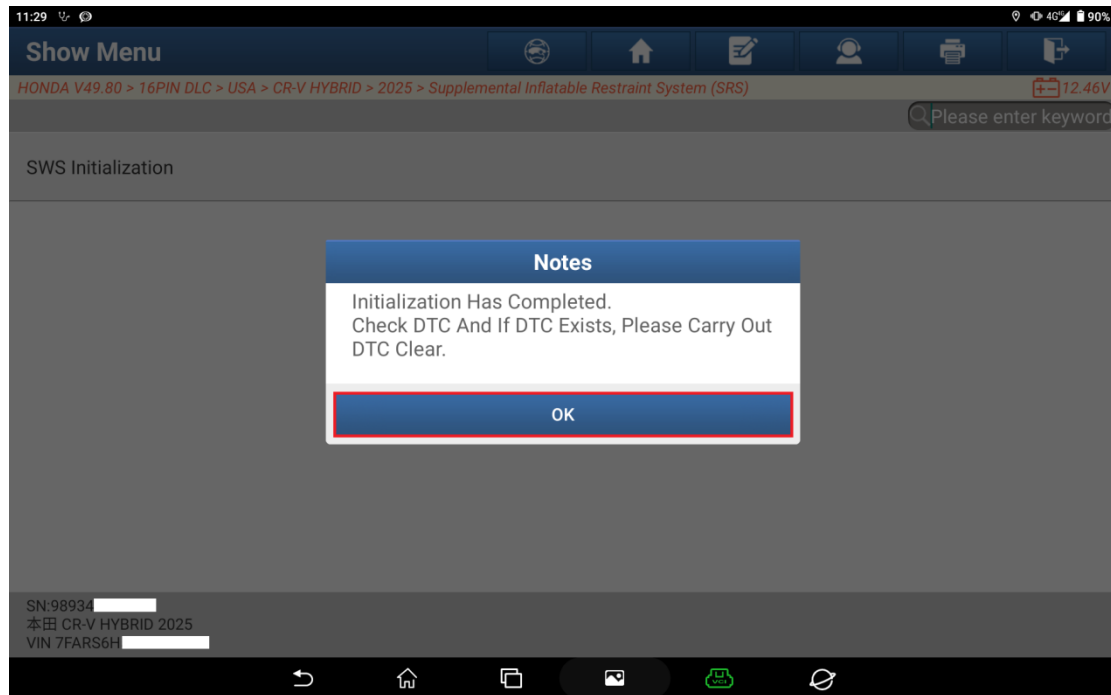
6. Read the function description and test conditions. After ensuring that all conditions are met, click [OK].



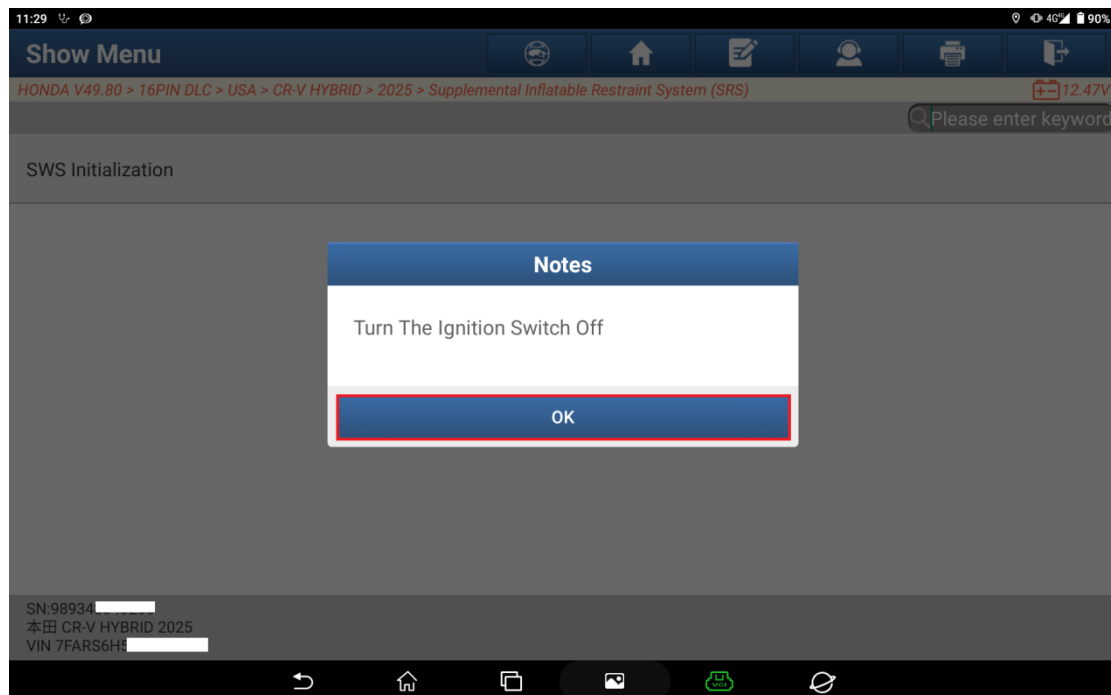
7. Initialization in progress. Please wait.



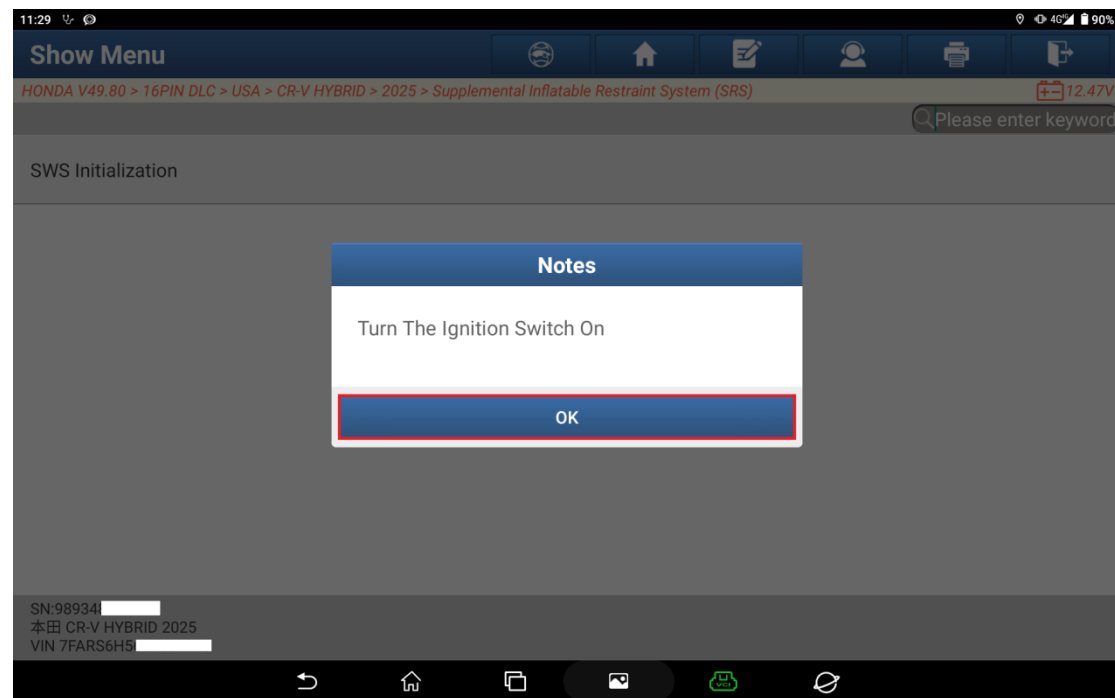
8. Initialization completed. Click [OK].



9. Follow the prompt to turn off the ignition switch.



10. Follow the prompt to turn on the ignition switch.



## Statement:

The content of this document is copyrighted by LAUNCH TECH CO., LTD., and no individual or organization may quote or reprint it without consent.