

2011 Cadillac SRX Washing Throttle Idle Speed Learning Method

Product Model	Date	Number
X-431 Series	20161114	—

Vehicle Coverage:

- Cadillac SRX, Engine model LF1, 2011, VIN; 3GYFN9EY4BS6***** as shown in Figure 1

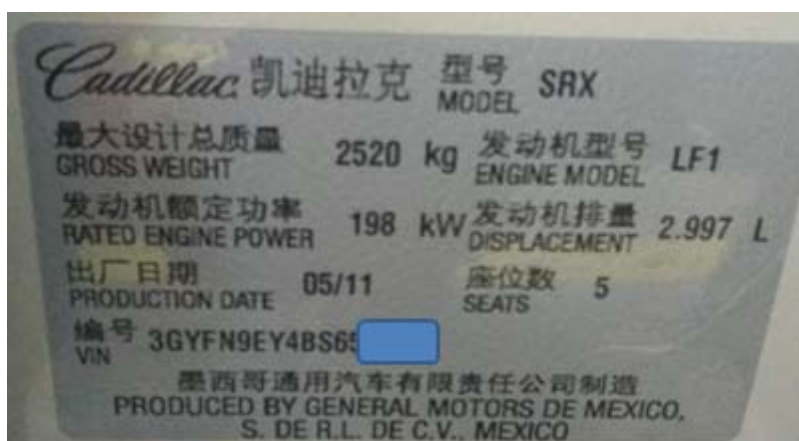


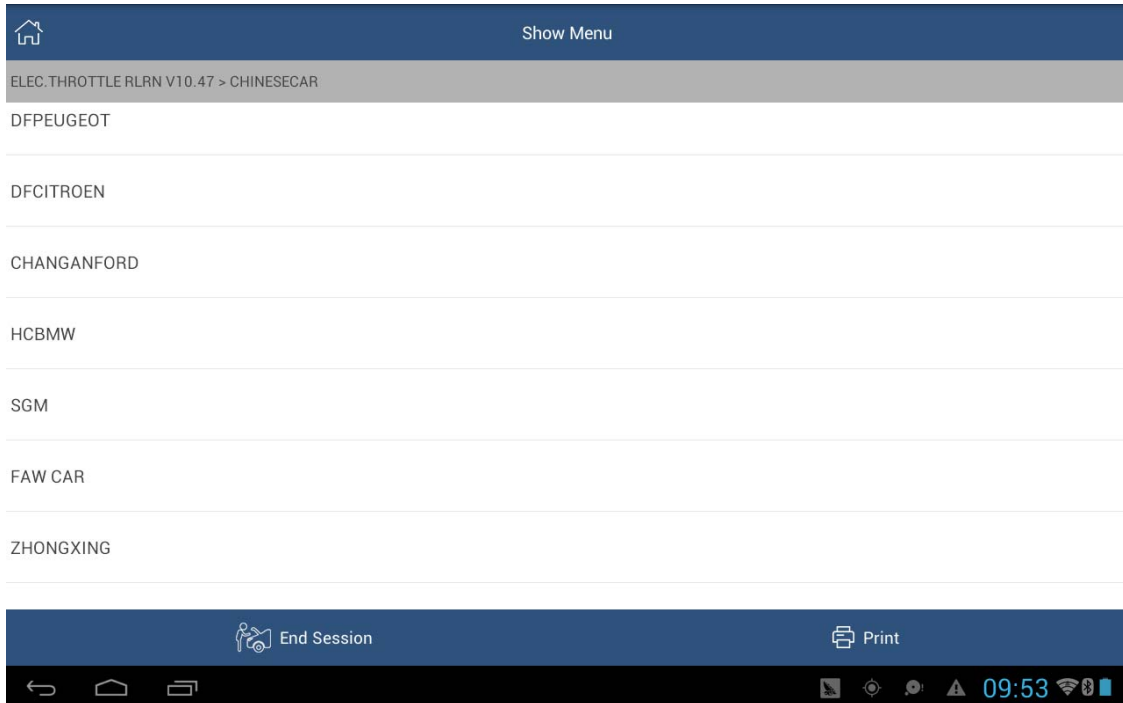
Figure 1

Function Description:

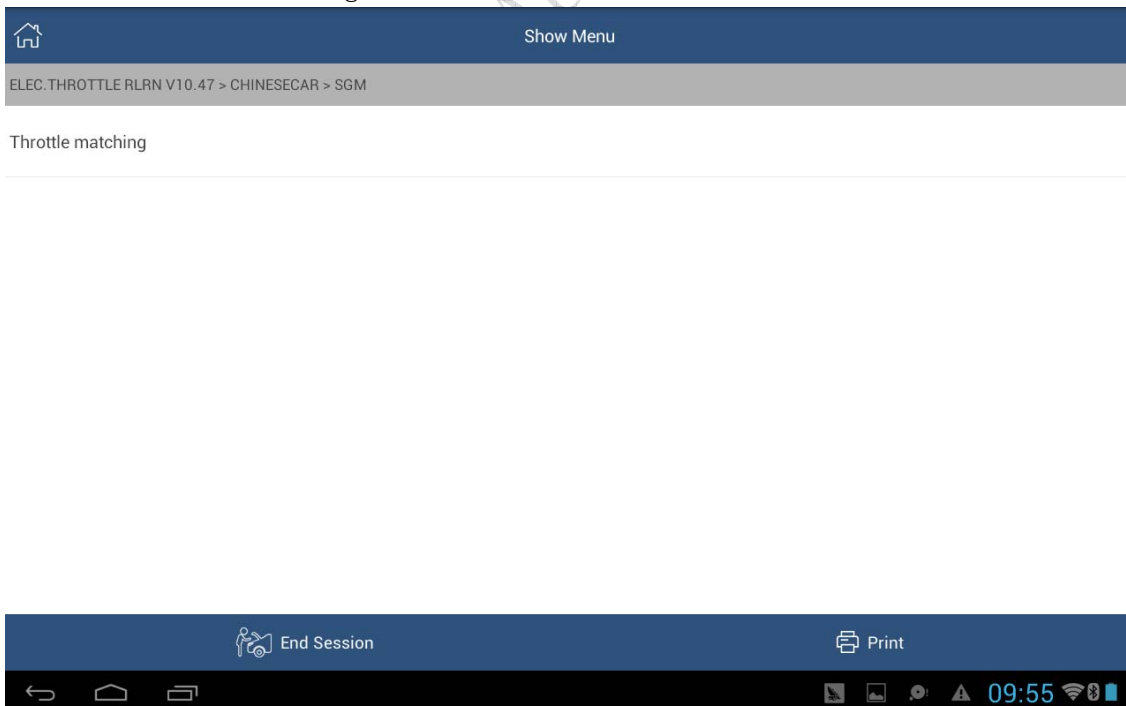
After the washing throttle is powered off: engine acceleration slow, engine stalls (after start); engine acceleration slow (return to idle)

Procedure:

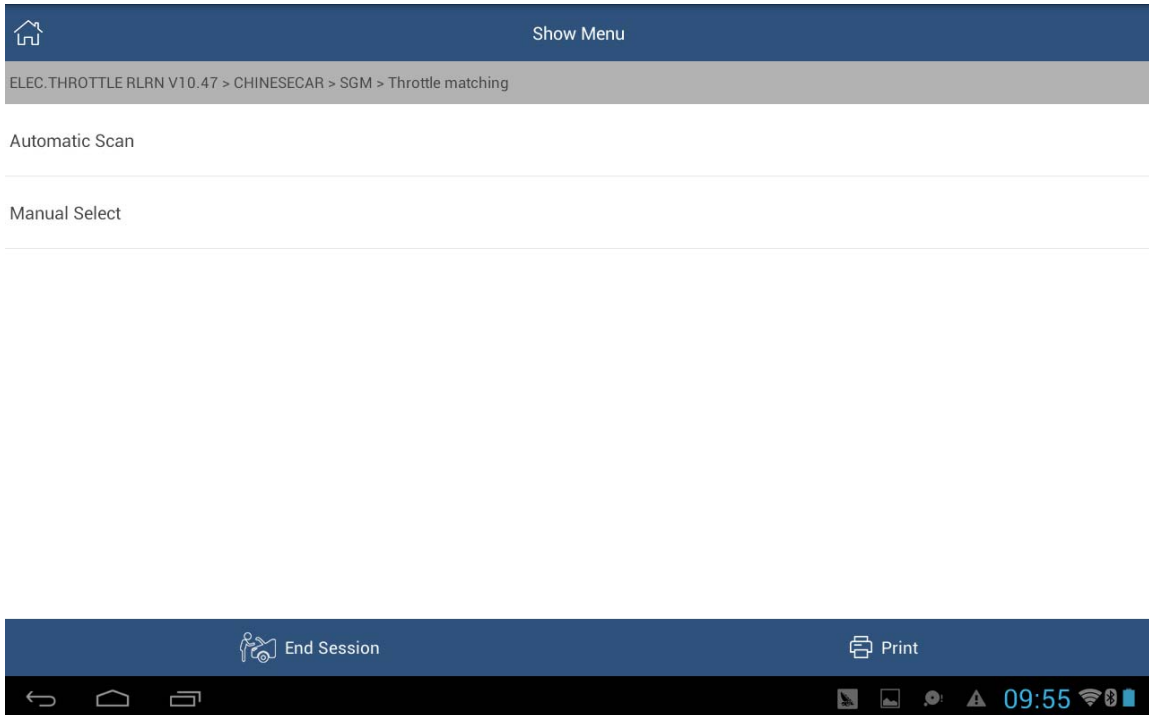
- 1). Choose Special Function.
- 2). Choose throttle matching V10.46 or a later version.
- 3). Choose domestic cars.
- 4). Choose Shanghai GM.



- 5). Choose Throttle Matching.

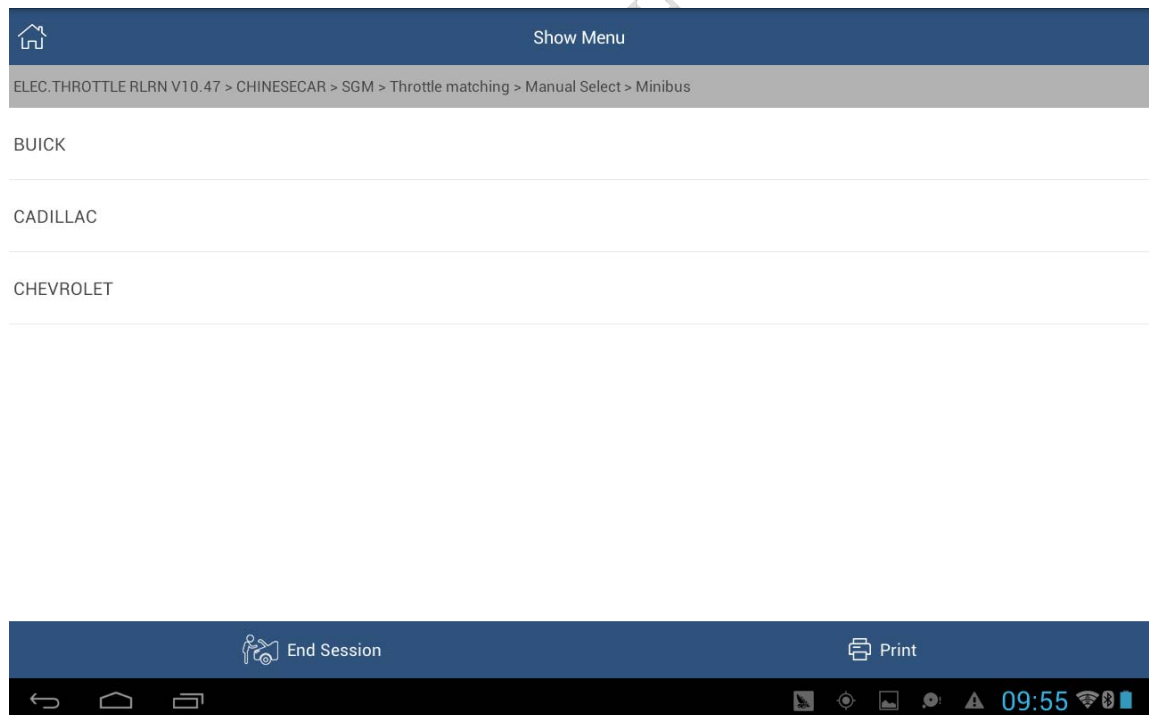


6).Choose Manual Selection.



7).Choose Minibus.

8).Choose CADILLAC.



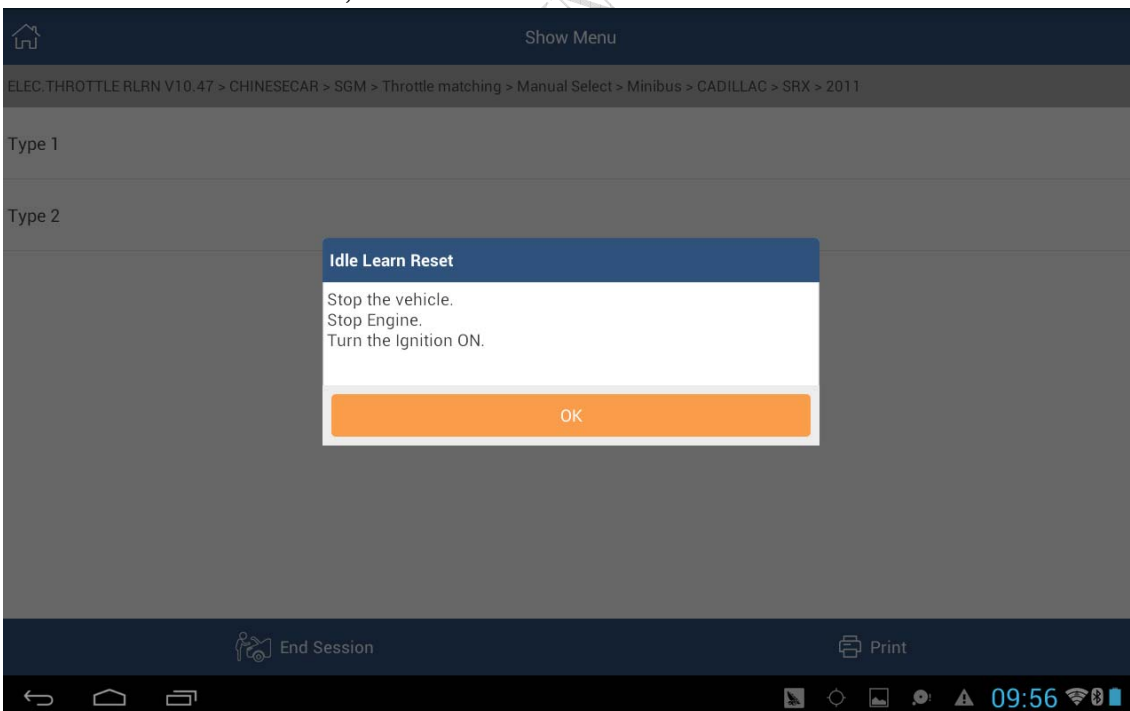
9). Choose SRX.



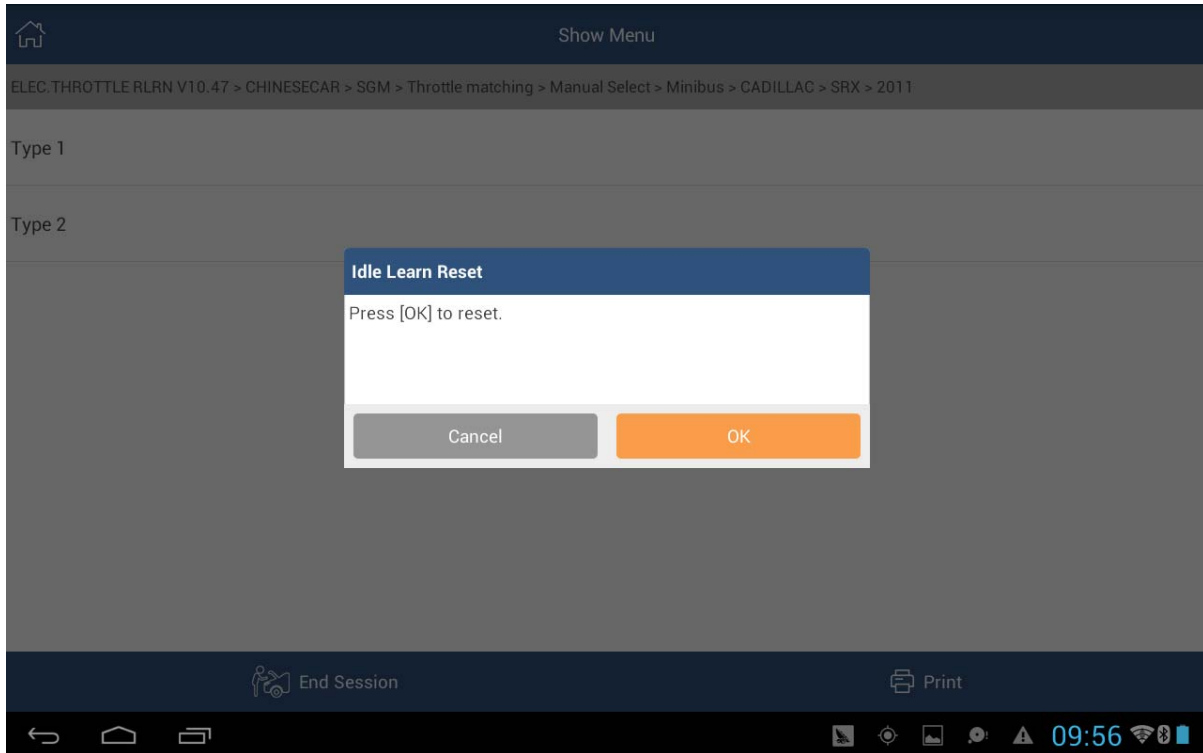
10). Choose 2011.

11). Choose Type 1.

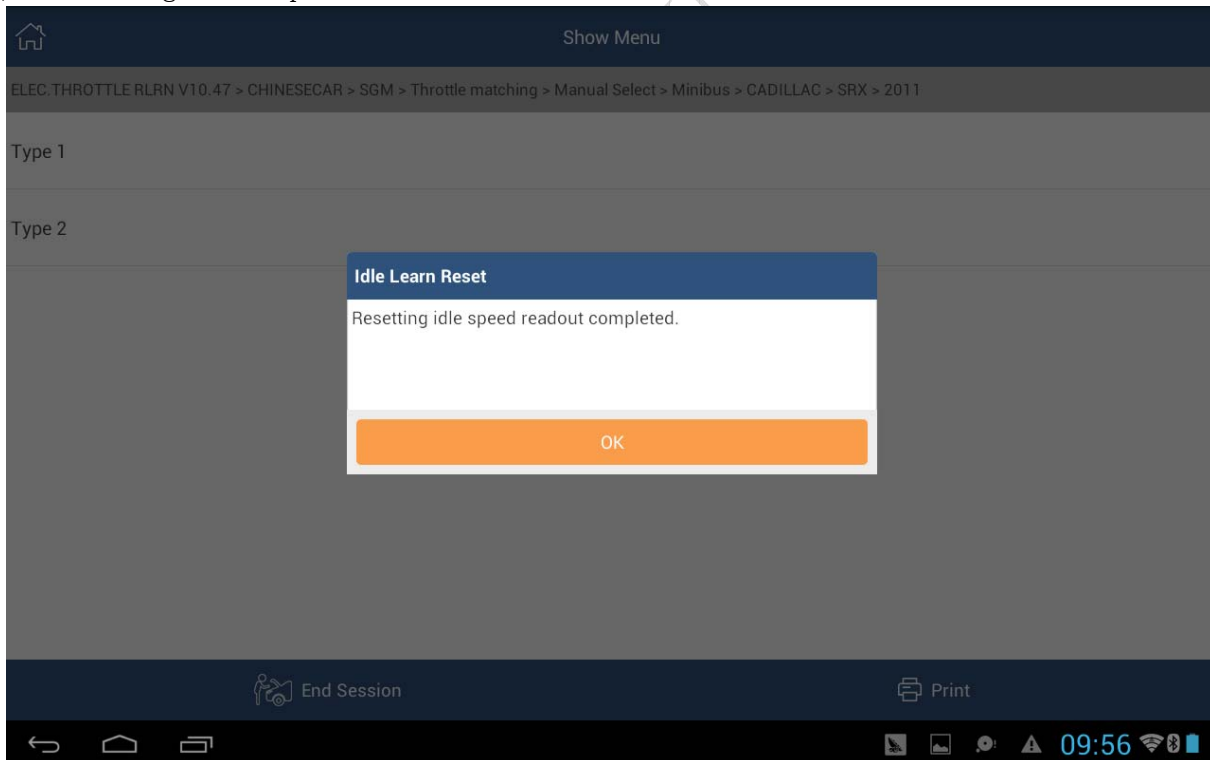
12). The system displays the idle learning resetting conditions. After checking that the conditions are met, click OK.



13). Click OK to start resetting the throttle.



14). Resetting is complete. Click OK.



15). Turn off ignition. The idle speed and acceleration are normal. The throttle matching service process is complete.

Statement:

Shenzhen Launch Tech Co., Ltd. reserves all rights for the content in this document. Any individual or organization reproducing or using this document is not allowed without prior permission.



LAUNCH